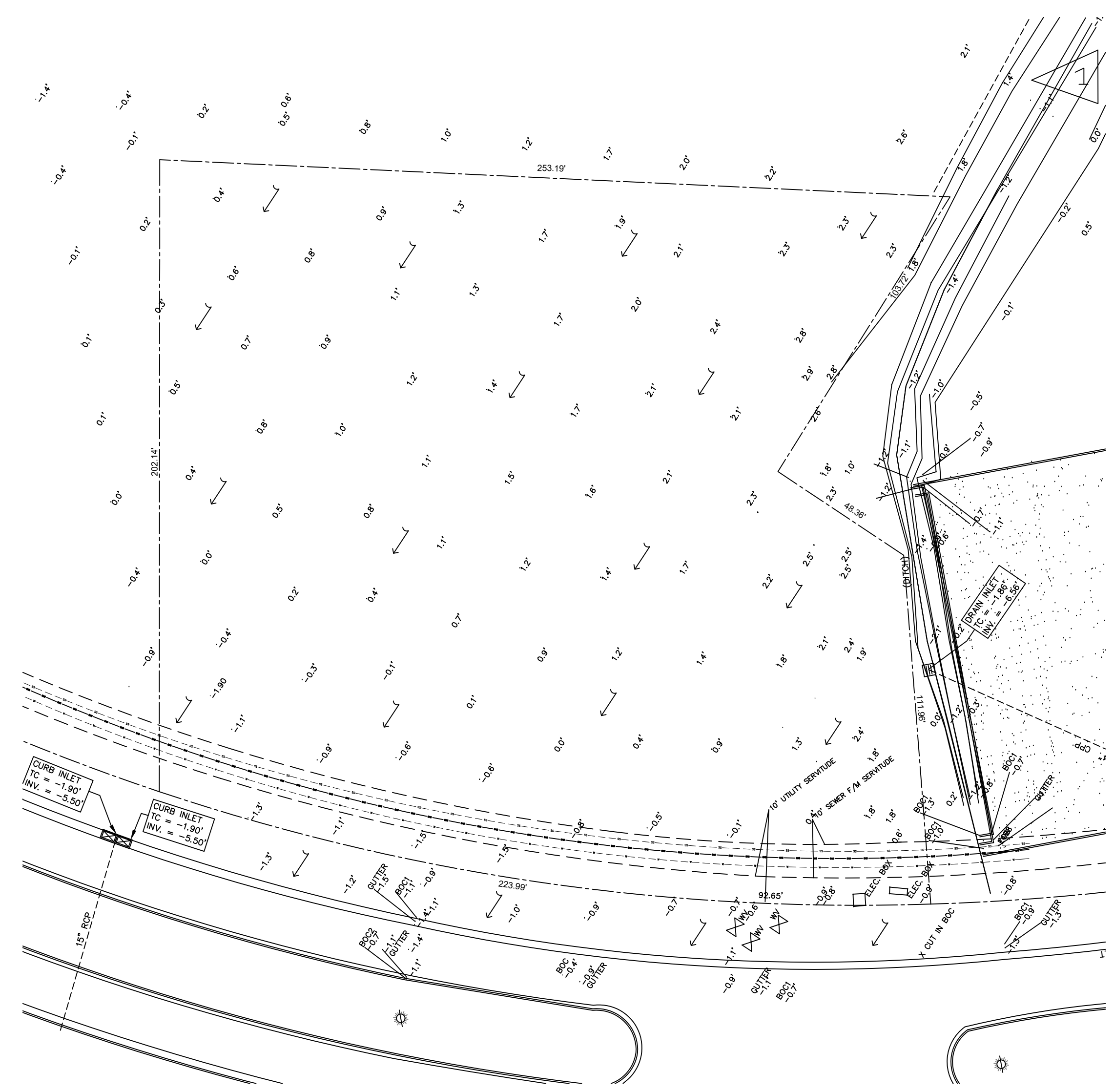


P.L. 2025-01-15, 2:00pm, 1/15/25 - The State of Louisiana, Professional Engineer, License No. 30187, Brian A. Mistich, PE, 554 Old Spanish Trail, Slidell, LA 70458, PH: 985.649.3832

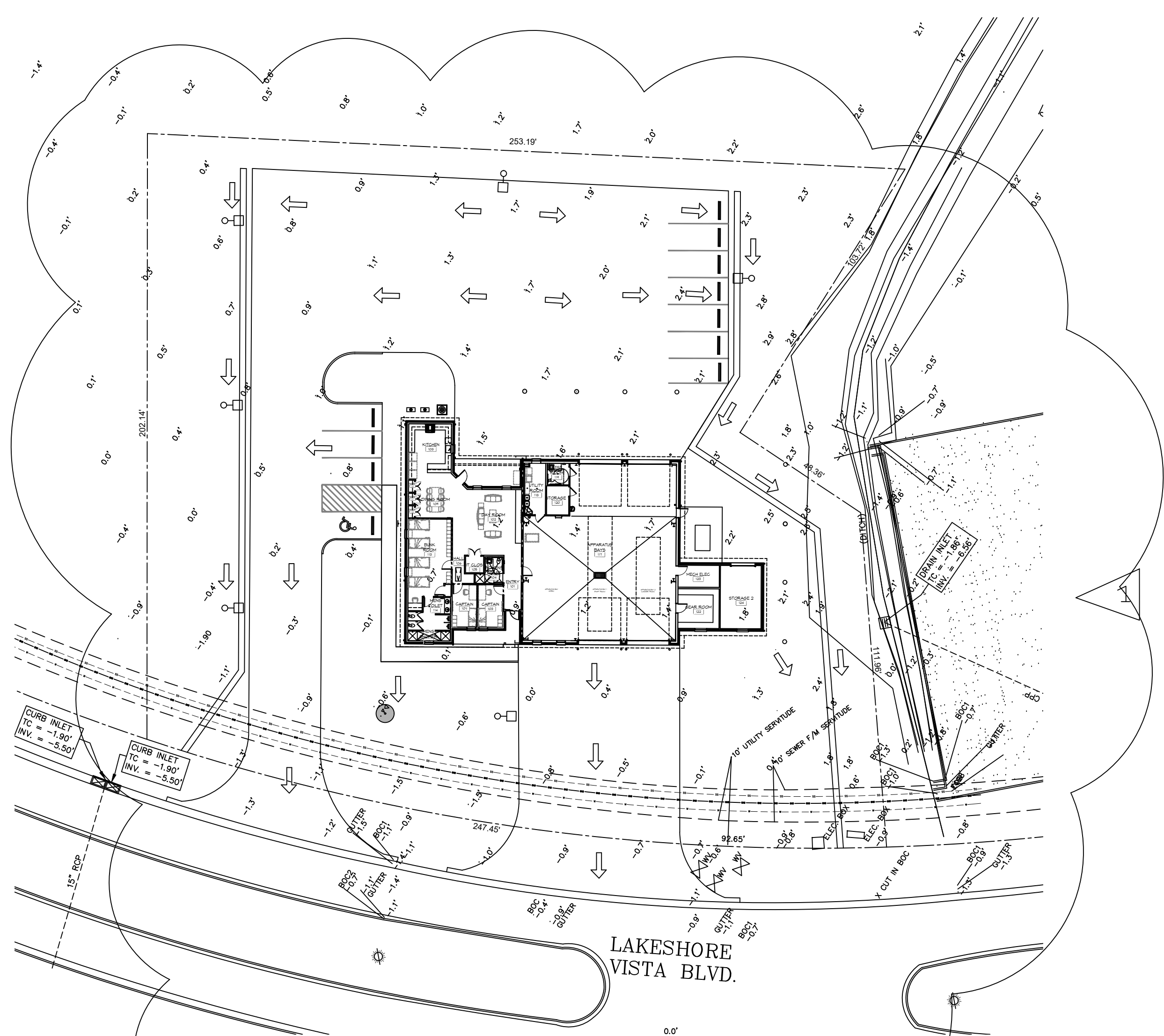


1 PRE DEVELOPMENT
SCALE: 1" = 30'-0"

PRE HARD & GREEN SPACE

EXISTING AREA - 1.187 ACRES = 51,705.72 SQ. FT.

GREEN AREA = 51,705.72 SQ. FT.



2 POST DEVELOPMENT
SCALE: 1" = 30'-0"

POST HARD & GREEN SPACE

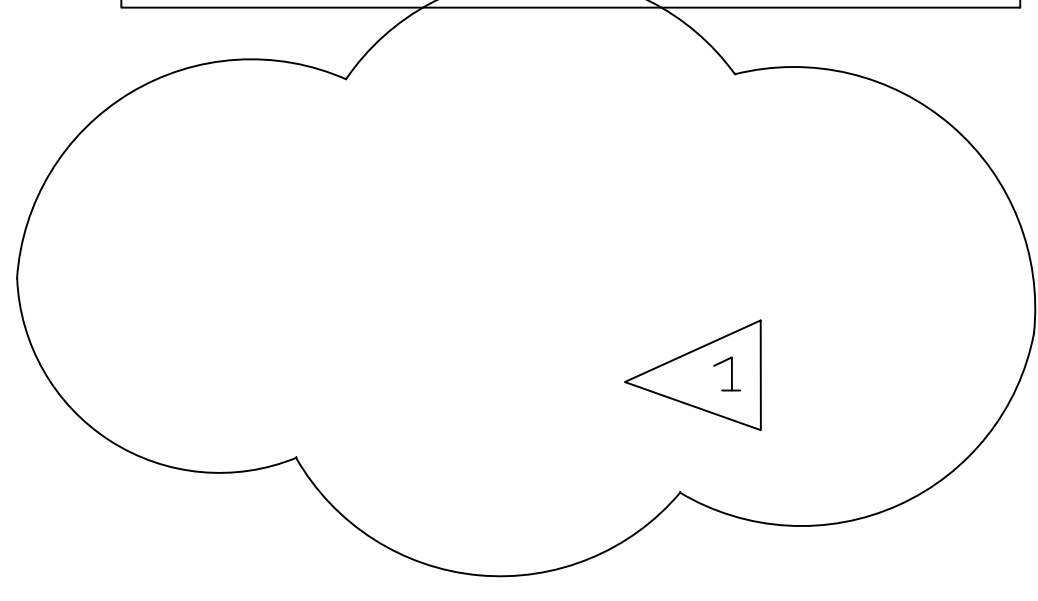
EXISTING AREA - 1.187 ACRES = 51,705.72 SQ. FT.

BUILDING AREA = 6,526 SQ. FT.

CONCRETE PAVING AREA = 22,787 SQ. FT.

GREEN AREA = 22,942.72 SQ. FT.

NO ADVERSE IMPACT TO ADJACENT PROPERTIES



PRE & POST WATER FLOW

↓ PRE DEVELOPMENT DRAINAGE FLOW

↑ POST DEVELOPMENT DRAINAGE FLOW

DAMMON ENGINEERING, INC.
LOUISIANA & MISSISSIPPI

Chief Engineer: Brian Mistich, PE
554 Old Spanish Trail
Slidell, LA 70458
www.dammonengineering.com
info@dammonengineering.com
PH: 985.649.3832

#	DESCRIPTION	DATE
1	REMOVED COEFFICIENT COMMENT RELOCATED SPALES	07-22-26



NEW FIRE STATION #10
ST. TAMMANY FIRE PROTECTION
DISTRICT NO. 1

2745 LAKESHORE VISTA BLVD
SLIDELL, LA 70461

JOB No: 1-16-2026
DATE: 25/1/2026
DRAWN BY: CKD
CHECKED BY: BAW

SHEET TITLE:
PRE AND POST DEVELOPMENT

DRAWING NUMBER:
C106

SHEET No: 10 of 37