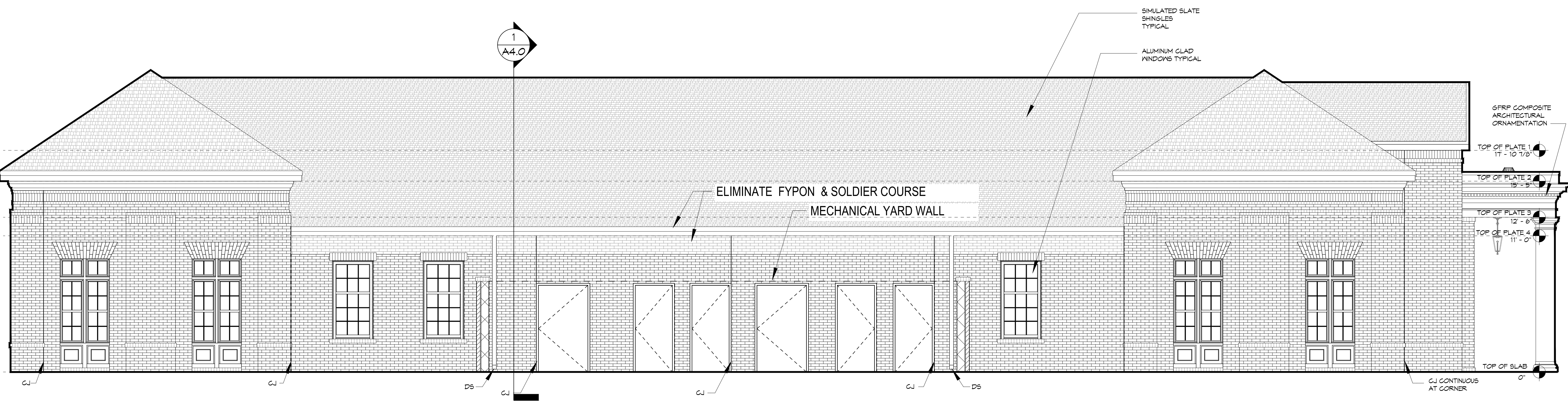
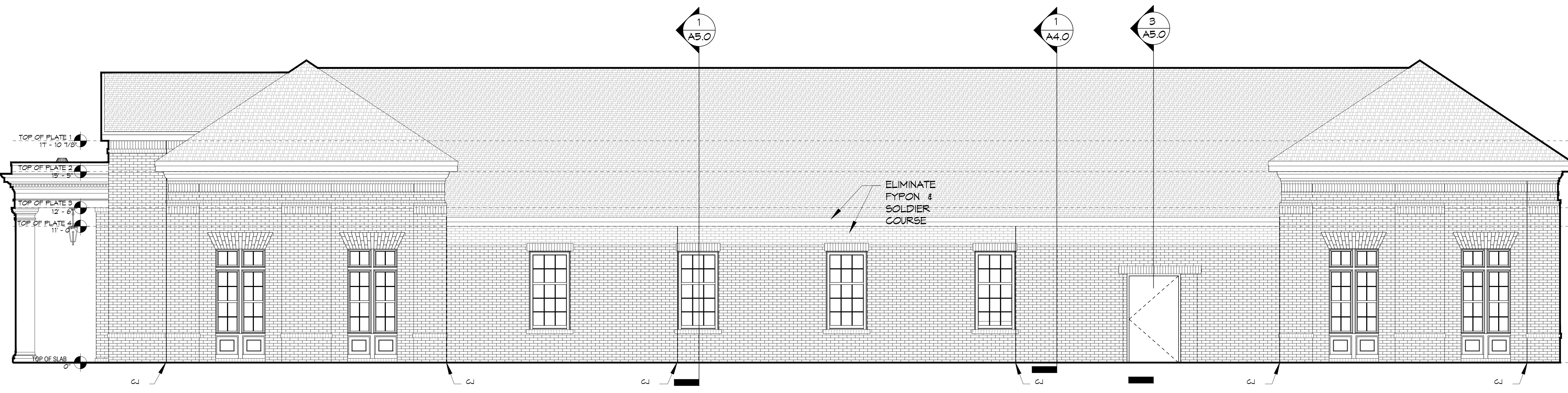


P.L. DAMMON, INC. - MEMPHIS - MISSISSIPPI - ARCHITECTS - OFFICE: 554 Old Spanish Trail, Suite 100, Metairie, LA 70002, USA
 TEL: 504.885.6499 FAX: 504.885.6498 www.dammonengineering.com info@dammonengineering.com



24 LEFT ELEVATION
SCALE: 1/4" = 1'-0"



24 RIGHT ELEVATION
SCALE: 1/4" = 1'-0"

DAMMON
ENGINEERING, INC.
 LOUISIANA & MISSISSIPPI
 Chief Engineer: Brian March, PE
 554 Old Spanish Trail
 Slidell, LA 70458
 www.dammonengineering.com
 info@dammonengineering.com
 PH: 985.649.8832

REVISIONS	DATE
# DESCRIPTION	

SEAL:

NEW MEDICAL OFFICE
POSITIVE STEPS FERTILITY
 500 OAK HARBOR BLVD
 SLIDELL, LA 70458
 JOB No: 2471 DATE: 04-09-2025
 DRAWN BY: CKD CHECKED BY: JMS

SHEET TITLE:
 LEFT AND RIGHT
 ELEVATIONS

DRAWING NUMBER:
A105
 SHEET No: 12 of 18