

N42°23'04"E 285.53'

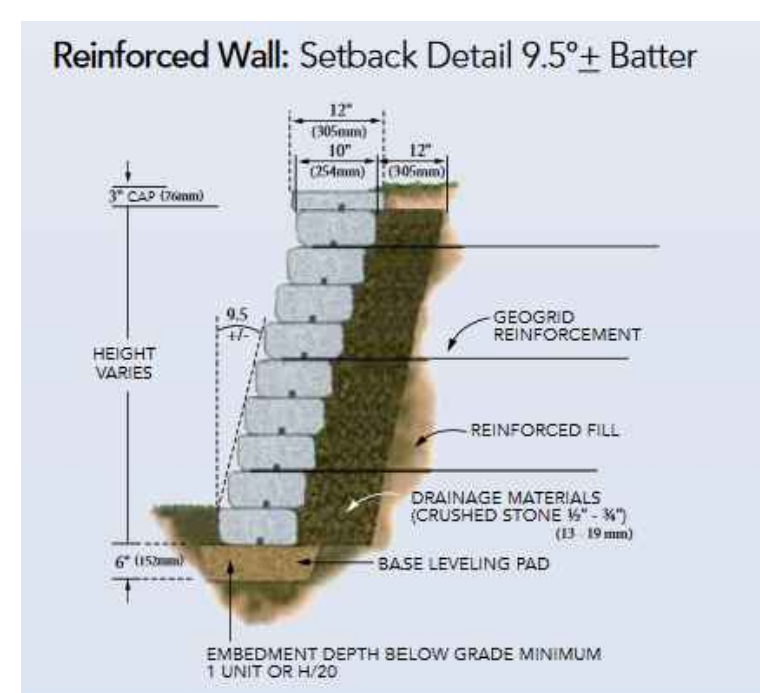
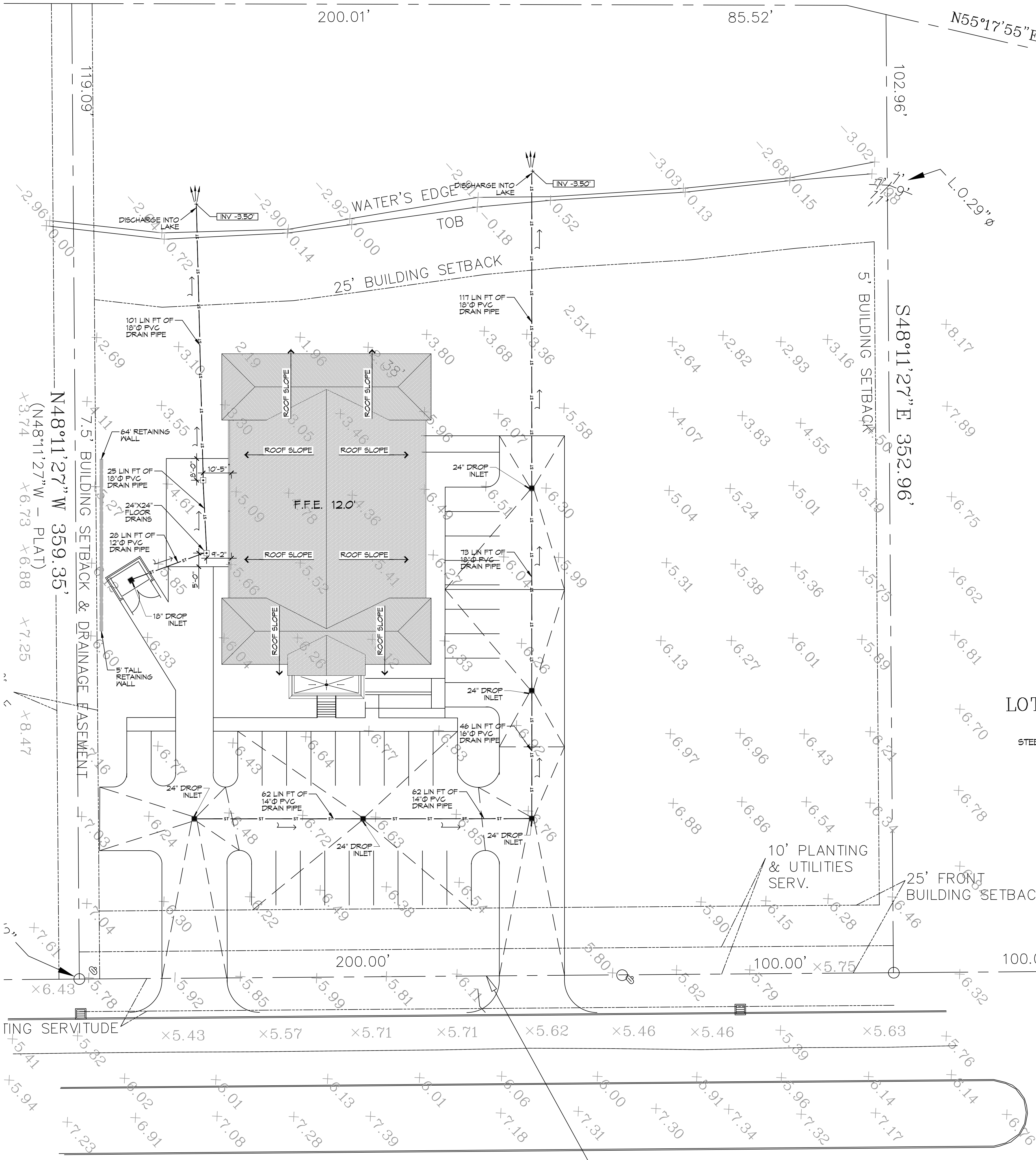
200.01'

85.52'

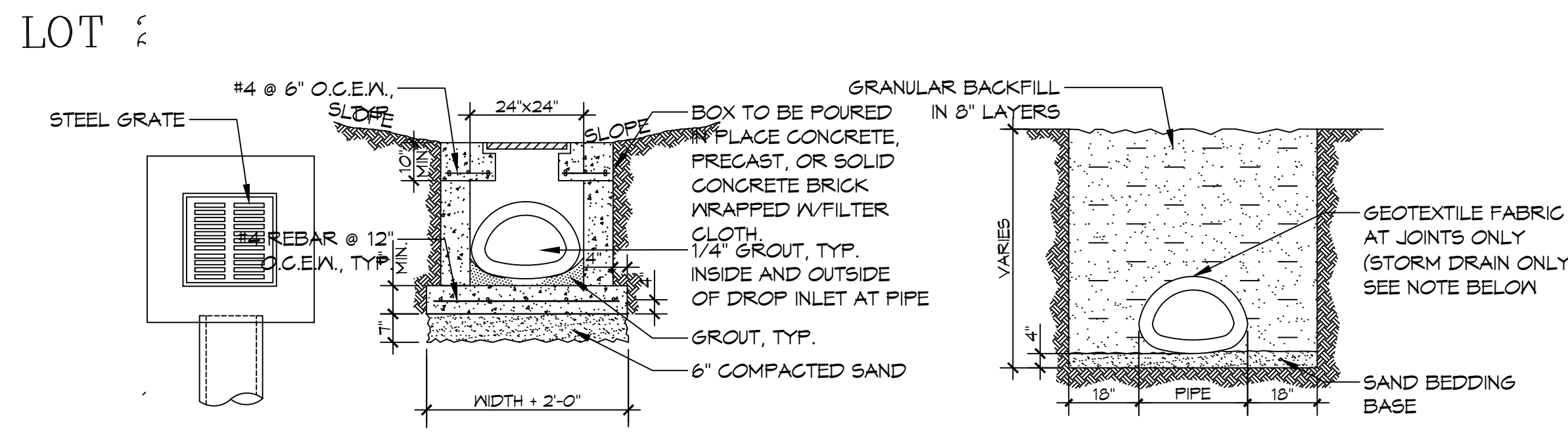
N55°17'55"E 100.00'

- ### GENERAL PAVING NOTES
1. ALL NEW CONCRETE SHALL HAVE A MINIMUM COMPRESSIVE STRENGTH OF 3,000 PSI AT 28 DAYS AND A MINIMUM THICKNESS OF 6". CONCRETE MIX SHALL BE IN ACCORDANCE WITH THE LATEST REVISION OF ASTM C-150 TYPE 1.
 2. ALL REINFORCING STEEL SHALL MEET ASTM-A615 (GRADE 60).
 3. ALL REINFORCING STEEL SHALL BE SECURELY SUPPORTED TO PREVENT BOTH VERTICAL AND HORIZONTAL MOVEMENT DURING CONCRETE PLACEMENT. ALL CONTROL AND EXPANSION JOINTS SHALL BE LOCATED WITH THE MANUFACTURER'S RECOMMENDATIONS.
 4. ALL SUB GRADE FILL SHALL BE SELECT GRANULAR MATERIAL COMPACTED TO 95% STANDARD PROCTOR DENSITY IN A MAXIMUM OF 6" LIFTS.
 5. ANY WORK WITHIN THE ROADWAY OR ADJACENT TO THE ROADWAY CAUSING AN INTERFERENCE TO VEHICULAR TRAFFIC MUST CONFORM TO THE REQUIREMENTS SET FORTH BY THE UNIFORM MANUAL OF TRAFFIC CONTROL DEVICES OF THE STATE OF LOUISIANA. THE CONTRACTOR MUST FURNISH ALL NECESSARY TRAFFIC SIGNS AND/OR BARRICADES AND MAINTAIN THEM DURING CONSTRUCTION ACTIVITY.

DAMMON ENGINEERING, INC.
 LOUISIANA & MISSISSIPPI
 Chief Engineer: Brian Misch, PE
 954 Old Spanish Trail
 Slidell, LA 70458
 www.dammonengineering.com
 info@dammonengineering.com
 PH: 985.649.5832



RETAINING WALL
 SCALE: N.T.S.



- NOTES:
1. ALL GEOTEXTILE FABRIC TO BE 3'-0" WIDE AND TO OVERLAP NO LESS THAN 1/2 OF PIPE DIAMETER AT ALL JOINTS.
 2. ADDITIONAL BEDDING MATERIAL MAY BE REQUIRED AS DIRECTED BY THE ENGINEER.
 3. TIMBER PLANKING UNDER CULVERTS MAY BE REQUIRED BY THE ENGINEER.

TYPICAL DROP INLET
 SCALE: N.T.S.

REVISIONS	DATE

SEAL:

NEW MEDICAL OFFICE
POSITIVE STEPS FERTILITY
 500 OAK HARBOR BLVD
 SLIDELL, LA 70458
 JOB No: 2477 DATE: 04-30-2025
 DRAWN BY: CKD CHECKED BY: CKD

SHEET TITLE:
PAVING & DRAINAGE PLAN

DRAWING NUMBER:
C104

SHEET No: 6 of 16