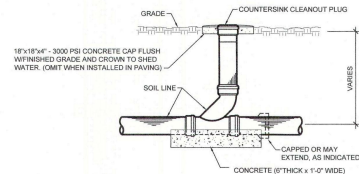
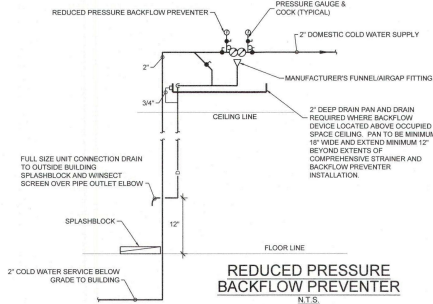


**WALL CLEANOUT DETAIL**  
N.T.S.

NOTE:  
EXAMPLE SHOWN IS CAST IRON; PVC/DW EXAMPLE SIMILAR

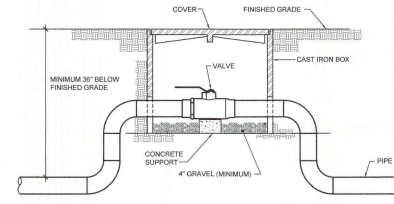


**ONE-WAY FLUSH GRADE CLEANOUT DETAIL**  
N.T.S.

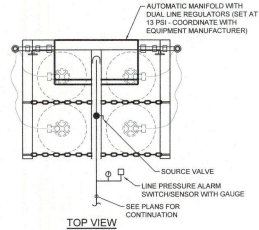


**REDUCED PRESSURE BACKFLOW PREVENTER**  
N.T.S.

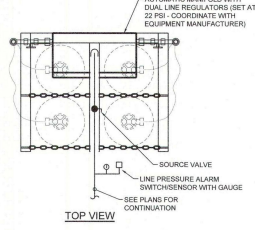
NOTE:  
INSULATED WATER PIPING AND DRAIN PIPING CONCEALED IN WALL



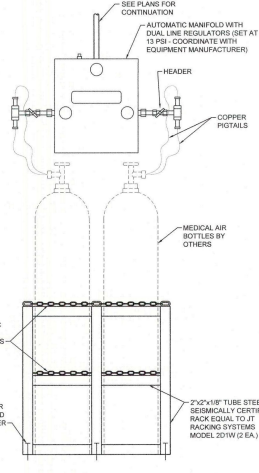
**TYPICAL VALVE BOX DETAIL**  
N.T.S.



TOP VIEW

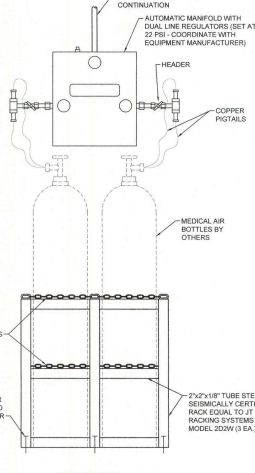


TOP VIEW



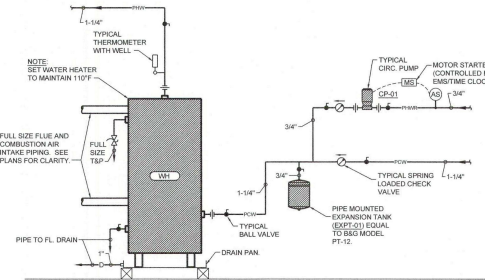
FRONT VIEW

**CARBON DIOXIDE MANIFOLD DETAIL**  
N.T.S.

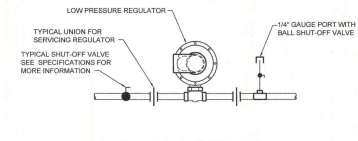


FRONT VIEW

**MIXED GAS MANIFOLD DETAIL (89%NIT, 6%CO2, 5% OXY)**  
N.T.S.

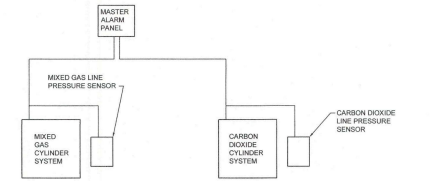


**WATER HEATER (WH-01) DETAIL**  
N.T.S.



**GAS REGULATOR DETAIL**  
N.T.S.

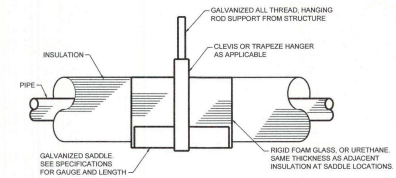
NOTES:  
1. PROVIDE VENT TO OUTDOORS FOR ALL REGULATORS LOCATED INSIDE BUILDING  
2. SEE PLANS FOR PIPE SIZES  
3. SEE REGULATOR SCHEDULE FOR INLET PRESSURE, OUTLET PRESSURE AND MBH (CFM) REQUIREMENTS.



**LABORATORY GAS ALARM WIRING SCHEMATIC**  
N.T.S.

ALARMS REQUIRED:  
1. LOW MIXED GAS LINE PRESSURE  
2. HIGH MIXED GAS LINE PRESSURE  
3. RESERVE IN USE  
4. SPARE Pairs QUANTITY - 2

ALARMS REQUIRED:  
1. LOW CARBON DIOXIDE LINE PRESSURE  
2. HIGH CARBON DIOXIDE LINE PRESSURE  
3. RESERVE IN USE  
4. SPARE Pairs QUANTITY - 2



**HORIZONTAL PIPE INSULATION AND HANGING DETAIL**  
N.T.S.

NOTE: UNINSULATED GAS PIPING SIMILAR

NO.	DATE	REVISIONS



NEA MEDICAL OFFICE  
**DIANA OAK HARBOR REAL ESTATE LLC**  
540 OAK HARBOR BLVD  
SUITE 100  
SLUCELL, LA 70488  
JOB NO: 2513 DATE: 05-16-2025  
DRAWN BY: CAD CHECKED BY: BAW

SHEET TITLE:  
PLUMBING DETAILS