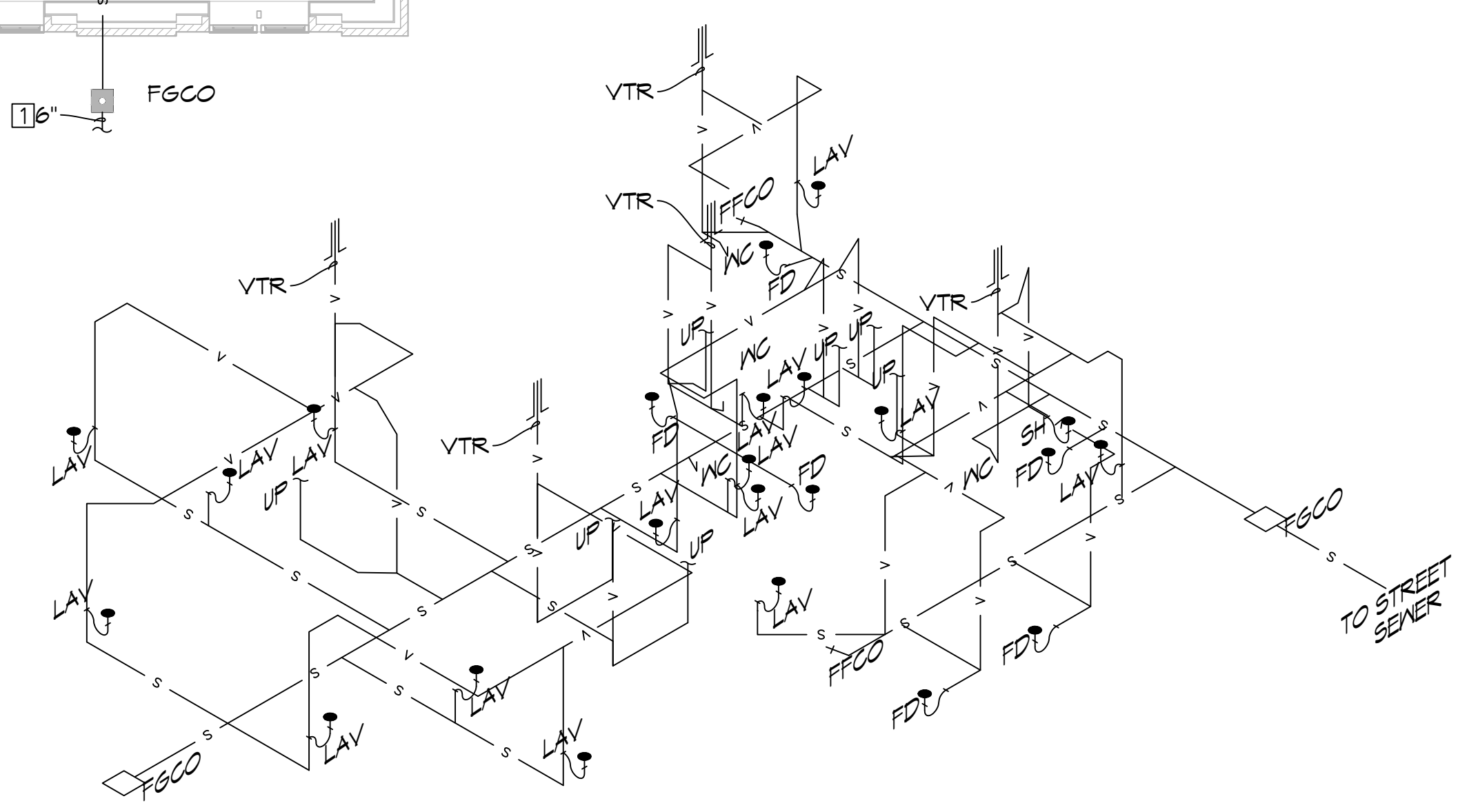


- SPECIFIC DRAIN, WASTE, AND VENT NOTES #**
- (SEE GENERAL PLUMBING NOTES FOR MORE INFORMATION)
1. TYPICAL SERVICE PIPING BELOW GRADE AT APPROXIMATELY THIS LOCATION. SEE CIVIL PLAN FOR CONTINUATION.
 2. 1/2" TYPE 'K' SOFT COPPER TRAP PRIMER AND 3" WASTE BELOW SLAB/FLOOR.
 3. 1-1/2" INSULATED TRAPPED WASTE RECEPTOR ABOVE CEILING EXTENDED UP THROUGH MEZZANINE FLOOR ABOVE TO RECEIVE COOLING COIL CONDENSATE DRAIN INSULATE ALL PIPING INCLUDING VENT/WASTE PIPING IN WALL TO SLAB ON GRADE.
 4. INSULATE CONDENSATE DRAIN AND/OR SANITARY WASTE PIPING, INCLUDING TRAP AND SANITARY WASTE PIPING IN APPLICATIONS WHERE CONDENSATE FROM AIR CONDITIONING UNITS AND/OR DEHUMIDIFIERS DISCHARGE. INSULATION SHALL EXTEND CONTINUOUS TO SLAB ON GRADE PENETRATION. INSULATE PER SPECIFICATIONS FOR CONDENSATE DRAIN PIPING.
 5. EXTEND CONDENSATE DRAIN PIPING TO TRAPPED WASTE RECEPTOR AS INDICATED. HORIZONTAL MAINS TO BE 1-1/4" SIZE WITH MINIMUM 3/4" SIZE CONNECTIONS TO INDIVIDUAL UNITS. CONNECT 1" DRAIN FOR DISHWASHERS TO SINK.
 6. TYPICAL INSULATED RAIN LEADER PIPING ROUTED UP TO ROOF DRAIN.
 7. TYPICAL RAIN LEADER PIPING ROUTED BELOW FINISHED GRADE AT APPROXIMATELY THIS LOCATION. SEE ARCHITECTURAL/CIVIL SITE PLAN FOR INVERTS AND CONTINUATION.

ALL SANITARY SEWER ARE
DIAGRAMMATICALLY
DRAWN FOR CLARITY.

1 PLUMBING DRAIN, WASTE, AND VENT PLAN
SCALE: 3/16" = 1'-0"



2 PLUMBING RISER
SCALE: 3/16" = 1'-0"

DAMMON ENGINEERING, INC.
LOUISIANA & MISSISSIPPI

Chief Engineer: Brian March, PE
554 Old Spanish Trail
Slidell, LA 70458
www.dammonengineering.com
info@dammonengineering.com
PH: 985.649.8832

#	DESCRIPTION	DATE

SEAL:

PROGRESS SET

NEW MEDICAL OFFICE
DIANA OAK HARBOR REAL ESTATE
LLC

340 OAK HARBOR BLVD
SLIDELL, LA 70458

JOB No: 2513 | DATE: 08-03-2025
DRAWN BY: CKD | CHECKED BY: JMS

SHEET TITLE:
PLUMBING DRAIN, WASTE,
AND VENT PLAN

DRAWING NUMBER:
101

SHEET No: 43 of 52