

SPECIFIC HVAC NOTES	
1	CONTRACTOR SHALL EXTEND SUPPLY AIR TRUNK DUCT MINIMUM 24" BEYOND LAST BRANCH DUCT TAKEOFF.
2	INLINE FAN MOUNTED ABOVE CEILING. SEE DETAIL FOR CLARITY.
3	CEILING MOUNTED EXHAUST FAN. SEE DETAIL FOR CLARITY.
6	TYPICAL DUCTWORK ROUTED UP/DOWN TO FLOOR ABOVE/BELOW. SIZE AS INDICATED ON PLANS. PROVIDE BOXOUTS IN FLOOR SLABS OF ADEQUATE SIZE TO ACCOMMODATE DUCTWORK INSULATION REQUIREMENTS. COORDINATE LOCATIONS WITH GENERAL CONTRACTOR.
8	EXHAUST AIR DUCT ROUTED UP THROUGH ROOF TO RELIEF CAP. SEE SCHEDULE AND DETAIL FOR MORE INFORMATION.
9	TYPICAL OUTSIDE AIR INTAKE DUCT ROUTED FROM ROOF INTAKE HOOD TO HVAC EQUIPMENT AS INDICATED.
10	TWO (2) EACH VENTILATION LOUVERS (SIZE AS INDICATED) EQUAL TO GREENHECK MODEL ESD-403 WITH FULL SIZE SLEEVE THRU WALL. PROVIDE WITH SCREEN AND KYNAR FINISH. MOUNT ONE LOUVER WITH BOTTOM AT ±12" A.F.F. AND ONE WITH BOTTOM OF LOUVER AT ±8" 0" A.F.F. VERIFY COLOR AND LOCATION WITH ARCHITECT.
12	ROLL DUCTWORK UP/DOWN UTILIZING MAXIMUM 45 DEGREE ELBOWS AS REQUIRED TO AVOID CONFLICT.

SPECIFIC HVAC NOTES	
16	INSTALL MAGNETIC GAUGES (0-0.25"W.C.) AS INDICATED ON WALL IN CORRIDOR. INSTALL IN DOOR OF CONTROL PANEL ENCLOSURE FOR NEAT APPEARANCE AND TO ALLOW ACCESS TO SAMPLING TUBE CONNECTIONS. THREE (3) REQUIRED. COORDINATE LOCATION WITH OTHER WALL INSTALLATION THIS AREA. ADVANCED LAB 135 IS POSITIVE WITH RESPECT TO ALL ADJACENT ROOMS. ADVANCED PROCEDURE IS NEGATIVE WITH RESPECT TO ADVANCED LAB BUT POSITIVE WITH RESPECT TO CORRIDOR. INSTALL SAMPLING PORTS IN CEILING AND CONNECT TO BOTH HIGH AND LOW PRESSURE PORTS WITH INTERCONNECTING TUBING. CONCEAL TUBING IN WALL AT MAGNETIC GAUGES.
17	INSTALL HVAC ALARM ANNUNCIATION PANEL/LIGHT FOR AHU-01 ON WALL. COORDINATE LOCATION WITH OTHER WALL INSTALLATION THIS AREA.
18	INSTALL FILTER HOUSING UV LAMP ALARM/MONITORING PANEL ON WALL. COORDINATE LOCATION WITH OTHER WALL INSTALLATION THIS AREA.

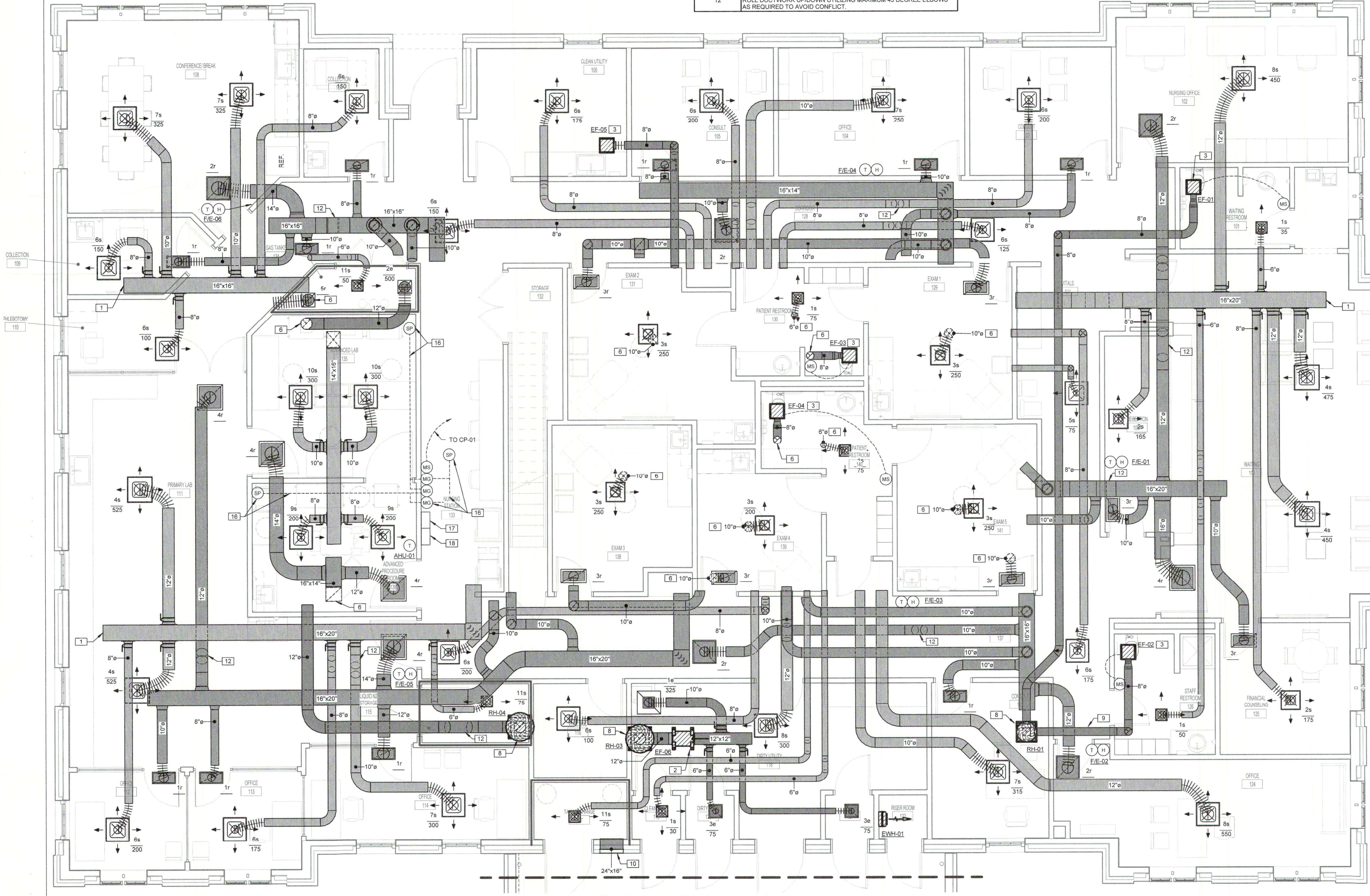
CODE REVIEW	
DESIGN CODE	2012 INTERNATIONAL CODE COUNCIL (ICC)
VENTILATION CODE	ASHRAE STANDARD 62 AND 170 - 2013 EDITION
FIRE SPRINKLER	NFPA 13 - 2013

DRAWING INDEX - HVAC	
Sheet Number	Sheet Name
M1.0	FIRST LEVEL HVAC PLAN
M1.1	MEZZANINE LEVEL HVAC PLAN
M2.0	MECHANICAL ISOMETRIC AND SECTIONS
M3.0	MECHANICAL SCHEDULES
M4.0	MECHANICAL NOTES, LEGEND, AND DETAILS
M4.1	MECHANICAL DETAILS

WIER BOERNER ALLIN ARCHITECTURE
 2727 OLD CANTON RD, SUITE 200
 JACKSON, MISSISSIPPI 39216
 P:601.321.9107 F:601.321.9108

FOUNTAINS DOCTOR'S OFFICE

9.29.17
 FOUNTAINS BLVD.
 MADISON, MS 39110



FIRST LEVEL HVAC PLAN
 M1.0 1/4" = 1'-0"



SEPTEMBER 29, 2017
 CONSTRUCTION DOCUMENTS
 WBA #: 2217

REVISIONS		
NO.	DESCRIPTION	DATE

GSK MECHANICAL
 301 PARK COURT SUITE A
 RIDGELAND, MS 39157
 PHONE: 601-605-2930
 FAX: 1-844-493-3111
 www.gskmech.com
GSK# 116-002

M1.0
 FIRST LEVEL HVAC PLAN