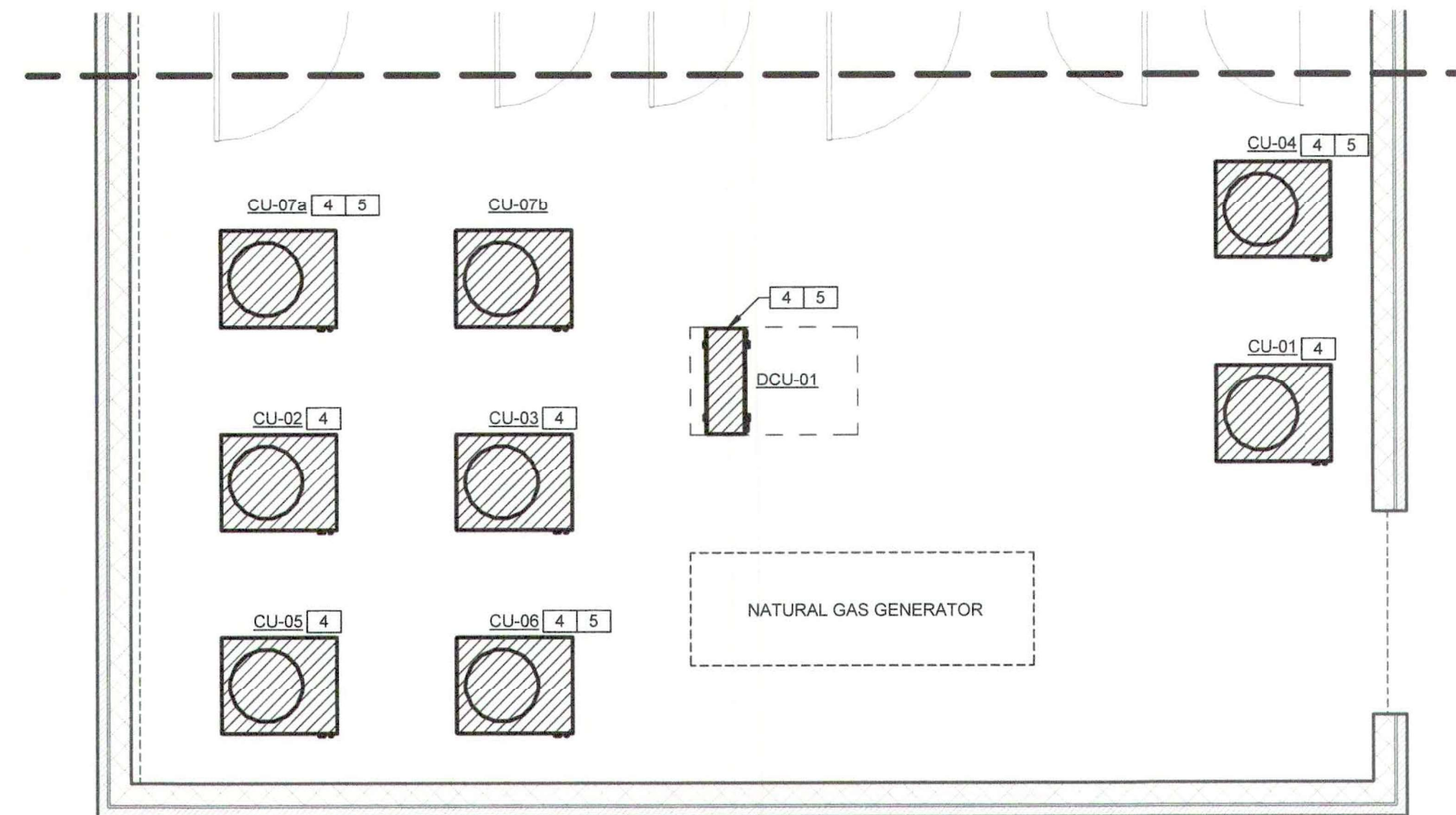
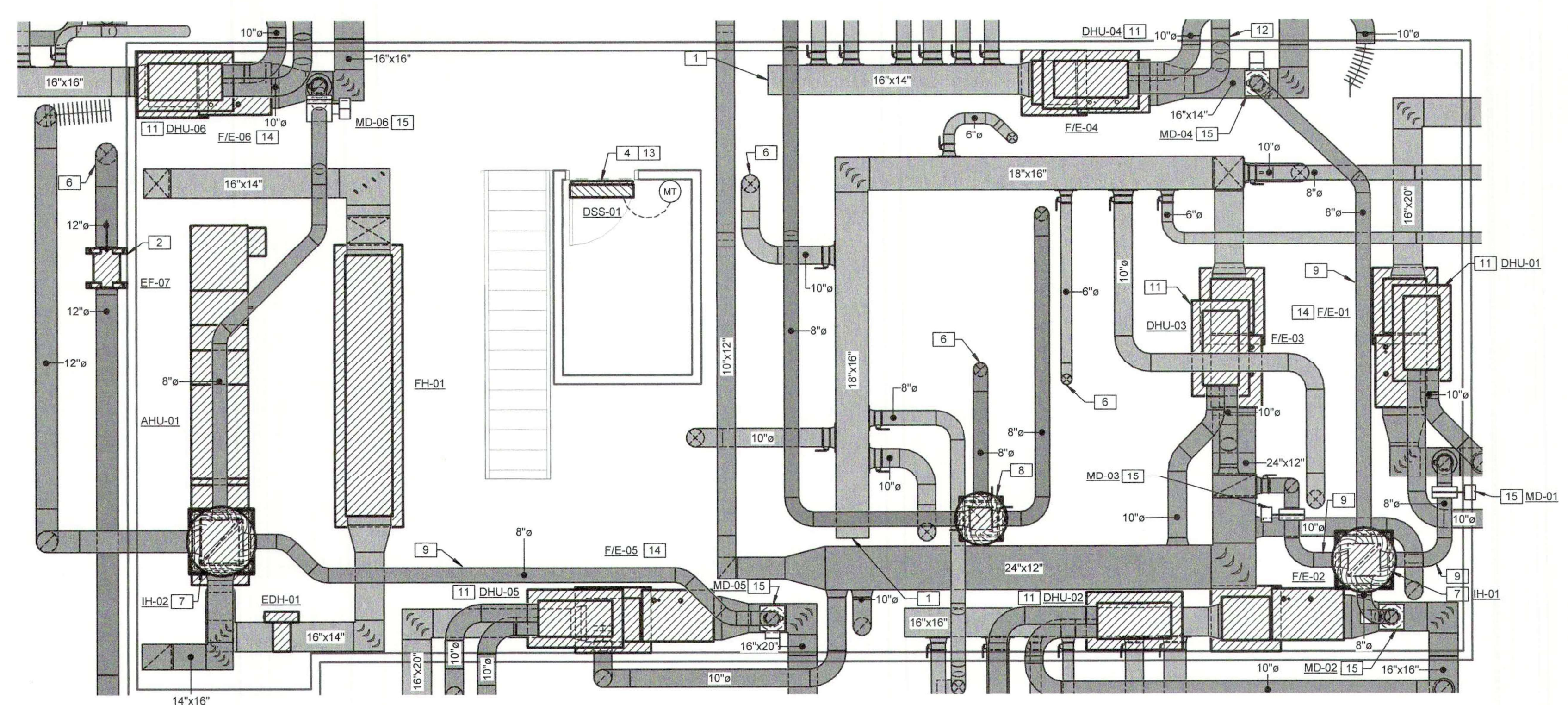


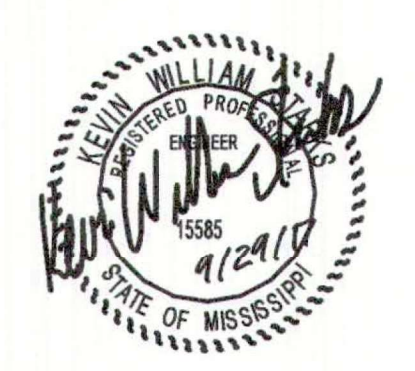
SPECIFIC HVAC NOTES	
1	CONTRACTOR SHALL EXTEND SUPPLY AIR TRUNK DUCT MINIMUM 24" BEYOND LAST BRANCH DUCT TAKEOFF.
2	INLINE FAN MOUNTED ABOVE CEILING. SEE DETAIL FOR CLARITY.
4	PROVIDE AND INSTALL MANUFACTURER'S RECOMMENDED SIZE AND CONFIGURATION REFRIGERANT PIPING ROUTED CONCEALED BETWEEN INDOOR EVAPORATOR COIL AND MATCHING CONDENSING UNIT.
5	TYPICAL CONDENSING UNIT MOUNTED ON CONCRETE PAD. MAINTAIN MANUFACTURER RECOMMENDED CLEARANCES.
6	TYPICAL DUCTWORK ROUTED UP/DOWN TO FLOOR ABOVE/BELOW. SIZE AS INDICATED ON PLANS. PROVIDE BOXOUTS IN FLOOR SLABS OF ADEQUATE SIZE TO ACCOMMODATE DUCTWORK INSULATION REQUIREMENTS. COORDINATE LOCATIONS WITH GENERAL CONTRACTOR.
7	OUTSIDE AIR DUCT ROUTED UP THROUGH ROOF TO INTAKE HOOD. SEE SCHEDULE AND DETAIL FOR MORE INFORMATION.
8	EXHAUST AIR DUCT ROUTED UP THROUGH ROOF TO RELIEF CAP. SEE SCHEDULE AND DETAIL FOR MORE INFORMATION.
9	TYPICAL OUTSIDE AIR INTAKE DUCT ROUTED FROM ROOF INTAKE HOOD TO HVAC EQUIPMENT AS INDICATED.
11	DUCTED DEHUMIDIFIER MOUNTED HIGH IN SPACE. SEE DETAIL FOR CLARITY.
12	ROLL DUCTWORK UP/DOWN UTILIZING MAXIMUM 45 DEGREE ELBOWS AS REQUIRED TO AVOID CONFLICT.
13	TYPICAL WALL MOUNTED DUCTLESS HEAT PUMP UNIT MOUNTED HIGH ON WALL OVER DOOR. SEE DETAIL FOR CLARITY.
14	TYPICAL FURNACE/EVAPORATOR. SEE DETAIL.
15	PROVIDE TWO-POSITION MOTORIZED DAMPER WITH 24V. ACTUATOR. INTERLOCK DAMPER ACTUATOR TO OPEN UPON ENERGIZATION OF BLOWER MOTOR.



**2**  
M1.1 **OUTDOOR MECHANICAL ENCLOSURE PLAN**  
1/4" = 1'-0"



**1**  
M1.1 **MEZZANINE LEVEL HVAC PLAN**  
1/4" = 1'-0"



SEPTEMBER 29, 2017  
CONSTRUCTION DOCUMENTS  
WBA #: 2217

REVISIONS		
NO.	DESCRIPTION	DATE

**GSK**  
MECHANICAL  
201 PARK COURT SUITE A  
RIDGELAND, MS 39157  
PHONE: 601-605-2930  
FAX: 1-844-693-3111  
www.gskmech.com  
GSK# 116-002

**M1.1**  
MEZZANINE LEVEL HVAC  
PLAN