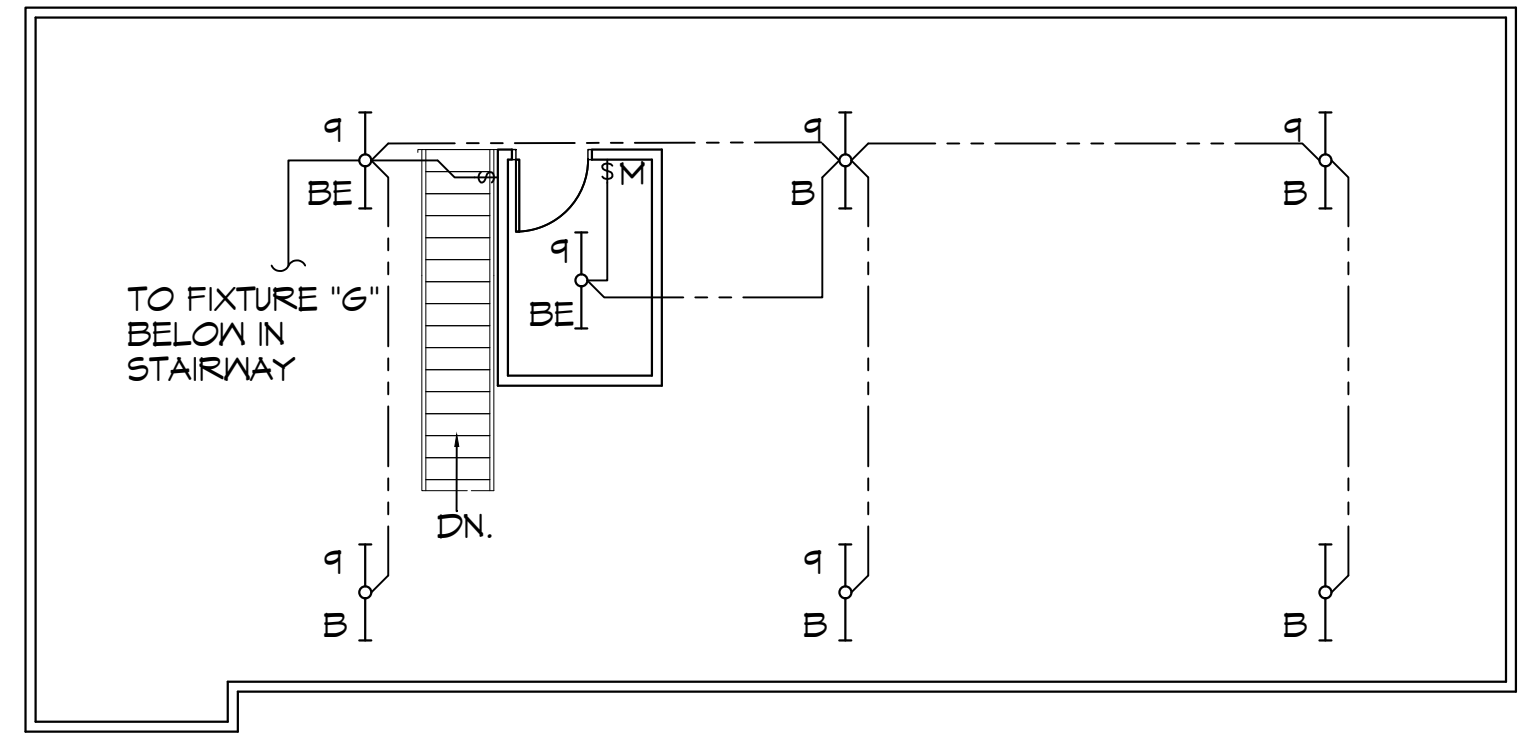


**3 LIGHTING PLAN**  
SCALE: 3/16"=1'-0"

FIRST FLOOR



**4 LIGHTING PLAN- MEZZANINE**  
SCALE: 3/16"=1'-0"

SECOND FLOOR

**ADDITIONAL LIGHTING NOTES**

MARK	DESCRIPTION
①	USE GRS CONDUITS AND PROVIDE EXPLOSION PROOF FITTING FOR ALL CONNECTIONS IN GAS TANK STORAGE 134.

**GENERAL LIGHTING NOTES**

- ALL WORK SHALL COMPLY WITH APPLICABLE NATIONAL, STATE, AND LOCAL CODES, RULES, REGULATIONS, AND REQUIREMENTS OF THE SERVICE UTILITY COMPANY.
- GENERAL CONTRACTOR SHALL NOTIFY THE ARCHITECT IMMEDIATELY IF ANY CONFLICTS OCCUR BETWEEN LIGHTING AND ANY OTHER TRADE. DO NOT PROCEED WITH INSTALLATION IN THAT AREA UNTIL CONFLICT HAS BEEN RESOLVED TO THE SATISFACTION OF THE ARCHITECT AND ENGINEER.
- REFER TO ARCHITECTURAL DRAWINGS FOR EXACT LOCATION AND MOUNTING INSTRUCTIONS FOR ALL LIGHT FIXTURES. NOTIFY THE ARCHITECT AND ENGINEER OF ANY DISCREPANCIES BETWEEN THESE PLANS AND THE ARCHITECTURAL PLANS RELATING TO QUANTITY, TYPE AND LOCATION OF DEVICES AND/OR FIXTURES.
- WHEN SPECIFIC LIGHT FIXTURE HAS BEEN SPECIFIED IN THE FIXTURE SCHEDULE, ELECTRICAL CONTRACTOR SHALL PROVIDE COMPLETE ASSEMBLY INCLUSIVE ALL PARTS AND HARDWARE TO INSURE PROPER FUNCTIONING FIXTURE.
- ALL CONDUCTORS SHALL BE A MINIMUM OF #12 AWG UNLESS NOTED OTHERWISE.
- ALL 120V RUNS LONGER THAN 60 FEET SHALL BE #10 AWG AND 277V RUNS LONGER THAN 150 FEET SHALL BE #10 AWG UNLESS NOTED OTHERWISE.
- ALL CONDUCTORS SHALL BE COPPER.
- WHERE CONDUCTOR SIZES ARE NOTED ON DRAWINGS, THAT WIRE SIZE SHALL BE THROUGH THE ENTIRE RUN UNLESS OTHERWISE NOTED.
- MOUNTED LIGHT SWITCHES 48" AFF UNLESS NOTED OTHERWISE ON ARCHITECTURAL DRAWINGS.
- WHERE MORE THAN ONE SWITCH OCCURS IN THE SAME LOCATION, THEY SHALL BE INSTALLED IN A GANG TYPE BOX UNDER ONE COVER PLATE. ALL GANGED SWITCHES SHALL HAVE A COMMON SEAMLESS FACEPLATE. EACH MULTI-GANGED BOX SHALL BE NO MORE THAN SIX (6) SWITCHES WIDE. WHERE MORE THAN SIX (6) SWITCHES ARE SHOWN AT ONE (1) LOCATION, ADDITIONAL MULTI-GANGED BOXES SHALL BE STACKED VERTICALLY AND THE WIDTH OF THE MULTI-GANGS SHALL BE AS EVEN AS POSSIBLE.
- MINIMUM CONDUCTOR SIZE SHALL BE #12, 600V INSULATION. MINIMUM SIZE CONDUIT SHALL BE 3/4" ELECTRICAL METALLIC TUBING (EMT) FOR INTERIOR USE, 3/4" RIGID ALUMINUM FOR EXTERIOR USE ABOVE GRADE AND 1" SCHEDULE 40 PVC, BURIED A MINIMUM OF 18" FOR NON-VEHICULAR TRAFFIC AREAS. FOR CONDUITS BELOW GRADE, EMT SHALL BE USED WITH METAL STUD CONSTRUCTION AND ALL ASSEMBLY OCCUPANCIES. INTERIOR FITTINGS SHALL BE CAST WHERE EXPOSED ON WALLS, AND EXTERIOR FITTINGS SHALL BE CAST BOXES WITH NEMA 3R COVER(S).
- DROP/SUSPENDED CEILINGS - ALL WIRING ABOVE DROP/SUSPENDED CEILINGS SHALL BE PROTECTED FROM PHYSICAL DAMAGE WITH EMT, IN METAL STUD CONSTRUCTION, OR SCHEDULE 40 PVC, IN WOOD FRAME CONSTRUCTION. 6 FT LENGTH OF MC CABLE FOR EQUIPMENT WHIP(S) IS ALLOWED ABOVE DROPPED CEILING FROM A J-BOX TO LIGHT FIXTURES.
- EACH DIMMER SWITCH SHALL HAVE A WATTAGE RATING 25% HIGHER THAN THE TOTAL WATTAGE OF ALL LIGHTS TO BE CONTROLLED BY THE DIMMER. DIMMER SIZES 600, 1000, 1500, AND 2000 WATTS, LUTRON NOVA T-STAR. WHERE SWITCHES ARE GANGED WITH DIMMERS, THE SWITCHES SHALL ALSO BE LUTRON NOVA T-STAR. FLUORESCENT AND LOW VOLTAGE DIMMERS SHALL BE LUTRON NOVA T-STAR.
- ALL EMERGENCY EXIT LIGHT FIXTURES SHALL HAVE 90 MINUTE BATTERY BACKUP WITH INTEGRAL TEST BUTTON AND SHALL BURN CONTINUOUSLY.
- ALL FLUORESCENT FIXTURES THAT UTILIZE DOUBLE-ENDED LAMPS AND CONTAIN BALLASTS SHALL BE PROVIDED WITH A DISCONNECTING MEANS IN ACCORDANCE WITH NEC 410.736.

**DAMMON & MISSISSIPPI ENGINEERING, INC.**  
LOUISIANA

Chief Engineer: Brian Mistich, PE  
554 Old Spanish Trail  
Slidell, LA 70458  
www.dammonengineering.com  
info@dammonengineering.com  
PH: 985.649.5832

#	DESCRIPTION	DATE

SEAL:

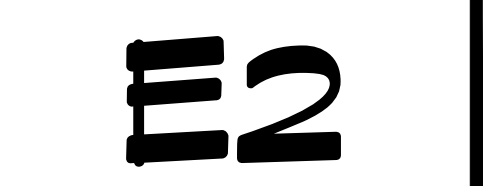
NEW MEDICAL OFFICE  
**POSITIVE STEPS FERTILITY**

500 OAK HARBOR BLVD  
SLIDELL, LA 70458

JOB No: 2319 DATE: 05-15-2025  
DRAWN BY: TMT CHECKED BY: GCP

SHEET TITLE:  
FIRST FLOOR  
SECOND FLOOR  
LIGHTING PLAN

DRAWING NUMBER:





**PANEL SCHEDULE**

PANEL:		MDP ELECTRICAL EQUIPMENT ROOM		INTERRUPTING RATING: 20 KAIC		VOLTAGE: 208/120V, 400A, 3Ø, 4 WIRE		ENCLOSURE: SURFACE MOUNTED W/ EQUIPMENT GND BAR 3Ø D TYPE GO LOAD CENTER	
CKT NO	THHN WIRE SIZE	LOAD DESCRIPTION	BREAKER	LOAD (VA)	LOAD (VA)	BREAKER	LOAD DESCRIPTION	THHN WIRE SIZE	CKT NO
		LOCATION	AMP POLE			POLE AMP	LOCATION		
1		PANEL 'MA'	125 3	9600	19200				2
3				9600	15400	3 225	PANEL 'LA'		4
5				8600	14800				6
7		AUTOMATIC TRANSFER SWITCH FOR PANEL 'EP'	200 3	15600	2400				8
9				15200	8700	3 225	PANEL 'LB'		10
11				12400	7400				12
13		SPARE	200 3	0	0				14
15				0	0	3 225	SPARE		16
17				0	0				18

SOLID NEUTRAL NEUTRAL WIRE (N)      TOTAL CONNECTED LOAD (VA) = 139100      GROUND BUS GROUND WIRE (G)

AD = 47200      BO = 48400      CO = 45000

**PANEL SCHEDULE**

PANEL:		MA ELECTRICAL EQUIPMENT ROOM		INTERRUPTING RATING: 20 KAIC		VOLTAGE: 208/120V, 200A, 3Ø, 4 WIRE		ENCLOSURE: SURFACE MOUNTED W/ EQUIPMENT GND BAR 3Ø D TYPE GO LOAD CENTER	
CKT NO	THHN WIRE SIZE	LOAD DESCRIPTION	BREAKER	LOAD (VA)	LOAD (VA)	BREAKER	LOAD DESCRIPTION	THHN WIRE SIZE	CKT NO
		LOCATION	AMP POLE			POLE AMP	LOCATION		
1		CU-1	50 2	2700	2700	2 50			2
3				2700	2700		CU-5		4
5		CU-2	40 2	2200	2200	2 40			6
7				2200	2200		CU-6		8
9		CU-3	50 2	2700	1500	2 30			10
11				2700	1500		CU-4		12
13		SPARE	30 2	0	0	2 30			14
15				0	0				16
17				0	0				18
19		SPARE	40 2	0	0	2 40			20
21				0	0				22
23		SPARE	50 2	0	0	2 50			24

SOLID NEUTRAL NEUTRAL WIRE (N)      TOTAL CONNECTED LOAD (VA) = 28000      GROUND BUS GROUND WIRE (G)

AD = 9800      BO = 9800      CO = 8800

**PANEL SCHEDULE**

PANEL:		LA ELECTRICAL EQUIPMENT ROOM		INTERRUPTING RATING: 20 KAIC		VOLTAGE: 208/120V, 225A, 3Ø, 4 WIRE		ENCLOSURE: FLUSH MOUNTED W/ EQUIPMENT GND BAR 3Ø D TYPE GO LOAD CENTER	
CKT NO	THHN WIRE SIZE	LOAD DESCRIPTION	BREAKER	LOAD (VA)	LOAD (VA)	BREAKER	LOAD DESCRIPTION	THHN WIRE SIZE	CKT NO
		LOCATION	AMP POLE			POLE AMP	LOCATION		
1	#12	LIGHTS (ELEG. OFFICE, STO. DIRTY UTILITY, CONSULT)	20 1	1100	200	1 20	RECEPT (CONFERENCE/BREAK)	#12	2
3	#12	LIGHTS (CORRIDOR, VITALS, PHLEBOTOMY)	20 1	1100	800	1 20	RECEPT (CONFERENCE/BREAK REFRIGERATOR)	#12	4
5	#12	LIGHTS (WAITING, RECEPT, RR, OFFICE, CONSULT)	20 1	800	700	1 20	RECEPT (CONFERENCE/BREAK COLL. PHLEB.)	#12	6
7	#12	LIGHTS (OFFICE, CONSULT)	20 1	700	400	1 20	RECEPT (NURSE STATION)	#12	8
9	#12	LIGHTS (EXAM ROOM, RR)	20 1	1400	400	1 20	RECEPT (NURSE STATION)	#12	10
11	#12	RECEPT (WAITING ROOM, COFFEE MAKER)	20 1	1400	400	1 20	RECEPT (NURSE STATION)	#12	12
13	#12	RECEPT (ELEG. DIRTY UTILITY, CORRIDOR)	20 1	1400	200	1 20	RECEPT (NURSE STATION)	#12	14
15	#12	RECEPT (OFFICE)	20 1	1100	200	1 20	RECEPT (NURSE STATION)	#12	16
17	#12	RECEPT (OFFICE)	20 1	1400	400	1 20	RECEPT (EXAM 3)	#12	18
19	#12	RECEPT (DIRTY UTILITY)	20 1	500	700	1 20	RECEPT (EXAM 4)	#12	20
21	#12	RECEPT (CONSULT, OFFICE)	20 1	1400	700	1 20	RECEPT (PATIENT RR, CORRIDOR)	#12	22
23	#12	RECEPT (STAFF, RR, FINANCIAL COUNSELING)	20 1	1100	700	1 20	RECEPT (EXAM 5)	#12	24
25	#12	RECEPT (RECEPTION)	20 1	1100	200	1 20	RECEPT (VITALS)	#12	26
27	#12	RECEPT (WAITING)	20 1	900	200	1 20	RECEPT (VITALS)	#12	28
29	#12	RECEPT (DRINKING FOUNTAIN)	20 1	500	200	1 20	RECEPT (VITALS)	#12	30
31	#12	RECEPT (DRINKING FOUNTAIN)	20 1	500	200	1 20	RECEPT (VITALS)	#12	32
33	#12	RECEPT (NURSING OFFICE)	20 1	400	700	1 20	RECEPT (EXAM 1)	#12	34
35	#12	RECEPT (NURSING OFFICE)	20 1	1000	900	1 20	RECEPT (EXAM 2)	#12	36
37	#12	RECEPT (NURSING OFFICE)	20 1	1000	400	1 20	RECEPT, DATA (MEZZANINE)	#12	38
39	#12	RECEPT (NURSING OFFICE)	20 1	700	400	1 20	RECEPT, DATA (MEZZANINE)	#12	40
41	#12	RECEPT (NURSING OFFICE)	20 1	700	700	1 20	RECEPT, MECHANICAL MEZZANINE	#12	42
43	#12	RECEPT (NURSING OFFICE)	20 1	1400	2500	2 30	PROVISION FOR SPLIT SYSTEM (MECHANICAL MEZZANINE)	#10	44
45	#12	RECEPT (OFFICE, CORRIDOR)	20 1	1100	2500				46
47	#12	RECEPT (CLEAN UTILITY)	20 1	1100		1 20	SPARE		48
49	#12	RECEPT (COLLECTION, CONF/BREAK, CORRIDOR)	20 1	700		1 20	SPARE		50
51	#12	RECEPT (CONFERENCE/BREAK, DISHWASHER)	20 1	1400		1 20	SPARE		52
53	#12	RECEPT (CONFERENCE/BREAK)	20 1	400	1700	1 20	CONFERENCE/BREAK 100 - DISPOSAL	#12	54

SOLID NEUTRAL NEUTRAL WIRE (N)      TOTAL CONNECTED LOAD (VA) = 49200      GROUND BUS GROUND WIRE (G)

AD = 19200      BO = 15400      CO = 14800

**PANEL SCHEDULE**

PANEL:		LB ELECTRICAL EQUIPMENT ROOM		INTERRUPTING RATING: 20 KAIC		VOLTAGE: 208/120V, 225A, 3Ø, 4 WIRE		ENCLOSURE: FLUSH MOUNTED W/ EQUIPMENT GND BAR 3Ø D TYPE GO LOAD CENTER	
CKT NO	THHN WIRE SIZE	LOAD DESCRIPTION	BREAKER	LOAD (VA)	LOAD (VA)	BREAKER	LOAD DESCRIPTION	THHN WIRE SIZE	CKT NO
		LOCATION	AMP POLE			POLE AMP	LOCATION		
1	#12	MH-01, MECHANICAL MEZZANINE	20 1	1000	1000	1 20	LIGHTS, PARKING LOT	#12	2
3	#12	CP-01, MECHANICAL MEZZANINE	15 1	500	100	1 20	LIGHTS, EXTERIOR	#12	4
5		SPARE	20 1		300	1 20	LIGHTING CONTACTOR 'G1'	#12	6
7	#12	EP-01, EQUIPMENT MEZZANINE	15 1	700		1 20	SPARE		8
9	#12	EW-01	20 2	1500		1 20	SPARE		10
11				1500		1 20	SPARE		12
13	#12	DCU-01 ANS D55-01	20 2	1000		1 20	SPARE		14
15				1000		1 20	SPARE		16
17		SPARE	20 1			1 20	SPARE		18
19	#10	F/E-01, EQUIPMENT MEZZANINE	30 1	1400		1 20	SPARE		20
21	#10	F/E-02, EQUIPMENT MEZZANINE	25 1	1700		1 20	SPARE		22
23	#10	F/E-03, EQUIPMENT MEZZANINE	30 1	1400		1 20	SPARE		24
25	#12	F/E-04, EQUIPMENT MEZZANINE	20 1	1200		1 20	SPARE		26
27	#10	F/E-05, EQUIPMENT MEZZANINE	30 1	1400		1 20	SPARE		28
29	#10	F/E-06, EQUIPMENT MEZZANINE	25 1	1700		1 20	SPARE		30
31	#12	DH-01, EQUIPMENT MEZZANINE	20 1	1000		1 20	SPARE		32
33	#12	DH-02, EQUIPMENT MEZZANINE	20 1	1000		1 20	SPARE		34
35	#12	DH-03, EQUIPMENT MEZZANINE	20 1	1000		1 20	SPARE		36
37	#12	DH-04, EQUIPMENT MEZZANINE	20 1	600		1 20	SPARE		38
39	#12	DH-05, EQUIPMENT MEZZANINE	20 1	1000		1 20	SPARE		40
41	#12	DH-06, EQUIPMENT MEZZANINE	20 1	1000		1 20	SPARE		42
43		SPARE	20 1			1 20	SPARE		44
45		SPARE	20 1			1 20	SPARE		46
47		SPARE	20 1			1 20	SPARE		48
49		SPARE	20 1			1 20	SPARE		50
51		SPARE	20 1			1 20	SPARE		52
53		SPARE	20 1			1 20	SPARE		54

SOLID NEUTRAL NEUTRAL WIRE (N)      TOTAL CONNECTED LOAD (VA) = 24800      GROUND BUS GROUND WIRE (G)

AD = 8400      BO = 8700      CO = 7400

**PANEL SCHEDULE**

PANEL:		EP ELECTRICAL EQUIPMENT ROOM		INTERRUPTING RATING: 20 KAIC		VOLTAGE: 208/120V, 225A, 3Ø, 4 WIRE		ENCLOSURE: FLUSH MOUNTED W/ EQUIPMENT GND BAR 3Ø D TYPE GO LOAD CENTER	
CKT NO	THHN WIRE SIZE	LOAD DESCRIPTION	BREAKER	LOAD (VA)	LOAD (VA)	BREAKER	LOAD DESCRIPTION	THHN WIRE SIZE	CKT NO
		LOCATION	AMP POLE			POLE AMP	LOCATION		
1	#12	MEDICAL GAS ALARM PANEL	20 2	300	300	1 20	FACP	#12	2
3				1900		1 20	SPARE		4
5	#12	AHU-1	20 3	1400	1700	1 20	LIGHTS, PRIMARY LAB	#12	6
7				1400	1100	1 20	LIGHTS, ADVANCED LAB PROCEDURE	#12	8
9	#12	FH-01	20 2	1500	100	1 15	EF-05	#12	10
11				1500	700	1 15	EF-06	#12	12
13						1 20	SPARE		14
15					1400				16
17	#10	CU-07B	25 2	1400	1400	2 25	CU-07A	#10	18
19				1400	500	1 20	PATIENT TABLE, PROCEDURE	#12	20
21		SPARE	20 1		500	1 20	NKON MICROSCOPE ADVANCED LAB	#12	22
23	#12	PROVISIONS FOR UV LIGHT ON AHU-01	20 1	200	500	1 20	OLYMPUS MICROSCOPE ADVANCED LAB	#12	24
25	#12	RECEPT, PRIMARY LAB	20 1	400	500	1 20	FULL SIZE INCUBATOR ADVANCED LAB	#12	26
27	#12	RECEPT, PRIMARY LAB	20 1	400	500	1 20	6 WORK STATION ADVANCED LAB	#12	28
29	#12	RECEPT, PRIMARY LAB	20 1	400	500	1 20	4 WORK STATION ADVANCED LAB	#12	30
31	#12	RECEPT, PRIMARY LAB	20 1	400	500	1 20	4 WORK STATION ADVANCED LAB	#12	32
33	#12	RECEPT, PRIMARY LAB	20 1	400	500	1 20	MING BENCH TOP INCUBATOR ADVANCED LAB	#12	34
35	#12	RECEPT, FLOOR BOX, PRIMARY LAB	20 1	700	500	1 20	MING BENCH TOP INCUBATOR ADVANCED LAB	#12	36
37	#12	RECEPT, PRIMARY LAB	20 1	500	500	1 20	MING BENCH TOP INCUBATOR ADVANCED LAB	#12	38
39	#12	RECEPT, PROCEDURE	20 1	500		1 20	SPARE		40
41	#12	RECEPT, PROCEDURE	20 1	500		1 20	SPARE		42
43	#1	EDH-01	100 2	1500		1 20	SPARE		44
45				1500		1 20	SPARE		46
47	#12	FIRE ALARM BELL	20 1	500		1 20	SPARE		48
49						1 20	SPARE		50
51		SPARE	20 1			1 20	SPARE		52
53		SPARE	20 1			1 20	SPARE		54

SOLID NEUTRAL NEUTRAL WIRE (N)      TOTAL CONNECTED LOAD (VA) = 49400      GROUND BUS GROUND WIRE (G)

AD = 15000      BO = 15200      CO = 12400

**DAMMON ENGINEERING, INC.**  
LOUISIANA & MISSISSIPPI

www.dammonengineering.com  
info@dammon.com  
504 Oak Harbor Blvd  
Sibley, LA 70488  
PH: 985-649-5832

Field Engineer: Brian Natch, PE  
Senior Designer: Frank Sibley, LA 70488

REVISIONS	DATE	DESCRIPTION

SEAL:

**NEW MEDICAL OFFICE**

**POSITIVE STEPS FERTILITY**

500 OAK HARBOR BLVD  
SIBLEY, LA 70488

JOB No: 2519 DATE: 05-15-2025  
DRAWN BY: BNM  
CHECKED BY: BNM

SHEET TITLE: POWER PANELS



