

2727 OLD CANTON ROAD,
SUITE 200
JACKSON, MISSISSIPPI 39216
P:601.321.9107
F:601.321.9108

**POSITIVE STEPS
FERTILITY, DR. J.
PRESTON PARRY**

OWNER/DEVELOPER: DIANA
FOUNTAINS, LLC
OWNER CONSULTANT:
EVERETT CONSULTING GROUP,
LLC
GENERAL CONTRACTOR:
PROBITY CONTRACTING
GROUP, LLC

FEBRUARY 09, 2018

CONSTRUCTION DOCUMENTS

WBA #: 2217

REVISIONS

NO.	DESCRIPTION	DATE

E.SK01

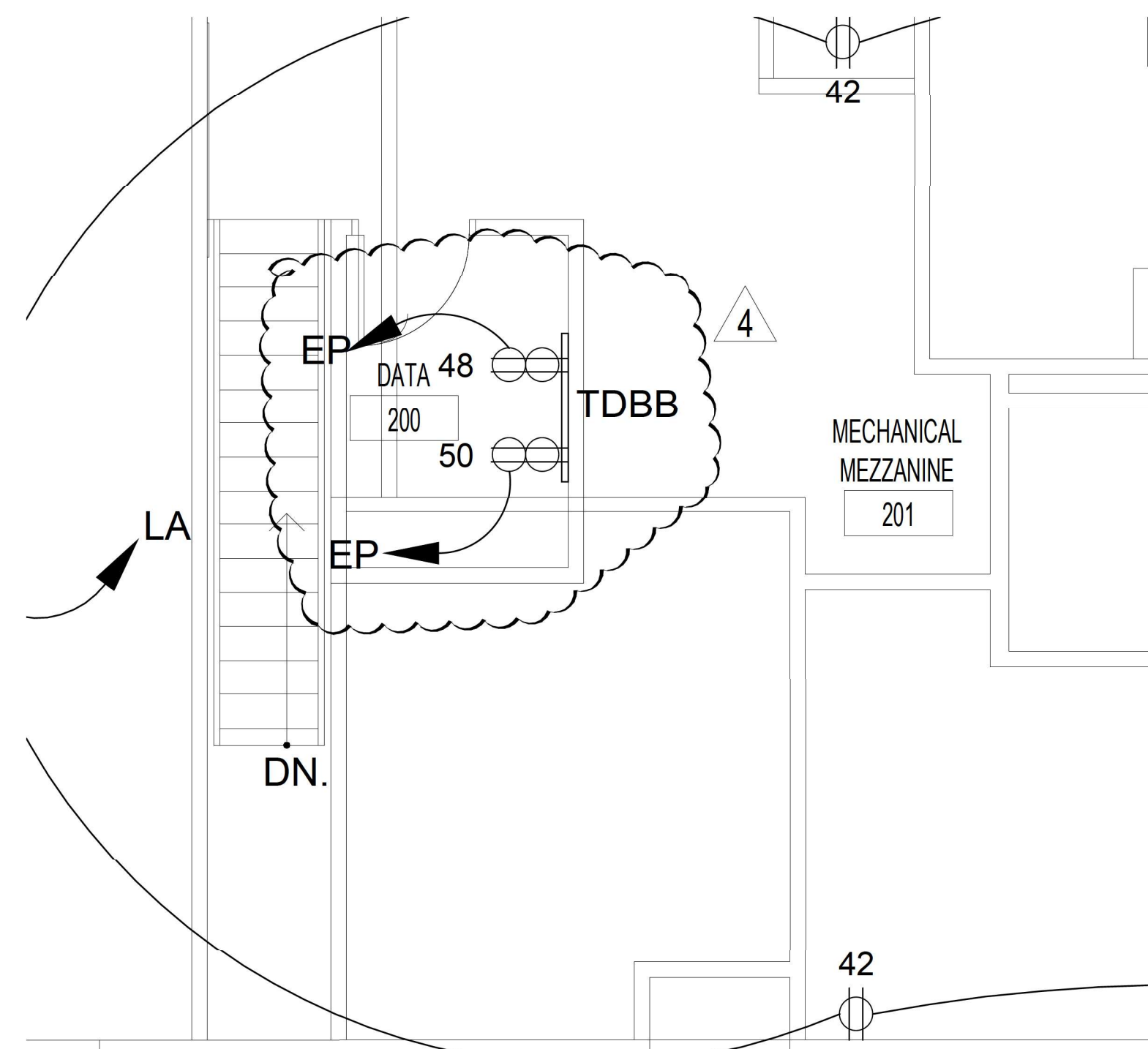
BULLETIN 4

MECHANICAL EQUIPMENT CONNECTIONS SCHEDULE

MARK	VOLTAGE	PANEL	CIRCUITRY	LOCAL DISCONNECT	REMARKS
AHU-01	208V, 3Ø	EP	3#12, #12(G), 1/2"C.	30/3/1	
CU-01	208V, 1Ø	MA	2#8, #10(G), 3/4"C.	60/2/3R	
CU-02	208V, 1Ø	MA	2#10, #10(G), 3/4"C.	30/2/3R	
CU-03	208V, 1Ø	MA	2#8, #10(G), 3/4"C.	60/2/3R	
CU-04	208V, 1Ø	MA	2#12, #12(G), 1/2"C.	30/2/3R	
CU-05	208V, 1Ø	MA	2#8, #10(G), 3/4"C.	60/2/3R	
CU-06	208V, 1Ø	MA	2#10, #10(G), 3/4"C.	30/2/3R	
CU-07a	208V, 1Ø	EP	2#10, #10(G), 3/4"C.	30/2/3R	
CU-07b	208V, 1Ø	EP	2#10, #10(G), 3/4"C.	30/2/3R	
DCU-01	208V, 1Ø	EP	2#12, #12(G), 1/2"C.	30/2/3R	INTERLOCKED WITH DSS-01
DSS-01	208V, 1Ø	EP	2#12, #12(G), 1/2"C.	TWO POLE SWITCH (\$ ^{2P})	INTERLOCKED WITH DCU-01
F/E-01	120V, 1Ø	LB	2#10, #10(G), 3/4"C.	MOTOR RATED SWITCH (\$ ^T)	
F/E-02	120V, 1Ø	LB	2#10, #10(G), 3/4"C.	MOTOR RATED SWITCH (\$ ^T)	
F/E-03	120V, 1Ø	LB	2#10, #10(G), 3/4"C.	MOTOR RATED SWITCH (\$ ^T)	
F/E-04	120V, 1Ø	LB	2#12, #12(G), 1/2"C.	MOTOR RATED SWITCH (\$ ^T)	
F/E-05	120V, 1Ø	LB	2#10, #10(G), 3/4"C.	MOTOR RATED SWITCH (\$ ^T)	
F/E-06	120V, 1Ø	LB	2#10, #10(G), 3/4"C.	MOTOR RATED SWITCH (\$ ^T)	
DH-01	120V, 1Ø	LB	2#12, #12(G), 1/2"C.	NEMA 5-20R	
DH-02	120V, 1Ø	LB	2#12, #12(G), 1/2"C.	NEMA 5-20R	
DH-03	120V, 1Ø	LB	2#12, #12(G), 1/2"C.	NEMA 5-20R	
DH-04	120V, 1Ø	LB	2#12, #12(G), 1/2"C.	NEMA 5-20R	
DH-05	120V, 1Ø	LB	2#12, #12(G), 1/2"C.	NEMA 5-20R	
DH-06	120V, 1Ø	LB	2#12, #12(G), 1/2"C.	NEMA 5-20R	
EWH-01	208V, 1Ø	MA	2#12, #12(G), 1/2"C.	TWO POLE SWITCH (\$ ^{2P})	
EF-01	120V, 1Ø	LA	2#12, #12(G), 1/2"C.	PROVIDED WITH EQUIPMENT	INTERLOCKED WITH LIGHTS
EF-02	120V, 1Ø	LA	2#12, #12(G), 1/2"C.	PROVIDED WITH EQUIPMENT	INTERLOCKED WITH LIGHTS
EF-03	120V, 1Ø	LA	2#12, #12(G), 1/2"C.	PROVIDED WITH EQUIPMENT	INTERLOCKED WITH LIGHTS
EF-04	120V, 1Ø	LA	2#12, #12(G), 1/2"C.	PROVIDED WITH EQUIPMENT	INTERLOCKED WITH LIGHTS
EF-05	120V, 1Ø	EP	2#12, #12(G), 1/2"C.	PROVIDED WITH EQUIPMENT	INTERLOCKED WITH AHU-01
EF-06	120V, 1Ø	EP	2#12, #12(G), 1/2"C.	PROVIDED WITH EQUIPMENT	INTERLOCKED WITH AHU-01
EF-07	120V, 1Ø	LB	2#12, #12(G), 1/2"C.	PROVIDED WITH EQUIPMENT	INTERLOCKED WITH EMS SYSTEM
FH-01	208V, 1Ø	EP	2#12, #12(G), 1/2"C.	TWO POLE SWITCH (\$ ^{2P})	INTERLOCKED WITH EMS SYSTEM
EDH-01	208V, 1Ø	EP	2#1, #6(G), 1-1/4"C.	100/2/1	
CP-01	120V, 1Ø	LB	2#12, #12(G), 1/2"C.	30/1/1	
WH-01	120V, 1Ø	LB	2#12, #12(G), 1/2"C.	5-20R	

General Note 1: Prior to submitting electrical equipment brochures, the Contractor shall verify location, actual equipment submittal data and adjust equipment services accordingly.

Note A: Cord and Plug provided by mechanical contractor and installed by electrical contractor.



REFERENCE SHEET E2.0

Scale: 1/8" = 1'-0"