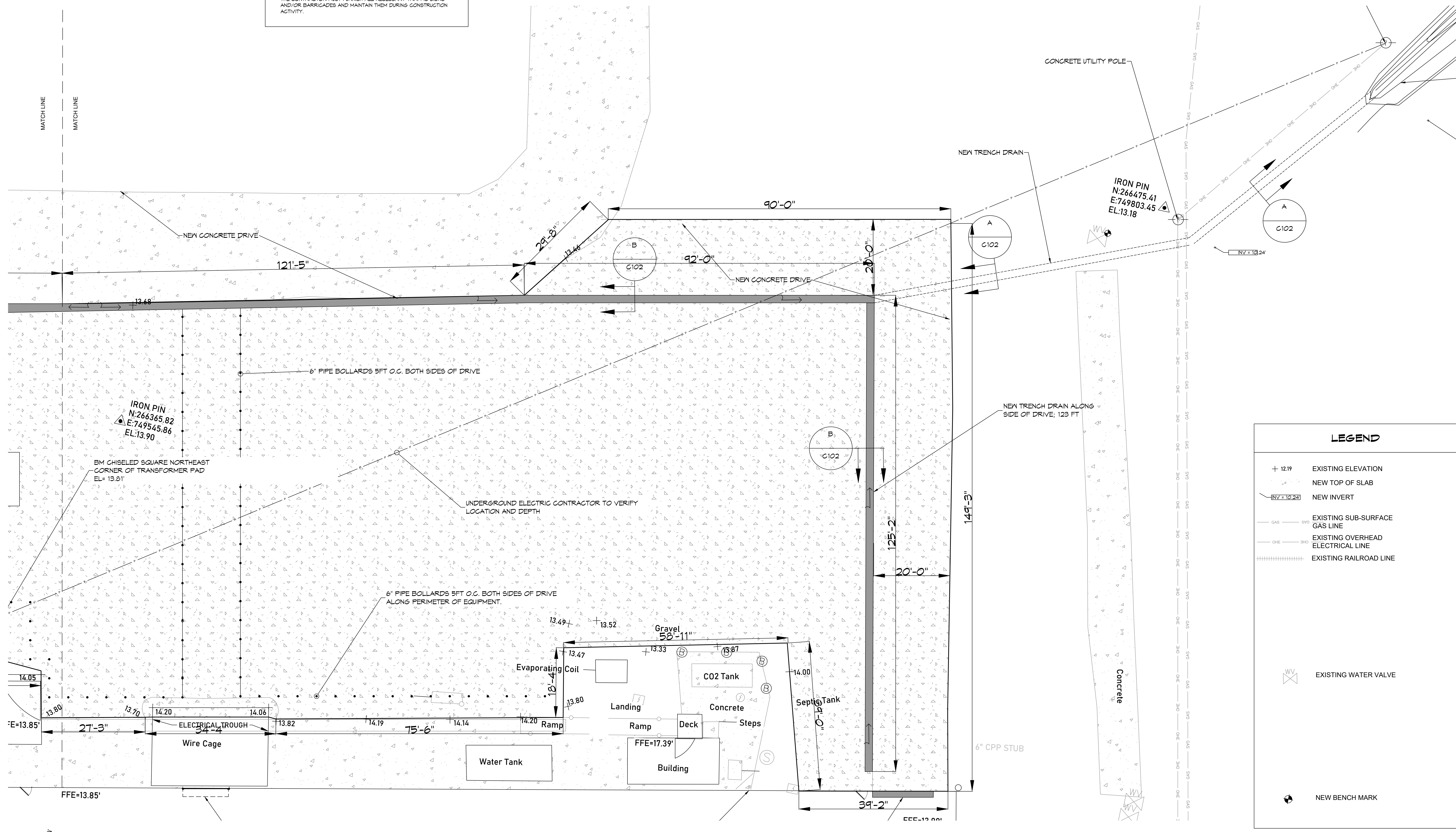


- ### GENERAL PAVING NOTES
- ALL NEW CONCRETE SHALL HAVE A MINIMUM COMPRESSIVE STRENGTH OF 4,000 PSI AT 28 DAYS AND A MINIMUM THICKNESS OF 6". CONCRETE MIX SHALL BE IN ACCORDANCE WITH THE LATEST REVISION OF ASTM C-150 TYPE 1.
 - CONCRETE PAVING THICKNESS SHALL VARY AS FOLLOWS:
 - APRONS & LOADING AREAS = 8" THICKNESS
 - DRIVE LANES & PARKING AREAS = 6" THICKNESS
 - ALL REINFORCING STEEL SHALL MEET ASTM-A615 (GRADE 60).
 - ALL REINFORCING STEEL SHALL BE SECURELY SUPPORTED TO PREVENT BOTH VERTICAL AND HORIZONTAL MOVEMENT DURING CONCRETE PLACEMENT. ALL CONTROL AND EXPANSION JOINTS SHALL BE LOCATED AND INSTALLED AS SHOWN ON THE PAVING PLAN AND IN ACCORDANCE WITH THE MANUFACTURER'S RECOMMENDATIONS.
 - ALL SUB GRADE FILL SHALL BE SELECT GRANULAR MATERIAL COMPACTED TO 95% STANDARD PROCTOR DENSITY IN A MAXIMUM OF 6" LIFTS.
 - CONTRACTOR SHALL CONTACT THEIR REGULATORY DEPARTMENT OF ENGINEERING PRIOR TO CONDUCTING ANY WORK.
 - ANY WORK WITHIN THE ROADWAY OR ADJACENT TO THE ROADWAY CAUSING AN INTERFERENCE TO VEHICULAR TRAFFIC REQUIRES PRIOR APPROVAL FROM THE CITY TRAFFIC ENGINEERING DIVISION, AND MUST CONFORM TO THE REQUIREMENTS SET FORTH BY THE UNIFORM MANUAL OF TRAFFIC CONTROL DEVICES OF THE STATE OF LOUISIANA. THE CONTRACTOR MUST FURNISH ALL NECESSARY TRAFFIC SIGNS AND/OR BARRICADES AND MAINTAIN THEM DURING CONSTRUCTION ACTIVITY.



LEGEND

$+ 12.19$	EXISTING ELEVATION
---	NEW TOP OF SLAB
---	NEW INVERT
---	EXISTING SUB-SURFACE GAS LINE
---	EXISTING OVERHEAD ELECTRICAL LINE
---	EXISTING RAILROAD LINE
---	EXISTING WATER VALVE
---	NEW BENCH MARK

DAMMON ENGINEERING INC.
 654 Old Spanish Trail, Suite 100, Metairie, LA 70008
 (504) 885-8832
 www.dammonengineering.com
 info@dammonengineering.com
 Ph: 985.649.8832

#	DESCRIPTION	DATE	REVISIONS

SEAL: _____

90% Review

MATERIAL STORAGE YARD

JUNDA L U S A

SHEET TITLE: SITE PLAN
 DRAWING NUMBER:
C101.2
 SHEET No: 1 of 1