



BUILDING DESCRIPTION		
WIDTH:	35'-0"	
LENGTH:	95'-0"	
BACK SW HT:	20'-0"	
FRONT SW HT:	20'-0"	
BACK ROOF SLOPE:	4.0:12	
FRONT ROOF SLOPE:	4.0:12	
CODES AND REFERENCES		
BUILDING:	IBC 21	
HOT ROLLED STEEL:	AISC16	
COLD FORMED STEEL:	NAUS16	
GRAVITY LOADS		
DEAD:	2.50	
COLLATERAL:	1.00	
LIVE:	20.00	
REDUCIBLE?	Yes	
GROUND SNOW:	5.00	
ROOF SNOW:	3.50	
ROOF EXP. FACTOR:	1.00	
ROOF IMP. FACTOR:	1.00	
THERMAL FACTOR:	1.00	
WIND LOADS		
SPEED (Vult):	140.00	
SPEED (Vasd):	108.44	
IMPORTANCE FACTOR:	1.00	
OCCUPANCY/RISK CAT.:	II - Normal	
EXPOSURE FACTOR:	C	
INT. PRESS. COEF.:	+/- 0.55	
ENCLOSURE:	Partially Enclosed	
COMPONENTS & CLADDING LOADS (Ultimate)		
(ROOF)	PRESSURE (psf)	
	MEMBER	PANEL
INTERIOR	33.45	42.72
EDGE	33.45	42.72
CORNER	33.45	42.72
	SUCTION (psf)	
	MEMBER	PANEL
INTERIOR	-41.32	-100.35
EDGE	-66.53	-139.49
CORNER	-66.53	-139.49

SEISMIC LOADS		
EQUIVALENT LATERAL FORCE PROCEDURE		
IMPORTANCE FACTOR:	1.00	
OCCUPANCY/RISK CAT.:	II - Normal	
MAPPED SPECTRAL RESPONSE		
Ss:	0.0897	
S1:	0.0572	
DESIGN SPECTRAL RESPONSE		
Sds:	0.0957	
Sd1:	0.0915	
SITE CLASS:		
SITE CLASS:	d	
DESIGN CATEGORY:		
DESIGN CATEGORY:	B	
DESIGN BASE SHEAR		
LONGITUDINAL:	0.76	
TRANSVERSE:	0.70	
SEISMIC RESPONSE COEF. (Cs)		
RIGID FRAME:	0.0319	
LEFT ENDWALL:	0.0319	
RIGHT ENDWALL:		
FRONT SIDEWALL:	0.0319	
BACK SIDEWALL:	0.0319	
SEISMIC MODIFICATION FACT. (R)		
RIGID FRAME:	3.00	
LEFT ENDWALL:	3.00	
RIGHT ENDWALL:		
FRONT SIDEWALL:	3.00	
BACK SIDEWALL:	3.00	
ADDITIONAL LOADS (psf)		
SNOW DRIFT:		
MEZZANINE:		
DEAD:		
PARTITION DEAD:		
COLLATERAL ABOVE:		
COLLATERAL BELOW:		
LIVE:		
CRANE:		
CAPACITY:		
SERVICE CLASS:		
BRIDGE WEIGHT:		
HOIST/TROLLEY WEIGHT:		
MAXIMUM WHEEL LOAD:		

COLORS	
ROOF PANELS:	Galvalume
WALL PANELS:	NEED COLOR
BASE TRIM:	NEED COLOR
GABLE/EAVE/GUTTER TRIM:	NEED COLOR
DOWNSPOUTS:	NEED COLOR
FRAMED OPENING TRIM:	NEED COLOR
CORNER TRIM:	NEED COLOR
LINER/SOFFIT PANEL:	
LINER/SOFFIT TRIM:	
PRIMARY FRAMING:	Red Oxide
SECONDARY FRAMING:	Red Oxide
SERVICEABILITY (DEFLECTIONS)	
ENDWALL COLUMN WIND:	180
ENDWALL RAFTER LIVE:	180
ENDWALL RAFTER WIND:	180
WALL GIRT WIND:	90
WALL PANEL WIND:	60
ROOF PURLIN LIVE:	180
ROOF PURLIN WIND:	150
ROOF PANEL LIVE:	60
ROOF PANEL WIND:	60
RIGID FRAME HORIZONTAL DRIFT:	60
RIGID FRAME VERTICAL:	180
RIGID FRAME SEISMIC:	50
RIGID FRAME CRANE:	100
WIND BENT HORIZONTAL DRIFT:	60
WIND BENT SEISMIC:	50
MEZZANINE DEAD + LIVE:	
MEZZANINE LIVE ONLY:	
CRANE RUNWAY HORIZONTAL:	
CRANE RUNWAY VERTICAL:	
OTHER:	N/A
MATERIALS MIN. YIELD (ksi)	
HOT ROLLED BAR	50.00
STRUCTURAL STEEL SHEET	50.00
STRUCTURAL STEEL PLATE	50.00
COLD FORMED SHAPES	57.00
WALL SHEETING	60.00
ROOF SHEETING	60.00
BOLTS	A307 & A325

ACCESSORY SCHEDULE

3 - 3070M

Contractor / End User Responsibilities

It is the responsibility of the contractor/end user to ensure that all project plans and specifications comply with the applicable requirements of any governing building authorities. The supplying of sealed engineering data and drawings for the metal building system does not imply or constitute an agreement that the manufacturer or its design engineer is acting as the engineer of record for the project or design professional for a construction project.

The contractor/end user must secure all required approvals and permits from the appropriate agency. Approval of the drawings and calculations indicate that the manufacturer has correctly interpreted and applied the requirements of the contract, customer drawings, and specifications as were supplied to the manufacturer. (Sect. 4.2.1 AISC code of standard practices, 9th ed.)

Where discrepancies exist between the manufacturer's structural steel plans and the plans for other trades, the structural steel plans shall govern. (Sect. 3.3 AISC Code of Standard Practice 9th ed.)

Design considerations of any materials in the structure which are not furnished by the manufacturer are the responsibility of the contractor/end user and/or their engineers and not the manufacturer.

The contractor/end user is responsible for erection of steel and associated work in compliance with the manufacturer's "for construction" drawings.

All bracings as shown and provided by the manufacturer for this building is required and shall be installed by the erector as a permanent part of the structure.

Temporary supports, such as temporary guys, braces, false work, cribbing, or other elements required for the erection operation will be determined, furnished, and installed by the erector. These temporary supports shall secure the steel framing, or any partly assembled steel framing, against loads comparable in intensity to those for which the structure was designed, resulting from wind, seismic forces, and erection operations, but not the loads resulting from the performance of work by or the acts of others, nor such unpredictable loads as those due to tornado, explosion, or collision. (Sect. 7.9.1 AISC Code of Standard Practice, 9th ed.)

Warning: in no case should galvalume steel panels be used in conjunction with lead or copper. Both lead and copper have harmful corrosion effects on the aluminum zinc alloy coating when they are used in contact with galvalume steel panels. Even run-off from copper flashing, wiring, or tubing onto galvalume should be avoided as it can cause damage to the finish and void the warranty.

Bolt Tightening Requirements

All high strength bolts are A325 unless noted otherwise. High strength bolts shall be tightened by snug tight method in accordance with the latest edition AISC "Specification for Structural Joints using ASTM A325 or A490 bolts". A325 bolts shall be installed without washers when tightened by the "turn of the nut" method. All bolted connections, for shear/bearing connection type with bolt threads excluded from the shear plane shall be snug tight only.

Primer

All structural steel to receive a rust inhibitive primer. This primer is not a final paint finish and is not intended for long term exposure to the elements.

Approval Notes

The following conditions apply if these drawings are used as approval drawings: It is imperative that any changes to these drawings be made in contrasting ink (preferably red ink), have all instances of change clearly indicated, and be legible and unambiguous. A signature and date are required on all pages.

The manufacturer reserves the right to re-submit drawings with additional details or changes as required to avoid fabrication errors. This may impact the delivery schedule.

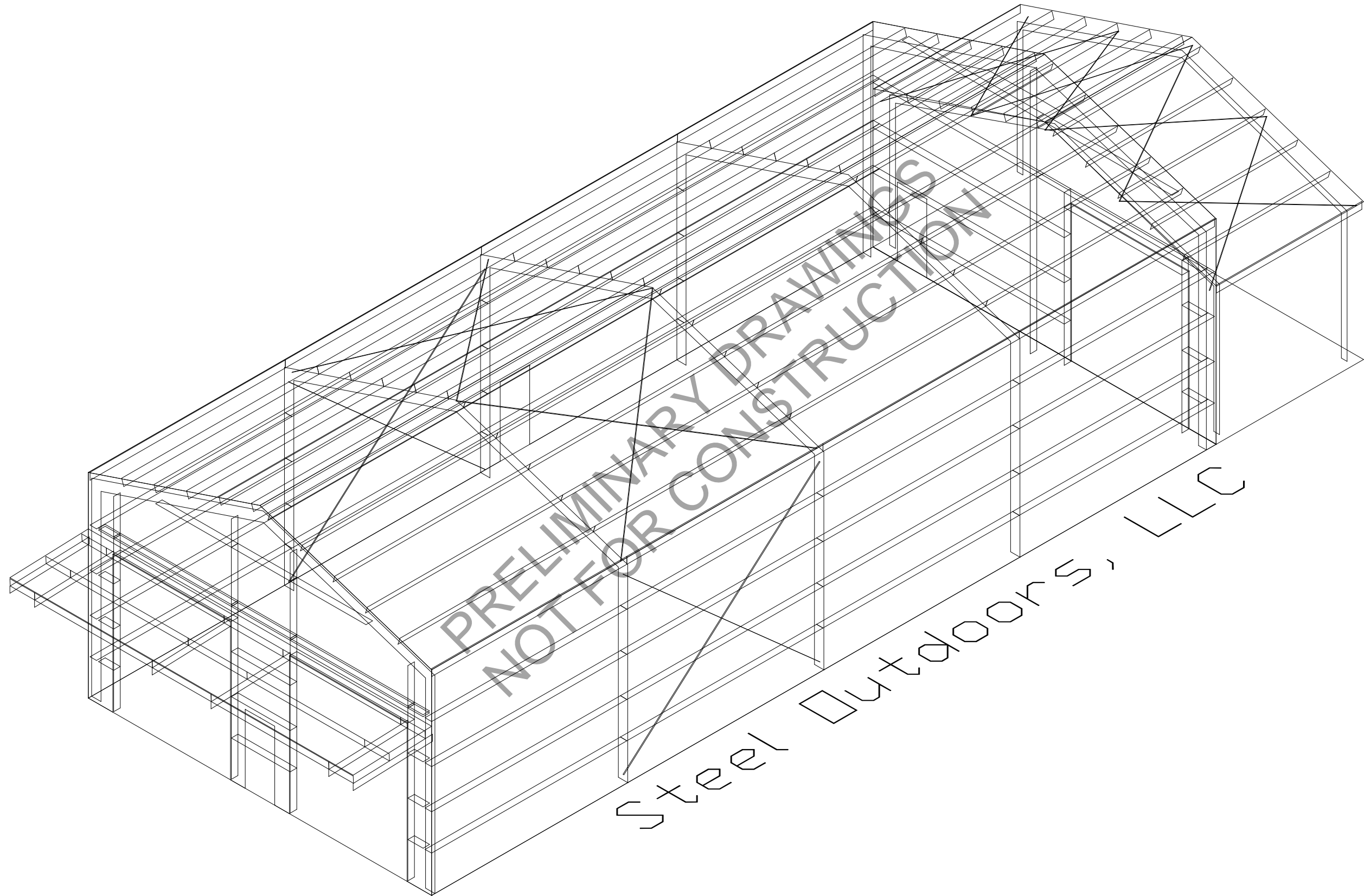
Approval of these drawings indicates conclusively that the manufacturer has correctly interpreted the contract documents and drawings, and further constitutes agreement that the building as shown on the manufacturer's plans, with indicated changes, represents the total of the materials to be supplied by the manufacturer to fulfill the contract agreement.

Any changes noted on the drawings not in conformance with the terms and requirements of the contract between the manufacturer and its customer are not legally binding unless, subsequently, specifically acknowledged and agreed to in writing by change order or separate documentation.

The manufacturer recognizes that "rubber stamps" are routinely used for indicating approval, disapproval, rejection, or mere review of the drawings submitted. However, the manufacturer does not accept changes or additions to contractual terms and conditions that may appear with use of a stamp or similar indication of approval, disapproval, etc. Such language applied to the manufacturer's drawings by the customer, architect, engineer, or any other party will be considered as unacceptable alternations to these drawing notes and will not alter the contractual rights and obligations existing between the manufacturer and its customer.

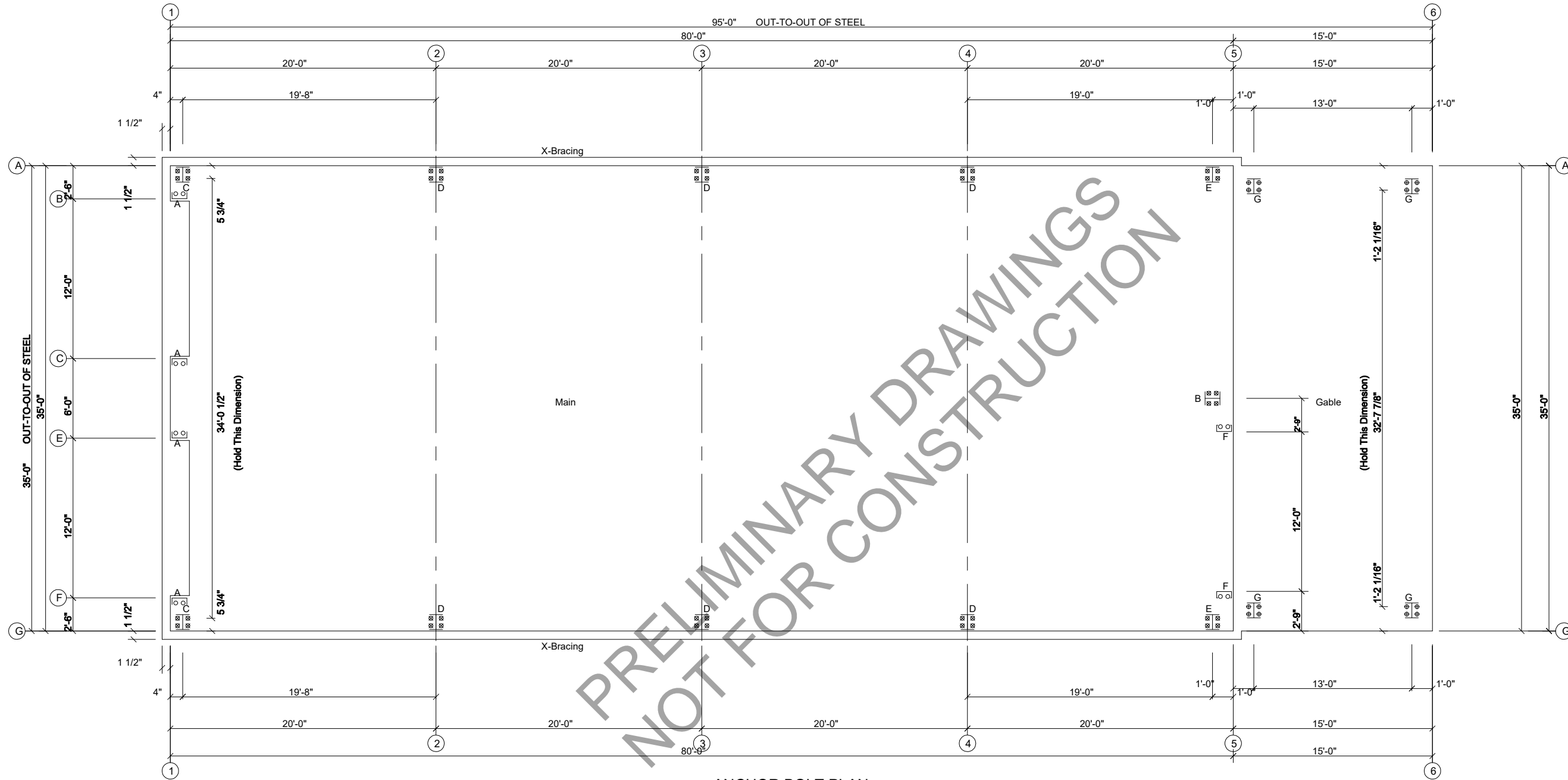
Final detailing, fabrication, and delivery date of this project cannot be completed until signed approvals are returned to the manufacturer.

DRAWING REVISIONS	DRAWING USAGE			24-SO-0748		SHEET		
				CUSTOMER	Rip Stoltz		PROJECT	Rip Stoltz
					Slidell, LA 70460			Slidell, LA 70460



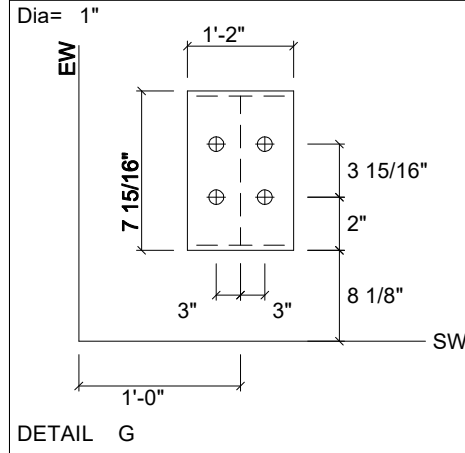
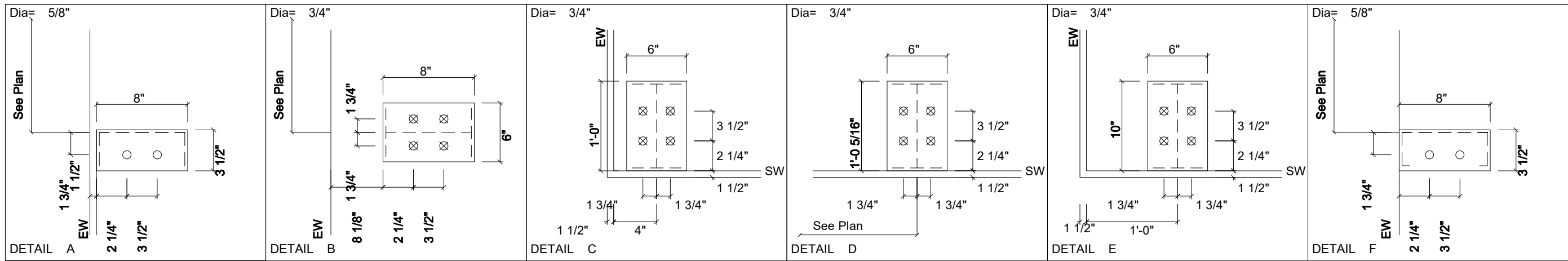
ANCHOR BOLT SUMMARY

Qty	Locate	Dia (in)	Type
4	Jamb	5/8"	A307
8	Endwall	5/8"	A307
4	Endwall	3/4"	A307
40	Frame	3/4"	A307
16	Frame	1"	A307



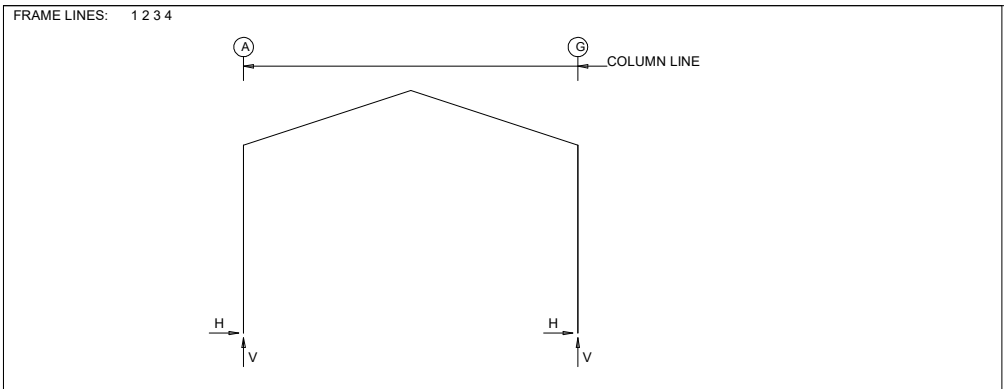
ANCHOR BOLT PLAN
NOTE: All Base Plates @ 100'-0" (U.N.)

DRAWING REVISIONS	DRAWING USAGE		ANCHOR BOLT PLAN & REACTIONS	24-SO-0748-Rev1	SHEET		
			CUSTOMER	Rip Stoltz		PROJECT	Rip Stoltz
			Slidell, LA 70460	Slidell, LA 70460			



PRELIMINARY DRAWINGS
NOT FOR CONSTRUCTION

<p>ANCHORS ARE DESIGNED FOR THE BASE PLATE TO ANCHOR INTERACTION PER AISC. ANCHOR TO CONCRETE INTERACTION IS BY OTHERS</p> <p>DESIGN OF SHEAR ANGLES, TENSION PLATES, HAIRPINS, AND ANY OTHER EMBEDDED MATERIAL IN THE CONCRETE SHALL BE DETERMINED BY THE FOUNDATION ENGINEER AND PROVIDED BY OTHERS.</p> <p>ANCHOR ROD PROJECTION IS FROM BOTTOM OF BASE PLATE UNLESS GROUT IS REQUIRED.</p>	<p>DIA. 1/2" 5/8" 3/4" 7/8" 1" 1 1/4"</p>	<p>PROJ. 1 1/2" 2" 2 1/2" 3 1/2" 3 1/2" 3 1/2"</p>	<p>HEAVY HEX NUT & WASHER</p> <p>FOUNDATION</p> <p>ANCHOR ROD ASTM F1554 GR36</p> <p>HEAVY HEX NUT</p> <p>TACK WELD</p>	<p>PROJ. 1 1/2"</p> <p>HEAVY HEX NUT & WASHER</p> <p>FOUNDATION</p> <p>LEVELING NUT</p> <p>ANCHOR ROD ASTM F1554 GR36</p> <p>HEAVY HEX NUT</p> <p>TACK WELD</p>	<p>STEEL LINE</p> <p>1 1/2"</p> <p>BASE ANGLE</p> <p>FIN. FLOOR</p> <p>NOTCH (IF REQ'D)</p>	<table border="1"> <tr> <td>JAMB WIDTH</td> <td>4"</td> <td>6"</td> <td>8"</td> <td>10"</td> <td>12"</td> </tr> <tr> <td>RAMP WIDTH</td> <td>7 1/2"</td> <td>9 1/2"</td> <td>11 1/2"</td> <td>13 1/2"</td> <td>15 1/2"</td> </tr> </table> <p>STEEL LINE</p> <p>1 1/2"</p> <p>RAMP WIDTH</p> <p>JAMB WIDTH</p> <p>3 1/2"</p> <p>FIN. FLOOR</p> <p>1 1/2"</p> <p>RAMP (IF REQ'D)</p> <p>NOTCH (IF REQ'D)</p>	JAMB WIDTH	4"	6"	8"	10"	12"	RAMP WIDTH	7 1/2"	9 1/2"	11 1/2"	13 1/2"	15 1/2"	<p>STEEL LINE</p> <p>1 1/2"</p> <p>JAMB WIDTH</p> <p>FIN. FLOOR</p> <p>1 1/2"</p> <p>RAMP (IF REQ'D)</p> <p>NOTCH (IF REQ'D)</p>
	JAMB WIDTH	4"	6"	8"	10"	12"													
RAMP WIDTH	7 1/2"	9 1/2"	11 1/2"	13 1/2"	15 1/2"														
GENERAL NOTES	ANCHOR RODS BY OTHERS		NUT w/o GROUT		NUT with GROUT		TYPICAL BASE SECTION	OVERHEAD DOOR BASE SECTION	FRAMED OPENING BASE SECTION	WEDGE ANCHOR BY OTHERS									



ENDWALL COLUMN: BASIC COLUMN REACTIONS (k)

Frm Line	Col Line	Dead Vert	Collat Vert	---Live---		---Snow---		Snow_Drift		Wind_Press		Wind_Suct		Seis Long	Seis Vert
				Horz	Vert	Horz	Vert	Horz	Vert	Horz	Vert	Horz	Vert		
1	B	0.4	0.1	-0.2	1.2	-0.1	0.4	-0.1	1.0	-2.9	-3.2	4.1	-0.8	0.0	
1	C	0.5	0.1	-0.2	1.4	-0.1	0.5	-0.1	1.2	-4.7	-3.9	6.0	-1.0	0.0	
1	E	0.5	0.1	-0.2	1.4	-0.1	0.5	-0.1	1.2	-4.7	-3.9	6.0	-1.0	0.0	
1	F	0.4	0.1	-0.2	1.2	-0.1	0.4	-0.1	1.0	-2.9	-3.2	4.1	-0.8	0.0	

ENDWALL COLUMN: MAXIMUM REACTIONS, ANCHOR BOLTS, & BASE PLATES

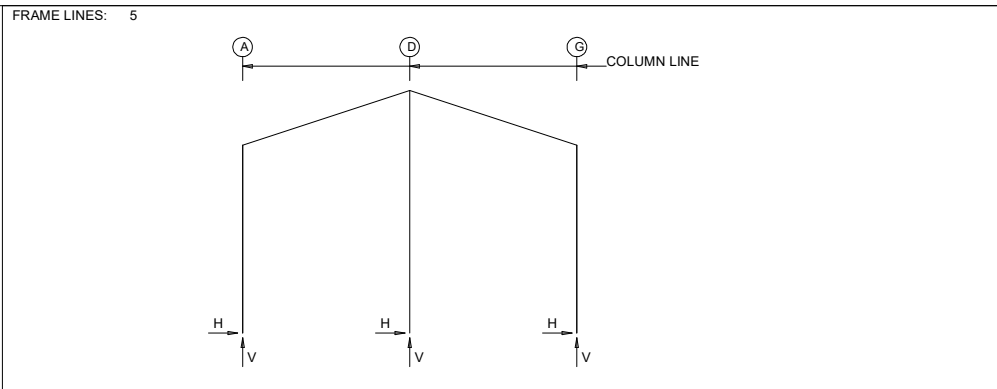
Frm Line	Col Line	Column_Reactions(k)				V		Bolt(in)	Base_Plate(in)		Thick	Grout (in)
		Load Id	Hmax	V	Load Id	Hmin	Qty	Dia	Width	Length		
1	B	17	2.4	-0.3	18	-1.8	2	0.625	3.500	8.000	0.250	0.0
		2	-0.3	1.8	16	-1.8						
1	C	17	3.6	-0.3	18	-2.8	2	0.625	3.500	8.000	0.250	0.0
		2	-0.3	2.3	16	-2.8						
1	E	17	3.6	-0.3	18	-2.8	2	0.625	3.500	8.000	0.250	0.0
		2	-0.3	2.3	16	-2.8						
1	F	17	2.4	-0.3	18	-1.8	2	0.625	3.500	8.000	0.250	0.0
		2	-0.3	1.8	16	-1.8						

BUILDING BRACING REACTIONS

Wall Loc	Col Line	Reactions(k)				Panel_Shear (lb/ft)		Note
		Wind Horz	Wind Vert	Seismic Horz	Seismic Vert	Wind	Seis	
L_EW	1							(h)
F_SW	G	2.3	6.7	6.2	0.3	0.3		(h)
R_EW	5							
B_SW	A	3.2	6.7	6.2	0.3	0.3		

(h) Rigid frame at endwall

Reactions for seismic represent shear force, Eh
Reaction values shown are unfactored



RIGID FRAME: MAXIMUM REACTIONS, ANCHOR BOLTS, & BASE PLATES

Frm Line	Col Line	Column_Reactions(k)				V		Bolt(in)	Base_Plate(in)		Thick	Grout (in)
		Load Id	Hmax	V	Load Id	Hmin	Qty	Dia	Width	Length		
1	A	4	3.3	-1.3	9	-4.4	4	0.750	6.000	12.00	0.375	0.0
		6	1.8	5.2	7	-2.7						
1	G	10	4.4	-1.9	3	-3.3	4	0.750	6.000	12.00	0.375	0.0
		5	-1.8	5.2	8	2.7						

RIGID FRAME: MAXIMUM REACTIONS, ANCHOR BOLTS, & BASE PLATES

Frm Line	Col Line	Column_Reactions(k)				V		Bolt(in)	Base_Plate(in)		Thick	Grout (in)
		Load Id	Hmax	V	Load Id	Hmin	Qty	Dia	Width	Length		
2*	A	4	4.8	-5.0	9	-6.9	4	0.750	6.000	12.31	0.500	0.0
		6	1.9	7.0	11	3.5						
2*	G	10	6.9	-1.9	3	-4.8	4	0.750	6.000	12.31	0.500	0.0
		5	-1.9	7.0	13	-3.5						

2* Frame lines: 2 3 4

RIGID FRAME: MAXIMUM REACTIONS, ANCHOR BOLTS, & BASE PLATES

Frm Line	Col Line	Column_Reactions(k)				V		Bolt(in)	Base_Plate(in)		Thick	Grout (in)
		Load Id	Hmax	V	Load Id	Hmin	Qty	Dia	Width	Length		
5	A	8	3.0	-1.1	9	-3.3	4	0.750	6.000	10.00	0.375	0.0
		6	0.8	3.2	12	2.3						
5	G	10	3.3	-0.1	7	-3.0	4	0.750	6.000	10.00	0.375	0.0
		5	-0.8	3.2	14	-2.3						
5	D	15	8.3	-5.9	16	-7.7	4	0.750	6.000	8.000	0.375	0.0
		1	0.0	5.6	8	0.0						

- NOTES FOR REACTIONS**
- All loading conditions are examined and only maximum/minimum H or V and the corresponding H or V are reported.
 - Positive reactions are as shown in the sketch. Foundation loads are in opposite directions.
 - Bracing reactions are in the plane of the brace with the H pointing away from the braced bay. The vertical reaction is downward.
 - Building reactions are based on the following building data:
 - Width (ft) = 35.0
 - Length (ft) = 80.0
 - Eave Height (ft) = 20.0/ 20.0
 - Roof Slope (rise/12) = 4.00/ 4.00
 - Roof Dead Load (psf) = 2.5
 - Wall Dead Load (psf) = 2.0
 - Left Endwall (psf) = 2.0
 - Right Endwall (psf) = 2.0
 - Front Sidewall (psf) = 2.0
 - Back Sidewall (psf) = 2.0
 - Roof Live Load (psf) = 20.0
 - Frame Live Load (psf) = 12.0
 - Min (psf) = 16.9
 - Max (psf) = 1.0
 - Collateral Load (psf) = 3.5
 - Snow Load (psf) = 140.0
 - Wind Speed (mph) = IBC 21
 - Wind Code = C
 - Closure = Partially Enclosed
 - Internal Wind Coeff = -0.55, +0.55
 - Risk Category = II - Normal
 - Importance - Wind = 1.00
 - Importance - Seismic = 1.00
 - Seismic Design Category = B
 - Seismic Coeff (Sms) = 0.14
 - Loading conditions are:
 - Dead+Collateral+Live
 - Dead+Collateral+Snow+Snow_Drift
 - Dead+0.6Wind_Left1
 - Dead+0.6Wind_Right1
 - Dead+Collateral+0.75Live+0.45Wind_Left2
 - Dead+Collateral+0.75Live+0.45Wind_Right2
 - 0.6Dead+0.6Wind_Left1
 - 0.6Dead+0.6Wind_Right1
 - 0.6Dead+0.6Wind_Left2
 - 0.6Dead+0.6Wind_Right2
 - 0.6Dead+0.6Wind_Long1L
 - 0.6Dead+0.6Wind_Long1R
 - 0.6Dead+0.6Wind_Long2L
 - 0.6Dead+0.6Wind_Long2R
 - 0.6Dead+0.6Wind_Right1+0.6Wind_Suction
 - 0.6Dead+0.6Wind_Pressure+0.6Wind_Long2L
 - 0.6Dead+0.6Wind_Right2+0.6Wind_Suction
 - Dead+0.6Wind_Pressure+0.6Wind_Long2L

RIGID FRAME: BASIC COLUMN REACTIONS (k)

Frame Line	Column Line	---Dead---		---Collateral---		---Live---		---Snow---		---Wind_Left1---		---Wind_Right1---	
		Horz	Vert	Horz	Vert	Horz	Vert	Horz	Vert	Horz	Vert	Horz	Vert
1	A	0.2	1.0	0.0	0.2	0.6	3.0	0.1	0.6	-4.7	-11.9	5.2	-3.9
1	G	-0.2	1.0	0.0	0.2	-0.6	3.0	-0.1	0.6	-5.2	-3.9	4.7	-11.9

Frame Line	Column Line	---Wind_Left2---		---Wind_Right2---		---Wind_Long1---		---Wind_Long2---		---Seismic_Left---		---Seismic_Right---	
		Horz	Vert	Horz	Vert	Horz	Vert	Horz	Vert	Horz	Vert	Horz	Vert
1	A	-7.5	-4.2	2.4	3.8	2.9	-9.6	1.6	-9.3	-0.1	0.1	0.1	-0.1
1	G	-2.4	3.8	7.5	-4.2	-1.6	-9.3	-2.9	-9.6	-0.1	0.1	0.1	-0.1

Frame Line	Column Line	F1UNB_SL_L-		F1UNB_SL_R-	
		Horz	Vert	Horz	Vert
1	A	0.1	0.6	0.1	0.4
1	G	-0.1	0.4	-0.1	0.6

Frame Line	Column Line	---Dead---		---Collateral---		---Live---		---Snow---		---Wind_Left1---		---Wind_Right1---	
		Horz	Vert	Horz	Vert	Horz	Vert	Horz	Vert	Horz	Vert	Horz	Vert
5	A	0.0	0.5	0.0	0.1	0.1	1.1	0.0	0.2	-2.1	-6.9	5.0	-2.3
5	G	0.0	0.5	0.0	0.1	-0.1	1.1	0.0	0.2	-5.0	-2.3	2.1	-6.9
5	D	0.0	1.4	0.0	0.3	0.0	4.0	0.0	0.8	0.0	-7.0	0.0	-7.0

Frame Line	Column Line	---Wind_Left2---		---Wind_Right2---		---Wind_Press---		---Wind_Suct---		---Wind_Long1---		---Wind_Long2---	
		Horz	Vert	Horz	Vert	Horz	Vert	Horz	Vert	Horz	Vert	Horz	Vert
5	A	-5.6	-0.6	1.6	4.1	0.0	0.0	0.0	0.0	3.8	-6.9	2.5	-6.7
5	G	-1.6	4.0	5.6	-0.6	0.0	0.0	0.0	0.0	-2.5	-6.7	-3.8	-7.0
5	D	0.0	-3.8	0.0	-3.8	-12.8a	0.0	13.8a	0.0	0.0	-5.9	0.0	-5.9

Frame Line	Column Line	---Seismic_Left---		---Seismic_Right---		F2PAT_LL_1-		F2PAT_LL_2-		F2UNB_SL_L-		F2UNB_SL_R-	
		Horz	Vert	Horz	Vert	Horz	Vert	Horz	Vert	Horz	Vert	Horz	Vert
5	A	-0.1	-0.1	0.1	0.1	0.0	1.3	0.0	-0.2	0.0	0.3	0.0	0.0
5	G	-0.1	0.1	0.1	-0.1	0.0	-0.2	0.0	1.3	0.0	0.0	0.0	0.3
5	D	0.0	0.0	0.0	0.0	0.0	2.0	0.0	2.0	0.0	0.8	0.0	0.8

Frame Line	Column Line	---Dead---		---Collateral---		---Live---		---Snow---		---Wind_Left1---		---Wind_Right1---	
		Horz	Vert	Horz	Vert	Horz	Vert	Horz	Vert	Horz	Vert	Horz	Vert
2*	A	0.3	1.7	0.1	0.4	0.9	4.2	0.3	1.2	-6.1	-19.9	7.6	-11.0
2*	G	-0.3	1.7	-0.1	0.4	-0.9	4.2	-0.3	1.2	-7.6	-11.0	6.1	-19.9

Frame Line	Column Line	---Wind_Left2---		---Wind_Right2---		---Wind_Long1---		---Wind_Long2---		---Seismic_Left---		---Seismic_Right---	
		Horz	Vert	Horz	Vert	Horz	Vert	Horz	Vert	Horz	Vert	Horz	Vert
2*	A	-11.7	-4.8	1.9	4.1	5.6	-21.2	4.1	-20.9	-0.1	-0.1	0.1	0.1
2*	G	-1.9	4.1	11.7	-4.8	-4.1	-20.9	-5.6	-21.2	-0.1	0.1	0.1	-0.1

Frame Line	Column Line	---Seismic_Long---		F3UNB_SL_L-		F3UNB_SL_R-	
		Horz	Vert	Horz	Vert	Horz	Vert
2*	A	0.0	-0.3	0.3	1.3	0.3	0.8
2*	G	0.0	-0.3	-0.3	0.8	-0.3	1.3

2* Frame lines: 2 3 4

a - Out-Of-Plane Horizontal Load

ANCHOR BOLT SUMMARY

Qty	Locate	Dia (in)	Type
4	Jamb	5/8"	A307
8	Endwall	5/8"	A307
4	Endwall	3/4"	A307
40	Frame	3/4"	A307

DRAWING REVISIONS

Rev	Description

DRAWING USAGE

Rev	Description

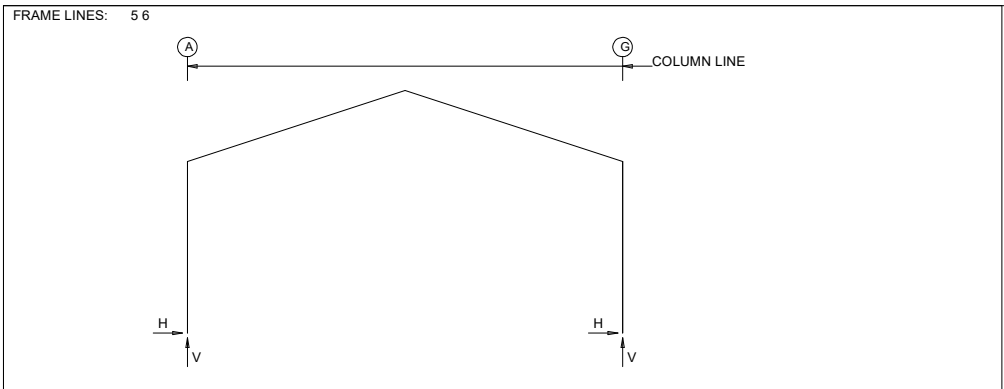
STEEL OUTDOORS

ANCHOR BOLT REACTIONS

Rev	Description

24-SO-0748-Rev1

Rev	Description



RIGID FRAME: BASIC COLUMN REACTIONS (k)

Frame Line	Column Line	---Dead---	---Collateral---	---Live---	---Snow---	--Snow_Drift--	--Wind_Left1--
		Horz	Vert	Horz	Vert	Horz	Vert
5*	A	0.2	0.8	0.0	0.1	0.1	0.5
5*	G	-0.2	0.8	0.0	0.1	-0.1	0.5

Frame Line	Column Line	-Wind_Right1-	-Wind_Left2-	-Wind_Right2-	-Wind_Long1-	-Wind_Long2-	-Seismic_Left
		Horz	Vert	Horz	Vert	Horz	Vert
5*	A	1.1	-4.1	-3.3	-0.2	0.3	1.2
5*	G	2.6	-5.6	-0.3	1.2	3.3	-0.2

Frame Line	Column Line	Seismic_Right	-Wind_Left3-	-Wind_Right3-	-Wind_Left4-	-Wind_Right4-	F1UNB_SL_L-
		Horz	Vert	Horz	Vert	Horz	Vert
5*	A	0.0	0.0	-2.6	-4.5	1.7	-3.4
5*	G	0.0	0.0	-1.7	-3.4	2.6	-4.5

Frame Line	Column Line	F1UNB_SL_R-	
		Horz	Vert
5*	A	0.1	0.3
5*	G	-0.1	0.5

5* Frame lines: 5 6

- NOTES FOR REACTIONS**
- All loading conditions are examined and only maximum/minimum H or V and the corresponding H or V are reported.
 - Positive reactions are as shown in the sketch. Foundation loads are in opposite directions.
 - Bracing reactions are in the plane of the brace with the H pointing away from the braced bay. The vertical reaction is downward.
 - Building reactions are based on the following building data:
 - Length (ft) = 35.0
 - Eave Height (ft) = 14.0/ 14.0
 - Roof Slope (rise/12) = 4.00/ 4.00
 - Roof Dead Load (psf) = 2.5
 - Wall Dead Load (psf) = 2.0
 - Left Endwall (psf) = 2.0
 - Right Endwall (psf) = 2.0
 - Front Sidewall (psf) = 2.0
 - Back Sidewall (psf) = 2.0
 - Roof Live Load (psf) = 20.0
 - Frame Live Load (psf) = 18.8
 - Collateral Load (psf) = 1.0
 - Snow Load (psf) = 3.5
 - Wind Speed (mph) = 140.0
 - Wind Code = IBC 21
 - Exposure = C
 - Closure = Partially Enclosed
 - Internal Wind Coeff = -0.55, +0.55
 - Risk Category = II - Normal
 - Importance - Wind = 1.00
 - Importance - Seismic = 1.00
 - Seismic Design Category = B
 - Seismic Coeff (Sms) = 0.14
 - Loading conditions are:
 - 1 Dead+Collateral+0.75Live+0.45Wind_Left3
 - 2 Dead+Collateral+0.75Live+0.45Wind_Right3
 - 3 Dead+Collateral+0.75Snow+0.75Snow_Drift+0.45Wind_Left4
 - 4 Dead+Collateral+0.75Snow+0.75Snow_Drift+0.45Wind_Right4
 - 5 0.6Dead+0.6Wind_Left4
 - 6 0.6Dead+0.6Wind_Right4
 - 7 0.6Dead+0.6Wind_Long1L
 - 8 0.6Dead+0.6Wind_Long1R

RIGID FRAME: MAXIMUM REACTIONS, ANCHOR BOLTS, & BASE PLATES

Frm Line	Col Line	Load Id	Column Reactions(k)				Hmin	V	Bolt(in) Qty	Dia	Base Plate(in)			Grout (in)
			Hmax	V	Load Id	Hmin					Width	Length	Thick	
5*	A	2	1.6	1.3	5	-1.9	1.0	4	1.000	14.00	7.938	1.250	0.0	
		4	1.2	3.7	8	0.2	-4.0							
5*	G	6	1.9	1.0	1	-1.6	1.3	4	1.000	14.00	7.938	1.250	0.0	
		3	-1.2	3.7	7	-0.2	-4.0							

5* Frame lines: 5 6

ANCHOR BOLT SUMMARY

Qty	Locate	Dia (in)	Type
⊕ 16	Frame	1"	A307

BUILDING BRACING REACTIONS

Loc	Wall Line	Col Line	± Reactions(k)				Panel Shear (lb/ft)		Note
			Wind		Seismic		Wind	Seis	
			Horz	Vert	Horz	Vert			
L	EW	5						(h)	
F	SW	G						(j)	
R	EW	6						(h)	
B	SW	A						(j)	

(h) Rigid frame at endwall
(j) Weak axis bending is used

RIGID FRAME REACTIONS: WEAK AXIS BENDING

Frame Line	Col Line	---Reactions(k, f-k)---			Load ID
		Horiz	AB_Vert	Moment	
5*	G	3.0	49.1	40.9	Wind
		0.1	1.5	1.2	Seismic
5*	A	3.0	49.1	40.9	Wind
		0.1	1.5	1.2	Seismic

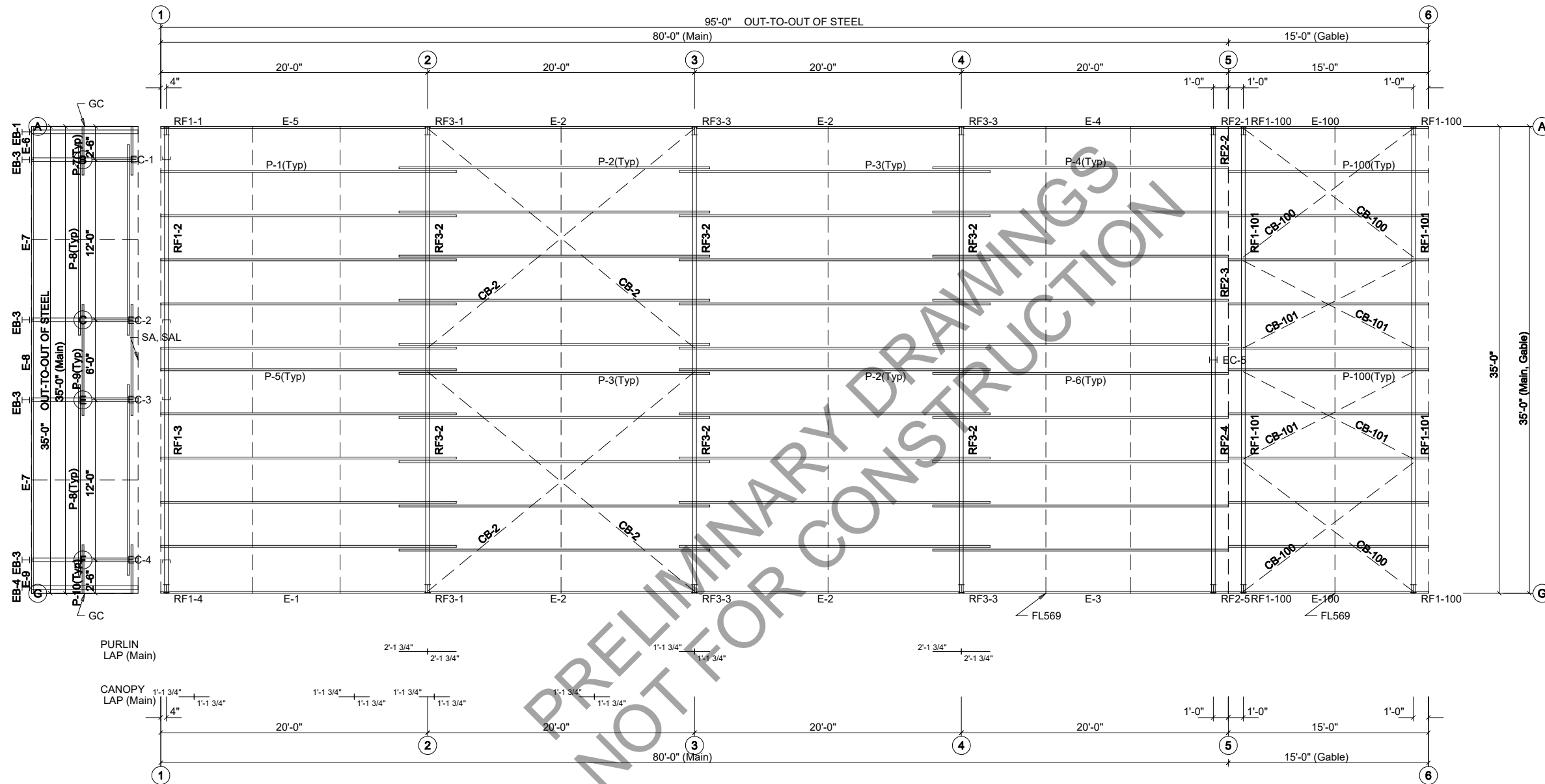
5* Frame lines: 5 6

Reactions for seismic represent shear force, Eh
Reaction values shown are unfactored

PRELIMINARY DRAWINGS
NOT FOR CONSTRUCTION

MEMBER TABLE: FRAME LINE			
QUAN	MARK	PART	LENGTH
1	EB-1	W8X10	8'-4 1/16"
4	EB-3	W8X10	8'-0 1/16"
1	EB-4	W8X10	8'-4 1/16"
5	P-1	8X25Z14	22'-1 1/2"
10	P-2	8X25Z16	23'-3 1/2"
10	P-3	8X25Z16	23'-3 1/2"
5	P-4	8X25Z16	22'-1 1/2"
5	P-5	8X25Z14	22'-1 1/2"
5	P-6	8X25Z16	22'-1 1/2"
2	P-7	8X25Z16	3'-2 1/2"
4	P-8	8X25Z16	14'-3 1/2"
2	P-9	8X25Z16	8'-3 1/2"
2	P-10	8X25Z16	3'-2 1/2"
1	E-1	E085344L	19'-11 1/2"
4	E-2	E085344L	19'-11 1/2"
1	E-3	E085344L	19'-11 1/2"
1	E-4	E085344L	19'-11 1/2"
1	E-5	E085344L	19'-11 1/2"
1	E-6	E085341L	2'-5 1/2"
2	E-7	E085341L	11'-11 1/2"
1	E-8	E085341L	5'-11 1/2"
1	E-9	E085341L	2'-5 1/2"
4	CB-2	HW373	26'-9 1/4"
10	P-100	8X25Z16	14'-11 1/2"
2	E-100	E085344L	14'-11 1/2"
4	CB-100	HW373	15'-11"
4	CB-101	HW373	14'-11 3/4"

ANGLE TABLE: FRAME LINE			
QID	QUAN	MARK	LENGTH
0	1	FL569	500'-0"
0	0	FL569	SCRAP
0	2	SA	20'-0"
0	2	SAL	20'-0"
0	0	GC	SCRAP



ROOF FRAMING PLAN

DRAWING REVISIONS

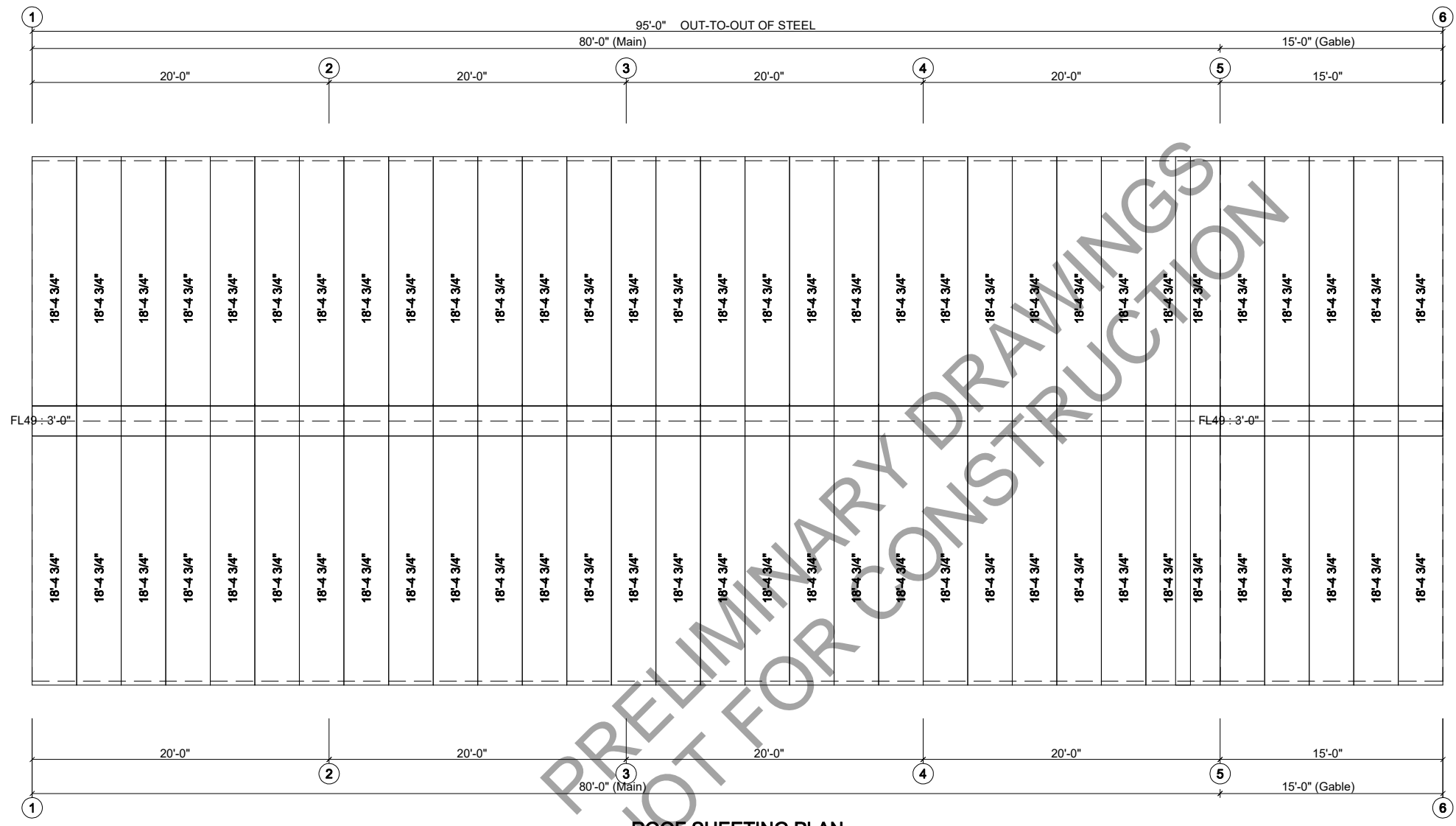
DRAWING USAGE



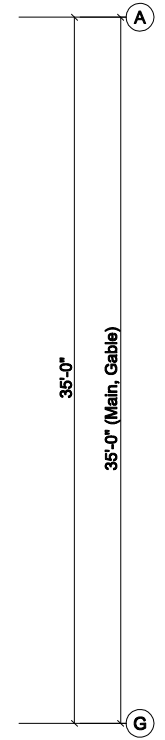
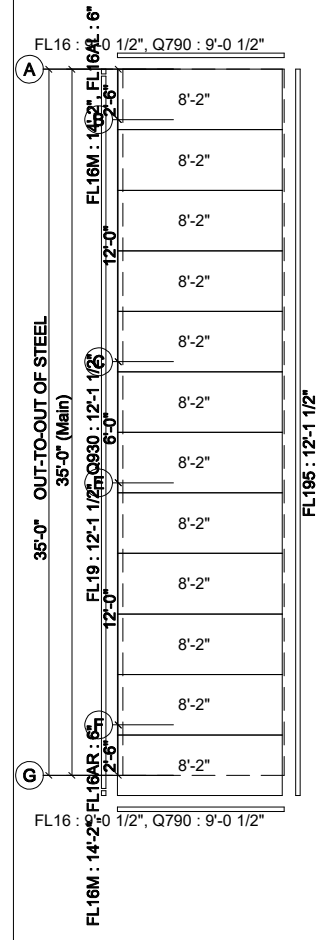
ROOF FRAMING
Rip Stoltz
Slidell, LA 70460

24-SO-0748-Rev1
Rip Stoltz
Slidell, LA 70460

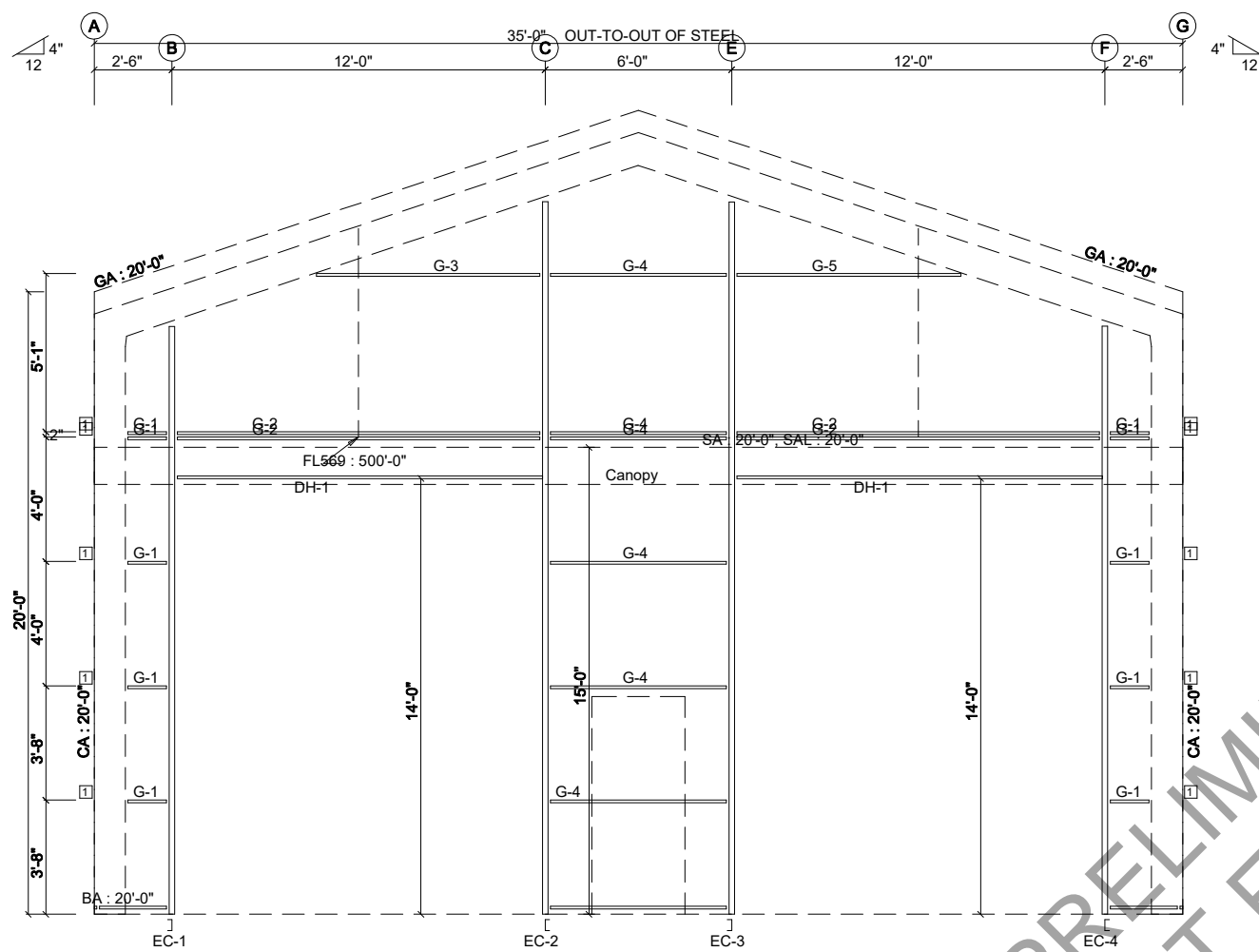
EXTENSION/CANOPY BOLTS				
ROOF PLAN				
MARK	QUAN	TYPE	DIA	LENGTH
EB-1	4	A325	3/4"	1 3/4"
EB-3	4	A325	3/4"	2"
EB-4	4	A325	3/4"	1 3/4"



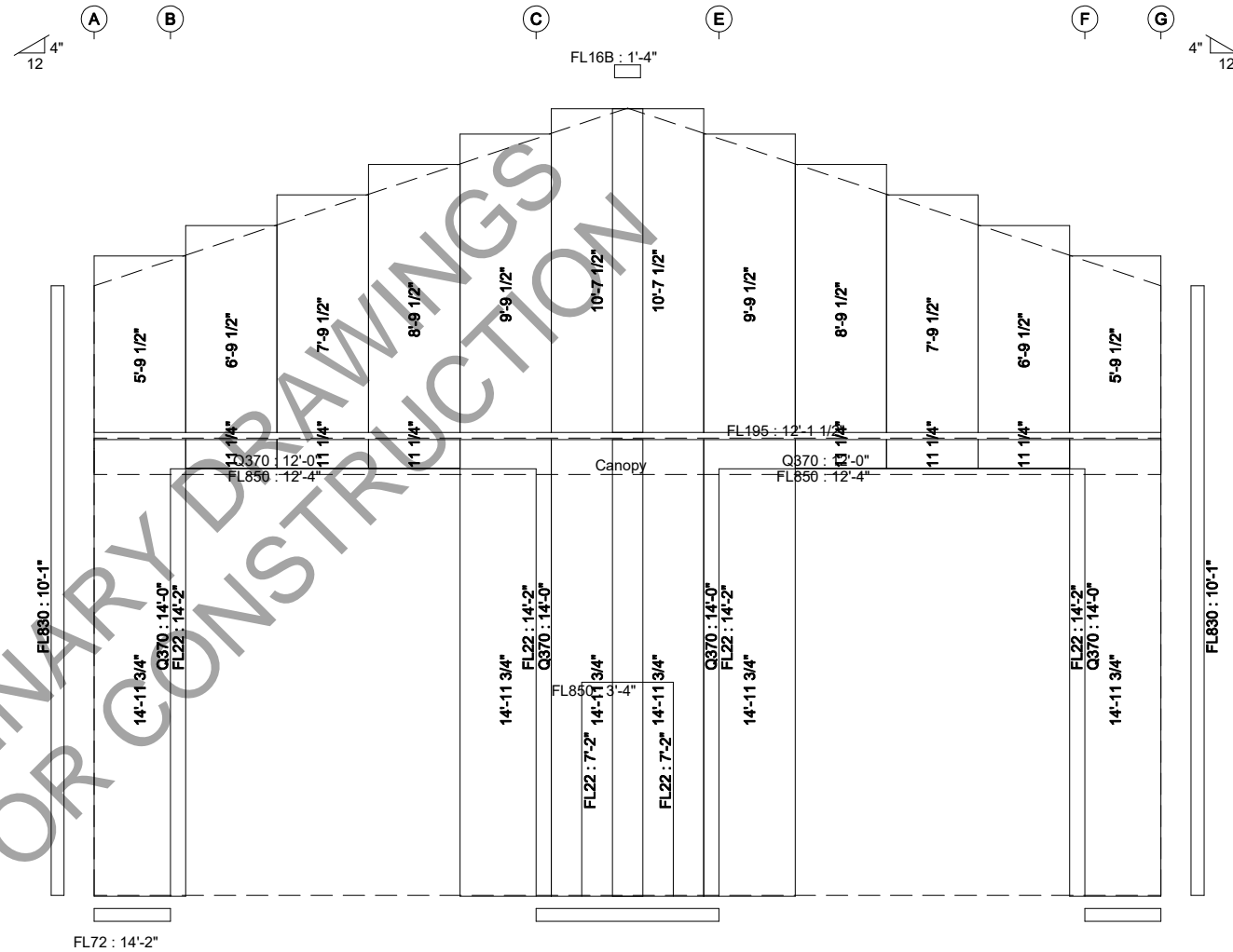
ROOF SHEETING PLAN
PANELS: 26 Ga. PBR



DRAWING REVISIONS	DRAWING USAGE	STEEL OUTDOORS		ROOF SHEETING	24-SO-0748-Rev1	SHEET	
			CUSTOMER	Rip Stoltz	Rip Stoltz		Page 8 of 19
			PROJECT	Slidell, LA 70460	Slidell, LA 70460		



ENDWALL FRAMING: FRAME LINE 1



ENDWALL SHEETING & TRIM: FRAME LINE 1

PANELS: 26 Ga. PBR

MEMBER TABLE: FRAME LINE 1			
QUAN	MARK	PART	LENGTH
1	EC-1	C8x11.5	18'-10 3/4"
1	EC-2	C8x11.5	22'-10 3/4"
1	EC-3	C8x11.5	22'-10 3/4"
1	EC-4	C8x11.5	18'-10 3/4"
2	DH-1	8X25c16	12'-0"
10	G-1	8X25Z16	1'-2 1/2"
4	G-2	8X25Z16	11'-11 1/2"
1	G-3	8X25Z16	7'-0 15/16"
6	G-4	8X25Z16	5'-5 1/2"
1	G-5	8X25Z16	7'-0 15/16"

TRIM TABLE (Trim laps 2" unless noted otherwise)				
QID	QUAN	MARK	LENGTH	DETAIL
0	3	FL195	12'-1 1/2"	TRIM_132
0	1	FL850	3'-4"	TRIM_6
0	1	FL22	7'-2"	TRIM_7
0	1	FL850	12'-4"	TRIM_6
0	1	Q370	12'-0"	TRIM_6
0	1	FL22	14'-2"	TRIM_7
0	1	Q370	14'-0"	TRIM_7
0	2	FL830	10'-1"	TRIM_13
0	0	FL72	SCRAP	TRIM_1
0	1	FL72	14'-2"	TRIM_1
0	1	FL16B	1'-4"	

BOLT TABLE: FRAME LINE 1				
LOCATION	QUAN	TYPE	DIA	LENGTH
Columns/Raf	2	A325	5/8"	1 1/2"

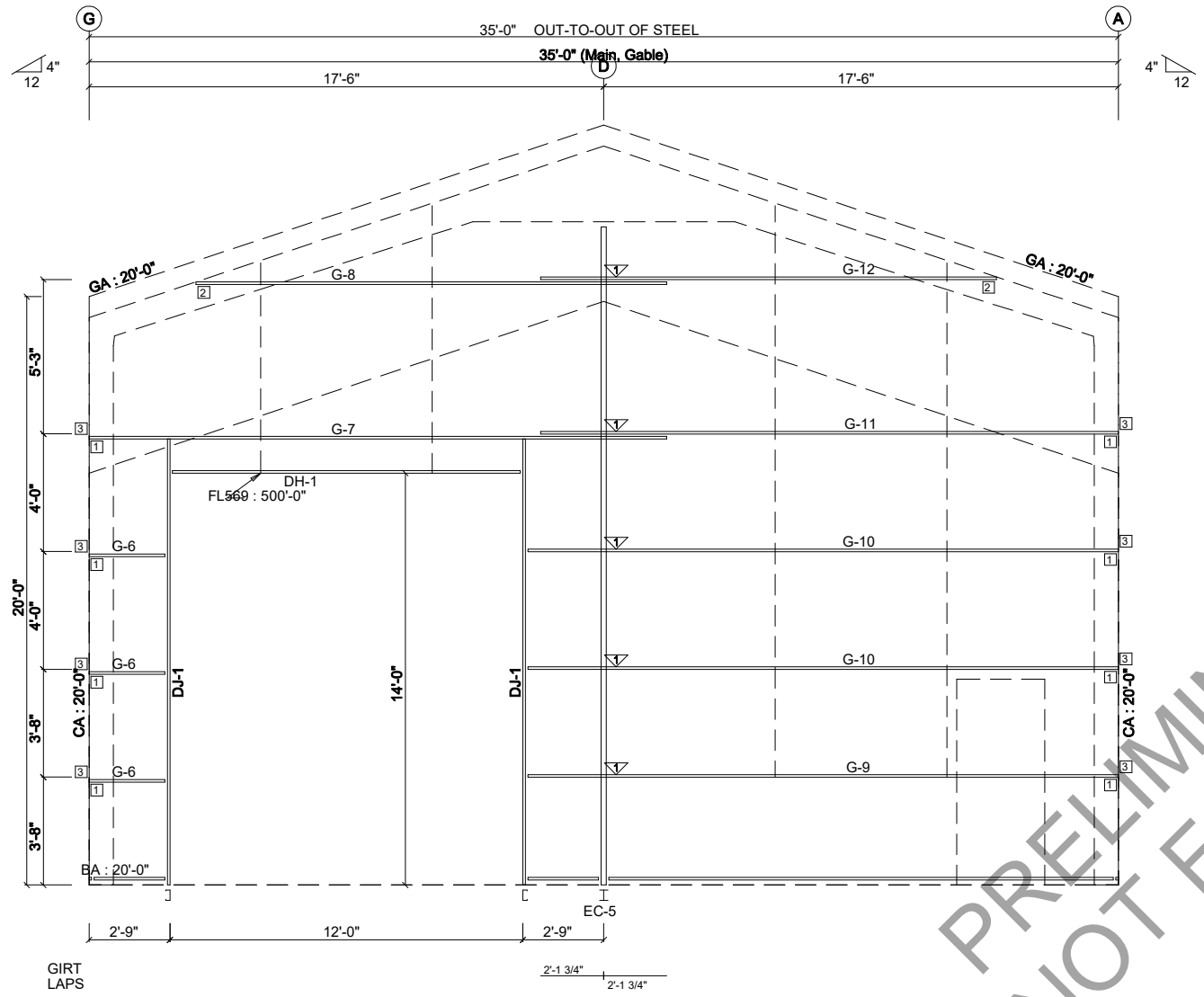
CLIP TABLE: FRAME LINE 1		
QID	QUAN	MARK
1	10	4X25Z16

ANGLE TABLE: FRAME LINE 1			
QID	QUAN	MARK	LENGTH
0		FL569	500'-0"
0		BA	20'-0"
0		GA	20'-0"
0		CA	20'-0"
0		SA	20'-0"
0		SAL	20'-0"

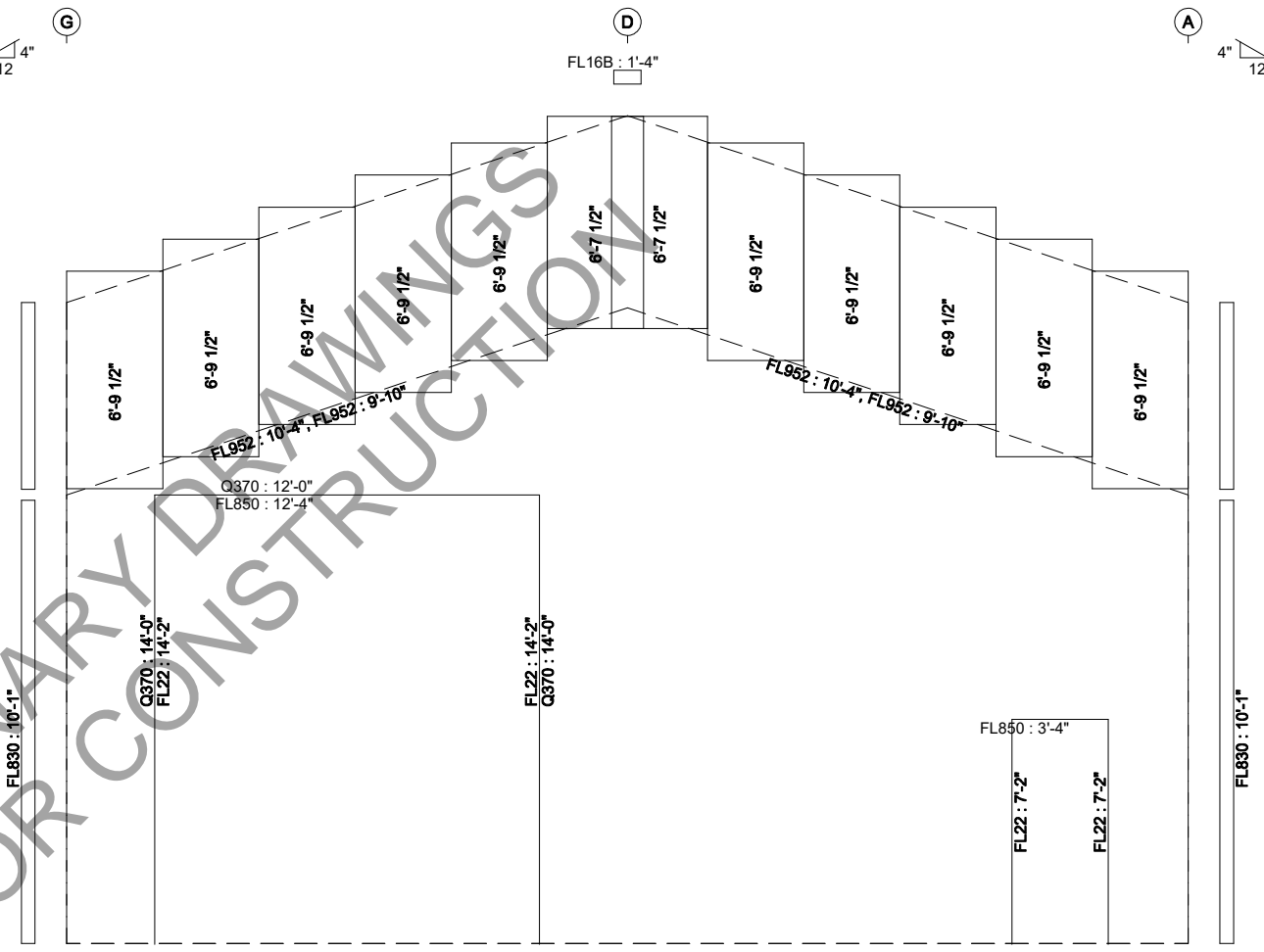
DRAWING REVISIONS	DRAWING USAGE



ENDWALL FRAMING	24-SO-0748-Rev1	SHEET	Page 9 of 19
Rip Stoltz	Rip Stoltz		
Slidell, LA 70460	Slidell, LA 70460		



ENDWALL FRAMING: FRAME LINE 5



ENDWALL SHEETING & TRIM: FRAME LINE 5
PANELS: 26 Ga. PBR

MEMBER TABLE: FRAME LINE 5			
QUAN	MARK	PART	LENGTH
1	EC-5	W8X21	22'-6 1/2"
2	DJ-1	8X35c12	15'-4"
1	DH-1	8X25c16	12'-0"
3	G-6	8X25Z16	2'-5"
1	G-7	8X25Z12	19'-7 1/2"
1	G-8	8X25Z16	15'-9 1/16"
1	G-9	8X25Z16	19'-11"
2	G-10	8X25Z12	19'-11"
1	G-11	8X25Z12	19'-7 1/2"
1	G-12	8X25Z16	15'-9 1/16"

TRIM TABLE (Trim laps 2" unless noted otherwise)				
QID	QUAN	MARK	LENGTH	DETAIL
0	2	FL952	9'-10"	TRIM_135
0	2	FL952	10'-4"	TRIM_135
0	1	FL850	3'-4"	TRIM_6
0	1	FL22	7'-2"	TRIM_7
0	1	FL850	12'-4"	TRIM_6
0	1	Q370	12'-0"	TRIM_6
0	1	FL22	14'-2"	TRIM_7
0	1	Q370	14'-0"	TRIM_7
0	2	FL830	10'-1"	TRIM_13
0	1	FL16B	1'-4"	

BOLT TABLE: FRAME LINE 5				
LOCATION	QUAN	TYPE	DIA	LENGTH
Columns/Raf	4	A325	3/4"	1 3/4"
Columns/Raf	4	A325	3/4"	1 3/4"

CLIP TABLE: FRAME LINE 5			
QID	QUAN	MARK	
1	8	r1	
2	2	GG11	
3	8	4X25Z16	

ANGLE TABLE: FRAME LINE 5			
QID	QUAN	MARK	LENGTH
0	0	FL569	SCRAP
0		BA	20'-0"
0		GA	20'-0"
0		CA	20'-0"

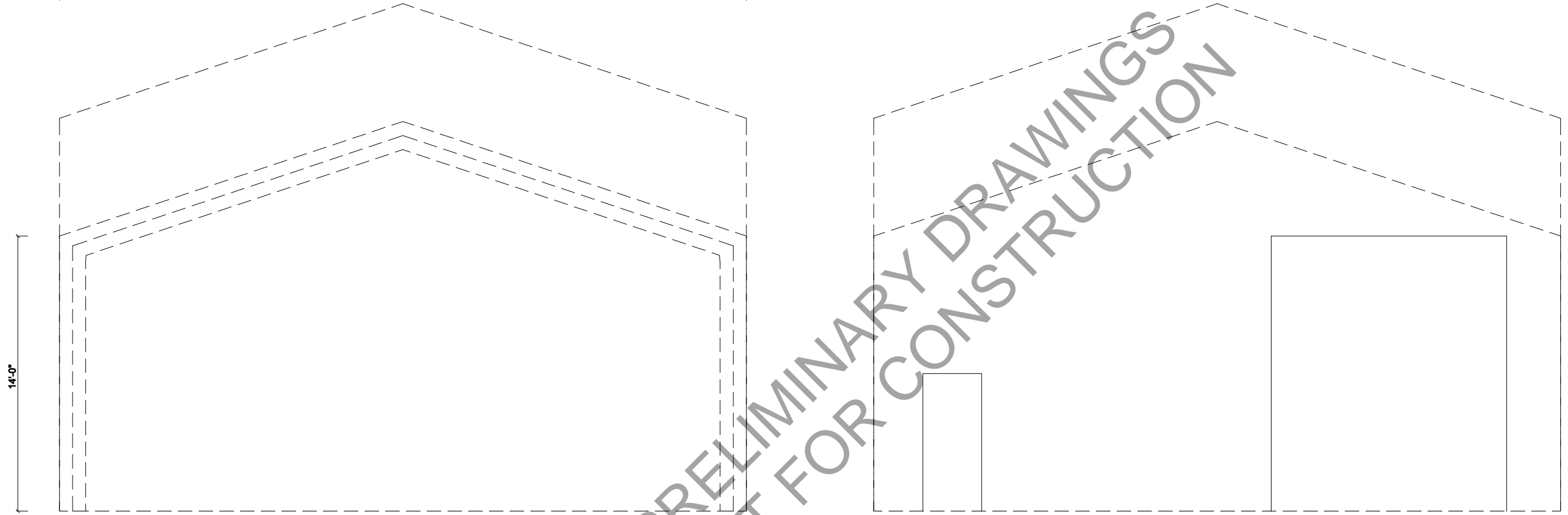
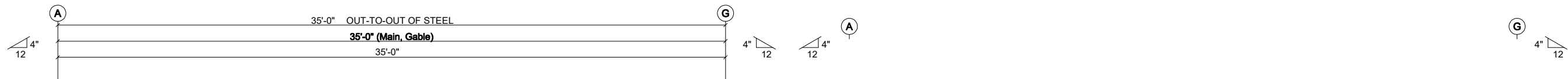
FLANGE BRACE TABLE: FRAME LINE 5			
QID	QUAN	MARK	LENGTH
1	1	FB29.3	2'-5 1/4"

PRELIMINARY DRAWINGS
NOT FOR CONSTRUCTION

DRAWING REVISIONS	DRAWING USAGE



ENDWALL FRAMING		24-SO-0748-Rev1		SHEET
Rip Stoltz		Rip Stoltz		
Slidell, LA 70460		Slidell, LA 70460		



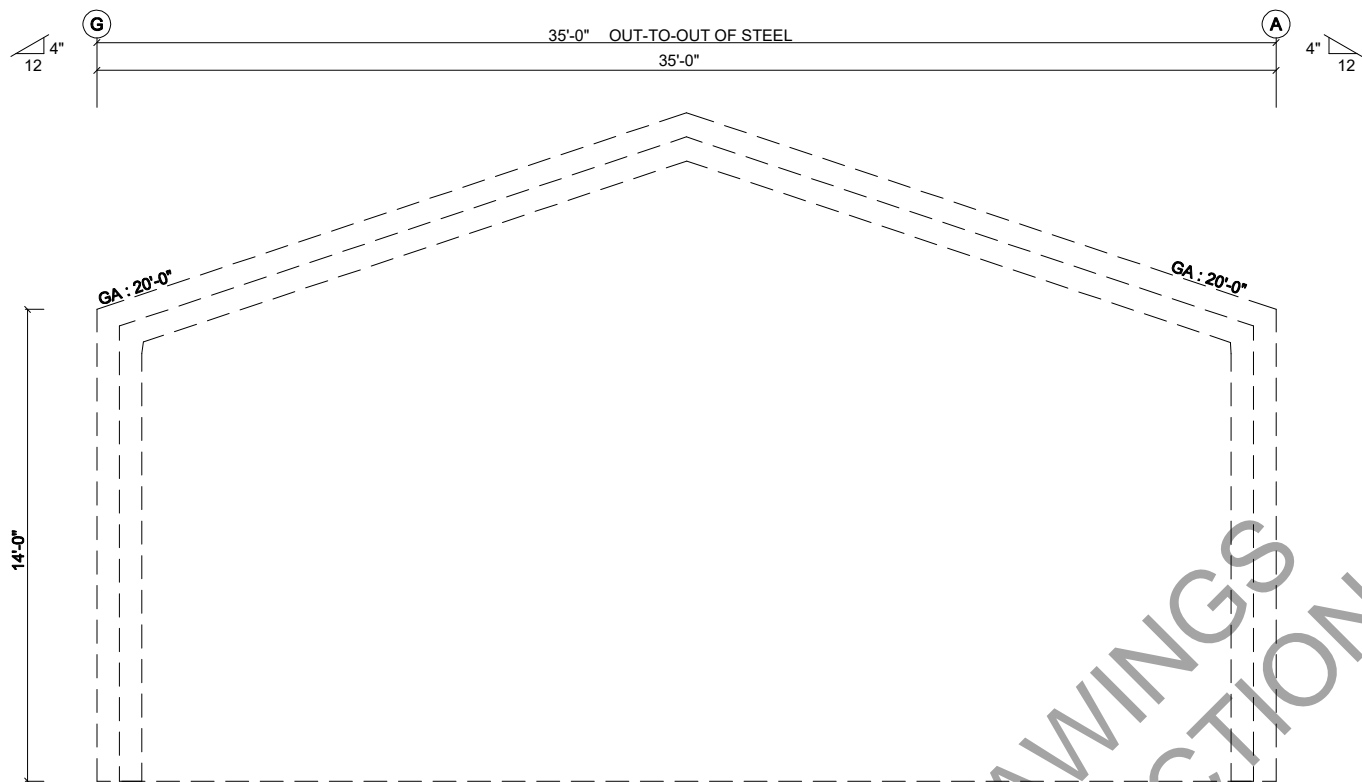
ENDWALL FRAMING: FRAME LINE 5

ENDWALL SHEETING & TRIM: FRAME LINE 5

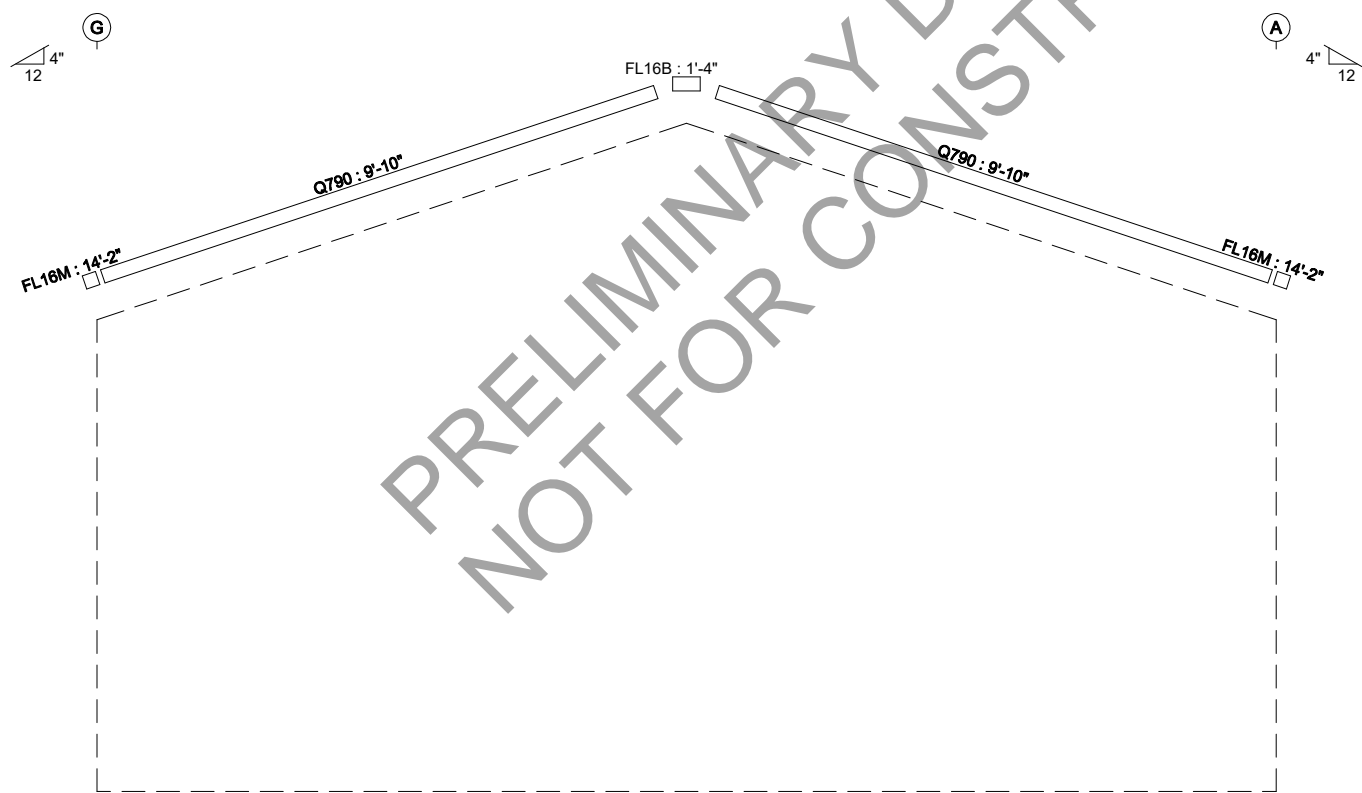
DRAWING REVISIONS	DRAWING USAGE



ENDWALL FRAMING		24-SO-0748-Rev1	
CUSTOMER	Rip Stoltz	PROJECT	Rip Stoltz
	Slidell, LA 70460		Slidell, LA 70460



ENDWALL FRAMING: FRAME LINE 6



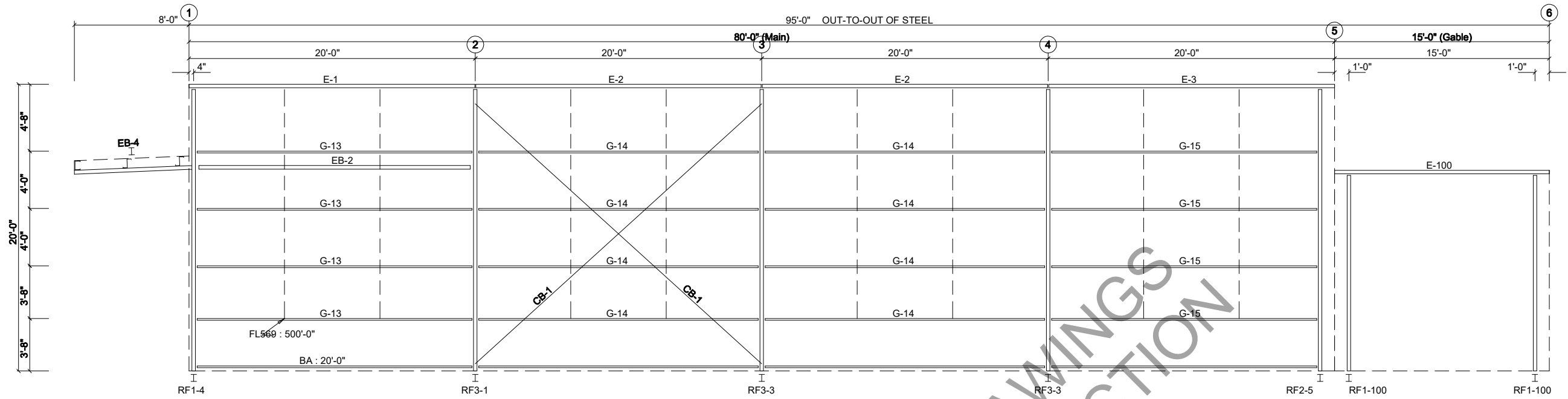
ENDWALL SHEETING & TRIM: FRAME LINE 6

TRIM TABLE (Trim laps 2" unless noted otherwise)				
ID	QUAN	MARK	LENGTH	DETAIL
0	2	Q790	9'-10"	
0	1	FL16M	14'-2"	
0	1	FL16B	1'-4"	

ANGLE TABLE: FRAME LINE 6			
ID	QUAN	MARK	LENGTH
0		GA	20'-0"

PRELIMINARY DRAWINGS
NOT FOR CONSTRUCTION

DRAWING REVISIONS	DRAWING USAGE		ENDWALL FRAMING	24-SO-0748-Rev1	SHEET
			Rip Stoltz	Rip Stoltz	
			Slidell, LA 70460	Slidell, LA 70460	



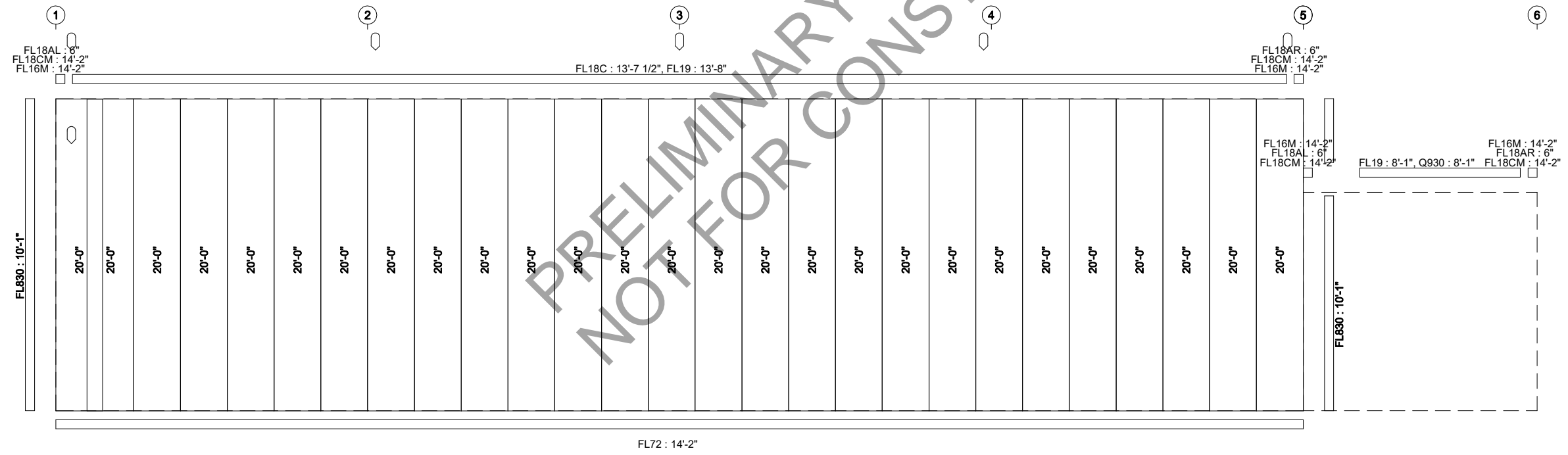
SIDEWALL FRAMING: FRAME LINE G

MEMBER TABLE: FRAME LINE G			
QUAN	MARK	PART	LENGTH
1	EB-2	W8X10	19'-7 3/4"
1	EB-4	W8X10	8'-4 1/16"
1	E-1	E085344L	19'-11 1/2"
2	E-2	E085344L	19'-11 1/2"
1	E-3	E085344L	19'-11 1/2"
4	G-13	8X35Z12	19'-3"
8	G-14	8X35Z12	19'-7"
4	G-15	8X35Z12	18'-7"
2	CB-1	HW374	27'-8 1/2"
1	E-100	E085344L	14'-11 1/2"

TRIM TABLE (Trim laps 2" unless noted otherwise)				
QID	QUAN	MARK	LENGTH	DETAIL
0	6	FL19	13'-8"	
0	4	FL18C	13'-7 1/2"	TRIM_101
0	2	FL830	10'-1"	TRIM_13
0	6	FL72	14'-2"	TRIM_1
0	1	FL18CM	14'-2"	
0	1	FL18AL	6"	
0	1	FL18AR	6"	
0	1	FL16M	14'-2"	
0	2	FL19	8'-1"	
0	2	Q930	8'-1"	

BOLT TABLE: FRAME LINE G				
LOCATION	QUAN	TYPE	DIA	LENGTH
EB-2 (L)	4	A325	3/4"	1 3/4"
EB-2 (R)	4	A325	5/8"	
EB-2 (L)	4	A325	3/4"	1 3/4"
EB-2 (R)	4	A325	5/8"	

ANGLE TABLE: FRAME LINE G			
QID	QUAN	MARK	LENGTH
0		BA	20'-0"
0	0	FL569	SCRAP



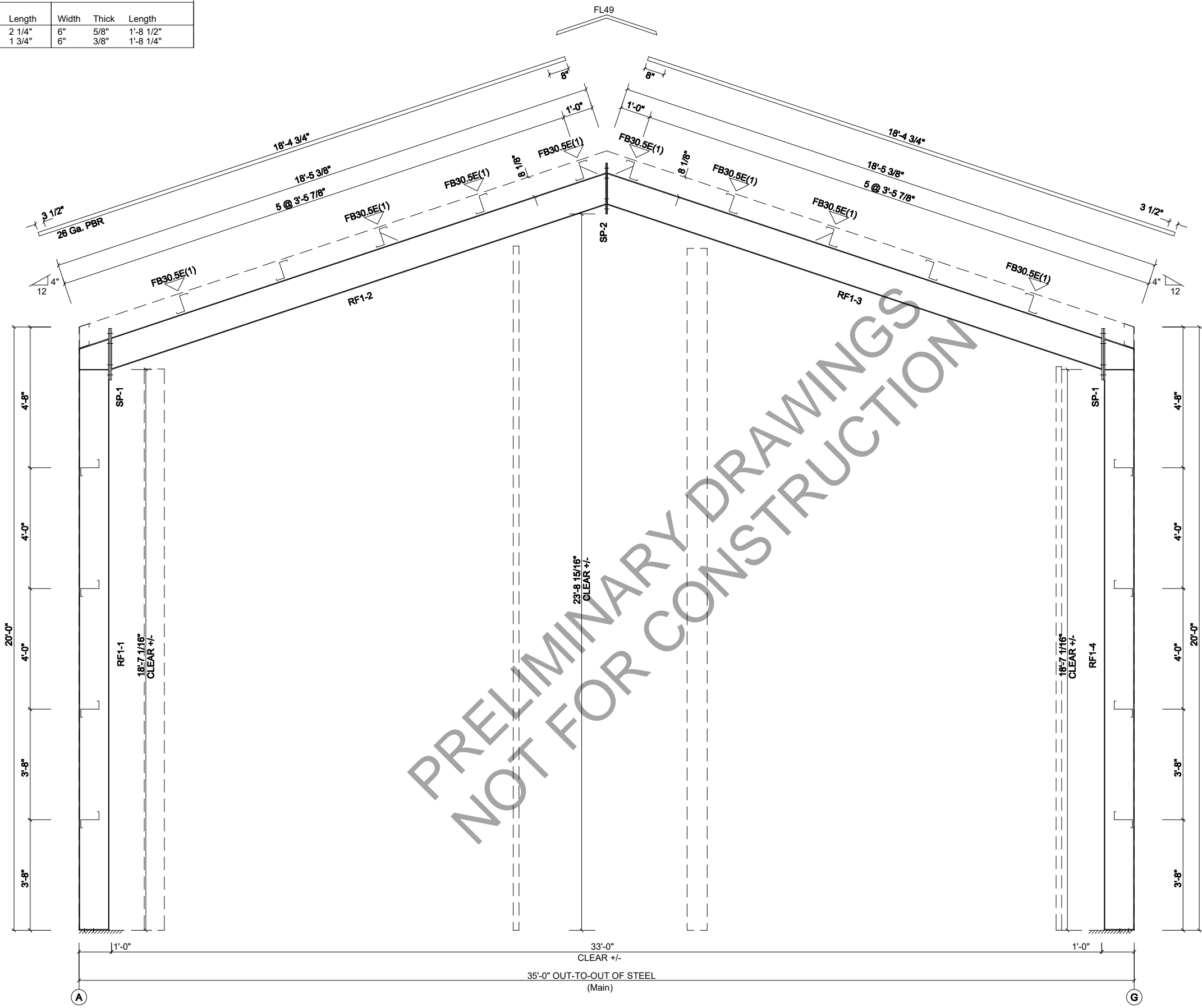
SIDEWALL SHEETING & TRIM: FRAME LINE G
PANELS: 26 Ga. PBR

<p>DRAWING REVISIONS</p>	<p>DRAWING USAGE</p>		<p>SIDEWALL FRAMING</p> <p>Rip Stoltz</p> <p>Slidell, LA 70460</p>	<p>24-SO-0748-Rev1</p> <p>Rip Stoltz</p> <p>Slidell, LA 70460</p>	<p>Page 13 of 19</p>
--------------------------	----------------------	---	--	---	----------------------

SPLICE PLATE & BOLT TABLE									
Mark	Qty		Int	Type	Dia	Length	Width	Thick	Length
	Top	Bot							
SP-1	4	4	0	A325	3/4"	2 1/4"	6"	5/8"	1'-8 1/2"
SP-2	4	4	0	A325	3/4"	1 3/4"	6"	3/8"	1'-8 1/4"

MEMBER SIZE TABLE			
MARK	MEMBER	LENGTH	WEIGHT
RF1-1	W12X16	19'-3 7/16"	358
RF1-2	W12X16	17'-4 5/16"	335
RF1-3	W12X16	17'-4 5/16"	335
RF1-4	W12X16	19'-3 7/16"	358

▽ FLANGE BRACES: Both Sides(U.N.)
 FBxxE(1); xx=length(in)
 E - L2X2X1/8



PRELIMINARY DRAWINGS
 NOT FOR CONSTRUCTION

RIGID FRAME ELEVATION: FRAME LINE 1

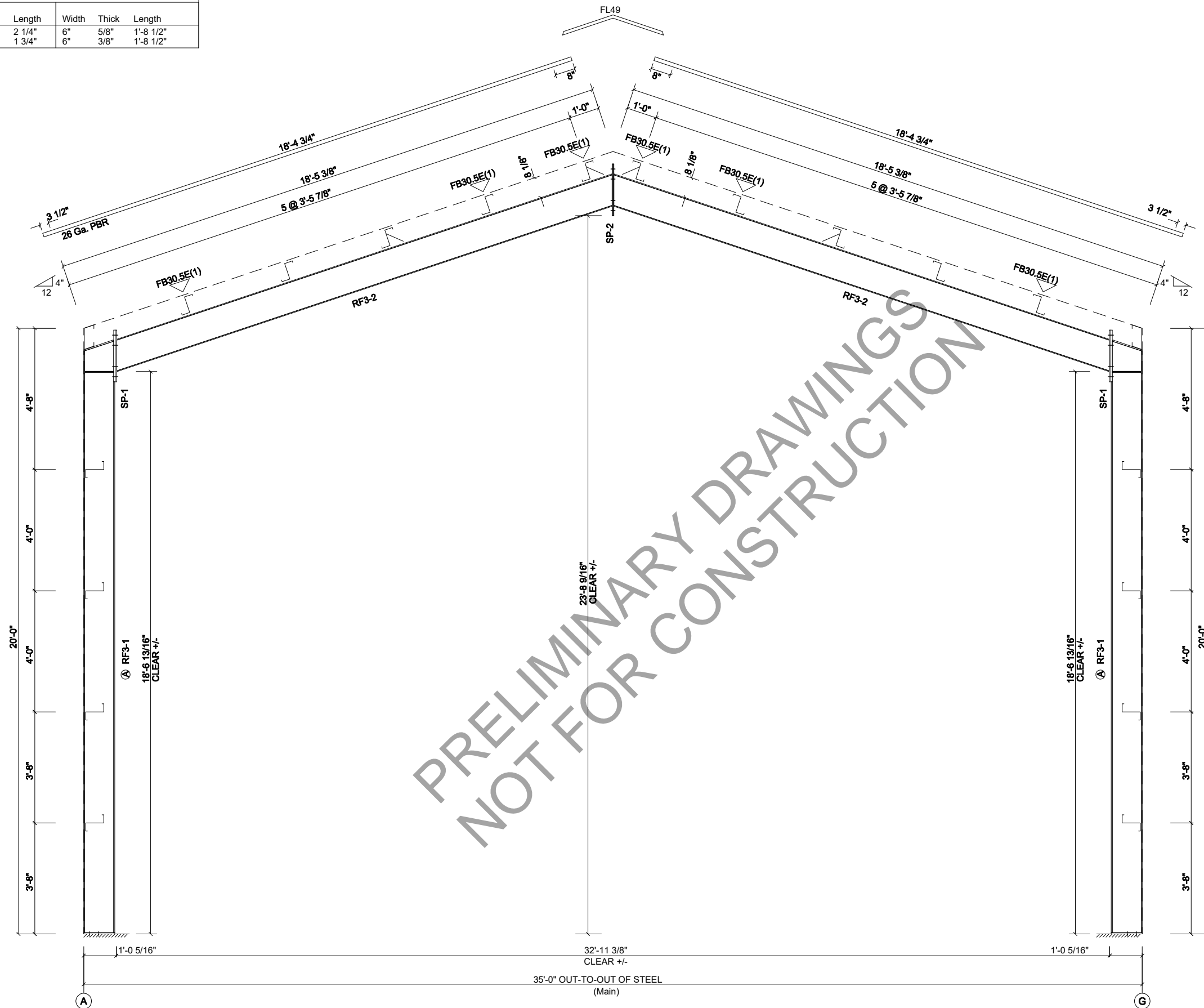
DRAWING REVISIONS	DRAWING USAGE		RIGID FRAME ELEVATION	24-SO-0748-Rev1	Page 15 of 19		
			CUSTOMER	Rip Stoltz		PROJECT	Rip Stoltz
			Slidell, LA 70460	Slidell, LA 70460			

SPLICE PLATE & BOLT TABLE									
Mark	Qty		Int	Type	Dia	Length	Width	Thick	Length
	Top	Bot							
SP-1	4	4	0	A325	3/4"	2 1/4"	6"	5/8"	1'-8 1/2"
SP-2	4	4	0	A325	3/4"	1 3/4"	6"	3/8"	1'-8 1/2"

ALTERNATE MEMBER		
Frame Line	OID	Mark
3	A	RF3-3
4	A	RF3-3

▽ FLANGE BRACES: Both Sides(U.N.)
 FBxxE(1); xx=length(in)
 E - L2X2X1/8

MEMBER SIZE TABLE			
MARK	MEMBER	LENGTH	WEIGHT
RF3-1	W12X22	19'-3 7/16"	481
RF3-2	W12X19	17'-4 3/16"	379



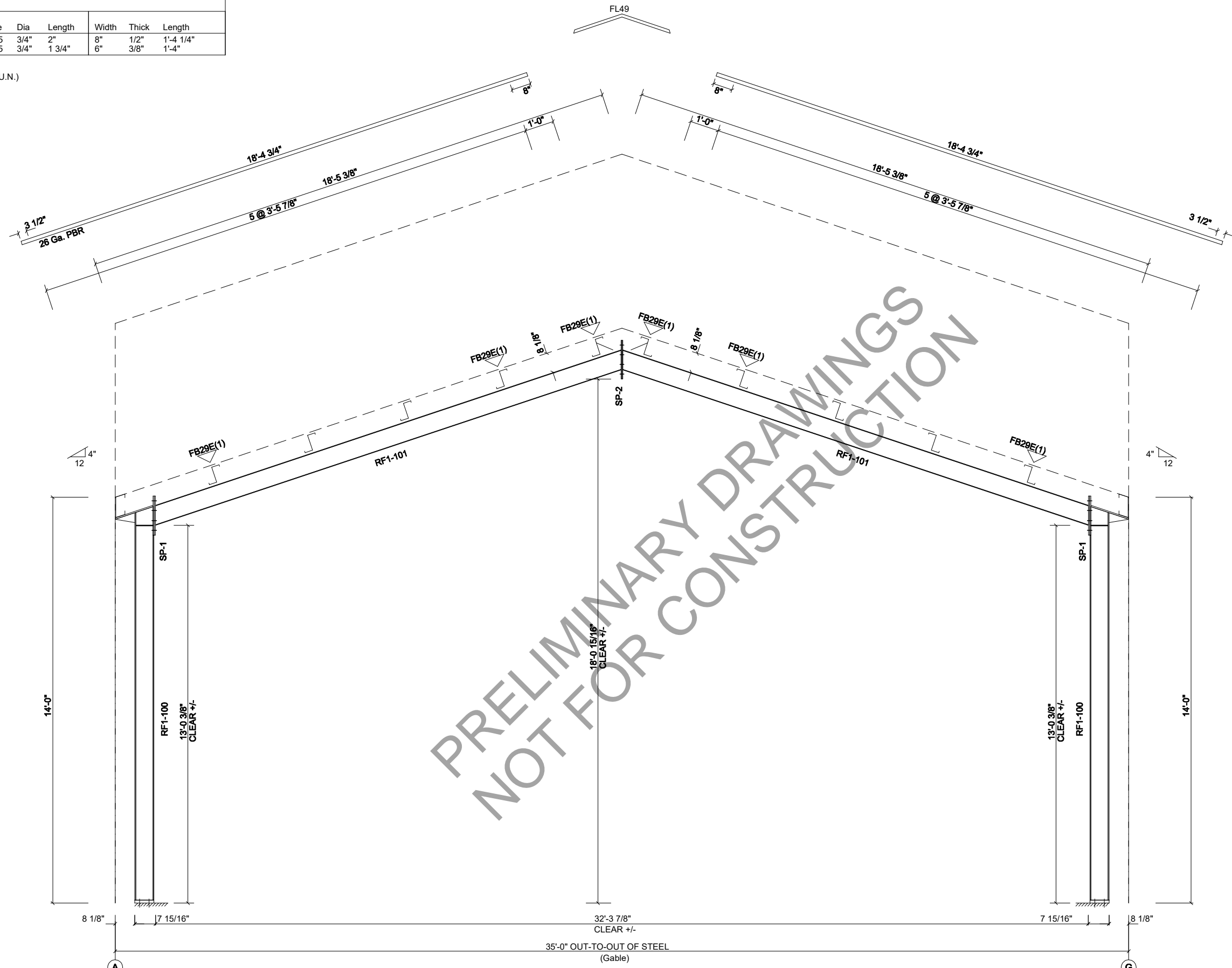
RIGID FRAME ELEVATION: FRAME LINE 2 3 4

DRAWING REVISIONS	DRAWING USAGE		RIGID FRAME ELEVATION	24-SO-0748-Rev1	Page 16 of 19 SHEET		
			CUSTOMER	Rip Stoltz		PROJECT	Rip Stoltz
			Slidell, LA 70460	Slidell, LA 70460			

SPLICE PLATE & BOLT TABLE									
Mark	Qty		Int	Type	Dia	Length	Width	Thick	Length
	Top	Bot							
SP-1	4	4	0	A325	3/4"	2"	8"	1/2"	1'-4 1/4"
SP-2	4	4	0	A325	3/4"	1 3/4"	6"	3/8"	1'-4"

MEMBER SIZE TABLE			
MARK	MEMBER	LENGTH	WEIGHT
RF1-100	W8X24	13'-6 1/8"	397
RF1-101	W8X10	17'-0 5/16"	214

FLANGE BRACES: Both Sides(U.N.)
 FBxxE(1); xx=length(in)
 E - L2X2X1/8



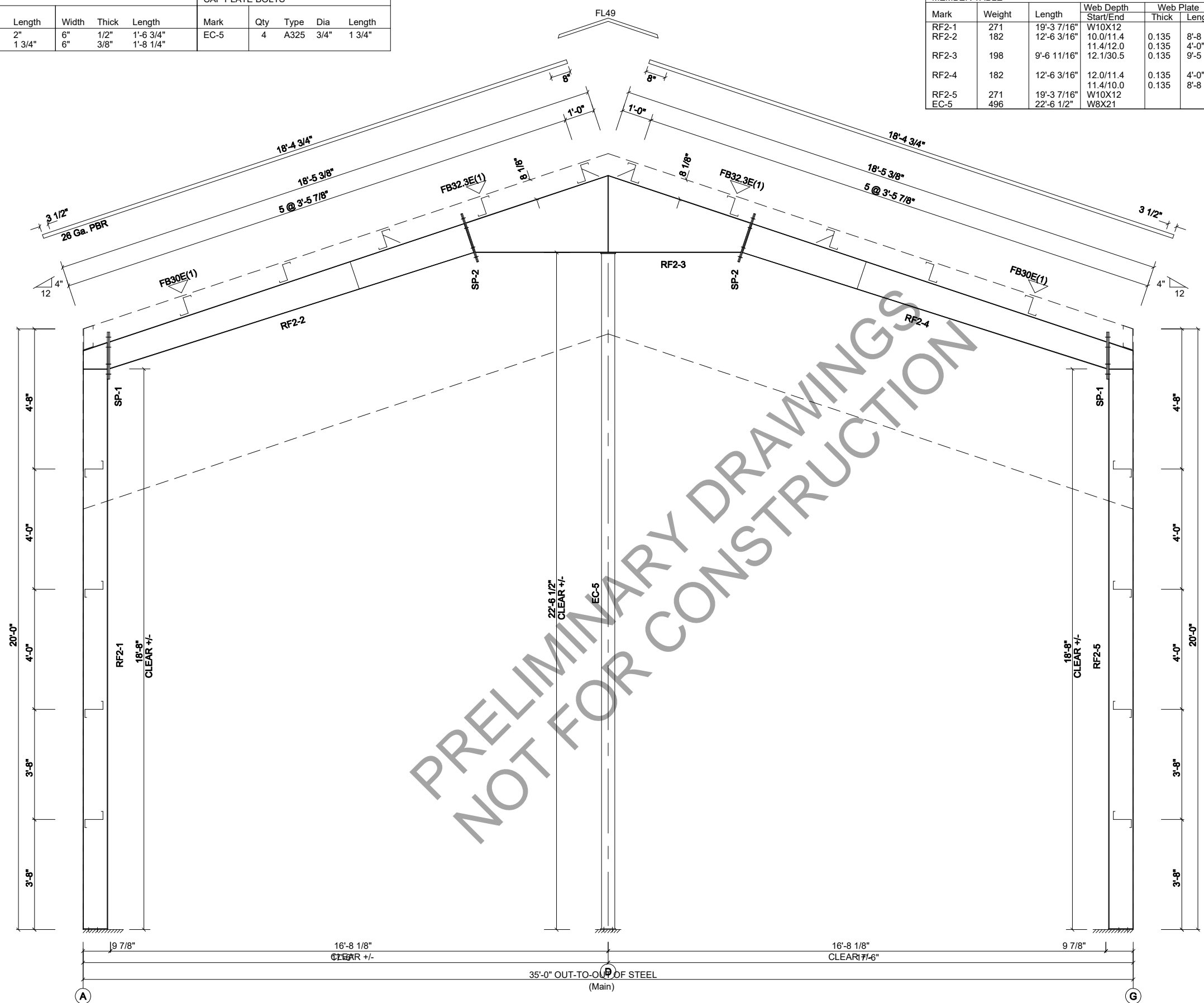
RIGID FRAME ELEVATION: FRAME LINE 5

DRAWING REVISIONS	DRAWING USAGE		RIGID FRAME ELEVATION	24-SO-0748-Rev1	Page 17 of 19 SHEET		
			CUSTOMER	Rip Stoltz		PROJECT	Rip Stoltz
			Slidell, LA 70460	Slidell, LA 70460			

SPLICE PLATE & BOLT TABLE										CAP PLATE BOLTS				
Mark	Qty Top	Qty Bot	Int	Type	Dia	Length	Width	Thick	Length	Mark	Qty	Type	Dia	Length
SP-1	4	4	0	A325	3/4"	2"	6"	1/2"	1'-6 3/4"	EC-5	4	A325	3/4"	1 3/4"
SP-2	4	4	0	A325	3/4"	1 3/4"	6"	3/8"	1'-8 1/4"					

MEMBER TABLE									
Mark	Weight	Length	Web Depth Start/End	Web Plate Thick	Web Plate Length	Outside Flange Thk x W x Length	Inside Flange Thk x W x Length		
RF2-1	271	19'-3 7/16"	W10X12						
RF2-2	182	12'-6 3/16"	10.0/11.4	0.135	8'-8 11/16"	3/16" x 5 x 12'-5 5/16"	3/16" x 5 x 12'-8 3/4"		
RF2-3	198	9'-6 11/16"	11.4/12.0	0.135	4'-0"	3/16" x 5 x 5'-0"	3/16" x 5 x 8'-10 1/16"		
RF2-4	182	12'-6 3/16"	12.0/11.4	0.135	4'-0"	3/16" x 5 x 5'-0"	3/16" x 5 x 12'-5 5/16"		
RF2-5	271	19'-3 7/16"	11.4/10.0	0.135	8'-8 11/16"				
EC-5	496	22'-6 1/2"	W10X12						

▽ FLANGE BRACES: Both Sides(U.N.)
 FBxxE(1); xx=length(in)
 E - L2X2X1/8



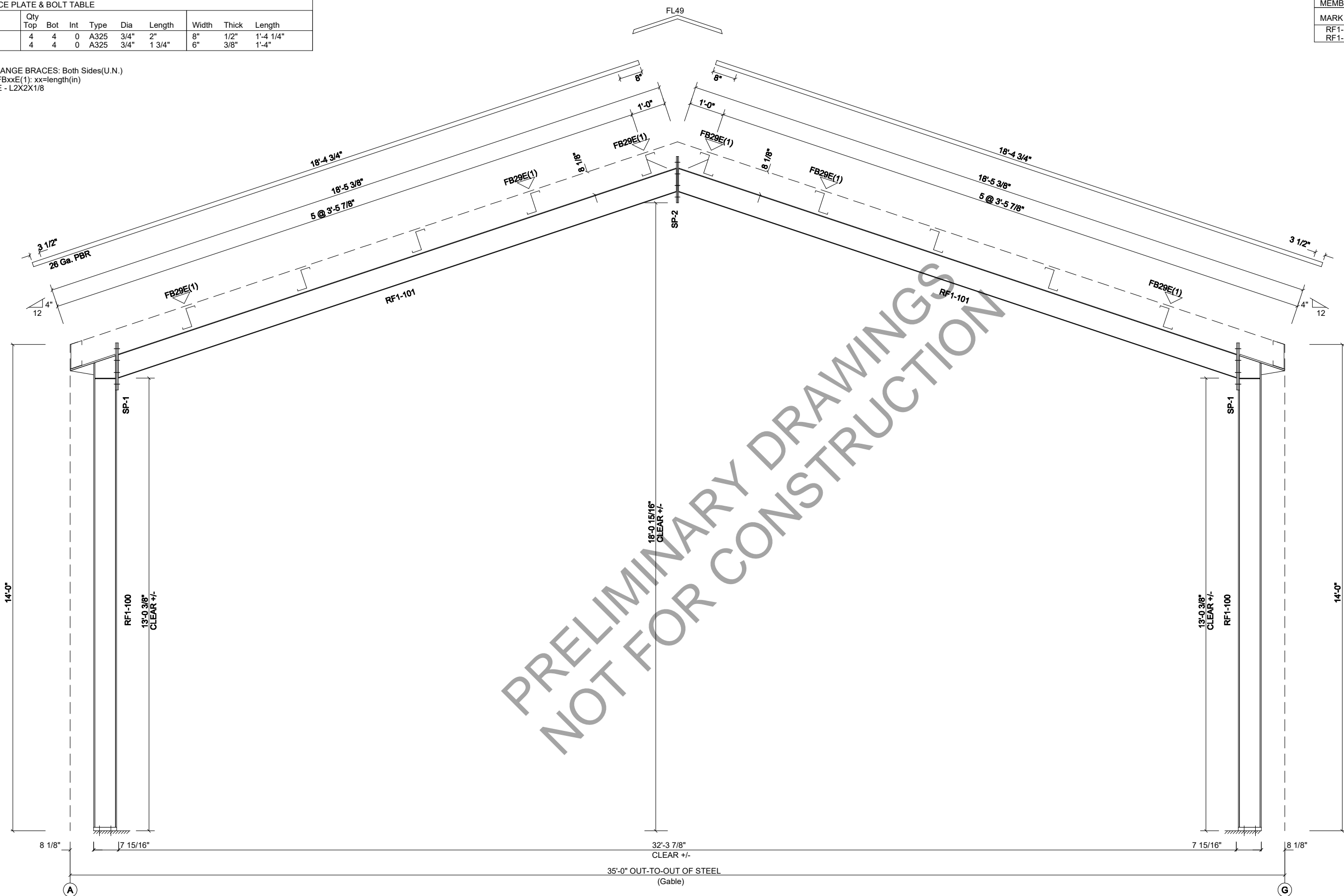
RIGID FRAME ELEVATION: FRAME LINE 5

DRAWING REVISIONS	DRAWING USAGE		RIGID FRAME ELEVATION	24-SO-0748-Rev1	SHEET
			CUSTOMER	PROJECT	
			Rip Stoltz	Rip Stoltz	
			Slidell, LA 70460	Slidell, LA 70460	

SPLICE PLATE & BOLT TABLE									
Mark	Qty		Int	Type	Dia	Length	Width	Thick	Length
	Top	Bot							
SP-1	4	4	0	A325	3/4"	2"	8"	1/2"	1'-4 1/4"
SP-2	4	4	0	A325	3/4"	1 3/4"	6"	3/8"	1'-4"

MEMBER SIZE TABLE			
MARK	MEMBER	LENGTH	WEIGHT
RF1-100	W8X24	13'-6 1/8"	397
RF1-101	W8X10	17'-0 5/16"	214

▽ FLANGE BRACES: Both Sides(U.N.)
 FBxxE(1); xx=length(in)
 E - L2X2X1/8



PRELIMINARY DRAWINGS
NOT FOR CONSTRUCTION

RIGID FRAME ELEVATION: FRAME LINE 6

DRAWING REVISIONS	DRAWING USAGE		RIGID FRAME ELEVATION	24-SO-0748-Rev1	Page 19 of 19		
			CUSTOMER	Rip Stoltz		PROJECT	Rip Stoltz
			Slidell, LA 70460	Slidell, LA 70460			