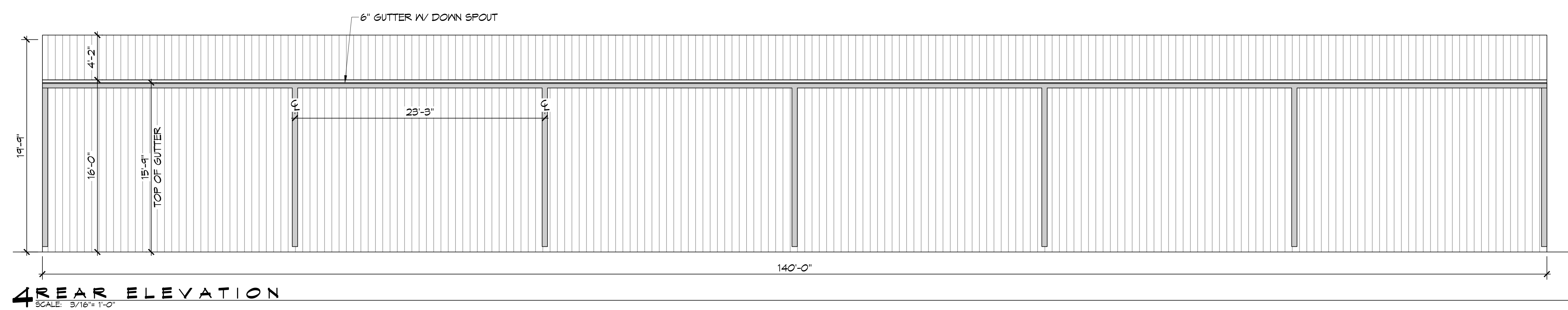
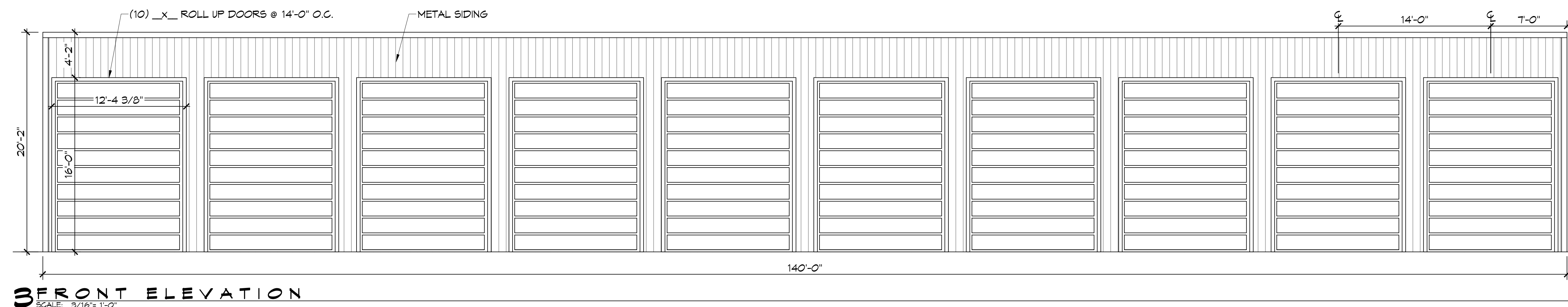
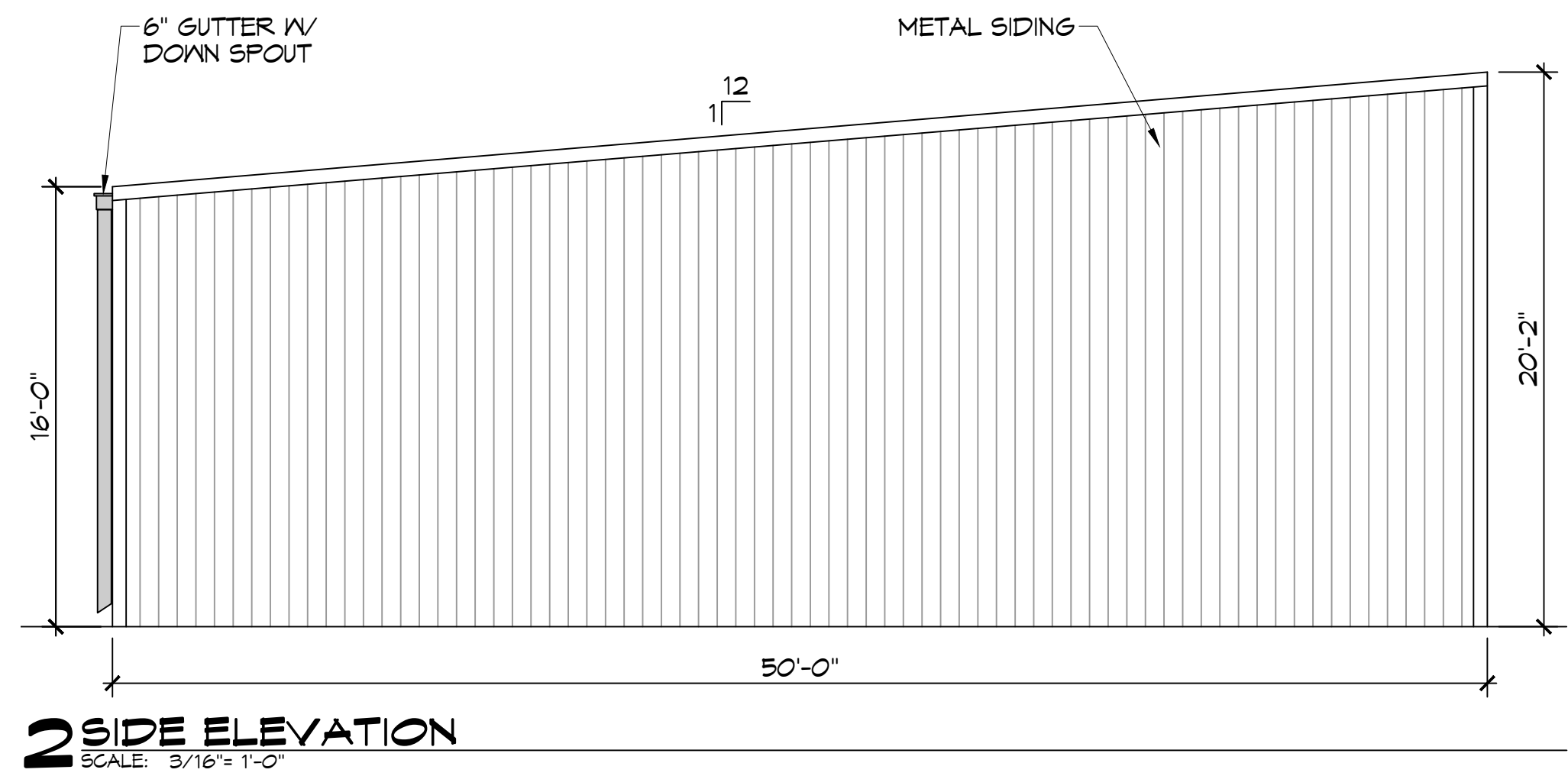
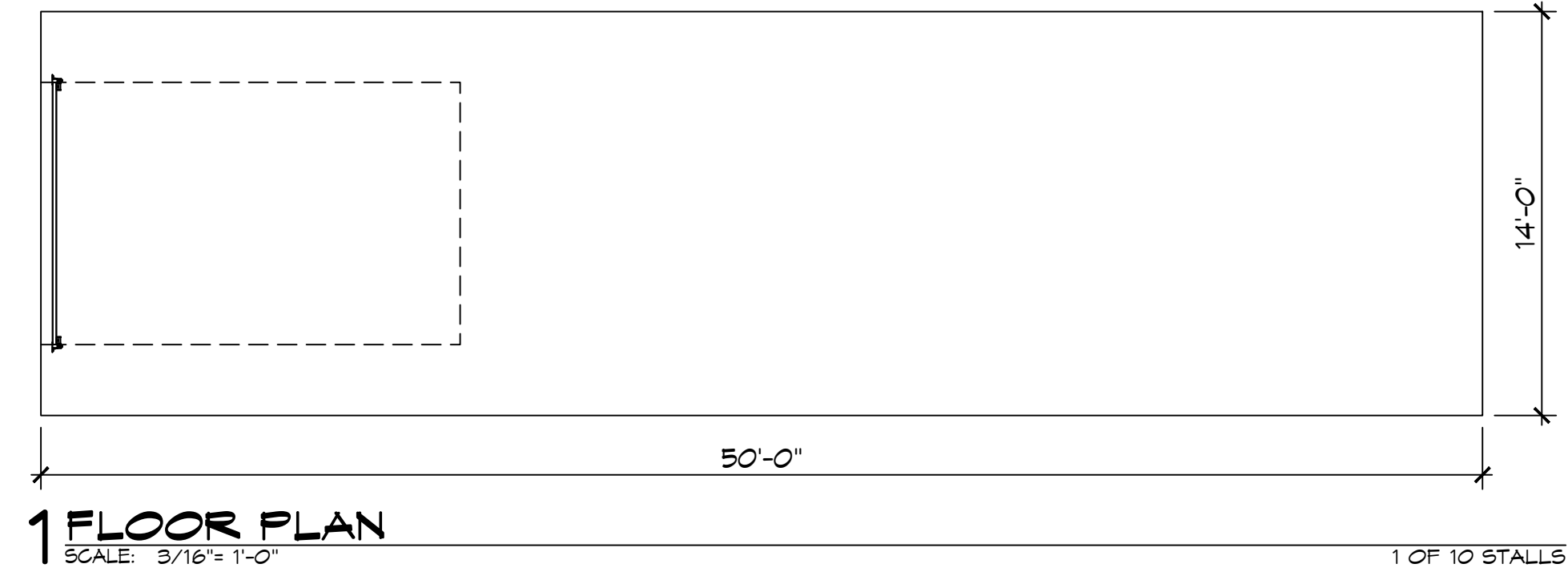


E:\WP\A1 - New Warehouse\A1 - Warehouse - Rev. 07/20/22\A1 - Warehouse - Rev. 07/20/22.dwg - Plot & Publish: Rev. 07/20/22 - 07/20/22 2:13:32 PM



GENERAL NOTES

1. INSULATION AND INSULATION ASSEMBLIES SHALL MEET THE REQUIREMENTS OF IBC 2012 SECTION T19.
 - A. CONCEALED INSULATION SHALL HAVE A FLAME SPREAD OF 0-25 AND SMOKE DEVELOPED INDEX OF 0-450, EXCEPT THAT IN COMBUSTIBLE (WOOD FRAME) CONSTRUCTION.
 - B. FACING SHALL COMPLY WITH IBC 2012.
2. ALL MATERIALS SHALL BE NEW AND UL LISTED.
3. NO WORK SHALL BE CONCEALED UNTIL APPROVED BY LOCAL INSPECTORS.
4. CONSTRUCTION SHALL COMPLY WITH ALL PARISH, STATE, AND LOCAL CODES.
5. CONTRACTOR TO GUARANTEE WORK FOR ONE YEAR FROM DATE OF SUBSTANTIAL COMPLETION.
6. CONTRACTOR SHALL FURNISH WATER AND POWER FROM EXISTING SOURCES.
7. EXTERIOR CAULKING SHALL BE THIKOKAL CAULK.
8. PAINT SHALL BE SHERWIN WILLIAMS OR EQUIVALENT AND APPROPRIATE FOR THE SUBSTRATE TO WHICH IT IS APPLIED AS RECOMMENDED BY PAINT MANUFACTURER. ALL WORK TO RECEIVE THREE COATS (ONE PRIMER COAT, TWO FINISH COATS) UNLESS OTHERWISE RECOMMENDED BY PAINT MANUFACTURER. COLORS TO BE SELECTED BY OWNER.
9. PROVIDE CLEANUP ON A REGULAR BASIS. NO TRASH SHALL BE STORED INSIDE BUILDING PREMISES.
10. ALL BATT INSULATION SHALL HAVE A CLASS "A" (0-25) FLAME SPREAD IN COMPLIANCE WITH IBC 2012.
11. USE 2x6 STUDS, OR TWO 2x4 STAGGERED STUDS WITH 2x6 SILL PLATE AT ALL WALLS WHERE 4" PIPE IS INDICATED. SEE PLUMBING RISER DIAGRAM FOR PIPE SIZE.
12. PROVIDE GALVANIZED METAL PAN WITH DRAIN AT ALL WATER HEATERS.
13. ALL FLOORING SHALL MEET OR EXCEED ADA GUIDELINES REQUIREMENTS FOR SLIP RESISTANCE.
14. INTERIOR LOCKS ON DOORS IN MEANS OF EGRESS SHALL NOT REQUIRE THE USE OF A KEY, SPECIAL KNOWLEDGE, OR SPECIAL DEVICE TO OPEN IN THE DIRECTION OF EGRESS. ALL DOORS SHALL HAVE LEVER TYPE HANDLES.
15. INTERIOR WALLS AND CEILINGS SHALL HAVE A FLAME SPREAD OF 0-200 AND A SMOKE DEVELOPMENT RATING OF 0-450.
16. ALL WORK SHALL COMPLY WITH THE LATEST EDITION OF ALL LOCAL, STATE, AND NATIONAL CODES COVERING THE TYPE OF WORK BEING PERFORMED.
17. PROVIDE PORTABLE FIRE EXTINGUISHERS IN ACCORDANCE WITH NFPA 101. SEE APPENDIX "E" OF NFPA 101 FOR DISTRIBUTION OF EXTINGUISHERS.
18. ALL FIRE WALLS SHALL EXTEND TIGHT TO ROOF DECK AND BE SEALED WITH AN APPROVED FIRE CAULK.
19. ALL ELECTRICAL, MECHANICAL, AND PLUMBING MATERIALS PENETRATING FIRE WALLS SHALL BE FIRE CAULKED. (PENETRATIONS THROUGH RATED CONSTRUCTION SHALL BE SEALED WITH A MATERIAL CAPABLE OF PREVENTING THE PASSAGE OF FLAMES AND HOT GASES WHEN TESTED IN ACCORDANCE WITH ASTM-E814).
20. SERVICE COUNTERS SHALL HAVE AN ACCESSIBLE WRITING SURFACE IN COMPLIANCE WITH ADAAG ACCESSIBILITY GUIDELINES 2010, SECTION 902.3.

DAMMON

ENGINEERING, INC.

LOUISIANA & MISSISSIPPI

Chief Engineer: Brian March, PE
 554 Old Spanish Trail
 Slidell, LA 70458
 www.dammonengineering.com
 info@dammonengineering.com
 PH: 985.649.8832

#	DESCRIPTION	DATE

SEAL:

NEW BOAT STORAGE
 B9 INVESTMENTS

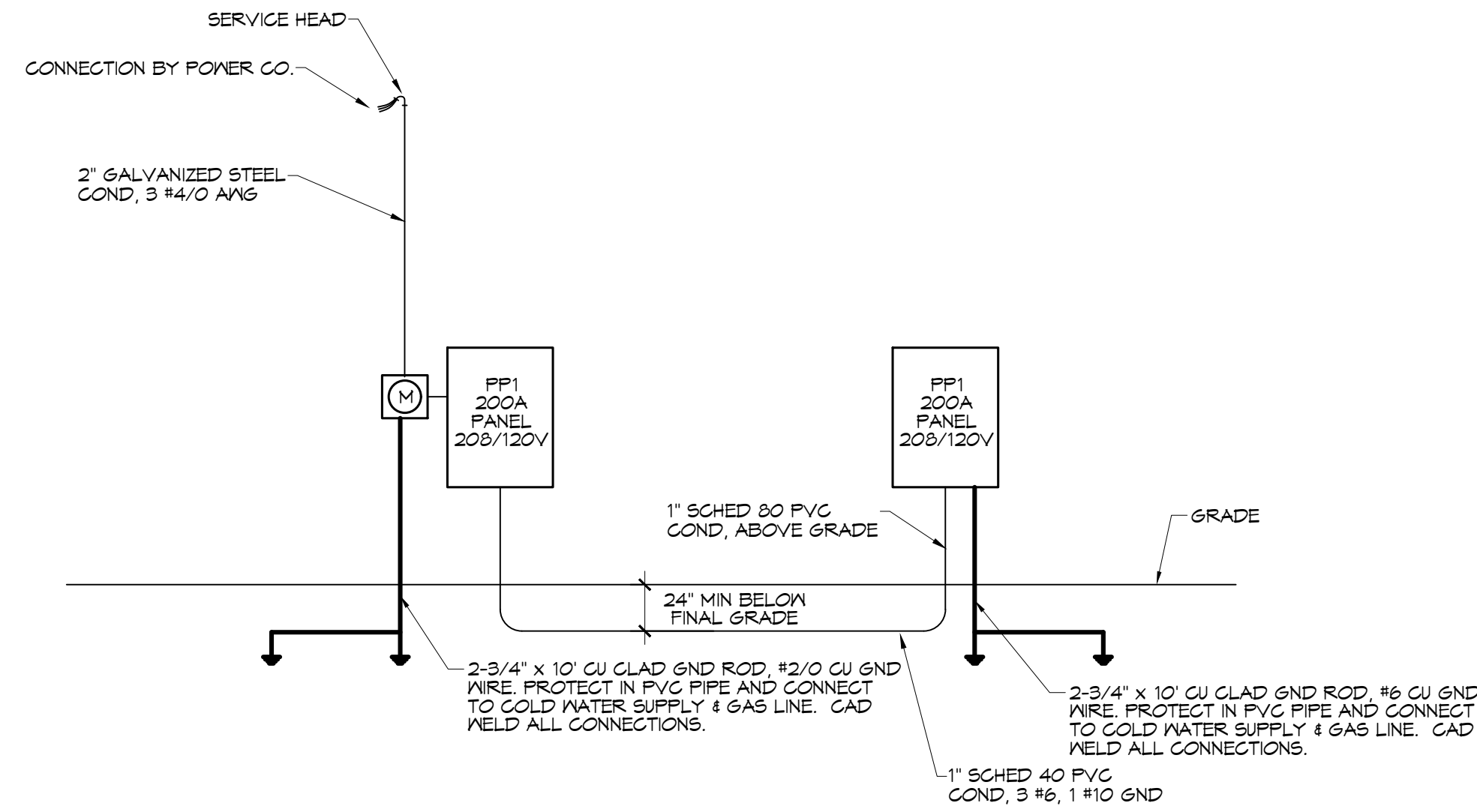
38181 / 38 SERVICE ROAD
 PEARL RIVER, LA 70452
 JOB No: _____
 DATE: 07-20-2022
 DRAWN BY: CKD
 CHECKED BY: JMS

SHEET TITLE:
 FLOOR & ELEVATION PLAN
 FOR 50'X14' STALL

DRAWING NUMBER:

A102

SHEET No: 15 of 11



RISER DIAGRAM
SCALE: NTS

ELECTRICAL LOAD SUMMARY					
POWER COMPANY:	Cleco				
PROJECT NAME:	B9 INVESTMENTS, BOAT STORAGE FACILITY				
PROJECT ADDRESS:	3919B I-59 SERVICE ROAD				
CITY/TOWN:	PEARL RIVER, LOUISIANA 70452				
INTENDED USER:	BOAT STORAGE				
REQUIRED SERVICE:	240/120	VOLTS	1 PHASE	3 WIRE	
SERV ENTR SIZE:	200	AMPS			
HVAC TONNAGE:	0	TONS			
LARGEST MOTOR:		HP	NOTE: MOTORS ABOVE 20 HP MAY REQUIRE REDUCED VOLTAGE STARTING AND ARE NEVER RECOMMENDED FOR USE WITH 240/120V, 1 PH, 3 W SERVICE		
TOTAL BUILDING SQUARE FOOTAGE:		S.F.			
INDIVIDUAL UNIT SQUARE FOOTAGE:		S.F.			
INDIVIDUAL UNIT DESIGNATION:		(MULT OCCUPANCY)			
LOAD SOURCE	1Φ KVA	3Φ KVA	OR	1Φ KW	3Φ KW
BUILDING LIGHTING	2.0				
ELECTRIC WATER HEATING					
HEAT PUMPS					
SUPPLEMENTAL HEAT SYSTEMS					
AIR COND CONDENSING UNITS					
ELEC HEATING (PRIMARY) AHUS					
COOKING					
REFRIGERATION					
RECEPTACLES (STANDARD)	7.2				
RECEPTACLES (COMPUTER)					
TOTAL MOTORS (EXCLUDE HVAC)					
EXTERIOR LIGHTING					
MISCELLANEOUS - CEILING FANS					
OTHER					
TOTAL CONNECTED LOAD	9.2				

PANEL SCHEDULE													
PANEL: P1				VOLTAGE: 240/120V, 1Φ, 3 WIRE, 200A MAIN BKR									
LOCATION: REAR OF BUILDING				ENCLOSURE: SURFACE MOUNTED IV EQUIPMENT GND									
FEEDER SOURCE: UTILITY				BAR SQ D TYPE GO LOAD CENTER									
CKT NO	THHN WIRE SIZE	LOAD DESCRIPTION	LOCATION	BREAKER AMP	POLE	LOAD (VA)		BREAKER POLE AMP	LOAD DESCRIPTION	LOCATION	THHN WIRE SIZE	CKT NO	
						AΦ	BΦ						
1	#12	UNIT 11		20	1	460VA		20		UNIT 12	#12	2	
3	#12	UNIT 13		20	1	460VA		20		UNIT 14	#12	4	
5	#12	UNIT 15		20	1	460VA		20		UNIT 16	#12	6	
7	#12	UNIT 17		20	1	460VA		20		UNIT 18	#12	8	
9	#12	UNIT 19		20	1	460VA		20		UNIT 20	#12	10	
11		SPARE		20	1			20		SPARE		12	
13		SPARE		20	1			20		SPARE		14	
15		SPARE								SPARE		16	
17		SPARE								SPARE		18	
19		SPARE								SPARE		20	
21	#6	PANEL 2		60	2	2000VA				SPARE		22	
23						2000VA				SPARE		24	
SOLID NEUTRAL NEUTRAL WIRE (N)						TOTAL CONNECTED LOAD (VA) = 4300		GROUND BUS GROUND WIRE (G)					
						AΦ = 4600 BΦ = 4600							

PANEL SCHEDULE													
PANEL: P2				VOLTAGE: 240/120V, 1Φ, 3 WIRE, 60A MAIN LUGS									
LOCATION: REAR OF BUILDING				ENCLOSURE: SURFACE MOUNTED IV EQUIPMENT GND									
FEEDER SOURCE: PANEL P1				BAR SQ D TYPE GO LOAD CENTER									
CKT NO	THHN WIRE SIZE	LOAD DESCRIPTION	LOCATION	BREAKER AMP	POLE	LOAD (VA)		BREAKER POLE AMP	LOAD DESCRIPTION	LOCATION	THHN WIRE SIZE	CKT NO	
						AΦ	BΦ						
1	#12	UNIT 1		20	1	460VA		20		UNIT 2	#12	2	
3	#12	UNIT 3		20	1	460VA		20		UNIT 4	#12	4	
5	#12	UNIT 5		20	1	460VA		20		UNIT 6	#12	6	
7	#12	UNIT 7		20	1	460VA		20		UNIT 8	#12	8	
9	#12	UNIT 9		20	1	460VA		20		UNIT 10	#12	10	
11		SPARE		20	1			20		SPARE		12	
13		SPARE		20	1			20		SPARE		14	
15		SPARE								SPARE		16	
17		SPARE								SPARE		18	
19		SPARE								SPARE		20	
21		SPARE								SPARE		22	
23		SPARE								SPARE		24	
SOLID NEUTRAL NEUTRAL WIRE (N)						TOTAL CONNECTED LOAD (VA) = 4600		GROUND BUS GROUND WIRE (G)					
						AΦ = 2300 BΦ = 2300							

DAMMON ENGINEERING, INC.
LOUISIANA & MISSISSIPPI

www.dammonengineering.com
info@dammoneng.com
318.441.8888
318.441.8888

Chief Engineer: Brian Mitchell, PE
318.441.8888
318.441.8888
318.441.8888

REVISIONS	DATE
#	DESCRIPTION

SEAL:

NEW BOAT STORAGE
B9 INVESTMENTS

3919B I-59 SERVICE ROAD
PEARL RIVER, LA 70452

JOB No: 07-20-2022
DATE: 07-20-2022
DRAWN BY: DP/JTL
CHECKED BY: BMM

SHEET TITLE:
ELECTRICAL PANEL SCHEDULES, SECOND FLOOR

DRAWING NUMBER:

E102