

DATE: 03-11-2025, 10:42:52 AM, PROJECT: 38229 Manzella Drive Slidel, DRAWING: C100, SHEET: 1 OF 6, USER: bdammon

GENERAL PAVING NOTES

- ALL NEW CONCRETE SHALL HAVE A MINIMUM COMPRESSIVE STRENGTH OF 3,000 PSI AT 28 DAYS AND A MINIMUM THICKNESS OF 6". CONCRETE MIX SHALL BE IN ACCORDANCE WITH THE LATEST REVISION OF ASTM C-150 TYPE 1.
- ALL REINFORCING STEEL SHALL MEET ASTM-A615 (GRADE 60).
- ALL REINFORCING STEEL SHALL BE SECURELY SUPPORTED TO PREVENT BOTH VERTICAL AND HORIZONTAL MOVEMENT DURING CONCRETE PLACEMENT. ALL CONTROL AND EXPANSION JOINTS SHALL BE LOCATED AND INSTALLED AS SHOWN ON THE PAVING PLAN AND IN ACCORDANCE WITH THE MANUFACTURER'S RECOMMENDATIONS.
- ALL SUB GRADE FILL SHALL BE SELECT GRANULAR MATERIAL COMPACTED TO 95% STANDARD PROCTOR DENSITY IN A MAXIMUM OF 6" LIFTS.
- ANY WORK WITHIN THE ROADWAY OR ADJACENT TO THE ROADWAY CAUSING AN INTERFERENCE TO VEHICULAR TRAFFIC MUST CONFORM TO THE REQUIREMENTS SET FORTH BY THE UNIFORM MANUAL OF TRAFFIC CONTROL DEVICES OF THE STATE OF LOUISIANA. THE CONTRACTOR MUST FURNISH ALL NECESSARY TRAFFIC SIGNS AND/OR BARRICADES AND MAINTAIN THEM DURING CONSTRUCTION ACTIVITY.

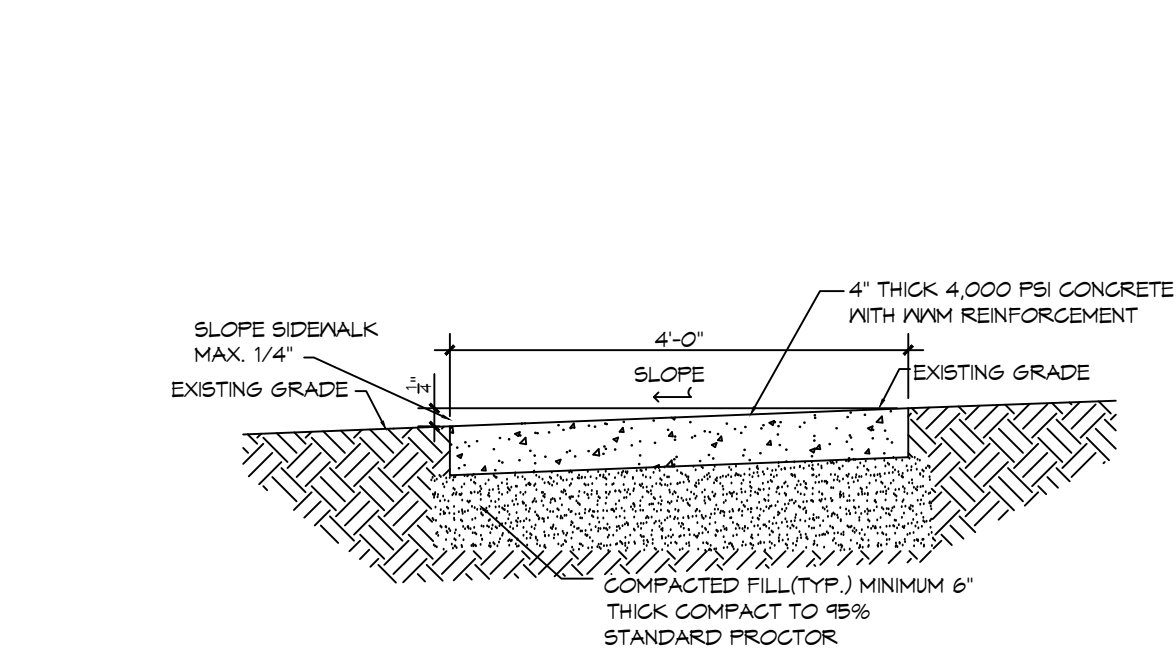
DRAINAGE LEGEND



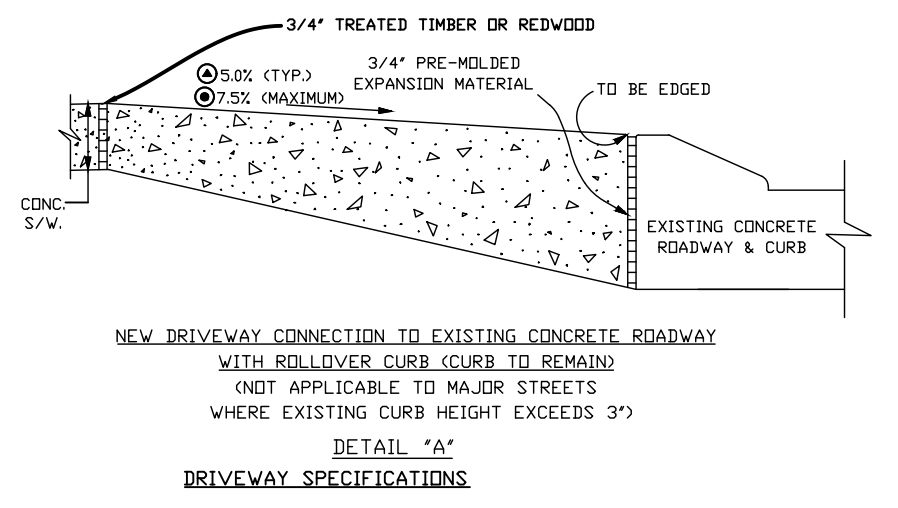
DAMMON ENGINEERING, INC.
LOUISIANA & MISSISSIPPI

www.dammonengineering.com
info@dammonengineering.com
PH: 985.649.9832

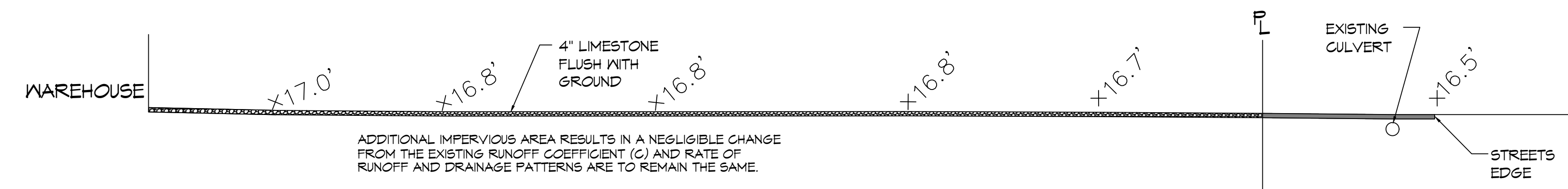
Chief Engineer: Brian Mistich, PE
554 Old Spanish Trail
Slidell, LA 70468



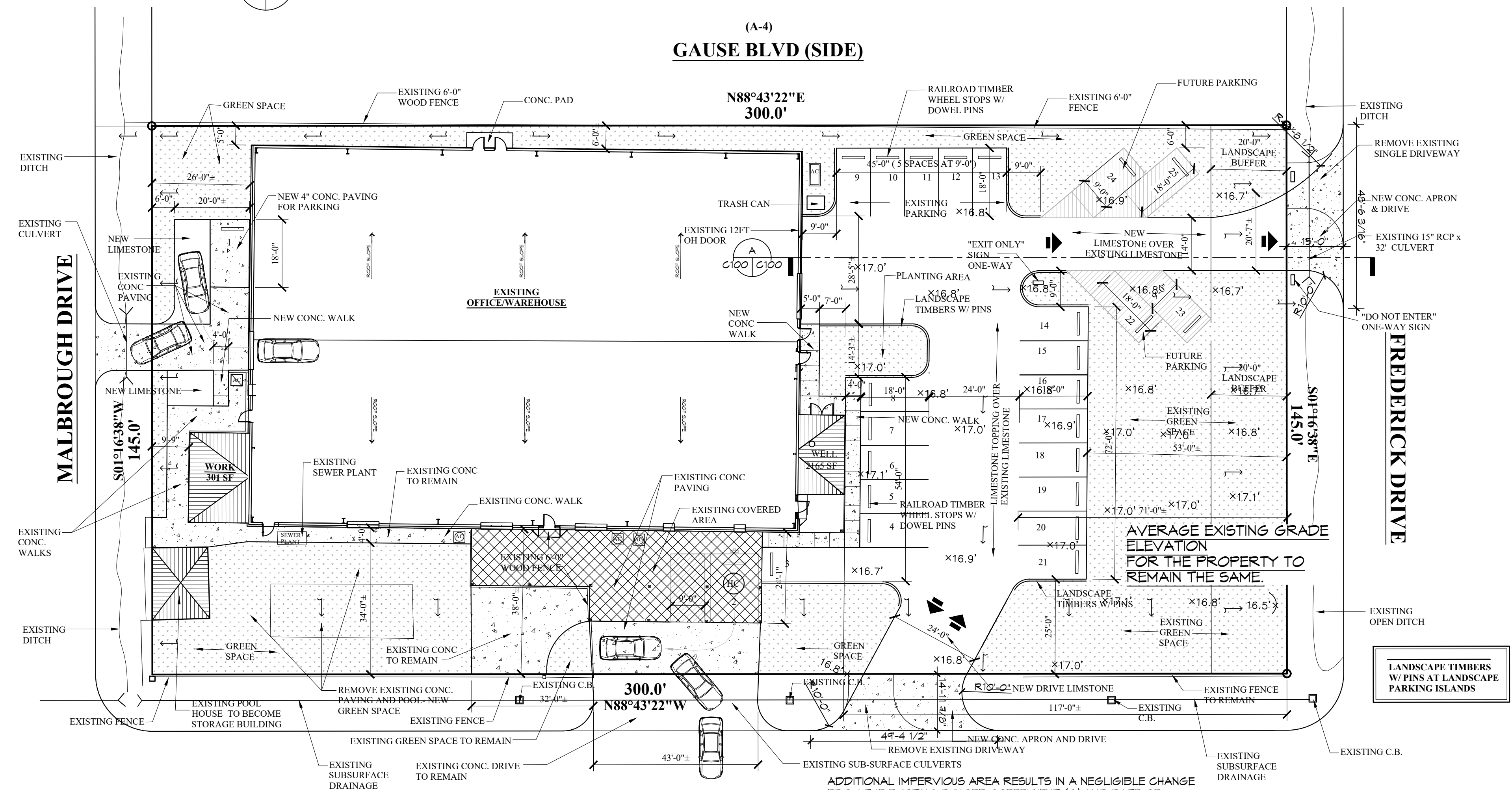
TYPICAL SIDEWALK DETAIL
SCALE: NTS



APRON ROLLOVER CURB DETAILS
SCALE: 1" = 1'-0"



CROSS SECTION
SCALE: 1" = 10'-0"



PROPOSED DRAINAGE AND PAVING PLAN
SCALE: 1" = 20'-0"

PROJECT: 38229 Manzella Drive Slidel			
PRIOR DEVELOPMENT			
Watertight Surfaces	c(1) = 0.9	22,026	sqft = 0.506 Acres
Gravel Surface	c(2) = 0.25	18,651	sqft = 0.428 Acres
Green Space	c(3) = 0.15	2,808	sqft = 0.064 Acres
Summary		43,485	sqft = 0.998 Acres
POST DEVELOPMENT			
Watertight Surfaces	c(1) = 0.9	21,648	sqft = 0.497 Acres
Gravel Surface	c(2) = 0.25	8,355	sqft = 0.192 Acres
Green Space	c(3) = 0.15	13,482	sqft = 0.310 Acres
Summary		43,485	sqft = 0.998 Acres

#	DESCRIPTION	DATE
1	REVISED CALCULATIONS	03-27-25



NEW OFFICE / STORAGE

38229 MANZELLA DRIVE,
SLIDELL, LOUISIANA

JOB No: 03-11-2025
DRAWN BY: BDM
CHECKED BY: BDM

SHEET TITLE: PROPOSED DRAINAGE AND PAVING PLAN

DRAWING NUMBER: **C100**

SHEET No: 1 of 6