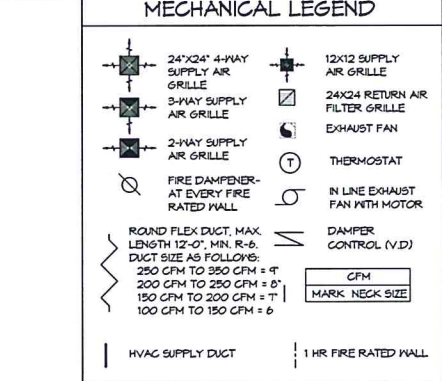


- ### GENERAL HVAC NOTES
- CONCEALED DUCTWORK TO BE GALVANIZED SHEET METAL WRAPPED WITH FERROUS GLASS DUCT WRAP WITH FSK VAPOR BARRIER, MIN R-6. INSTALLED PER SMAGNA STANDARDS. DUCT WORK IMMEDIATELY DOWNSTREAM FROM AHU SHALL BE LINED FOR SOUND ATTENUATION.
 - EXPOSED DUCTWORK TO BE GALVANIZED SHEET METAL LINED WITH FERROUS GLASS DUCT LINER, MIN R-6. INSTALLED PER SMAGNA STANDARDS.
 - ROUND FLEXIBLE DUCT TO BE UL-101, CLASS 1, AIR DUCT MATERIALS.
 - DUCT SIZES SHOWN ARE CLEAR INSIDE DIMENSIONS.
 - IN ALL SYSTEMS OVER 2000 CFM AND LESS THAN 15,000 CFM, SMOKE DETECTORS SHALL BE INSTALLED IN ACCORDANCE WITH NFPA 12E IN THE RETURN DUCT DOWNSTREAM OF THE AIR HANDLING UNIT AND ALL FILTERS TO AUTOMATICALLY STOP THE FAN.
 - PROVIDE UL LISTED 125 F° FIRESTAT IN RETURN AIR OF EACH SYSTEM UNDER 2000 CFM TO SHUT DOWN THE FAN IN THE EVENT OF FIRE.
 - PROVIDE UL RATED FIRE DAMPERS WHERE REQUIRED AT ALL DUCT PENETRATIONS OF FIRE-RATED ASSEMBLIES AND WHERE REQUIRED BY CODE, INCLUDING OUTSIDE AIR INTAKES AND EXHAUST FANS.
 - CONDENSATE DRAINS TO BE PVC PIPE RUN TO PLUMBERS P-TRAP WITHIN FIVE FEET OF AIR HANDLING UNITS.
 - ALL AIR HANDLING SYSTEMS TO BE BALANCED TO ASSURE PROPER AIR FLOWS PER PLANS.
 - ALL THERMOSTATS TO BE AUTOMATIC CHANGEOVER WITH HEAT SWITCH.
 - EXHAUST FAN SHALL BE CONTROLLED BY A SWITCH ON THE WALL IN THE SAME LOCATION AS LIGHT SWITCH(S). PROVIDE BACK DRAFT DAMPER.
 - PROVIDE AND INSTALL WATER PROOF GRILLE VENT IN PROPER ROOF LOCATION FOR PLUMBING FIXTURE EXHAUST.
 - ALL SUPPLY AIR VENTS SHALL BE EQUIPPED WITH AIR CONTROL DAMPERS AT THE REGISTER.
 - LOCATE OUTDOOR UNITS AS SHOWN ON ARCHITECTURAL DRAWINGS.
 - REFRIGERANT LINES SHALL BE SIZED BY UNIT MANUFACTURER AND INSTALLED ACCORDING TO MANUFACTURER'S INSTRUCTIONS.
 - FRESH AIR SHALL BE SUPPLIED TO EACH AIR HANDLER THROUGH EXTERIOR WALL DUCT SUPPLIED WITH A CONTROL DAMPER.
 - ALL ELECTRICAL, MECHANICAL, AND PLUMBING PENETRATING FIRE WALLS SHALL BE FIRE CAULKED. (PENETRATIONS THROUGH RATED CONSTRUCTION SHALL BE SEALED WITH A MATERIAL CAPABLE OF PREVENTING THE PASSAGE OF FLAMES AND HOT GASES WHEN TESTED IN ACCORDANCE WITH ASTM-E814).
 - ALL MECHANICAL SYMBOLS ARE DRAWN DIAGRAMMATICALLY. CONTRACTOR TO VERIFY WITH OWNER LOCATIONS OF VENTS, DAMPERS, REGISTERS, ETC.
 - FLEXIBLE DUCTWORK LENGTH NOT TO EXCEED 12'-0". SUPPORT FLEX DUCT TO PREVENT SAGGING.
 - REFER TO REFLECTED CEILING PLAN FOR FINAL GRILLE AND DIFFUSER LOCATIONS AND COORDINATE AS REQUIRED.
 - FINAL LOCATION OF TEMPERATURE CONTROLS TO BE COORDINATED WITH OWNER AT JOB SITE.
 - PROVIDE AND INSTALL SMOKE DETECTORS AS APPROVED BY LOCAL AHJ'S. PLACE NEAR R/A AND S/A OPENINGS OF AHU AND PROVIDE WITH ACCESS PANEL, WIRING BY ELECTRICAL CONTRACTOR.
 - FRESH AIR INTAKES ARE REQUIRED TO HAVE MOTORIZED OR GRAVITY DAMPERS TO SHUT OFF WHEN SYSTEM IS NOT RUNNING.
 - PROVIDE BRID SCREENS AT ALL EXTERIOR MECHANICAL PENETRATIONS.
 - COORDINATE WALL MOUNTED THERMOSTAT LOCATIONS WITH ALL OWNER FURNISHED ITEMS EITHER WALL MOUNTED OR FLOOR MOUNTED AGAINST PARTITIONS. REFER TO ARCHITECTURAL DRAWINGS.
 - SEE ROOF PLAN FOR ALL ROOF PENETRATIONS.
 - PROVIDE MIN 18 GA GALVANIZED SHEET METAL TO BLANK-OFF GABLE VENTS WHERE INTAKE/EXHAUST DUCTS OCCUR.



2 DETAILS

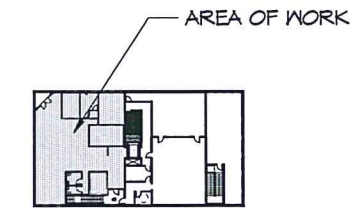
SCALE: N.T.S.

DIFFUSER SCHEDULE				
TAG	SERVICE	NECK SIZE	DESCRIPTION	
A	Supply Air	Ref. Plan	24" x 24" Adjustable Square Cone Diffuser, Price ASCDA w/ Insulated Back Panel	
B	Supply Air	Ref. Plan	12" x 12" Adjustable Square Cone Diffuser, Price ASCDA w/ Insulated Back Panel	
C	Supply Air	Ref. Plan	Double Deflection Louvered Register, Price 510	
D	Return Air	Ref. Plan	Perforated Face Return Air Grille, Price PAR	

- NOTES:**
1. Seal around perimeter of diffusers/grilles to prevent moisture migration from attic space
2. Coordinate with owner / architect for color and finish
3. R value of insulated back panels to exceed R-6

ROOFTOP UNIT SCHEDULE														
TAG	MAKE	MODEL	NOMINAL TONS	TOTAL CFM	RETD COOLING TMBH	RETD HEAT MBH	MOTOR HP	ESP (\"/>						
RTU #1	Dakin	DRH0603D011AXACHLXXXX	5	2000	64.5	40.7	1	.8	12	208	3	47.8	50	1, 2, 3
RTU #2	Dakin	DRH0603D011AXACHLXXXX	5	2000	64.5	40.7	1	.8	12	208	3	47.8	50	1, 2, 3

- NOTES:**
1. Provide non-fused disconnect, RA & SA smoke detectors, economizer, spare filter set, hail guard, condensate overflow switch & programmable 7/24 thermostat.
2. Cooling capacities to be sized in accordance with AHRI standard 210/220 for ASHRAE standard design weather conditions in New Orleans, LA.
3. Install units in accordance with manufacturer's recommendations.



THIS WORK SHALL MEET ALL HVAC CODES

- 2021 EDITION OF THE IMC
- 2021 IECC ENERGY CODE

MECHANICAL PLAN

SCALE: 1/4"=1'-0"

DAMMON ENGINEERING, INC.

LOUISIANA & MISSISSIPPI

Chief Engineer: Brian Wetchik, PE
1101 Dammon Engineering, Inc.
Bossier, LA 70608
PH: 985.497.4332

DATE	REVISIONS	DESCRIPTION

OFFICE BUILDOUT

SOUTHERN INTERIOR SOLUTIONS

404 E. GIBSON STREET, SUITE 2A
MONROE, LA 70133

JOB NO: 2210
DATE: 9-30-2025
DRAWN BY: GCE
CHECKED BY: GCE

SHEET TITLE: MECHANICAL PLAN

DRAWING NUMBER: **M101**

SHEET No: 17 of 7

