



30 VETERANS MEMORIAL BLVD  
KENNER, LA 70062

## FIRE ALARM

SYSTEM FOR:

332 N NEW HAMPSHIRE  
SIS OFFICE SPACE

332 N NEW HAMPSHIRE ST. COVINGTON, LA 70433

## SHOP DRAWINGS

ELECTRICAL CONTRACTOR COCHRAN & GILL SPECIALITIES

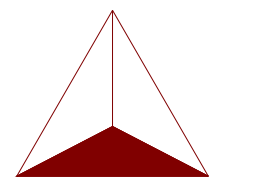
SUBMITTED BY: WAYNE GUILLOT JR

FIRE ALARM - SECURITY - VIDEO SURVEILLANCE - CARD ACCESS - SOUND - NURSE CALL

TELEPHONE: (504) 471-0917

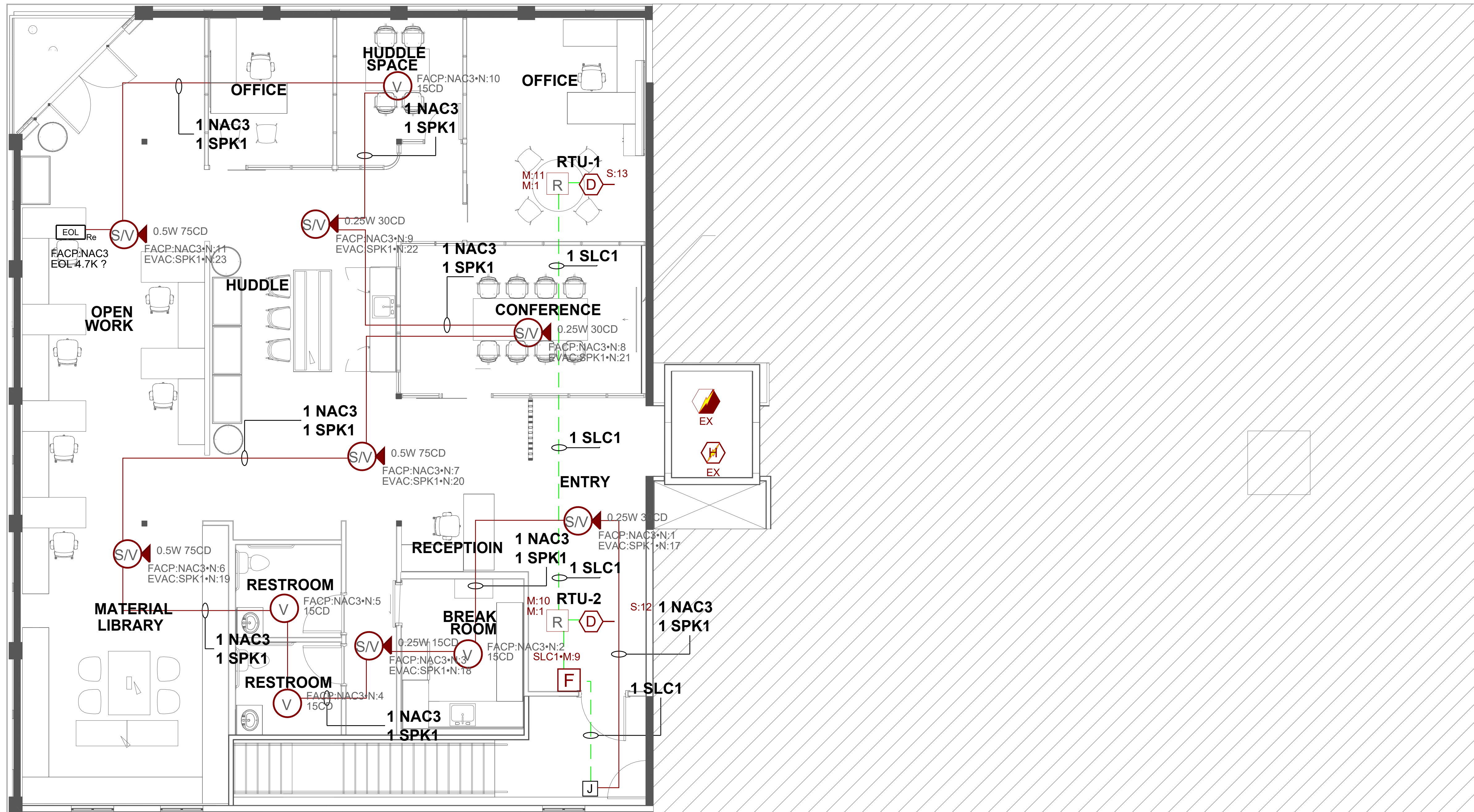
FAX: (504) 471-0924

REVIEWED BY:



David Theriot  
NICET# 133291

Symbol Legend		
SYMBOL	DESCRIPTION	MANUFACTURER
	ADDRESSABLE PHOTO DETECTOR, B300-6 BASE INCLUDED, FLASHSCAN, WHITE, THERMAL	NOTIFIER
	ADDRESSABLE PHOTO DETECTOR, B300-6 BASE INCLUDED, FLASHSCAN ONLY, WHITE	NOTIFIER
	REMOTE TEST CAPABLE ADDRESSABLE PHOTO DETECTOR FLASHSCAN, WHITE	NOTIFIER
	RELAY MODULE, ADDRESSABLE	NOTIFIER
	PULL STATION, ADDRESSABLE	NOTIFIER
	L-Series Speaker Strobe LED, Ceiling, White	SYSTEM SENSOR
	STROBE, CEILING, WHITE	SYSTEM SENSOR
	Generic, EOL, 4.7K Ohms	GENERIC



NO.	DATE	REVISION DESCRIPTION

332 N NEW HAMPSHIRE  
SIS OFFICE SPACE  
FIRE ALARM SHOP DRAWINGS  
50 VETERANS BLVD. KENNER, LA. 70062, PH. (504)471-0917, FAX (504)471-0924.

DRAWN BY: W. GULLOT	DATE: 09/19/2025
APPROVED BY: W. LEVET	DATE: 09/19/2025
PROJECT NUMBER: <b>ADS# 6390</b>	
SCALE: 1/4"=1'-0"	
SHEET TITLE: 2ND FLOOR	
SHEET NUMBER: FA-01	
01	OF 02

# FIRE ALARM SEQUENCE OF OPERATION MATRIX

INITIATION ACTION	MANUAL PULL STATION	SMOKE DETECTOR	DUCT SMOKE DETECTOR	WATER FLOW SWITCH	HEAT DETECTOR	ELEVATOR LOBBY SMOKE DETECTOR	HEAT DETECTOR IN ELEVATOR SHAFT OR PIT	SUPERVISORY VALVE SWITCH	ELEVATOR SHUNT-TRIP SUPERVISION	OPENS, SHORTS, AND GROUNDS ON CIRCUITS	REMOVING, TAMPERING OR OPENING DEVICES	ABNORMAL VOLTAGE, BATTERY OR FACP TROUBLES	ABNORMAL SWITCH POSITION AT FACP	FIRE PUMP AC FAIL DEAD-PHASE, PHASE-REVERSE
CONTINUOUSLY OPERATE ALARM NOTIFICATION DEVICES	X	X	X	X	X	X	X							
TRANSMIT ALARM SIGNAL TO THE MONITORING SERVICE	X	X	X	X	X	X	X							
SWITCH HEATING, VENTILATING AND AIR-CONDITIONING EQUIPMENT CONTROLS TO FIRE-ALARM MODE	X	X	X	X	X	X	X							
RECALL ELEVATORS TO PRIMARY OR ALTERNATE RECALL FLOORS						X								
DISPLAY SUPERVISION CONDITION AT FACP			X					X	X					
TRANSMIT SUPERVISORY SIGNAL TO THE MONITORING SERVICES			X					X	X					
TRANSMIT TROUBLE SIGNAL TO THE MONITORING SERVICES										X	X	X	X	X
DISPLAY TROUBLE CONDITION AT FACP										X	X	X	X	X
RECORD EVENTS IN THE SYSTEM MEMORY	X	X	X	X	X	X	X	X	X	X	X	X	X	X
ELEVATOR SHUNT TRIP							X							

Battery Calculations for Panel: FACP					
Part No: NFW-100X - NFW-100X, FACP, Addressable Fire Warden Panel					
Part No.	Qty.	Description	Standby	Total Standby	Total Alarm
Panel Equipment					
NFW-100X_MB	1	NFW-100X_MB, Main Board	0.1410A	0.1410A	0.4000A
Peripheral Devices					
NOT-BG12LX	6	PULL STATION, ADDRESSABLE (Signaling line)	0.0002A	0.0012A	0.0012A
NP-200	5	ADDRESSABLE PHOTO DETECTOR, B300-6 BASE INCLUDED, FLASHSCAN ONLY, WHITE (Signaling line)	0.0002A	0.0010A	0.0035A
NP-200R	6	REMOTE TEST CAPABLE ADDRESSABLE PHOTO DETECTOR FLASHSCAN, WHITE (Signaling line)	0.0002A	0.0012A	0.0045A
NC-100R	3	RELAY MODULE, ADDRESSABLE (Signaling line)	0.0003A	0.0009A	0.0051A
NC-100R	1	RELAY MODULE, ADDRESSABLE (Signaling line)	0.0003A	0.0003A	0.0000A
NP-200T	2	ADDRESSABLE PHOTO DETECTOR, B300-6 BASE INCLUDED, FLASHSCAN, WHITE, THERMAL (Signaling line)	0.0002A	0.0004A	0.0000A
NMM-100P	1	MINI MODULE, ADDRESSABLE (Signaling line)	0.0004A	0.0004A	0.0004A
SWLED	4	SWLED, Strobe, Wall, White, L-Series (Notification) 15CD	0.0000A	0.0000A	0.0180A
SPSWLED	5	L-Series Speaker Strobe LED, Wall, White (Notification) 95CD	0.0000A	0.0000A	0.0750A
SCWLED	10	STROBE, CEILING, WHITE (Notification) 15CD	0.0000A	0.0000A	0.0180A
SPSCWLED	7	L-Series Speaker Strobe LED, Ceiling, White (Notification) 15CD	0.0000A	0.0000A	0.0180A
SPSCWLED	5	L-Series Speaker Strobe LED, Ceiling, White (Notification) 75CD	0.0000A	0.0000A	0.0700A
SPSWLED	1	L-Series Speaker Strobe LED, Wall, White (Notification) 15CD	0.0000A	0.0000A	0.0180A
SPSCWLED	5	L-Series Speaker Strobe LED, Ceiling, White (Notification) 30CD	0.0000A	0.0000A	0.0220A
SCWLED	1	STROBE, CEILING, WHITE (Notification) 30CD	0.0000A	0.0000A	0.0220A
GEOL4.7K	3	Generic, EOL, 4.7K Ohms (Notification)	0.0000A	0.0000A	0.0000A
SWK	1	STROBE, 2 WIRE, M-C, WHITE, WALL, WP (Notification) 30CD	0.0000A	0.0000A	0.0940A
NC-100R	4	RELAY MODULE, ADDRESSABLE (Power)	0.0000A	0.0000A	0.0000A
			Total Peripheral Stby	0.0053A	Total Periph Alarm
			Total Standby Amps	0.1463A	Total Alarm Amps
			Standby time: 24 Hrs		3.511Ah
			Alarm time: 15 Min		0.452Ah
			Battery requirement:		3.963Ah
			Requirement with compensation:		4.954Ah
Compensation Factors - Standby: 1.25 Alarm: 1.25					

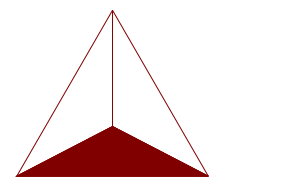
Battery Calculations for Panel: EVAC					
Part No: NFC-50/100 - FIRST COMMAND 50/100 EMERGENCY VOICE EVACUATION PANEL					
Part No.	Qty.	Description	Standby	Total Standby	Total Alarm
Panel Equipment					
NFC-50/100_MB	1	NFC-50/100_MB, Main Board	0.2850A	0.2850A	2.3850A
Peripheral Devices					
SPSWLED	5	L-Series Speaker Strobe LED, Wall, White (Notification) 79dB 0.5 Watts	0.0000A	0.0000A	0.0000A
SPSCWLED	14	L-Series Speaker Strobe LED, Ceiling, White (Notification) 76dB 0.25 Watts	0.0000A	0.0000A	0.0000A
SPSWLED	1	L-Series Speaker Strobe LED, Wall, White (Notification) 76dB 0.25 Watts	0.0000A	0.0000A	0.0000A
SPSCWLED	3	L-Series Speaker Strobe LED, Ceiling, White (Notification) 79dB 0.5 Watts	0.0000A	0.0000A	0.0000A
			Total Peripheral Stby	0.0000A	Total Periph Alarm
			Total Standby Amps	0.2850A	Total Alarm Amps
			Standby time: 24 Hrs		6.84Ah
			Alarm time: 15 Min		0.596Ah
			Battery requirement:		7.436Ah
			Requirement with compensation:		9.295Ah
Compensation Factors - Standby: 1.25 Alarm: 1.25					

Circuit Calculations Panel: FACP Card: FACP Circuit: NAC3						
Circuit Name: NAC3						
Circuit Type: Notification Terminal Voltage: 20.4V:DC Amperage: 2.5000A						
Cable: 7611323, Wire/Cable/Fiber, 16 AWG, 2 Conductor Bare Copper, Twisted #16						
Calculations based on Running Total Length.						
Design Criteria: Ambient temperature: 167°F Max. operating voltage drop: 18%						
Device	Part No	Appliance Desc	Distance	Current	Voltage	Voltage Drop
20.4V						
N:1	SPSCWLED	L-Series Speaker Strobe LED, Ceiling, White, 30CD	42'-6"	0.0220A	20.3231V	(0.0769V)
N:2	SCWLED	STROBE, CEILING, WHITE, 15CD	16'-0"	0.0180A	20.2956V	(0.0275V)
N:3	SPSCWLED	L-Series Speaker Strobe LED, Ceiling, White, 15CD	7'-4"	0.0180A	20.2842V	(0.0114V)
N:4	SCWLED	STROBE, CEILING, WHITE, 15CD	8'-5"	0.0180A	20.2719V	(0.0123V)
N:5	SCWLED	STROBE, CEILING, WHITE, 15CD	5'-11"	0.0180A	20.2646V	(0.0073V)
N:6	SPSCWLED	L-Series Speaker Strobe LED, Ceiling, White, 75CD	15'-1"	0.0700A	20.2442V	(0.0204V)
N:7	SPSCWLED	L-Series Speaker Strobe LED, Ceiling, White, 75CD	22'-8"	0.0700A	20.2222V	(0.0222V)
N:8	SPSCWLED	L-Series Speaker Strobe LED, Ceiling, White, 30CD	19'-3"	0.0220A	20.2095V	(0.0125V)
N:9	SPSCWLED	L-Series Speaker Strobe LED, Ceiling, White, 30CD	21'-0"	0.0220A	20.1979V	(0.0116V)
N:10	SCWLED	STROBE, CEILING, WHITE, 15CD	14'-0"	0.0180A	20.1918V	(0.0062V)
N:11	SPSCWLED	L-Series Speaker Strobe LED, Ceiling, White, 75CD	28'-7"	0.0700A	20.1822V	(0.0098V)
EOL:	GEOL4.7K	Generic, EOL, 4.7K Ohms	3'-4"	0.0000A	20.1822V	(0V)
				Total Current: 0.3660A		
				(Total VDrop Percent: 1.07%)		Total Voltage Drop : 0.218V

Circuit Calculations Panel: EVAC Card: EVAC Circuit: SPK1							
Design Criteria: Ambient temperature: 167°F Maximum dB Drop: 3 dB							
Circuit	Description	Type	Total Len	SPSWLED	SPSCWLED	Total Watts	Gauge
SPK1		Notification/Audio 25v	712'-9 1/2"	6	17	7.75 Watts	#16
						dB Loss	Max Allowable Len
						-0.38 dB	6653'



REVIEWED BY:



David Theriot  
NICET# 133291

NO.	DATE	REVISION DESCRIPTION

332 N NEW HAMPSHIRE  
 SIS OFFICE SPACE  
 CONCORD, MA 01735  
 FIRE ALARM SHOP DRAWINGS  
 30 VETERANS BLVD, KENNER, LA, 70062, PH: (504) 471-0917, FAX: (504) 471-0924.

DRAWN BY: W. GUILLOT DATE: 09/19/2025

APPROVED BY: W. LEVET DATE: 09/19/2025

PROJECT NUMBER:  
**ADS# 6390**

SCALE: N.T.S.  
SHEET TITLE:  
RISER & SEQUENCE OF OPERATION & BATTERY CALCS

SHEET NUMBER:  
FA-03