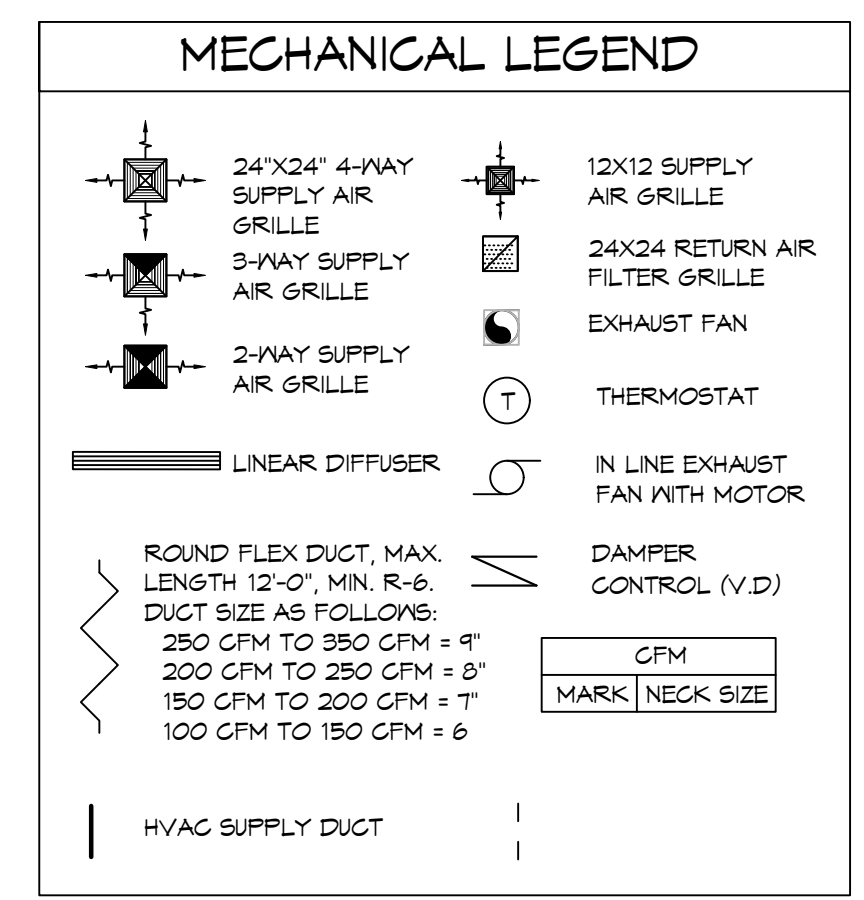


2 DETAILS
SCALE: N.T.S.

- ### GENERAL HVAC NOTES
- CONCEALED DUCTWORK TO BE GALVANIZED SHEET METAL WRAPPED WITH FIBROUS GLASS DUCT WRAP WITH FSK VAPOR BARRIER, MIN R-6. INSTALLED PER SMACNA STANDARDS. DUCT WORK IMMEDIATELY DOWNSTREAM FROM AHU SHALL BE LINED FOR SOUND ATTENUATION.
 - EXPOSED DUCTWORK TO BE GALVANIZED SHEET METAL LINED WITH FIBROUS GLASS DUCT LINER, MIN R-6. INSTALLED PER SMACNA STANDARDS.
 - EXPOSED SPIRAL DUCTWORK TO BE PAINTABLE EXTERIOR WITH A 1" FIBROUS GLASS DUCT LINER HAVING A MINIMUM R VALUE OF 4.0.
 - ROUND FLEXIBLE DUCT TO BE UL-181, CLASS 1, AIR DUCT MATERIALS. DUCT SIZES SHOWN ARE CLEAR INSIDE DIMENSIONS.
 - IN ALL SYSTEMS OVER 2000 CFM AND LESS THAN 15,000 CFM, SMOKE DETECTORS SHALL BE INSTALLED IN ACCORDANCE WITH NFPA 72E IN THE RETURN DUCT DOWNSTREAM OF THE AIR HANDLING UNIT AND ALL FILTERS TO AUTOMATICALLY STOP THE FAN.
 - PROVIDE UL LISTED 125°F FIRESTAT IN RETURN AIR OF EACH SYSTEM UNDER 2000 CFM TO SHUT DOWN THE FAN IN THE EVENT OF FIRE.
 - CONDENSATE DRAINS TO BE PVC PIPE RUN TO PLUMBERS P-TRAP WITH FIVE FEET OF AIR HANDLING UNITS.
 - ALL AIR HANDLING SYSTEMS TO BE BALANCED TO ASSURE PROPER AIR FLOWS PER PLANS.
 - ALL THERMOSTATS TO BE AUTOMATIC CHANGEOVER WITH HEAT SWITCH.
 - EXHAUST FAN SHALL BE CONTROLLED BY A SWITCH ON THE WALL IN THE SAME LOCATION AS LIGHT SWITCHES. PROVIDE BACK DRAFT DAMPER.
 - PROVIDE AND INSTALL WATER PROOF GRILLE VENT IN PROPER ROOF LOCATION FOR PLUMBING FIXTURE EXHAUST.
 - ALL SUPPLY AIR VENTS SHALL BE EQUIPPED WITH AIR CONTROL DAMPERS AT THE REGISTER.
 - REFRIGERANT LINES SHALL BE SIZED BY UNIT MANUFACTURER AND INSTALLED ACCORDING TO MANUFACTURER'S INSTRUCTIONS.
 - ALL MECHANICAL SYMBOLS ARE DRAWN DIAGRAMMATICALLY. CONTRACTOR TO VERIFY WITH OWNER LOCATIONS OF VENTS, DAMPERS, REGISTERS, ETC.
 - FINAL LOCATION OF TEMPERATURE CONTROLS TO BE COORDINATED WITH OWNER AT JOB SITE.
 - PROVIDE AND INSTALL SMOKE DETECTORS AS APPROVED BY LOCAL AHJ'S. PLACE NEAR R/A AND S/A OPENINGS OF AHU AND PROVIDE ACCESS PANEL, WIRING BY ELECTRICAL CONTRACTOR.
 - FRESH AIR INTAKES ARE REQUIRED TO HAVE MOTORIZED OR GRAVITY DAMPERS TO SHUT OFF WHEN SYSTEM IS NOT RUNNING.
 - PROVIDE BIRD SCREENS AT ALL EXTERIOR MECHANICAL PENETRATIONS.



EXHAUST FAN SCHEDULE

TAG	FAN	POWER	MAKE / MODEL	REMARKS
EF-1	AIRFLOW (CFM)	TSP (T'wg)	VAC PH HZ Amps	
	70	0.20	120 1 60 0.37	Broan A80 1, 2

Notes:
1. Install per manufacturer's recommendations.
2. Furnish with matching grille.

DIFFUSER SCHEDULE

TAG	SERVICE	NECK SIZE	DESCRIPTION
A	Supply Air	Ref. Plan	24"x 24" Adjustable Square Cone Diffuser, Price ASCDA w/ Insulated Back Panel
B	Supply Air	Ref. Plan	12"x 12" Adjustable Square Cone Diffuser, Price ASCDA w/ Insulated Back Panel
C	Supply Air	Ref. Plan	Double Deflection Louvered Register, Price 510
D	Supply Air	Ref. Plan	Spiral Duct Grille, Price SDG Series
E	Supply Air	Ref. Plan	Linear Slot Diffuser, Price SDS
F	Return Air	Ref. Plan	Perforated Face Return Air Grille, Price PAR
G	Return Air	Ref. Plan	Slotted Return Air Grille, Hart Cooley 94A Series 35 Deg Fixed

Notes:
1. Seal around perimeter of diffusers/grilles to prevent moisture migration from attic space
2. Coordinate with owner / architect for color and finish
3. R value of insulated back panels to exceed R-6

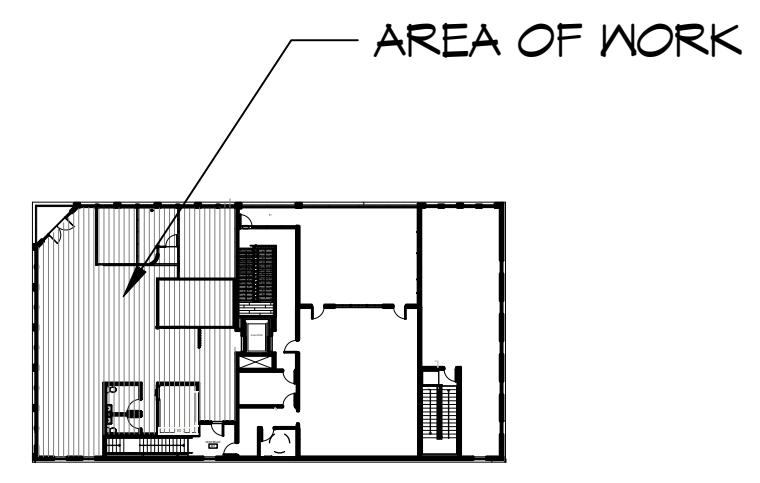
ROOFTOP UNIT SCHEDULE

TAG	MAKE	MODEL	NOMINAL TONS	TOTAL CFM	Motor HP	Fresh Air cfm	HEAT KW	POWER VAC PH MCA MOP	REMARKS
RTU #1	Daikin	DHC0363D0000075C	3	1200	1	120	12	208 3 33.1 35	1, 2, 3
RTU #2	Daikin	DHC0903W000010C	7.5	3000	2.4	300	20	208 3 65.7 70	1, 2, 3, 4

Notes:
1. Provide non-fused disconnect, RA & SA smoke detectors, spare filter set, hail guard, condensate overflow switch & programmable 7/24 thermostat.
2. Cooling capacities to be rated in accordance with AHRI standard 210/290 for ASHRAE standard design weather conditions in New Orleans, LA.
3. Install units in accordance with manufacturer's recommendations.
4. Provide 2 stage unit & Thermostat

THIS WORK SHALL MEET ALL HVAC CODES

- 2021 EDITION OF THE IMC
- 2021 IECC ENERGY CODE



1 MECHANICAL PLAN
SCALE: 1/4"=1'-0"

DAMMON ENGINEERING, INC.
LOUISIANA & MISSISSIPPI
Chief Engineer: Brian Mistich, PE
www.dammonengineering.com
554 Old Spanish Trail
Slidell, LA 70458
PH: 985.649.5832

REVISIONS	DATE

SEAL:

OFFICE BUILDOUT
SOUTHERN INTERIOR SOLUTIONS
404 E. GIBSON STREET, SUITE 2A
COVINGTON, LA 70433
JOB No: 2512 DATE: 9-30-2025
DRAWN BY: CAC CHECKED BY: CAC

SHEET TITLE: MECHANICAL PLAN
DRAWING NUMBER: **M101**
SHEET No: 17 of 7