

LIFE - SAFETY INFORMATION	
APPLICABLE CODES	
NFPA 101 LIFE-SAFETY CODE 2015	
OCCUPANCY TYPE(S) AND CHAPTER(S)	
ASSEMBLY A-3 & E (CHAPTER 12)	
MIXED OCCUPANCY (REFERENCE CHAPTER 6)	
OCCUPANT LOAD FACTOR (REFERENCE TABLE 7.3.1.2)	
ASSEMBLY CONCENTRATED USE	8716 SQ FT / 7 NET 1,245 OCCUPANTS
STAGES	2482 SQ FT / 15 NET 165 OCCUPANTS
EDUCATIONAL CLASSROOMS	3600 SQ FT / 20 NET 180 OCCUPANTS
SHOP / LAB / VOCATIONAL	1982 SQ FT / 50 NET 40 OCCUPANTS
TOTAL OCCUPANTS	1630 OCCUPANTS
CLASSIFICATION OF HAZARD OF CONTENTS	
(REFERENCE: OCCUPANCY CHAPTER AND 6.2.2; SPECIFY LOW, ORDINARY, OR HIGH)	
CONSTRUCTION TYPE= VB (REFERENCE: CHAPTERS, TABLE A.8.2.1.2 AND COMMENTARY TABLE 6.1 IN HANDBOOK)	
MINIMUM EXIT SEPARATION DISTANCE FOR REMOTELY LOCATED EXITS	
(REFERENCE: SECTION 7.5; SPECIFY 1/2 OR 1/3 DIAGONAL DISTANCE OF AREA SERVED)	
1/2 DIAGONAL =	47'-5"
MAXIMUM DEAD-END CORRIDORS (REFERENCE: OCCUPANCY CHAPTER AND TABLE A.7.6)	
50 FEET	
MAXIMUM COMMON PATH OF TRAVEL DISTANCE (REFERENCE: OCCUPANCY CHAPTER AND TABLE A.7.6)	
100 FEET	
MAXIMUM TRAVEL DISTANCE TO EXITS (REFERENCE: OCCUPANCY CHAPTER AND TABLE A.7.6)	
250 FEET	
EXTINGUISHMENT REQUIREMENTS FULLY SPRINKLERED	
DETECTION, ALARM, AND COMMUNICATION SYSTEMS FULL ALARM	
ALLOWABLE HEIGHT AND BUILDING AREA PER IBC EQUIVALENT CONSTRUCTION TYPE	

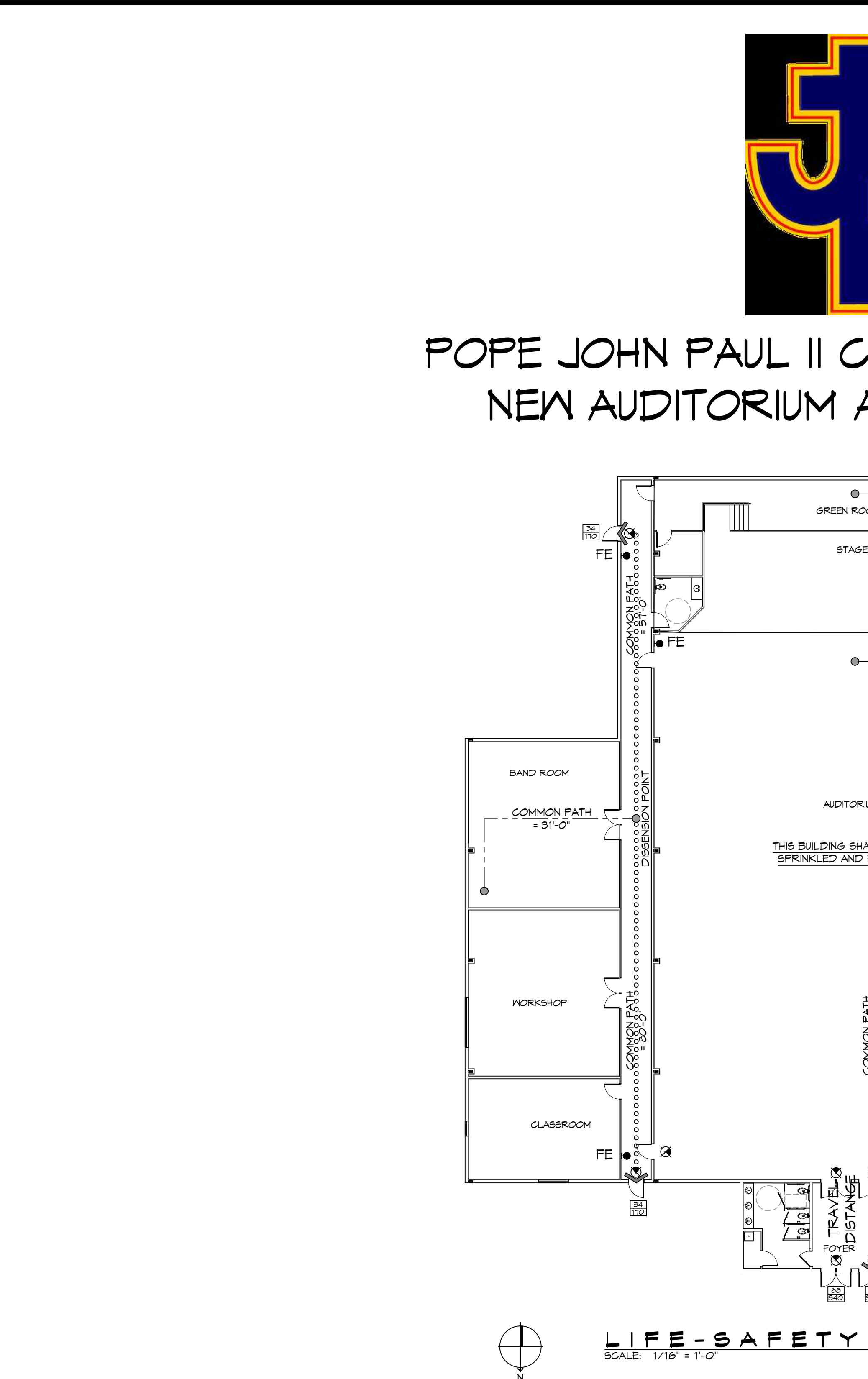
BUILDING CODE INFORMATION	
APPLICABLE CODES	
IBC 2021	
ASSEMBLY GROUP AS-E (IBC 2021 CHAPTER 3)	
OCCUPANT LOAD CALCULATIONS (TABLE 1004.1.2)	
ASSEMBLY A-3 CONCENTRATED (CHAIRS ONLY NOT FIXED)	8716 SQ FT / 7 NET 1,245 OCCUPANTS
STAGES & PLATFORMS	2482 SQ FT / 15 NET 165 OCCUPANTS
CLASSROOM AREA	3600 SQ FT / 20 NET 180 OCCUPANTS
SHOPS & OTHER VOCATIONAL ROOM AREAS	1982 SQ FT / 50 NET 40 OCCUPANTS
TOTAL OCCUPANTS	1630 OCCUPANTS
CONSTRUCTION TYPE(S) (TABLE 503)	
VB (SECTION 503)	
ALLOWABLE HEIGHT AND BUILDING AREA LIMITED BY TYPE OF CONSTRUCTION	
MAXIMUM HEIGHT IN STORES (SECTION 503 & 504, TABLE 503)	1
MAXIMUM AREA IN SQUARE FEET (SECTION 503, 506 & 507, TABLE 503) WITH AREA INCREASE	24,000 SF

WIND SPEED DESIGN REQUIREMENTS	
THIS BUILDING SHALL BE DESIGNED WITH IBC SEC 1609 AS A FULLY ENCLOSED BLDG USING THE FOLLOWING INFORMATION:	
WIND DESIGN DATA: DETERMINATION OF WIND LOADS SHALL BE IN ACCORDANCE WITH IBC SEC 1609.3 (A), (B), OR (C) DEPENDING ON THE RISK CATEGORY	
ULTIMATE WIND SPEED =	141 MPH (IBC FIG 1609C)
NOMINAL WIND SPEED =	V _{ref} = 109 MPH
RISK FACTOR:	CATEGORY II
SURFACE ROUGHNESS =	B
TOPOGRAPHIC FACTOR =	1
EXPOSURE =	B
INTERNAL PRESSURE COEFFICIENT (ASCE 7-10 TABLE 26.11-1):	
± 0.10	
LIVE LOADS (IBC SEC 1607)	
ASSEMBLY NOT FIXED SEATING (IBC TABLE 1607.1):	60 PSF
PLATFORMS (ASSEMBLY) (IBC TABLE 1607.1):	100 PSF
LOBBIES (IBC TABLE 1607.1):	100 PSF
CLASSROOMS (IBC TABLE 1607.1):	40 PSF UNIFORM, 1,000 LB CONCENTRATED
ROOF LIVE LOADS (IBC TABLE 1607.1):	20 PSF UNIFORM, 300 LB CONCENTRATED
SNOW LOADS (IBC TABLE 1608):	
GROUND SNOW LOAD (IBC FIG 1608.2):	5 PSF

FLOOD ZONE INFORMATION	
BASED ON THE SURVEY OF THIS PROPERTY BY J.V. BURKES AND ASSOCIATES, INC. THIS PROPERTY IS IN A SPECIAL FLOOD HAZARD AREA. F.I.R.M. COMMUNITY MAP NO 220205 0420 E, REVISED 4/21/99	
FLOOD ZONE:	A
BASE FLOOD ELEVATION	11.0 NGVD
ELEVATIONS REFER TO NGVD 1929 DATUM	

PROJECT DESCRIPTION	
THIS WILL BE A 20, 546 SQ. FT. PRE ENGINEERED METAL BUILDING FOR A NEW AUDITORIUM AND WILL INCLUDE CLASSROOMS.	

LIFE - SAFETY LEGEND	
SYMBOL	DESCRIPTION
	EXITS
	DOOR FIRE RATING (MINUTES)
	DOOR WIDTH/EGRESS CAPACITY
	EXIT LIGHT
	FIRE EXTINGUISHER AND CABINET
	FIRE EXTINGUISHER W/ WALL MTD BRACKET
	COMMON PATH OF TRAVEL
	TRAVEL DISTANCE
	DECISION POINT
	SMOKE PARTITION
	ONE-HOUR FIRE RATED PARTITION
	TWO-HOUR FIRE RATED PARTITION
	TWO-HOUR FIRE/SMOKE PARTITION
	FOUR-HOUR RATED PARTITION



SHEET INDEX	
SHEET #	SHEET TITLE
G001	GENERAL PROJECT, LIFE-SAFETY, AND BUILDING CODE INFORMATION
G002	ACCESSIBILITY INFORMATION
C101	SITE PLAN
C102	UTILITY SITE PLAN
C103	SITE PAVING PLAN
C104	EROSION CONTROL PLAN
A101	FLOOR PLAN
A102	REFLECTED CEILING PLAN
A103	ELEVATION PLAN
A104	INTERIOR ELEVATIONS PLAN
A105	BUILDING SECTION PLAN
P101	PLUMBING PLAN, RISER, & DETAILS
M101	MECHANICAL PLAN
M102	MECHANICAL SCHEDULES & DETAILS
E101	POWER PLAN
E102	LIGHTING PLAN
E103	CIRCUIT PANELS AND ONE-LINE DIAGRAM

GENERAL NOTES	
1.	ALL MATERIALS AND WORK, INCIDENTAL TO THE CONSTRUCTION OF THIS PROJECT, SHALL CONFORM TO ALL GOVERNING CODES, AND REGULATIONS OF AGENCIES IN AUTHORITY.
2.	CONTRACTOR SHALL PROVIDE ALL PUBLIC PROTECTIONS NECESSARY AS REQUIRED BY LAW.
3.	THE DRAWINGS, SPECIFICATIONS AND ANY SUBSEQUENTLY ISSUED ADDENDA, AMENDMENTS OR SUCH CHANGE ORDERS APPROVED BY THE OWNER AND THE CONTRACTOR ARE PART OF THESE CONTRACT DOCUMENTS.
4.	DO NOT SCALE DRAWINGS. CONSULT WITH THE ARCHITECT REGARDING ANY ITEMS IN THE CONTRACT DOCUMENTS THAT REQUIRE CLARIFICATION.
6.	TRASH SHALL BE REMOVED FROM THE SITE NOT LESS THAN TWICE MONTHLY.
7.	THE GENERAL CONTRACTOR SHALL VERIFY EXISTING CONDITIONS PRIOR TO COMMENCING WORK AND REPORT ANY AND ALL DISCREPANCIES TO THE ARCHITECT.
8.	CONTRACTOR VEHICLES AND EQUIPMENT NECESSARY FOR CONSTRUCTION MAY BE PARKED ON THE SITE. OTHER VEHICLES PARKED ON THE SITE REQUIRE THE OWNER'S PERMISSION.
10.	NAMING A CERTAIN BRAND, MAKE OR MANUFACTURER IS TO DESIGNATE THE GENERAL CONTRACTOR'S QUALITY STANDARD OF THE PRODUCT DESIRED. SUBMITTALS OF THESE PRODUCTS SHALL BE SUBMITTED PRIOR TO BIDDING.
11.	ALL MATERIALS/EQUIPMENT SHALL BE INSTALLED PER MANUFACTURER'S RECOMMENDATIONS. WORK NOT CONSISTENT WITH MANUFACTURER'S RECOMMENDATIONS SHALL BE REJECTED BY THE ARCHITECT.

DAMMON ENGINEERING, INC.
LOUISIANA & MISSISSIPPI

Chief Engineer: Brian Mistich, PE
554 Old Spanish Trail
Slidell, LA 70458
www.dammonengineering.com
info@dammonengineering.com
PH: 985.649.5832 F: 985.641.5590

#	DESCRIPTION	DATE



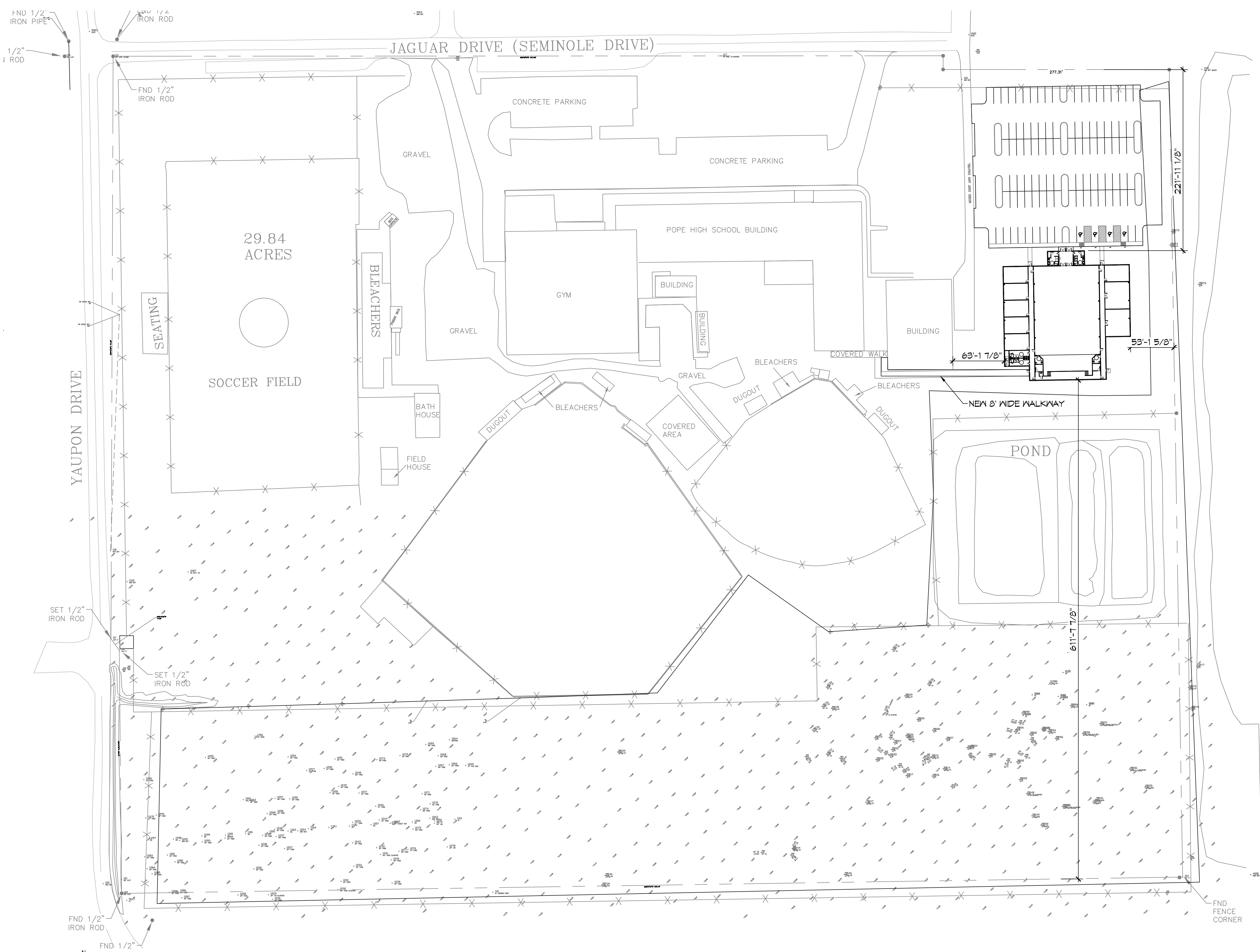
NEW AUDITORIUM POPE JOHN PAUL II HIGH SCHOOL

1501 LAJARR DE SUDRELL, LA 70461
JOB No: 2522 DATE: 02-14-2026
DRAWN BY: CKD CHECKED BY: JMS

SHEET TITLE: GENERAL PROJECT, LIFE-SAFETY, AND BUILDING CODE INFORMATION
DRAWING NUMBER: **G001**

SHEET No: 1 of 17

FILE NAME: C:\Projects\2022\1921 - Pope John Paul II High School\1921 - Pope John Paul II High School\1921 - Pope John Paul II High School.dwg



1 PROPOSED SITE PLAN
SCALE: 1"=60'-0"

PLANNING
ZONED: NC-2 NEIGHBORHOOD COMMERCIAL
FLOOD ZONE
ZONE: 'C'
BUILDING ELEVATION
BASE FLOOD ELEVATION = N/A FINISHED FLOOR ELEVATION = N/A
BUILDING SQ. FT.
TOTAL BUILDING AREA = 20,545 SQ. FT.
PARKING REQUIREMENTS
104 REGULAR PARKING SPACES PROVIDED 4 HANDICAP PARKING SPACES PROVIDED TOTAL PARKING SPACES PROVIDED 108

DAMMON ENGINEERING, INC.
LOUISIANA & MISSISSIPPI

Chief Engineer: Brian Mistich, PE
554 Old Spanish Trail
Slidell, LA 70668
www.dammonengineering.com
info@dammonengineering.com
PH: 985.649.5832 F: 985.641.5950

#	DESCRIPTION	DATE



**NEW AUDITORIUM
POPE JOHN PAUL II
HIGH SCHOOL**

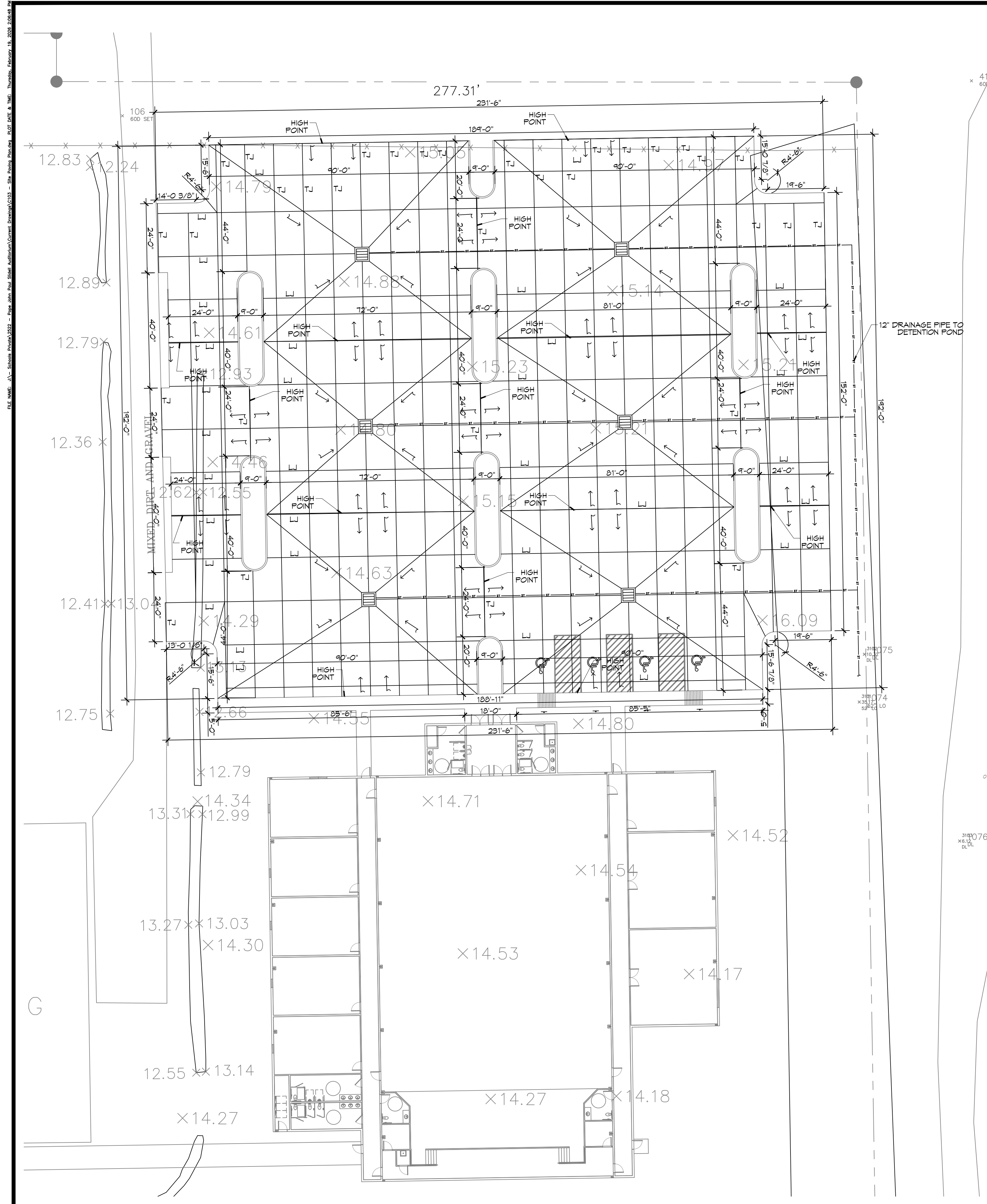
1921 JAGUAR DR
SLIDELL, LA 70461
JOB No: 2922 DATE: 02-19-2026
DRAWN BY: BAK CHECKED BY: CKD

SHEET TITLE:
PROPOSED SITE PLAN

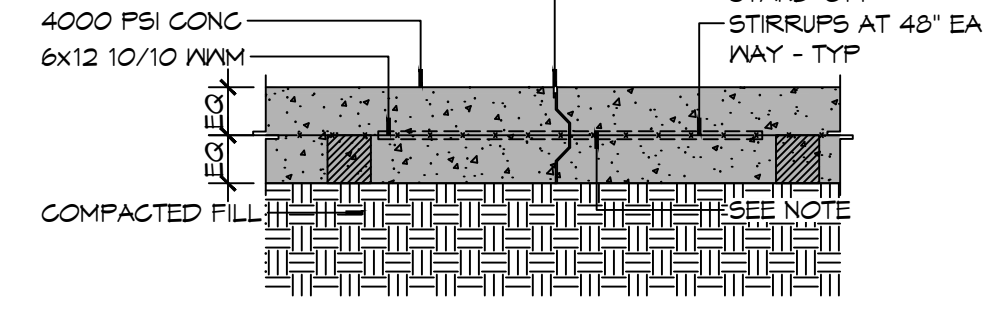
DRAWING NUMBER:
C101

SHEET No: 3 of 17

DESIGN EXCEPTION



6" MTL KEYWAY JOINT SYSTEM NOTE:
 LONGITUDINAL JOINTS (L): NO. 5 DEFORMED DOVEL ROD 24" L @ 24" O.C.
 TRANSVERSE JOINTS (T): NO. 5 SMOOTH DOVEL ROD 24" L @ 24" O.C.
 EXP MTL KEYWAY JOINT



TYPICAL PAVEMENT JOINT
PAVING DETAIL
 SCALE: 1" = 1'-0"

GENERAL PAVING NOTES

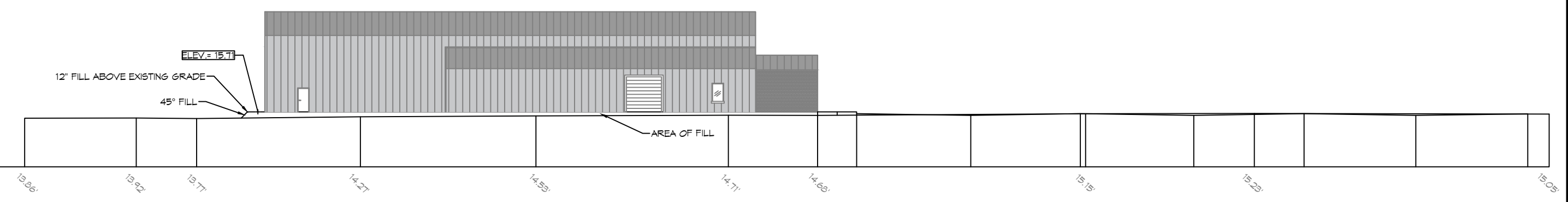
- ALL NEW CONCRETE SHALL HAVE A MINIMUM COMPRESSIVE STRENGTH OF 4,000 PSI AT 28 DAYS AND A MINIMUM THICKNESS OF 6". CONCRETE MIX SHALL BE IN ACCORDANCE WITH THE LATEST REVISION OF ASTM C-150 TYPE 1.
- CONCRETE PAVING THICKNESS SHALL VARY AS FOLLOWS:
 - APRONS & LOADING AREAS = 8" THICKNESS (INDICATED WITH CROSS HATCH WHERE OCCURS)
 - DRIVE LANES & PARKING AREAS = 6" THICKNESS (STANDARD UNO)
- ALL REINFORCING STEEL SHALL MEET ASTM-A615 (GRADE 60).
- ALL REINFORCING STEEL SHALL BE SECURELY SUPPORTED TO PREVENT BOTH VERTICAL AND HORIZONTAL MOVEMENT DURING CONCRETE PLACEMENT. ALL CONTROL AND EXPANSION JOINTS SHALL BE LOCATED AND INSTALLED AS SHOWN ON THE PAVING PLAN AND IN ACCORDANCE WITH THE MANUFACTURER'S RECOMMENDATIONS.
- ALL SUB GRADE FILL SHALL BE SELECT GRANULAR MATERIAL COMPACTED TO 95% STANDARD PROCTOR DENSITY IN A MAXIMUM OF 6" LIFTS.
- ANY WORK WITHIN THE ROADWAY OR ADJACENT TO THE ROADWAY CAUSING AN INTERFERENCE TO VEHICULAR TRAFFIC MUST CONFORM TO THE REQUIREMENTS SET FORTH BY THE UNIFORM TRAFFIC MANUAL OF TRAFFIC CONTROL DEVICES OF THE STATE OF LOUISIANA. THE CONTRACTOR MUST FURNISH ALL NECESSARY TRAFFIC SIGNS AND/OR BARRICADES AND MAINTAIN THEM DURING CONSTRUCTION ACTIVITY.

PAVING LEGEND

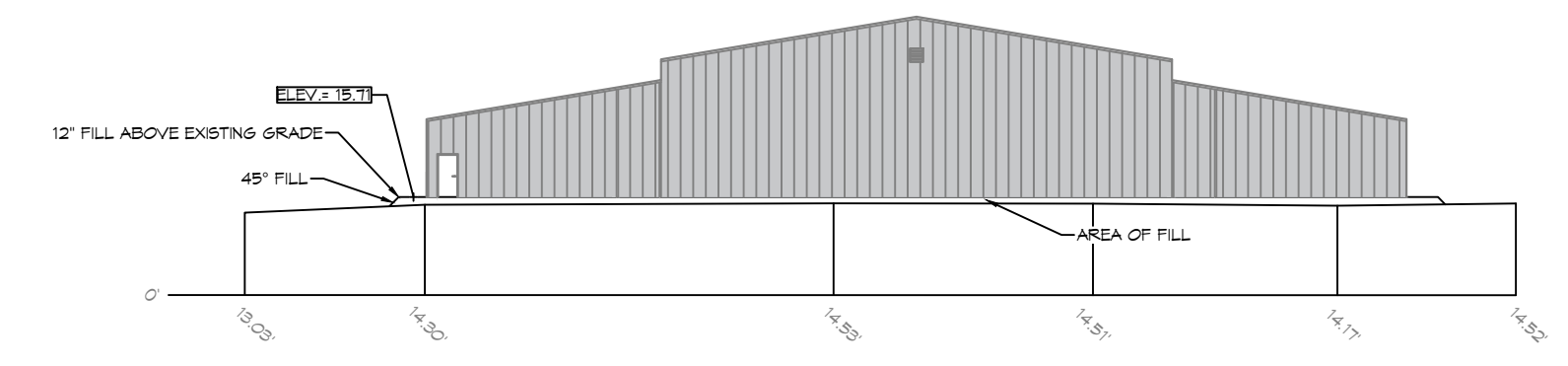
- TOP XXXX — TOP OF CONCRETE OR CURB ELEVATION
- TOP XXXX — TOP OF GRATE ELEVATION
- INV XXXXX — INVERT OF PIPE ELEVATION
- L — LONGITUDINAL JOINTS (L) = NO. 5 DEFORMED DOVEL RODS 24" LONG @ 24" O.C.
- T — TRANSVERSE JOINTS (T) = NO. 5 SMOOTH DOVEL RODS 24" LONG @ 24" O.C.
- PARKING WHEEL STOP
- NEW CATCH BASIN
- XXXX.00 EXISTING TOPO
- XXXX.00 NEW TOPO

DAMMON ENGINEERING, INC.
 LOUISIANA & MISSISSIPPI
 Chief Engineer: Brian Mistich, PE
 www.dammonengineering.com
 info@dammonengineering.com
 554 Old Spanish Trail
 Slidell, LA 70468
 PH: 985.649.5832 F: 985.641.9950

#	DESCRIPTION	DATE

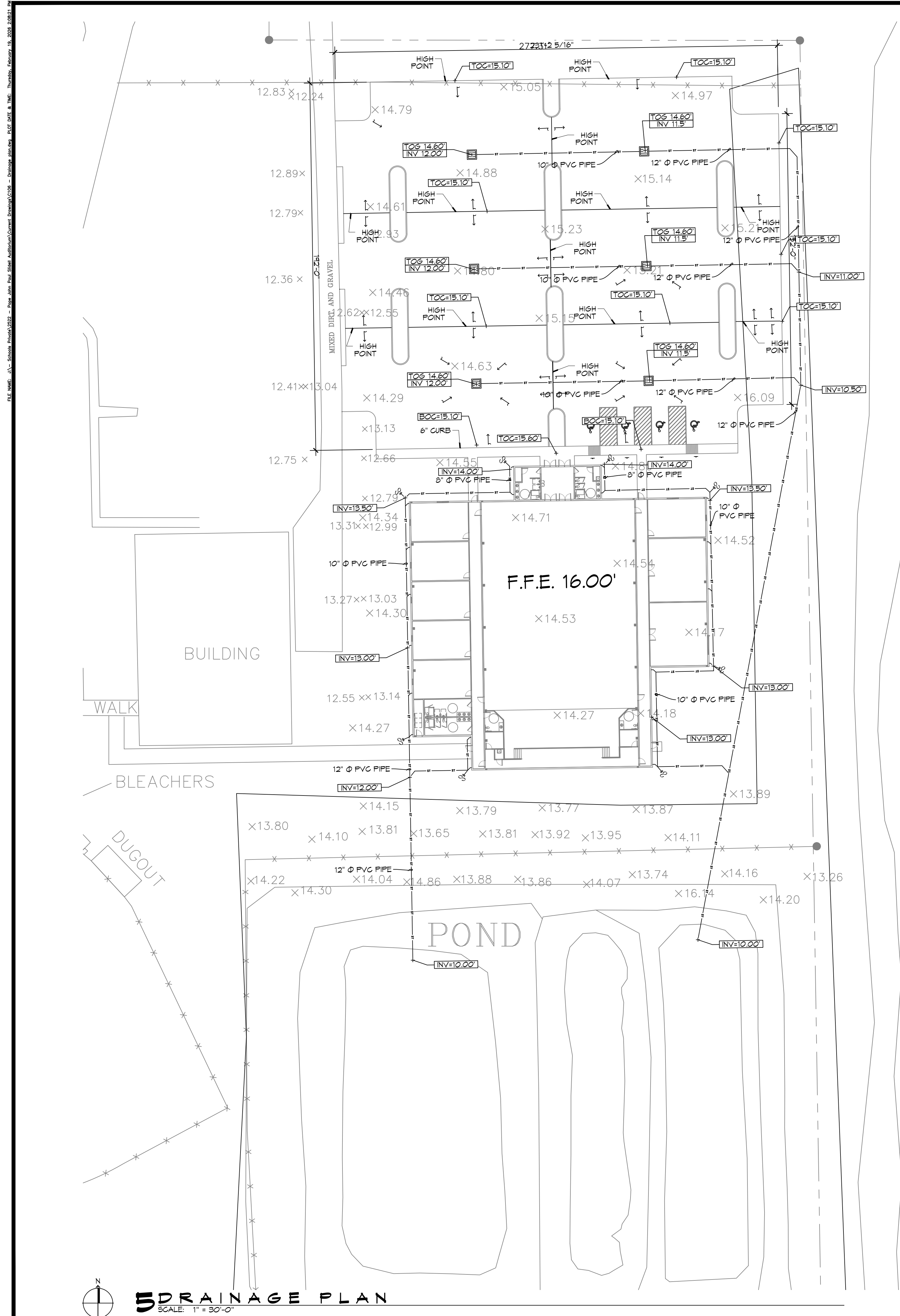


CROSS SECTION
 SCALE: 1" = 30'-0"



CROSS SECTION
 SCALE: 1" = 30'-0"

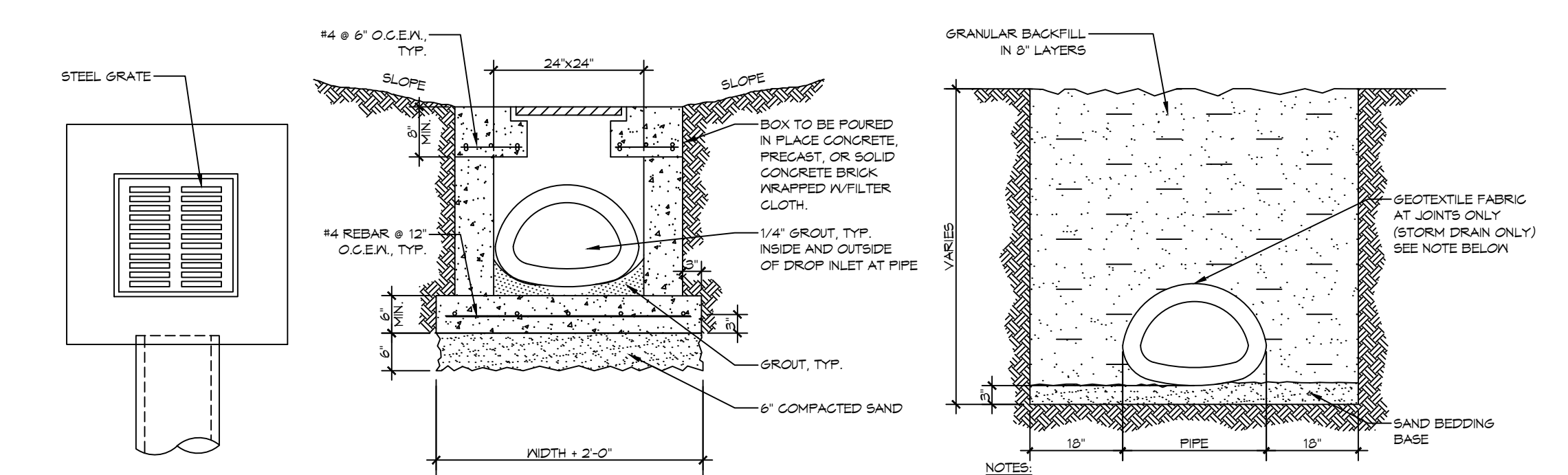
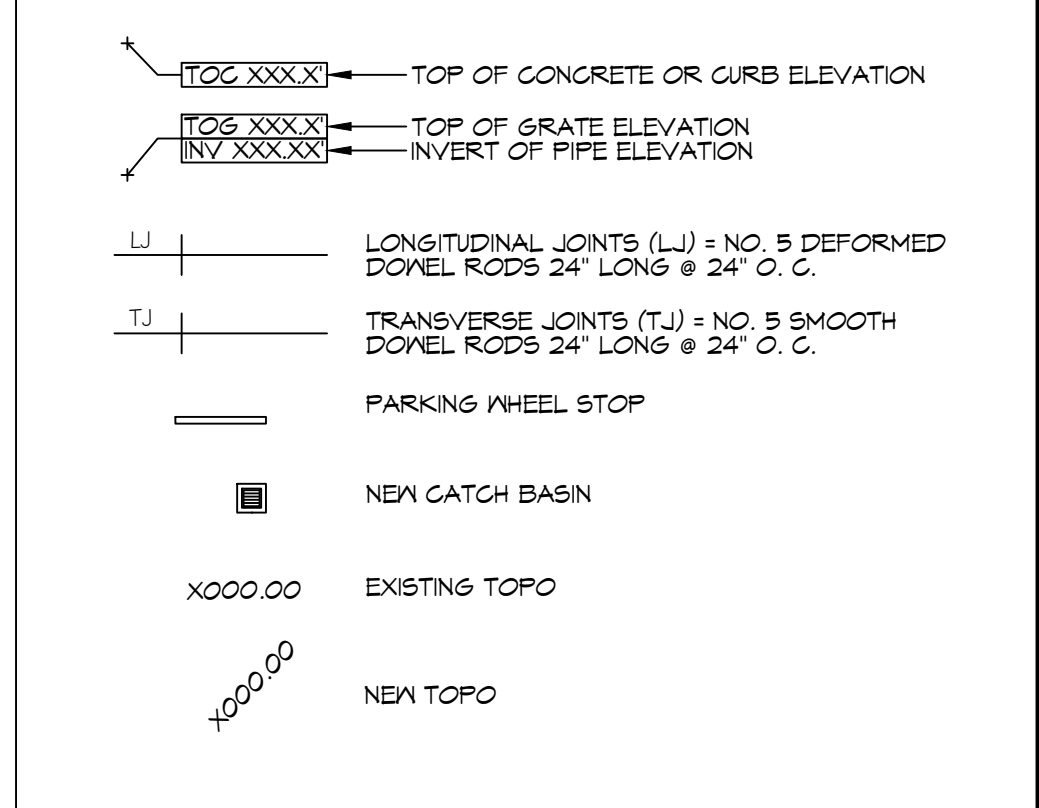
**NEW AUDITORIUM
 POPE JOHN PAUL II
 HIGH SCHOOL**
 1901 JAGUAS DR
 SLIDELL, LA 70461
 JOB No: 2522 DATE: 02-15-2026
 DRAWN BY: CKD CHECKED BY: BAW
 SHEET TITLE: PAVING PLAN
 DRAWING NUMBER: **C103**
 SHEET No: 5 of 17



GENERAL PAVING NOTES

- ALL NEW CONCRETE SHALL HAVE A MINIMUM COMPRESSIVE STRENGTH OF 4,000 PSI AT 28 DAYS AND A MINIMUM THICKNESS OF 6". CONCRETE MIX SHALL BE IN ACCORDANCE WITH THE LATEST REVISION OF ASTM C-150 TYPE 1.
- CONCRETE PAVING THICKNESS SHALL VARY AS FOLLOWS:
 - APRONS & LOADING AREAS = 8" THICKNESS (INDICATED WITH CROSS HATCH WHERE OCCURS)
 - DRIVE LANES & PARKING AREAS = 6" THICKNESS (STANDARD UNO)
- ALL REINFORCING STEEL SHALL MEET ASTM-A615 (GRADE 60).
- ALL REINFORCING STEEL SHALL BE SECURELY SUPPORTED TO PREVENT BOTH VERTICAL AND HORIZONTAL MOVEMENT DURING CONCRETE PLACEMENT. ALL CONTROL AND EXPANSION JOINTS SHALL BE LOCATED AND INSTALLED AS SHOWN ON THE PAVING PLAN AND IN ACCORDANCE WITH THE MANUFACTURER'S RECOMMENDATIONS.
- ALL SUB GRADE FILL SHALL BE SELECT GRANULAR MATERIAL COMPACTED TO 95% STANDARD PROCTOR DENSITY IN A MAXIMUM OF 6" LIFTS.
- ANY WORK WITHIN THE ROADWAY OR ADJACENT TO THE ROADWAY CAUSING AN INTERFERENCE TO VEHICULAR TRAFFIC MUST CONFORM TO THE REQUIREMENTS SET FORTH BY THE UNIFORM MANUAL OF TRAFFIC CONTROL DEVICES OF THE STATE OF LOUISIANA. THE CONTRACTOR MUST FURNISH ALL NECESSARY TRAFFIC SIGNS AND/OR BARRICADES AND MAINTAIN THEM DURING CONSTRUCTION ACTIVITY.

PAVING LEGEND



TYPICAL DROP INLET
SCALE: NTS

NO ADVERSE IMPACT TO ADJACENT PROPERTIES

AREA RESULTS IN A NEGLIGIBLE CHANGE FROM THE EXISTING RUNOFF COEFFICIENT (C) AND RATE OF RUNOFF AND DRAINAGE PATTERNS ARE TO REMAIN THE SAME.

DESIGN EXCEPTION

DAMMON ENGINEERING, INC.
LOUISIANA & MISSISSIPPI
Chief Engineer: Brian A. Mistich, PE
www.dammonengineering.com
info@dammonengineering.com
554 Old Spanish Trail
Slidell, LA 70468
PH: 985.649.5832 F: 985.641.9950

#	DESCRIPTION	DATE



NEW AUDITORIUM
POPE JOHN PAUL HIGH SCHOOL

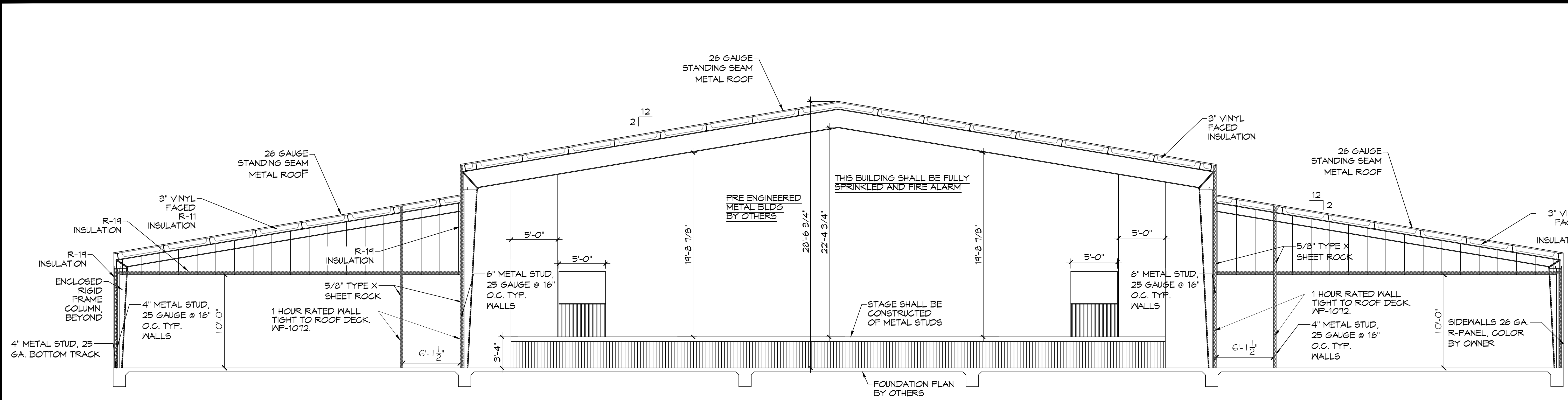
1901 JAGUAS DR
SLIDELL, LA 70461

JOB No: 2522 DATE: 02-15-2026
DRAWN BY: CCK CHECKED BY: BAK

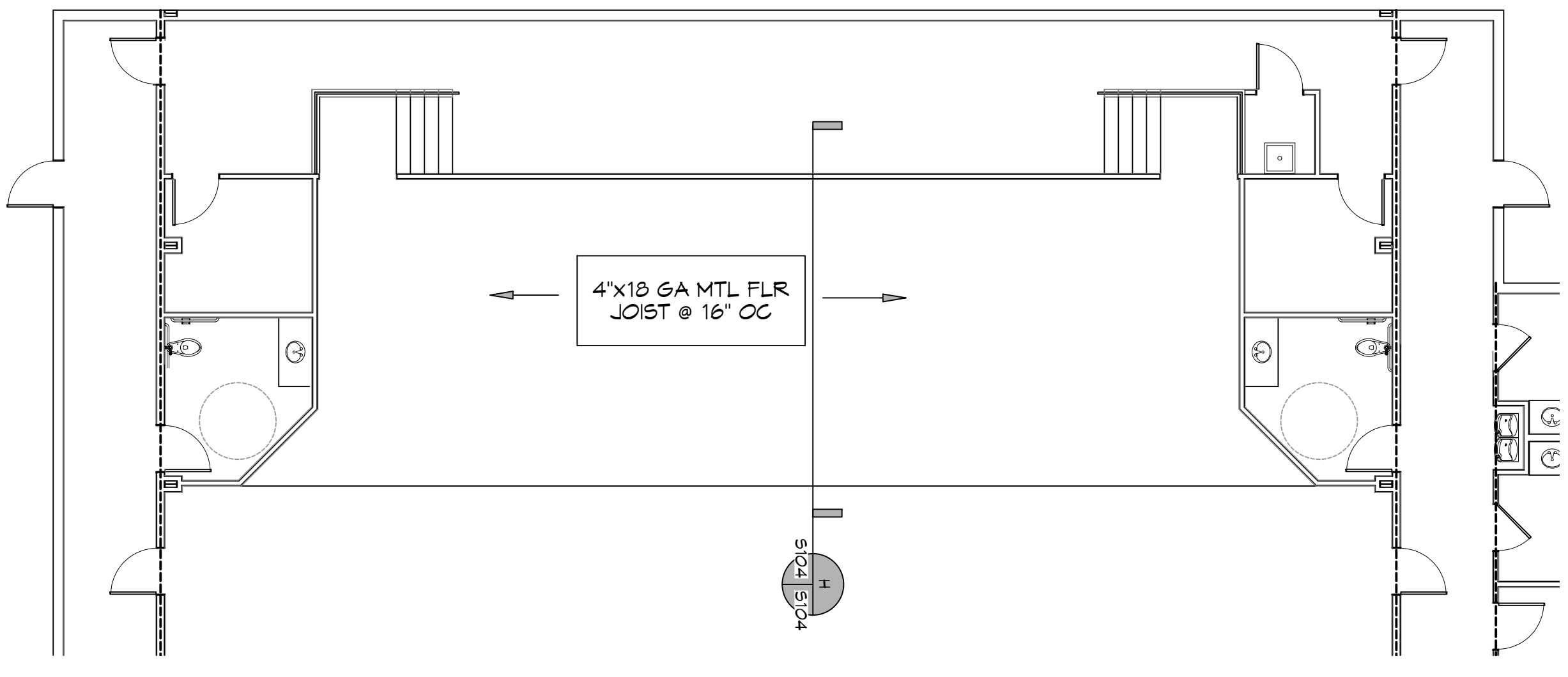
SHEET TITLE:
PAVING PLAN

DRAWING NUMBER:
C105

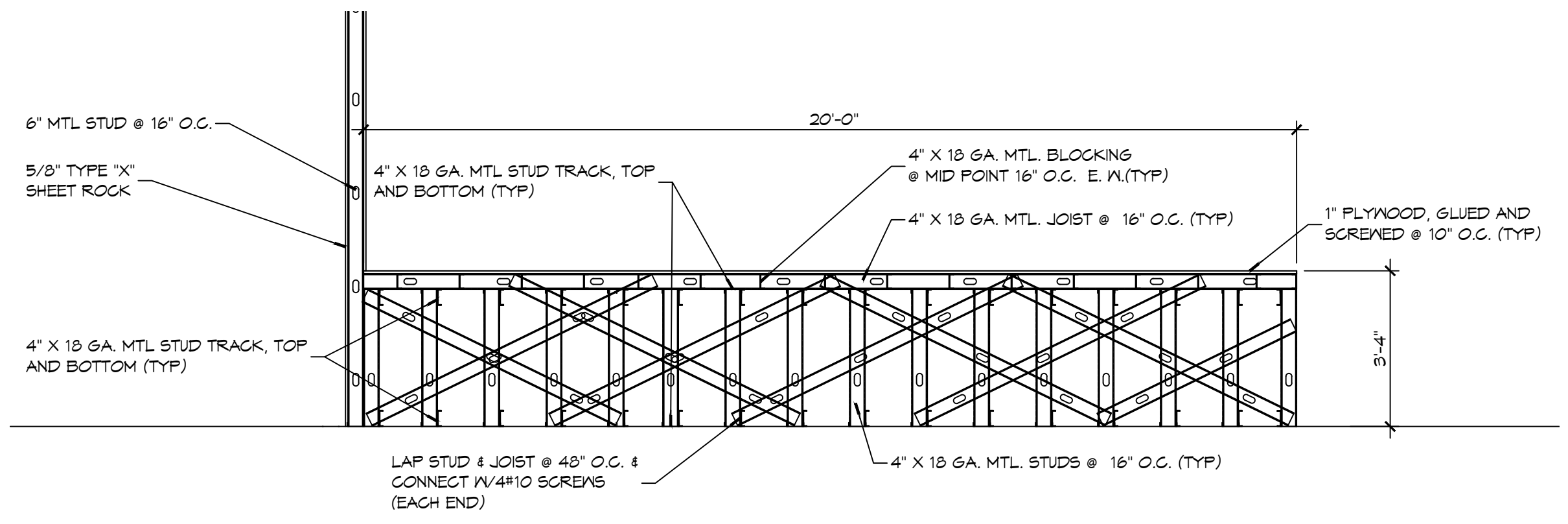
SHEET No: 5 of 17



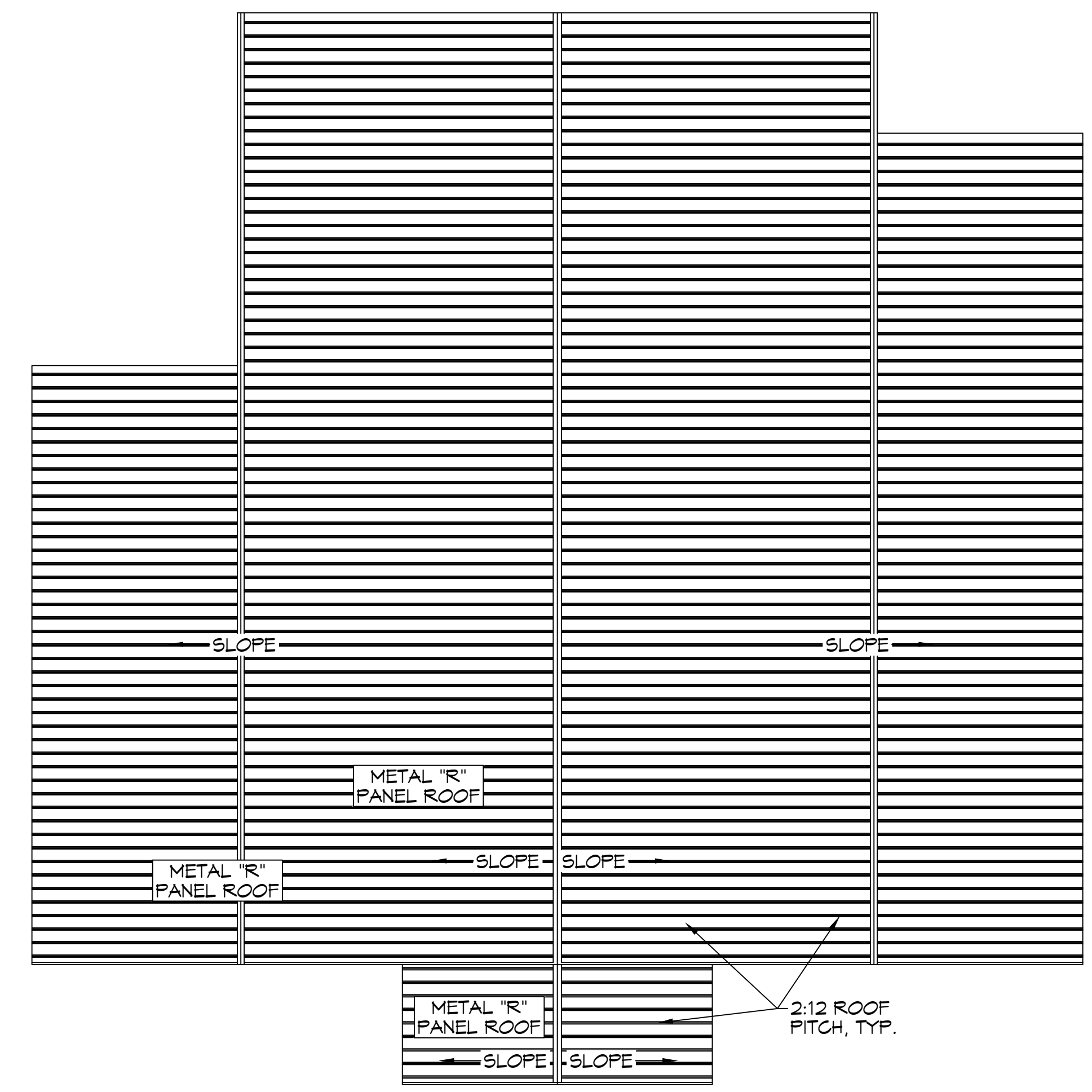
15 BUILDING SECTION
 SCALE: 3/16" = 1'-0"



16 STAGE PLAN
 SCALE: 1/8" = 1'-0"



15 STAGE SECTION
 SCALE: 3/8" = 1'-0"



16 ROOF PLAN
 SCALE: 1/16" = 1'-0"

DAMMON ENGINEERING, INC.
 LOUISIANA & MISSISSIPPI
 www.dammonengineering.com
 info@dammonengineering.com
 PH: 985.649.5832 F: 985.641.3908
 Chief Engineer: Brian Metch, PE
 554 Old Spanish Trail
 Slidell, LA 70458

REVISIONS	DATE	DESCRIPTION



NEW ORLEANS
 HIGH SCHOOL
 ADDITORIUM
 1401 JAGUARE DR
 SLIDELL, LA 70461
 JOB No: 2522 DATE: 02-19-2026
 DRAWN BY: CSD CHECKED BY: BANI

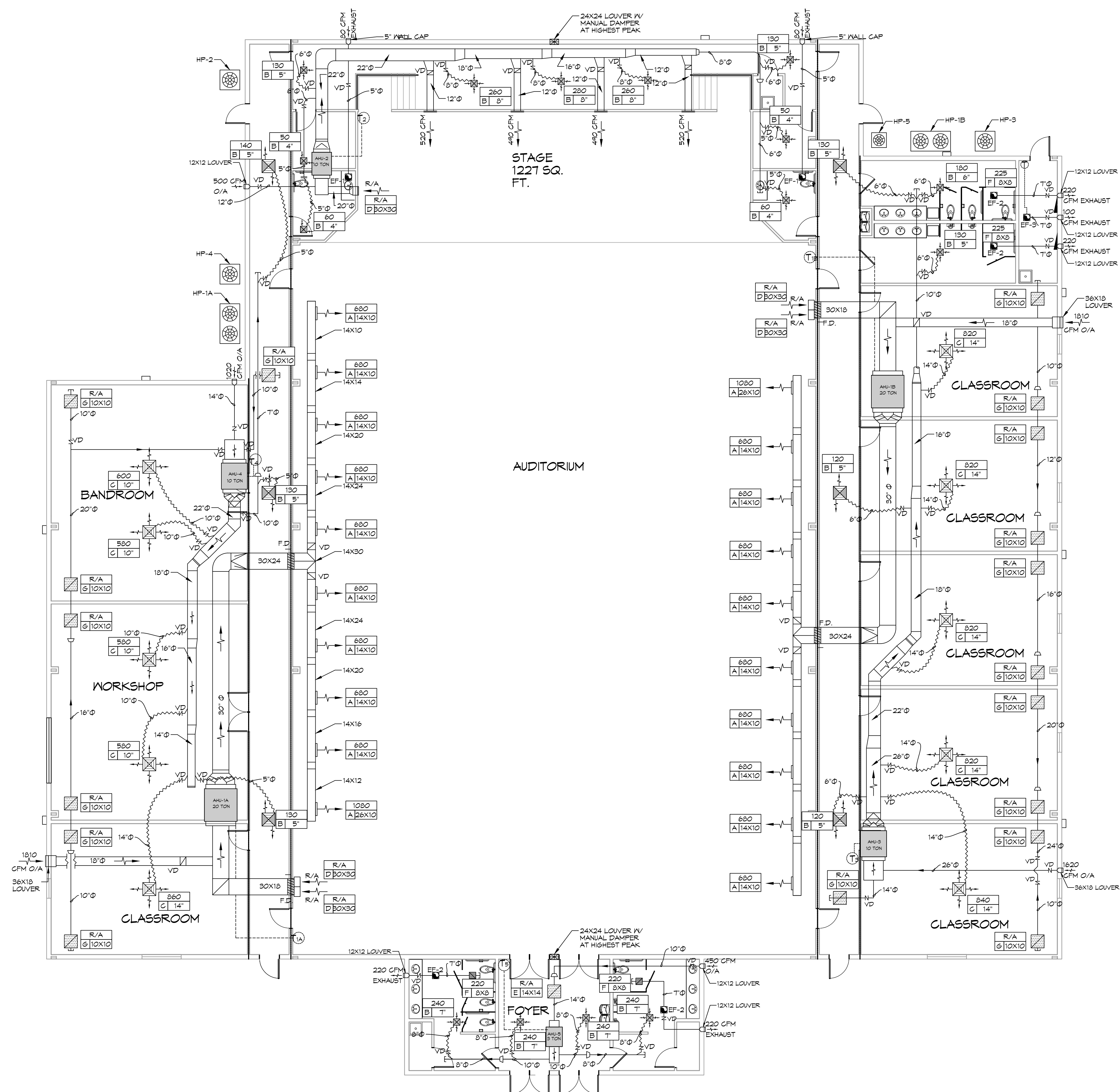
SHEET TITLE:
 BUILDING SECTION

DRAWING NUMBER:

A105

DESIGN EXCEPTION

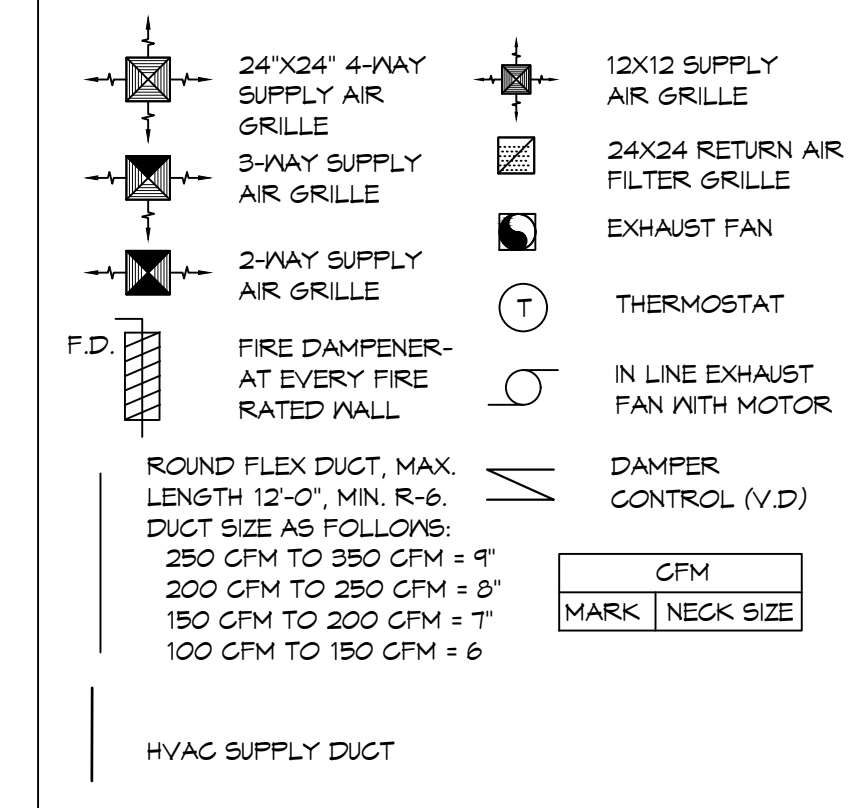
20 MECHANICAL PLAN
 SCALE: 1/4"=1'-0"
 1501 JAGUAR DRIVE
 SLIDELL, LA 70461
 JOB No: 2522
 DATE: 02-14-2026
 DRAWN BY: CKD
 CHECKED BY: BAK



GENERAL HVAC NOTES

1. CONCEALED DUCTWORK TO BE GALVANIZED SHEET METAL WRAPPED WITH FIBROUS GLASS DUCT WRAP WITH FSK VAPOR BARRIER, MIN R-6. INSTALLED PER SMACNA STANDARDS. DUCT WORK IMMEDIATELY DOWNSTREAM FROM RTU SHALL BE LINED FOR SOUND ATTENUATION.
2. EXPOSED DUCTWORK TO BE GALVANIZED SHEET METAL LINED WITH FIBROUS GLASS DUCT LINER, MIN R-6. INSTALLED PER SMACNA STANDARDS.
3. ROUND FLEXIBLE DUCT TO BE UL-181, CLASS 1, AIR DUCT MATERIALS.
4. DUCT SIZES SHOWN ARE CLEAR INSIDE DIMENSIONS.
5. IN ALL SYSTEMS OVER 2000 CFM AND LESS THAN 15,000 CFM, SMOKE DETECTORS SHALL BE INSTALLED IN ACCORDANCE WITH NFPA 72E IN THE RETURN DUCT DOWNSTREAM OF THE AIR HANDLING UNIT AND ALL FILTERS TO AUTOMATICALLY STOP THE FAN.
6. PROVIDE UL LISTED 125 F° FIRESTAT IN RETURN AIR OF EACH SYSTEM UNDER 2000 CFM TO SHUT DOWN THE FAN IN THE EVENT OF FIRE.
7. PROVIDE UL RATED FIRE DAMPERS WHERE REQUIRED AT ALL DUCT PENETRATIONS OF FIRE RATED ASSEMBLIES AND WHERE REQUIRED BY CODE, INCLUDING OUTSIDE AIR INTAKES AND EXHAUST FANS.
8. CONDENSATE DRAINS TO BE PVC PIPE RUN TO PLUMBERS P-TRAP WITHIN FIVE FEET OF AIR HANDLING UNITS.
9. ALL AIR HANDLING SYSTEMS TO BE BALANCED TO ASSURE PROPER AIR FLOWS PER PLANS.
10. ALL THERMOSTATS TO BE AUTOMATIC CHANGEOVER WITH HEAT SWITCH.
11. EXHAUST FAN SHALL BE CONTROLLED BY A SWITCH ON THE WALL IN THE SAME LOCATION AS LIGHT SWITCH(S). PROVIDE BACK DRAFT DAMPER.
12. PROVIDE AND INSTALL WATER PROOF GRILLE VENT IN PROPER ROOF LOCATION FOR PLUMBING FIXTURE EXHAUST.
13. ALL SUPPLY AIR VENTS SHALL BE EQUIPPED WITH AIR CONTROL DAMPERS AT THE REGISTER.
14. LOCATE OUTDOOR UNITS AS SHOWN ON ARCHITECTURAL DRAWINGS.
15. REFRIGERANT LINES SHALL BE SIZED BY UNIT MANUFACTURER AND INSTALLED ACCORDING TO MANUFACTURER'S INSTRUCTIONS.
16. FRESH AIR SHALL BE SUPPLIED TO EACH AIR HANDLER THROUGH EXTERIOR WALL DUCT SUPPLIED WITH A CONTROL DAMPER.
17. ALL ELECTRICAL, MECHANICAL, AND PLUMBING PENETRATING FIRE WALLS SHALL BE FIRE CAULKED. PENETRATIONS THROUGH RATED CONSTRUCTION SHALL BE SEALED WITH A MATERIAL CAPABLE OF PREVENTING THE PASSAGE OF FLAMES AND HOT GASES WHEN TESTED IN ACCORDANCE WITH ASTM-E8-14).
18. ALL MECHANICAL SYMBOLS ARE DRAWN DIAGRAMMATICALLY. CONTRACTOR TO VERIFY WITH OWNER LOCATIONS OF VENTS, DAMPERS, REGISTERS, ETC.
19. FLEXIBLE DUCTWORK LENGTH NOT TO EXCEED 12'-0". SUPPORT FLEX DUCT TO PREVENT SAGGING.
20. REFER TO REFLECTED CEILING PLAN FOR FINAL GRILLE AND DIFFUSER LOCATIONS AND COORDINATE AS REQUIRED.
21. FINAL LOCATION OF TEMPERATURE CONTROLS TO BE COORDINATED WITH OWNER AT JOB SITE.
22. PROVIDE AND INSTALL SMOKE DETECTORS AS APPROVED BY LOCAL AHJ'S. PLACE NEAR R/A AND S/A OPENINGS OF AHU AND PROVIDE WITH ACCESS PANEL, WIRING BY ELECTRICAL CONTRACTOR.
23. FRESH AIR INTAKES ARE REQUIRED TO HAVE MOTORIZED OR GRAVITY DAMPERS TO SHUT OFF WHEN SYSTEM IS NOT RUNNING.
24. PROVIDE BIRD SCREENS AT ALL EXTERIOR MECHANICAL PENETRATIONS.
25. COORDINATE WALL MOUNTED THERMOSTAT LOCATIONS WITH ALL OWNER FURNISHED ITEMS EITHER WALL MOUNTED OR FLOOR MOUNTED AGAINST PARTITIONS. REFER TO ARCHITECTURAL DRAWINGS.
26. SEE ROOF PLAN FOR ALL ROOF PENETRATIONS.
27. PROVIDE MIN 18 GA GALVANIZED SHEET METAL TO BLANK-OFF GABLE VENTS WHERE INTAKE/EXHAUST DUCTS OCCUR.

MECHANICAL LEGEND



DAMMON ENGINEERING, INC.
 LOUISIANA & MISSISSIPPI
 Chief Engineer: Brian Mistich, PE
 554 Old Spanish Trail
 Slidell, LA 70458
 www.dammonengineering.com
 info@dammonengineering.com
 PH: 985.649.5832 F: 985.641.5950

#	DESCRIPTION	DATE



**NEW AUDITORIUM
 POPE JOHN PAUL
 HIGH SCHOOL**
 1501 JAGUAR DRIVE
 SLIDELL, LA 70461
 JOB No: 2522
 DATE: 02-14-2026
 DRAWN BY: CKD
 CHECKED BY: BAK

SHEET TITLE:
 MECHANICAL PLAN
 DRAWING NUMBER:
M101
 SHEET No: 13 of 17

Symbol	Label	Qty	Arrangement	Manufacturer & Part Number	LLF	Lum. Lumens
⊙	A1	19	SINGLE	JADEMAR - JPHBS-CPS-240W-1PD-100D-BK w/ PC Refractor (Set at 180Watt)	0.150	19724
⊙	A1E	8	SINGLE	JADEMAR - JPHBS-CPS-240W-1PD-100D-BK-JEMBBU-25W w/ PC Refractor (Set at 180Watt)	0.150	19724
⊙	B1	50	SINGLE	PORTOR - PT-TRO2-24-3CP (Set at 45Watt)	0.350	6190
⊙	B1E	15	SINGLE	PORTOR - PT-TRO2-24-3CP-PT-EM1-15W (Set at 45Watt)	0.350	6190
⊙	C1	8	SINGLE	PORTOR - PT-BLP-HO-24-67-5C4P (Set at 67Watt)	0.950	10433
⊙	C1E	1	SINGLE	PORTOR - PT-BLP-HO-24-67-5C4P-PT-EMA-8W (Set at 67Watt)	0.114	10433
⊙	D1	1	SINGLE	PORTOR - PT-BLP-24-40-3CP-9 (Set at 40Watt)	0.950	5355
⊙	D1E	1	SINGLE	PORTOR - PT-BLP-24-40-3CP-9-PT-EMA-8W (Set at 40Watt)	0.210	5355
⊙	F1	21	SINGLE	SOLAIS - BDLR6-1-PW-PW-WFL-940-1500-UNV	0.710	1715
⊙	F1E	8	SINGLE	SOLAIS - BDLR6-1-PWEM-PW-WFL-940-1500-UNV-EM	0.710	1715
⊙	G1	18	SINGLE	BROWNLIEE - 5165-24-H13-40K	0.950	1663
⊙	S1	2	SINGLE	BROWNLIEE - 7110-49-H32-40K	0.950	3757
⊙	S1E	1	SINGLE	BROWNLIEE - 7110-49-H32-40K-BB1	0.310	3757
⊙	WP1	8	SINGLE	PORTOR - PT-WPF-60-3CPB (Set at 40Watt)	0.950	5706
⊙	WP1E	4	SINGLE	PORTOR - PT-WPF-60-3CPBPT-EMN-15W-155 (Set at 40Watt)	0.395	5706

24 LUMINAIRE SCHEDULE

SCALE: NTS

SensorWorx Digital (SWD)			
Description	Quantity	Unit	Comments
SWD-203	8	Count	Digital High Bay 360° Ceiling Sensor - PIR
SWD-804-XX	2	Count	Digital 1-Zone Dimmer Wall Station (On/Off/Raise/Lower)
SWD-900-D1	1	Count	Digital Zone Controller, 120-277 VAC, 16A, 0-10V Dimming (Class 1 Dimming Wires)
SWX-121-XX	2	Count	Wall Switch Sensor, Dual Tech, Auto On
SWX-122-XX	2	Count	Wall Switch Sensor, Dual Tech, 2 Pole, Partial On with Sidecar Kit, Line Voltage
SWX-222-1	26	Count	Ceiling Sensor, Dual Tech, Large Motion 360°, Low Voltage
SWX-801-XX	15	Count	Momentary Wall Switch, Low Voltage
SWX-803-XX	8	Count	Dimming Wall Switch, Low Voltage, 0-10V
SWX-900-AX	21	Count	Power Pack, 16A, 120/277VAC, Auxiliary Switch Input
SWX-EPC-A-2-D	17	Count	Emergency Power + 0-10V Dimming Control, Chase Nipple Mounted
SWX-LCS624D	1	COUNT	Outdoor Photocontrol (Controls Square-D Lighting contactor through SWX-900-AX)

25 SENSOR SCHEDULE

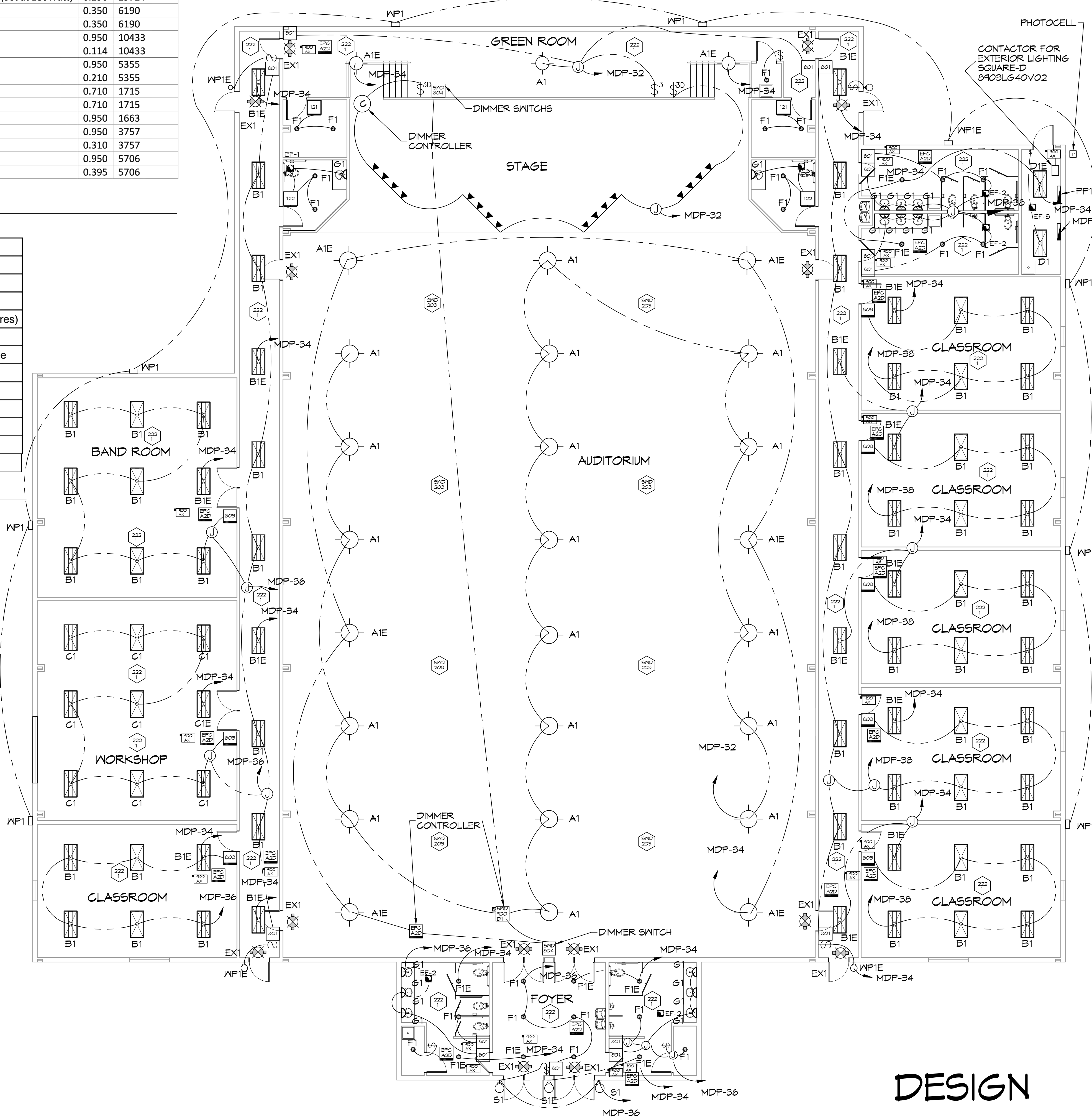
SCALE: NTS

GENERAL LIGHTING NOTES

- ALL WORK SHALL COMPLY WITH APPLICABLE NATIONAL, STATE, AND LOCAL CODES, RULES, REGULATIONS, AND REQUIREMENTS OF THE SERVICE UTILITY COMPANY.
- REFER TO ARCHITECTURAL DRAWINGS FOR EXACT LOCATION AND MOUNTING INSTRUCTIONS FOR ALL LIGHT FIXTURES. NOTIFY THE ARCHITECT AND ENGINEER OF ANY DISCREPANCIES BETWEEN THESE PLANS AND THE ARCHITECTURAL PLANS RELATING TO QUANTITY, TYPE AND LOCATION OF DEVICES AND/OR FIXTURES.
- WHEN SPECIFIC LIGHT FIXTURE HAS BEEN SPECIFIED IN THE FIXTURE SCHEDULE, ELECTRICAL SHALL PROVIDE COMPLETE ASSEMBLY INCLUSIVE ALL PARTS AND HARDWARE TO INSURE PROPER FUNCTIONING FIXTURE.
- ALL CONDUCTORS SHALL BE #12 AWG UNLESS NOTED OTHERWISE.
- ALL 120V RUNS LONGER THAN 60 FEET SHALL BE #10 AWG AND 277V RUNS LONGER THAN 150 FEET SHALL BE #10 AWG UNLESS NOTED OTHERWISE.
- ALL CONDUCTORS SHALL BE COPPER.
- WHERE CONDUCTOR SIZES ARE NOTED ON DRAWINGS, THAT WIRE SIZE SHALL BE THROUGH THE ENTIRE RUN UNLESS OTHERWISE NOTED.
- MOUNTED LIGHT SWITCHES 48" AFF UNLESS NOTED OTHERWISE ON ARCHITECTURAL DRAWINGS.
- ALL GANGED SWITCHES SHALL HAVE A COMMON SEAMLESS FACEPLATE. EACH MULTI-GANGED BOX SHALL BE NO MORE THAN SIX (6) SWITCHES WIDE. WHERE MORE THAN SIX (6) SWITCHES ARE SHOWN AT ONE (1) LOCATION, ADDITIONAL MULTI-GANGED BOXES SHALL BE STACKED VERTICALLY AND THE WIDTH OF THE MULTI-GANGS SHALL BE AS EVEN AS POSSIBLE.
- EACH DIMMER SWITCH SHALL HAVE A WATTING RATING 25% HIGHER THAN THE TOTAL WATTAGE OF ALL LIGHTS TO BE CONTROLLED BY THE DIMMER. DIMMER SIZES 600, 1000, 1500, AND 2000 WATTS, LUTRON NOVA T-STAR. WHERE SWITCHES ARE GANGED WITH DIMMERS, THE SWITCHES SHALL ALSO BE LUTRON NOVA T-STAR. FLUORESCENT AND LOW VOLTAGE DIMMERS HAL LBE LUTRON NOVA T-STAR.
- WHERE FLUORESCENT FIXTURES ARE SHOWN TO BE DIMMED, THE FIXTURES SHALL HAVE DIMMING TYPE BALLASTS WHICH ARE COMPATIBLE WITH THE SPECIFIED DIMMERS.
- WHERE LED FIXTURES/LAMPS ARE SHOWN TO BE DIMMED, THE DIMMER SHALL BE COMPATIBLE WITH THE FIXTURE/LAMP SPECIFIED OR PROVIDED.
- ALL EMERGENCY LIGHT FIXTURES SHALL HAVE 90 MINUTE BATTERY BACKUP WITH INTEGRAL TEST BUTTON AND SHALL BURN CONTINUOUSLY.
- ALL FLUORESCENT FIXTURES THAT UTILIZE DOUBLE-ENDED LAMPS AND CONTAIN BALLASTS SHALL BE PROVIDED WITH A DISCONNECTING MEANS IN ACCORDANCE WITH NEC 410.136.

LIGHTING LEGEND

EF?	EXHAUST FAN - 480V
WP1	EXTERIOR WEATHERPROOF WALL MOUNTED LIGHT IV 90 MIN. BATTERY BACKUP - 100W
WP2	EXTERIOR WEATHERPROOF CAN LIGHT - 90W
TR1	DIRECTIONAL TRACK STAGE LIGHTING 400W PER FIXTURE - 1200W TOTAL
EX1	EMERGENCY EXIT LIGHT IV 90 MIN. BATTERY BACKUP - 12W
☐	PHOTOCELL DAYLIGHT SENSOR
⊕	LIGHT SWITCH, 277V
⊕ ₃	LIGHT SWITCH, 3 WAY, 277V
⊕ ₃ D	LIGHT SWITCH, 3 WAY, DIMMER, 277V
⊙	JUNCTION BOX



23 LIGHTING PLAN

SCALE: 1/8"=1'-0"

DAMMON ENGINEERING, INC.
LOUISIANA & MISSISSIPPI
www.dammonengineering.com
info@dammonengineering.com
554 Old Spanish Trail
Slidell, LA 70458
Chief Engineer: Brian Mistich, PE
514 Old Spanish Trail
Slidell, LA 70458

#	DESCRIPTION	DATE



NEW AUDITORIUM
PHOENIX HIGH SCHOOL

1501 LA GRANGE DR.
SLIDELL, LA 70461
JOB No: 2522 DATE: 02-14-2026
DRAWN BY: BAKY CHECKED BY: CKD

SHEET TITLE:
LIGHTING PLAN

DRAWING NUMBER:
E102

SHEET No: 16 of 17

DESIGN EXCEPTION

