

Symbol	Label	Qty	Arrangement	Manufacturer & Part Number	LLF	Lum. Lumens
	A1	19	SINGLE	JADEMAR - JPHBS-CPS-240W-1PD-100D-BK w/ PC Refractor (Set at 180Watt)	0.150	19724
	A1E	8	SINGLE	JADEMAR - JPHBS-CPS-240W-1PD-100D-BK-JEMBBU-25W w/ PC Refractor (Set at 180Watt)	0.150	19724
	B1	50	SINGLE	PORTOR - PT-TRO2-24-3CP (Set at 45Watt)	0.350	6190
	B1E	15	SINGLE	PORTOR - PT-TRO2-24-3CP-PT-EM1-15W (Set at 45Watt)	0.350	6190
	C1	8	SINGLE	PORTOR - PT-BLP-HO-24-67-5C4P (Set at 67Watt)	0.950	10433
	C1E	1	SINGLE	PORTOR - PT-BLP-HO-24-67-5C4P-PT-EMA-8W (Set at 67Watt)	0.114	10433
	D1	1	SINGLE	PORTOR - PT-BLP-24-40-3CP-9 (Set at 40Watt)	0.950	5355
	D1E	1	SINGLE	PORTOR - PT-BLP-24-40-3CP-9-PT-EMA-8W (Set at 40Watt)	0.210	5355
	F1	21	SINGLE	SOLAIS - BDLR6-1-PW-PW-WFL-940-1500-UNV	0.710	1715
	F1E	8	SINGLE	SOLAIS - BDLR6-1-PWEM-PW-WFL-940-1500-UNV-EM	0.710	1715
	G1	18	SINGLE	BROWNLIEE - 5165-24-H13-40K	0.950	1663
	S1	2	SINGLE	BROWNLIEE - 7110-49-H32-40K	0.950	3757
	S1E	1	SINGLE	BROWNLIEE - 7110-49-H32-40K-BB1	0.310	3757
	WP1	8	SINGLE	PORTOR - PT-WPF-60-3CPB (Set at 40Watt)	0.950	5706
	WP1E	4	SINGLE	PORTOR - PT-WPF-60-3CPBPT-EMN-15W-155 (Set at 40Watt)	0.395	5706

## 24 LUMINAIRE SCHEDULE

SCALE: NTS

SensorWorx Digital (SWD)			
Description	Quantity	Unit	Comments
	8	Count	Digital High Bay 360° Ceiling Sensor - PIR
	2	Count	Digital 1-Zone Dimmer Wall Station (On/Off/Raise/Lower)
	1	Count	Digital Zone Controller, 120-277 VAC, 16A, 0-10V Dimming (Class 1 Dimming Wires)
	2	Count	Wall Switch Sensor, Dual Tech, Auto On
	2	Count	Wall Switch Sensor, Dual Tech, 2 Pole, Partial On with Sidecar Kit, Line Voltage
	26	Count	Ceiling Sensor, Dual Tech, Large Motion 360°, Low Voltage
	15	Count	Momentary Wall Switch, Low Voltage
	8	Count	Dimming Wall Switch, Low Voltage, 0-10V
	21	Count	Power Pack, 16A, 120/277VAC, Auxiliary Switch Input
	17	Count	Emergency Power + 0-10V Dimming Control, Chase Nipple Mounted
	1	COUNT	Outdoor Photocontrol (Controls Square-D Lighting contactor through SWX-900-AX)

## 25 SENSOR SCHEDULE

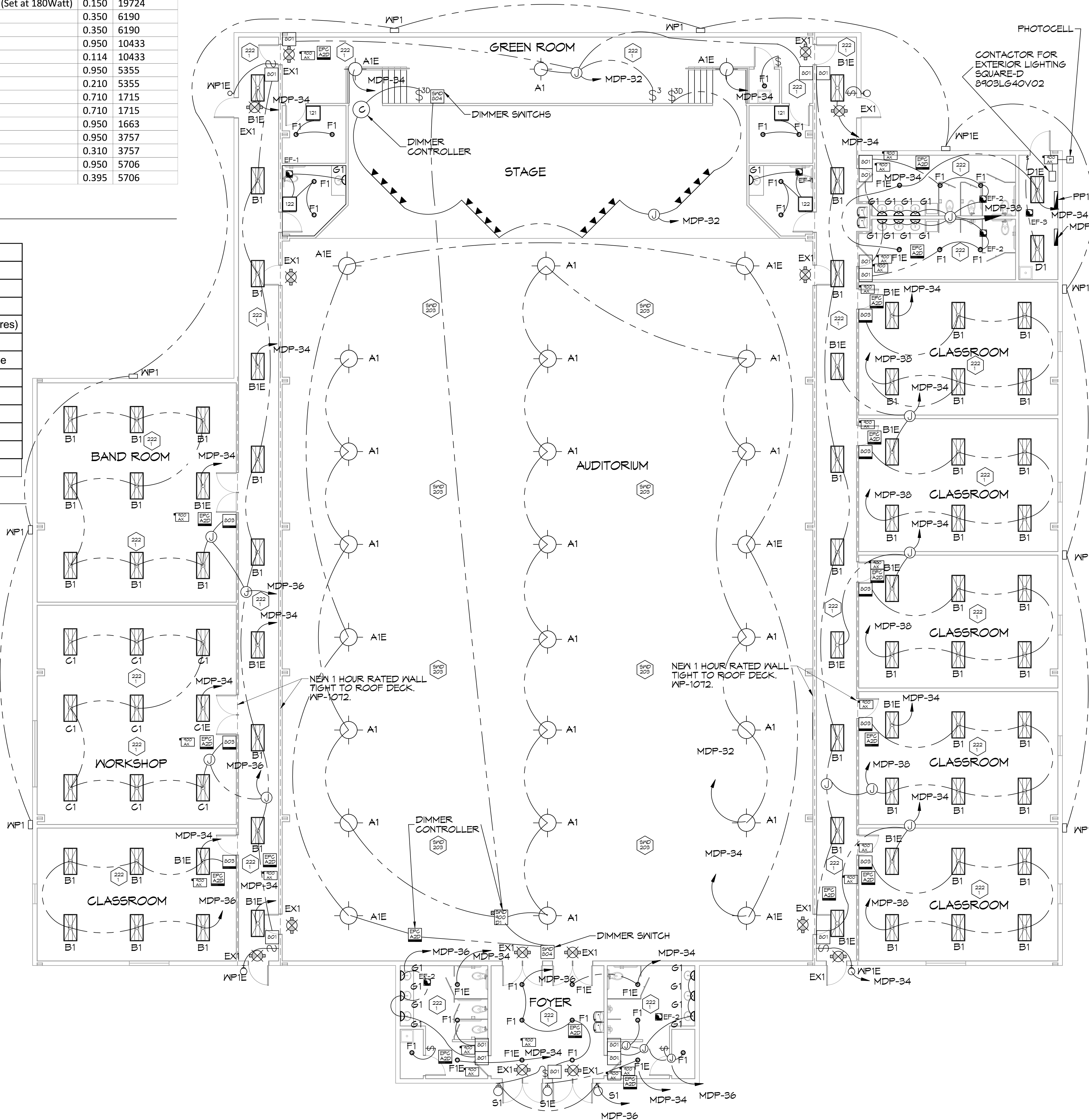
SCALE: NTS

## GENERAL LIGHTING NOTES

- ALL WORK SHALL COMPLY WITH APPLICABLE NATIONAL, STATE, AND LOCAL CODES, RULES, REGULATIONS, AND REQUIREMENTS OF THE SERVICE UTILITY COMPANY.
- REFER TO ARCHITECTURAL DRAWINGS FOR EXACT LOCATION AND MOUNTING INSTRUCTIONS FOR ALL LIGHT FIXTURES. NOTIFY THE ARCHITECT AND ENGINEER OF ANY DISCREPANCIES BETWEEN THESE PLANS AND THE ARCHITECTURAL PLANS RELATING TO QUANTITY, TYPE AND LOCATION OF DEVICES AND/OR FIXTURES.
- WHEN SPECIFIC LIGHT FIXTURE HAS BEEN SPECIFIED IN THE FIXTURE SCHEDULE, ELECTRICAL SHALL PROVIDE COMPLETE ASSEMBLY INCLUSIVE ALL PARTS AND HARDWARE TO INSURE PROPER FUNCTIONING FIXTURE.
- ALL CONDUCTORS SHALL BE #12 AWG UNLESS NOTED OTHERWISE.
- ALL 120V RUNS LONGER THAN 60 FEET SHALL BE #10 AWG AND 277V RUNS LONGER THAN 150 FEET SHALL BE #10 AWG UNLESS NOTED OTHERWISE.
- ALL CONDUCTORS SHALL BE COPPER.
- WHERE CONDUCTOR SIZES ARE NOTED ON DRAWINGS, THAT WIRE SIZE SHALL BE THROUGH THE ENTIRE RUN UNLESS OTHERWISE NOTED.
- MOUNTED LIGHT SWITCHES 48" AFF UNLESS NOTED OTHERWISE ON ARCHITECTURAL DRAWINGS.
- ALL GANGED SWITCHES SHALL HAVE A COMMON SEAMLESS FACEPLATE. EACH MULTI-GANGED BOX SHALL BE NO MORE THAN SIX (6) SWITCHES WIDE. WHERE MORE THAN SIX (6) SWITCHES ARE SHOWN AT ONE (1) LOCATION, ADDITIONAL MULTI-GANGED BOXES SHALL BE STACKED VERTICALLY AND THE WIDTH OF THE MULTI-GANGS SHALL BE AS EVEN AS POSSIBLE.
- EACH DIMMER SWITCH SHALL HAVE A WATTING RATING 25% HIGHER THAN THE TOTAL WATTAGE OF ALL LIGHTS TO BE CONTROLLED BY THE DIMMER. DIMMER SIZES 600, 1000, 1500, AND 2000 WATTS, LUTRON NOVA T-STAR. WHERE SWITCHES ARE GANGED WITH DIMMERS, THE SWITCHES SHALL ALSO BE LUTRON NOVA T-STAR. FLUORESCENT AND LOW VOLTAGE DIMMERS HAL LBE LUTRON NOVA T-STAR.
- WHERE FLUORESCENT FIXTURES ARE SHOWN TO BE DIMMED, THE FIXTURES SHALL HAVE DIMMING TYPE BALLASTS WHICH ARE COMPATIBLE WITH THE SPECIFIED DIMMERS.
- WHERE LED FIXTURES/LAMPS ARE SHOWN TO BE DIMMED, THE DIMMER SHALL BE COMPATIBLE WITH THE FIXTURE/LAMP SPECIFIED OR PROVIDED.
- ALL EMERGENCY LIGHT FIXTURES SHALL HAVE 90 MINUTE BATTERY BACKUP WITH INTEGRAL TEST BUTTON AND SHALL BURN CONTINUOUSLY.
- ALL FLUORESCENT FIXTURES THAT UTILIZE DOUBLE-ENDED LAMPS AND CONTAIN BALLASTS SHALL BE PROVIDED WITH A DISCONNECTING MEANS IN ACCORDANCE WITH NEC 410.136.

## LIGHTING LEGEND

EF?	EXHAUST FAN - 480V
WP1	EXTERIOR WEATHERPROOF WALL MOUNTED LIGHT IV 90 MIN. BATTERY BACKUP - 100W
WP2	EXTERIOR WEATHERPROOF CAN LIGHT - 90W
TR1	DIRECTIONAL TRACK STAGE LIGHTING 400W PER FIXTURE - 1200W TOTAL
EX1	EMERGENCY EXIT LIGHT IV 90 MIN. BATTERY BACKUP - 12W
	PHOTOCELL DAYLIGHT SENSOR
	LIGHT SWITCH, 277V
	LIGHT SWITCH, 3 WAY, 277V
	LIGHT SWITCH, 3 WAY, DIMMER, 277V
	JUNCTION BOX



## 23 LIGHTING PLAN

SCALE: 1/8"=1'-0"

**DAMMON ENGINEERING, INC.**  
 LOUISIANA & MISSISSIPPI  
 Chief Engineer: Brian Mischke, PE  
 554 Old Spanish Trail  
 Slidell, LA 70458  
 www.dammonengineering.com  
 info@dammonengineering.com  
 PH: 985.649.5832 F: 985.641.5950

#	DESCRIPTION	DATE

#	DESCRIPTION	DATE

NEW AUDITORIUM  
 POPE JOHN PAUL II  
 HIGH SCHOOL  
 1501 LA GRANGE DR.  
 SLIDELL, LA 70461  
 JOB No: 2522 DATE: 02-14-2026  
 DRAWN BY: BAKY CHECKED BY: CKD

SHEET TITLE:  
 LIGHTING PLAN  
 DRAWING NUMBER:  
**E102**  
 SHEET No: 16 of 17