

GENERAL NOTES

THE LOCATIONS OF UNDERGROUND UTILITIES AS SHOWN HEREON ARE BASED ON ABOVEGROUND STRUCTURES AND RECORD DRAWINGS PROVIDED THE SURVEYOR. LOCATIONS OF UNDERGROUND UTILITIES OR STRUCTURES MAY VARY FROM LOCATIONS SHOWN HEREON. ADDITIONAL BURIED UTILITIES OR STRUCTURES MAY BE ENCOUNTERED. NO EXCAVATIONS WERE MADE DURING THE PROGRESS OF THIS SURVEY TO LOCATE BURIED UTILITIES OR STRUCTURES.

I HAVE CONSULTED THE FLOOD INSURANCE RATE MAPS AND FOUND THIS PROPERTY IS NOT IN A SPECIAL FLOOD HAZARD AREA.
 F.I.R.M. COMMUNITY MAP NO. 220204-0010-0, DATED: 4/21/1999
 FLOOD ZONE: X; BASE FLOOD ELEVATION: 17.2

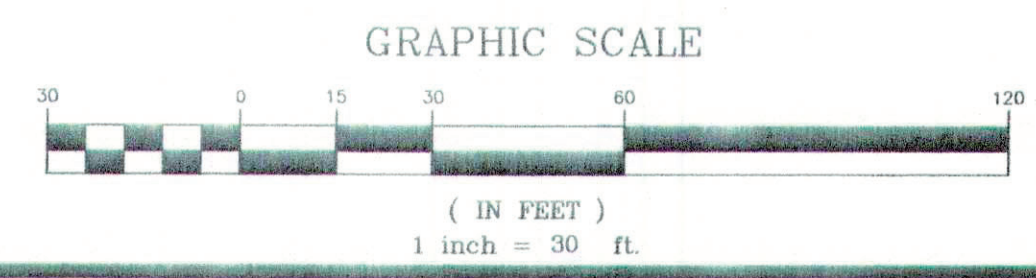
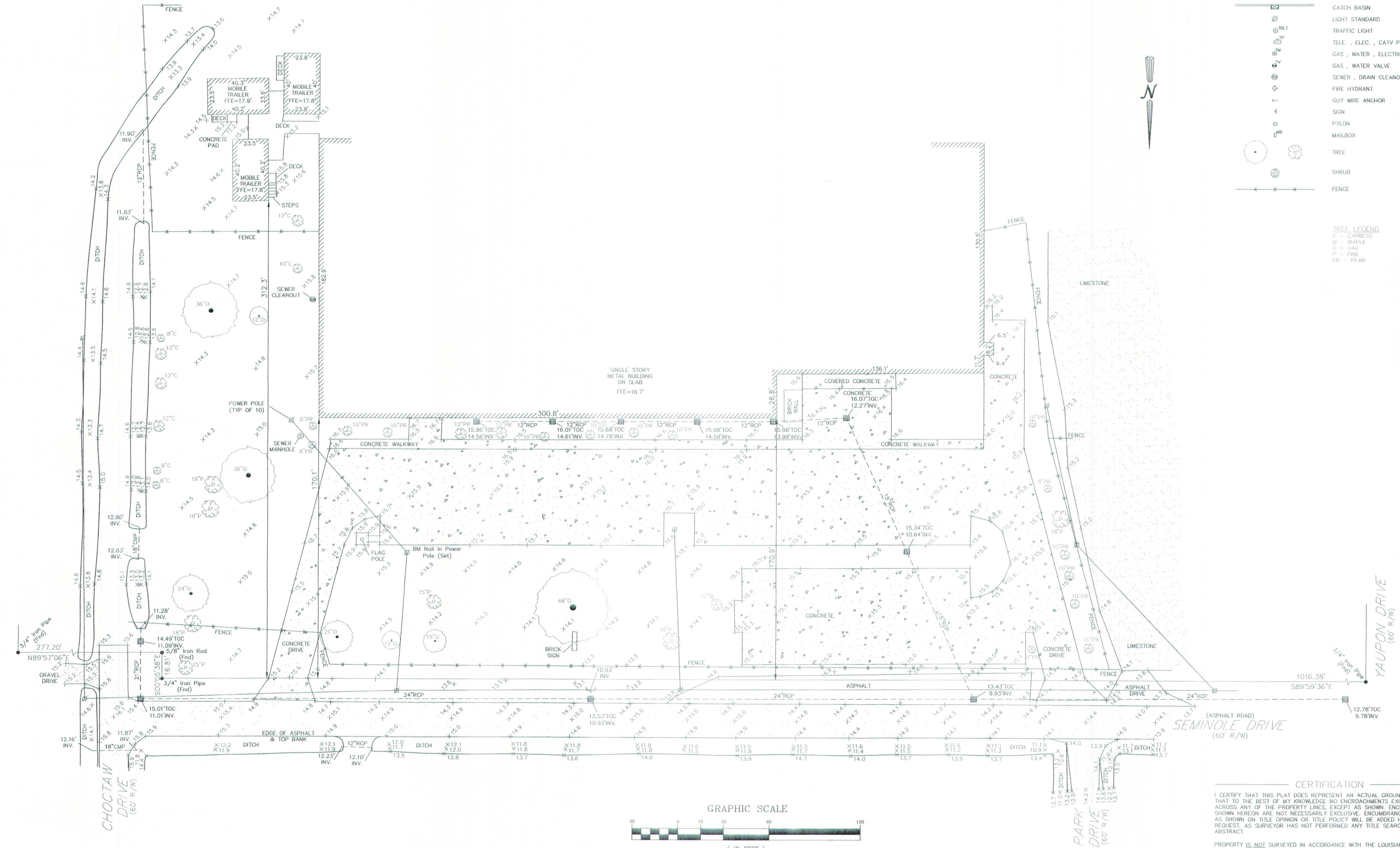
PUBLISHED B.M. = NAIL IN POWER POLE @ THE NORTHEASTER CORNER OF CONCRETE PARKING, TAG No. JVB 1102
 EL. 17.32'

LEGEND

- ⊙ S SEWER MANHOLE, SEWER LINE
- ⊙ W WATER MANHOLE, WATER LINE
- ⊙ G GAS MANHOLE, GAS LINE
- ⊙ T TELE. MANHOLE, TELE. LINE
- ⊙ D DRAIN MANHOLE, DRAIN LINE
- ⊙ DI DRAIN INLET, DRAIN LINE
- E T TV— POWER POLE / OVERHEAD LINES
ELECTRIC, TELEPHONE, CABLE TV
- E T TV— ELEC. TOWER / OVERHEAD LINES
- ⊠ CATCH BASIN
- ⊙ LIGHT STANDARD
- ⊙ TRAFFIC LIGHT
- ⊙ TELE., ELEC., CATV PEDESTAL
- ⊙ GAS, WATER, ELECTRIC METER
- ⊙ GAS, WATER VALVE
- ⊙ SEWER, DRAIN CLEANOUT
- ⊙ FIRE HYDRANT
- ⊙ GUY WIRE ANCHOR
- ⊙ SIGN
- ⊙ PYLON
- ⊙ MAILBOX
- ⊙ TREE
- ⊙ SHRUB
- FENCE

TREE LEGEND

- C = CYPRESS
- M = MAPLE
- O = OAK
- P = PINE
- PR = PEAR



CERTIFICATION

I CERTIFY THAT THIS PLAN DOES REPRESENT AN ACTUAL GROUND SURVEY AND THAT TO THE BEST OF MY KNOWLEDGE NO ENCROACHMENTS EXIST EITHER WAY ACROSS ANY OF THE PROPERTY LINES, EXCEPT AS SHOWN. ENCUMBRANCES SHOWN HEREON ARE NOT NECESSARILY EXCLUSIVE. ENCUMBRANCES OF RECORD AS SHOWN ON TITLE OPINION OR TITLE POLICY WILL BE ADDED HERETO UPON REQUEST. AS SURVEYOR HAS NOT PERFORMED ANY TITLE SEARCH OR ABSTRACT.

PROPERTY IS NOT SURVEYED IN ACCORDANCE WITH THE LOUISIANA "MINIMUM STANDARDS FOR PROPERTY BOUNDARY SURVEYS." BEARINGS ARE BASED ON RECORD BEARINGS UNLESS NOTED OTHERWISE.

F:\DRAWINGS\Arch\2007\20072203.dwg, 10/29/2007 9:42:30 AM, Alex, Siko

J.V. Burkes & Associates, Inc.
 SURVEYING ENGINEERING • ENVIRONMENTAL
 1805 HWY. 190 EAST
 Slidell, Louisiana 70458
 E-mail: jvbassoc@jvburkes.com

PARTIAL TOPOGRAPHIC SURVEY OF
 POPE JOHN PAUL HIGH SCHOOL
 SECTION 12, T9S-R14E
 ST. TAMMANY PARISH
 LOUISIANA

SCALE: 1" = 30'
 DATE: 8/28/2007
 DRAWN BY: DLT
 DWG. NO.: 20072203
 SHEET: 1 OF 1