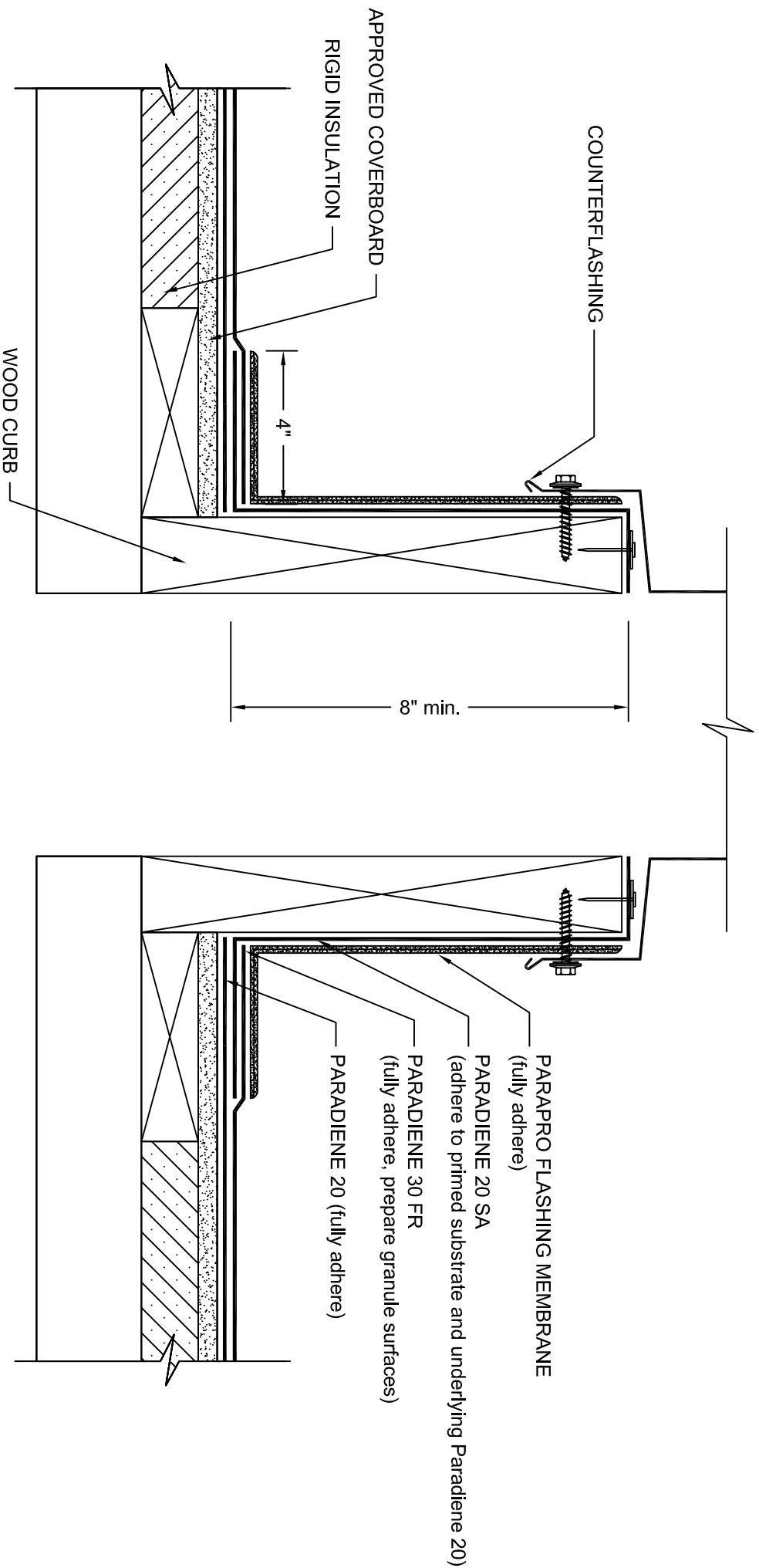


CURB WITH PARRARO FLASHING PARADIENE 20/30 FR - RIGID INSULATION



NOTES:

1. WHERE PRIMER IS INDICATED PA-1125, PA-917 LS, OR TA-119 PRIMER ARE REQUIRED TO MAINTAIN PROPER ADHESION. TA-119 IS REQUIRED FOR ALL PARADIENE 20 SA FLASHING REINFORCING AND STRIPPING PLY APPLICATIONS. CONTACT SIPLAST FOR SPECIFIC REQUIREMENTS.
2. REFER TO SIPLAST PREPARATION GUIDELINES FOR PROPER SURFACE TREATMENT OF ALL MATERIALS PRIOR TO APPLICATION OF PARRARO MATERIAL.
3. PARRARO CANNOT BE APPLIED IN THE ABOVE CONFIGURATION OVER MEMBRANES OR OTHER MATERIALS CONTAINING UNCURED, SOLVENT-BASED MATERIALS. CONTACT SIPLAST FOR FURTHER INFORMATION.
4. REFER TO SIPLAST FLEECE CUTTING RECOMMENDATIONS FOR CONFIGURATIONS, CUTTING, AND LAPPING TECHNIQUES.
5. THE CARPENTRY AND METAL WORK SHOWN DEPICTS SHOP FABRICATION AND JOB-SITE ASSEMBLY. THESE COMPONENTS SHOULD BE DESIGNED/FABRICATED/INSTALLED/ACCORDING TO GENERALLY ACCEPTED INDUSTRY PRACTICES, STANDARDS, AND APPROVALS.
6. REQUIREMENTS AND RECOMMENDATIONS DETAILED IN THE CURRENT SIPLAST SPECIFICATIONS AND PARRARO ROOF SYSTEM INSTALLER'S GUIDE SHALL APPLY IN ADDITION TO THE ABOVE DRAWING.
7. CONSULT TERANAP SPECIFICATION PLATES FOR OVERBURDEN/PROTECTION SYSTEM OPTIONS.

CAUTION: SIPLAST RECOMMENDS THAT ALL PRACTICES PERTAINING TO NRCA CERTA GUIDELINES BE FOLLOWED WHEN TORCHING METHODS ARE EMPLOYED. THIS INCLUDES PERFORMING A FIRE WATCH FOLLOWING ANY TORCH APPLICATIONS. ALWAYS HAVE APPROVED FIRE-EXTINGUISHING EQUIPMENT NEARBY.

N.T.S