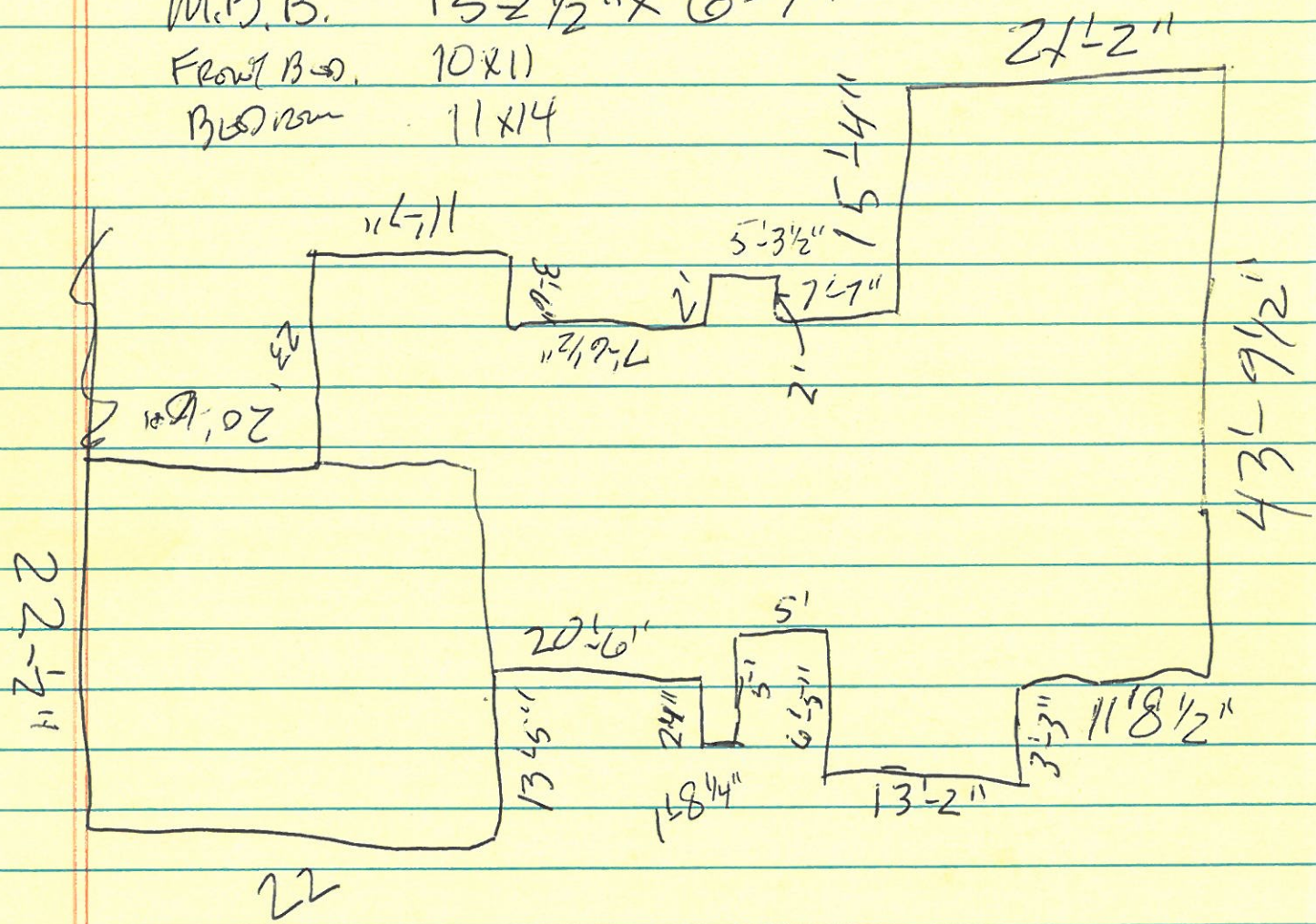


10 - Ceiling
2 Room

KITCHEN 10'-4" x 32'-9"
UTILITY 6'-8" x 8'
LIVING/DIN 28' x 20'-7"

22

M.B. 15 x 13'
M.B.B. 15'-2 1/2" x 6'-7"
Front Bed. 10 x 11
Bedroom 11 x 14



FRONT

Bedroom 14'-6" x 11'
BATH. 5' x 9'