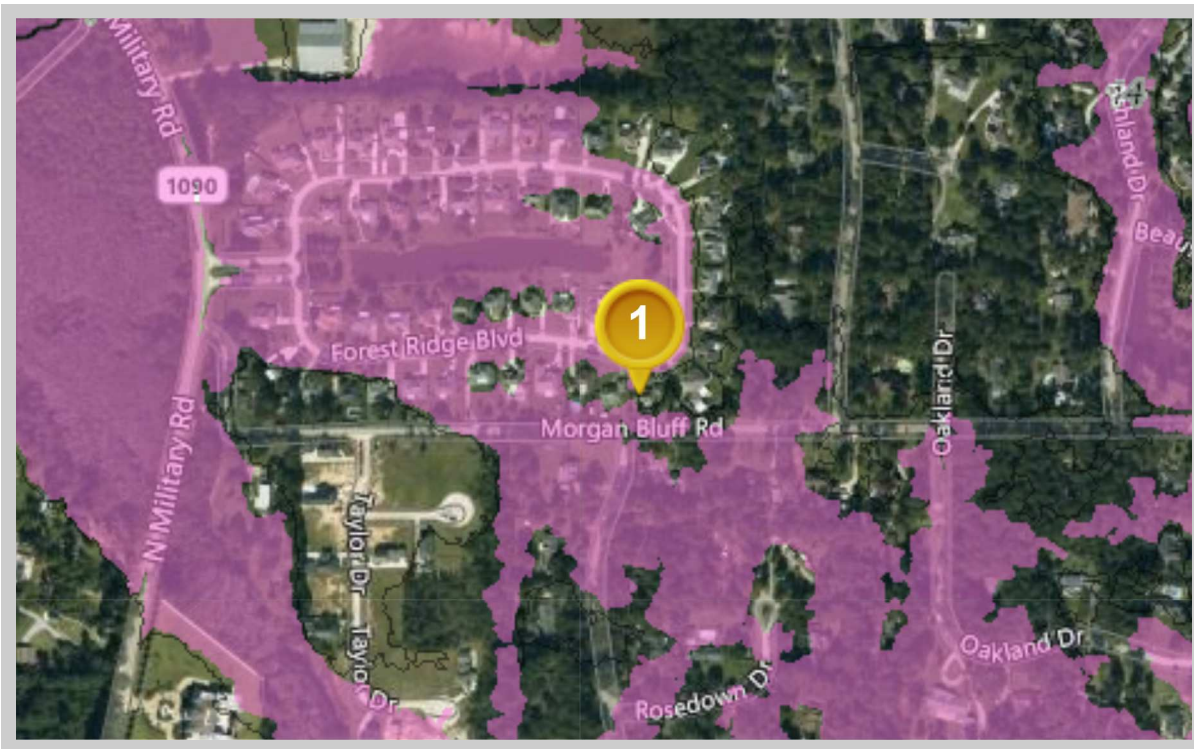




Email Print

Louisiana Flood Map

1085 forest ridge



Visible Layers

- Preliminary FIRM
- Bing Hybird

Point Coordinates

Point #	Lat., Long.
1	30.3365, -89.7303

Flood information in this table is from the: Preliminary FIRM

Point	Panel ID	Flood Zone	BFE	Ground Elevation	LOMR
1	22103C0503F 04/30/2008	X	out	15.6	N/A

1. **Ground Elevation** is provided by USGS's elevation web service which provides the best available data for the specified point. If unable to find elevation at the specified point, the service returns an extremely large, negative value (-1.79769313486231E+308).

Floodplain data that is shown on this map is the same data that your flood plain administrator uses. This web product is not considered an official FEMA Digital Flood Insurance Rate Map (DFIRM). It is provided for information purposes only, and it is not intended for insurance rating purposes. Please contact your local floodplain administrator for more information or to view an official copy of the FIRM or DFIRM.