

Ordering Information

Applicable product:		
Four-hole sink	K-5959-4	shown
Three-hole sink	K-5959-3	not shown
Accessories/hardware:		
Hardwood cutting board	K-6513	optional
Bottom basin rack	K-6003	optional
Metal frame	K-6596	recommended

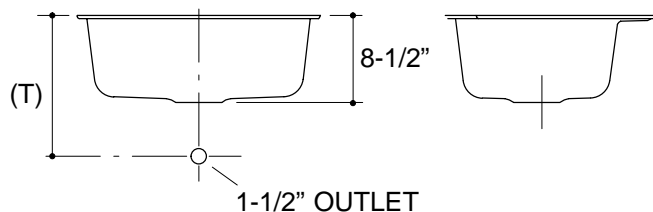
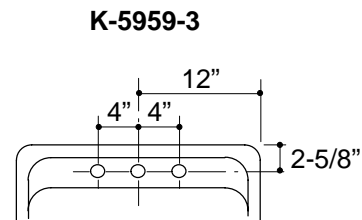
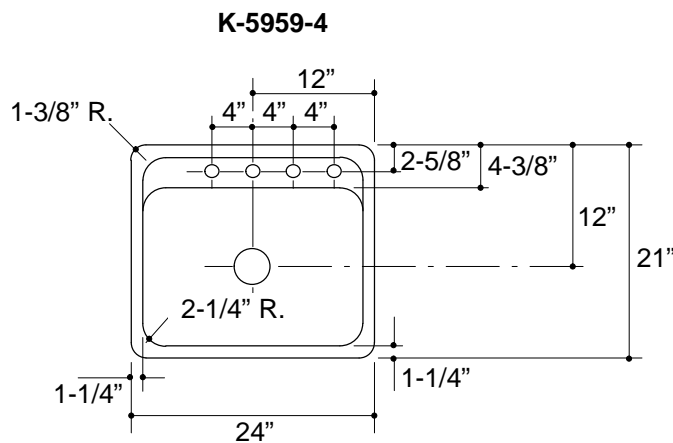
Product Information

Fixture*:		basin area	water depth
Sink		22" x 15"	7-3/4"
Outlet	3-5/8" D.		
Faucet holes	1-3/8" D.		

* Approximate measurements for comparison only.

Installation Notes

Refer to installation instructions included with fixture before beginning installation.



.85<116

Roughing-In Notes

Fixture dimensions are nominal and conform to tolerances in ASME/ANSI Standard A112.19.1M.

(T) Drain typically 13-7/8".

Cutout	Metal frame required.
--------	-----------------------