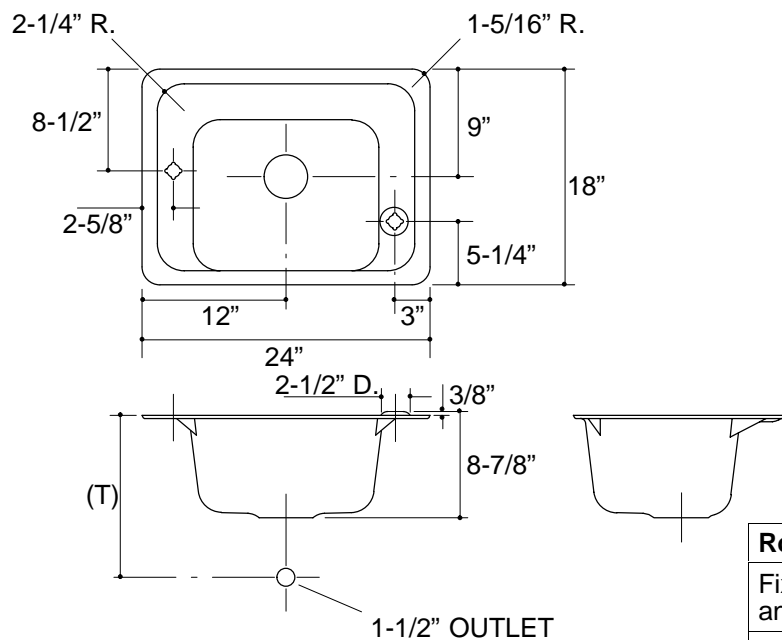


Ordering Information

Accessories/hardware:		
1-1/2" trap	K-9000	recommended*
Faucet	K-7898	recommended*
Faucet/bubbler	K-7524	recommended*
Metal frame	K-6594	recommended
Strainer	K-8807	optional
* Dimensions illustrated		

Product Information

Fixture*:		basin area	water depth
Sink		15" x 12"	8"
Outlet	3-5/8" D.		
Faucet hole	1-1/8" D.		
Bubbler hole	1-1/8" D.		
* Approximate measurements for comparison only.			



Roughing-In Notes

Fixture dimensions are nominal and conform to tolerances in ASME/ANSI Standard A112.19.1M.

(T) Drain typically 13-1/2".