

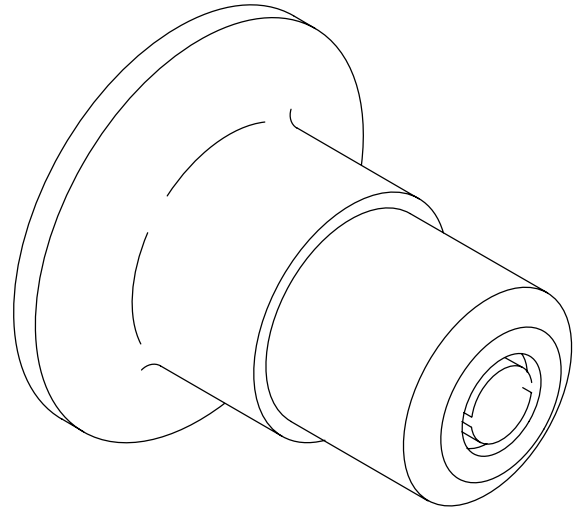
FEATURES

- *Brass construction*
- *Brass valve body*
- *Valvet® valve*

CODES/STANDARDS APPLICABLE

Specified model meets or exceeds the following:

- *ASME/ANSI A112.18.1M*
- *CSA B125*
- *IAPMO/UPC*

**COLORS/FINISHES**

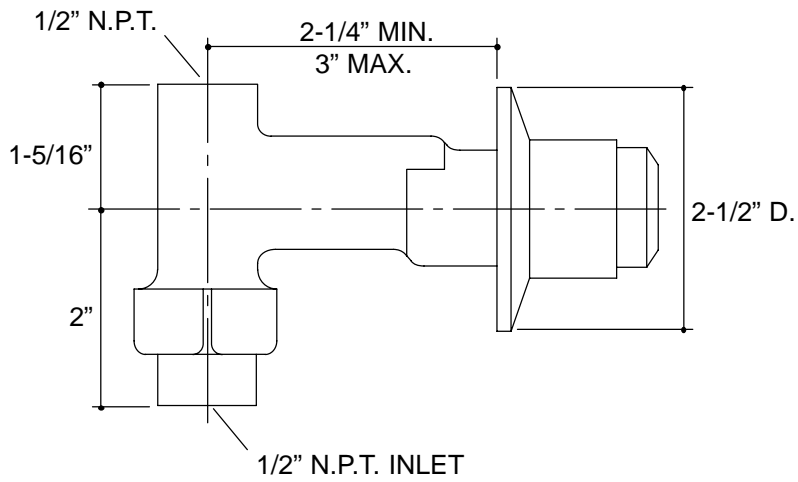
- CP Polished Chrome

SPECIFIED MODEL:

Model	Description	
K-7050	Triton Built-In Check Valve	<input type="checkbox"/> CP

PRODUCT SPECIFICATION:

Built-in check valve shall be of brass construction. Check valve shall feature Valvet valve with brass valve body. Check valve shall be Kohler Model K-7050-CP.



PRODUCT DIAGRAM