

Ordering Information

Accessories/hardware:		
Stainless steel rim guard	K-8935	optional
Cast brass loose strainer	K-13864	optional
Service sink faucet*	K-13642	optional
* Suggested dimensions shown, if used.		

Product Information

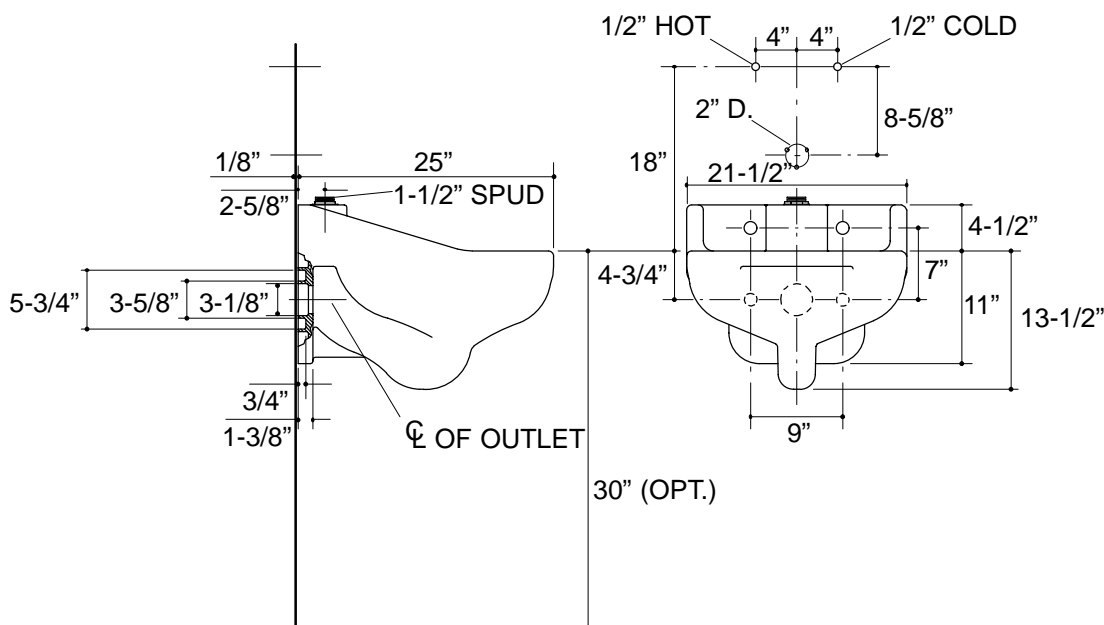
Fixture*:		basin area	water depth
Sink		18" x 18"	6-1/4"
Water surface	15" x 16"		
Outlet	3-1/8" D.		
Spud hole	2-1/4" D.		
Passageway	2-5/8"		
Minimum running pressure required			25 p.s.i.
* Approximate measurements for comparison only.			

Included Components:

1-1/2" spud	18357
-------------	-------

Installation Notes

Follow carrier manufacturer's installation instructions.



Roughing-In Notes

Fixture dimensions are nominal and conform to tolerances in ASME Standard A112.19.2M.