

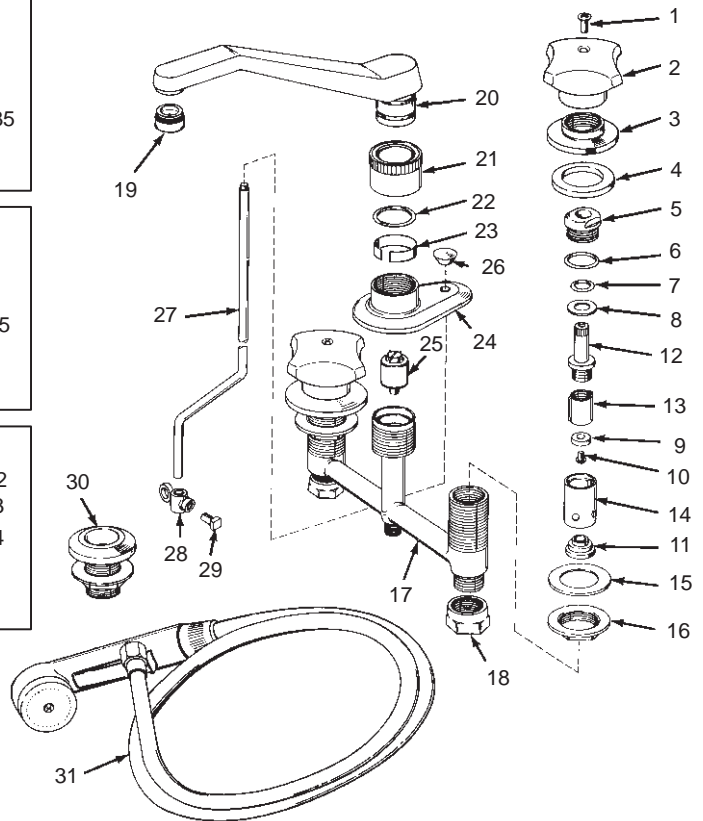
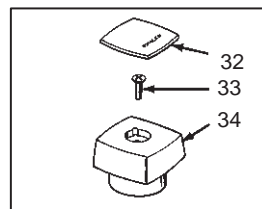
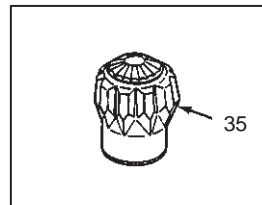
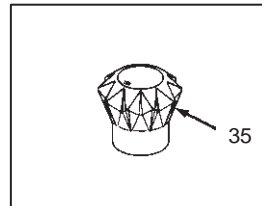
K-6956 ALTERNA
K-7449-FL§ FLAIR
K-7449-DB FLAIR II
K-7449-T TRITON II

LADY VANITY LAVATORY FITTING
 LADY VANITY LAVATORY FITTING
 LADY VANITY LAVATORY FITTING
 LADY VANITY LAVATORY FITTING

ORDER BY KIT NUMBER OR PART NUMBER, NOT ITEM NUMBER OR KIT LETTER.

Ordering Options

Item	Part No. or Kit
1	B
2	C
3	D
4	39924
5	20475
6, 7, 8, 9, 10, 11	A, E
12, 13, 14	E
15, 16	F
17	*
18	G
19	41056‡, M
20, 21	M
22	29464, M
23	41495, M
24	41309‡
25	43262
26	H or I
27	41315‡
28, 29	J
30	34329
31	41310‡
32	K
33	L
34	29717‡
35	N



Kit Ordering Information

Kit	Kit Part No.	Kit Name
A	30294	Valve Rebuilding
B	30097 ‡	Screw
C	30024 ‡	Triton II Handle
D	30083 ‡	Escutcheon
E	30002	Valve Replacement
F	30234 ‡	Attachment
G	30230 ‡	Coupling Nut
H	35764 ‡	Lift Knob (Triton, Flair, Flair II Round)
I	29700	Lift Knob (Alterna Square)
J	30235	Link S.A.
K	29746	Index Cap
L	30105 ‡	Screw
M	41308 ‡	Spout Nut S.A.
N	106299 §■	Flair, Flair II Handle Options

Kit Contents

2 ea., Items 6 thru 11
 2 ea., Item 1
 1 ea. Hot, 1 ea. Cold; Item 2
 2 ea., Item 3
 1 ea., Items 6 thru 14
 2 ea., Items 15 and 16
 2 ea., Item 18
 1 ea., Item 26
 1 ea., Item 26
 1 ea., Items 28 and 29
 4 pr. of 4 finishes; Item 32
 2 ea., Item 33
 1 ea., Items 19 thru 23
 See INDEX.

KITS MAY INCLUDE EXTRA PARTS

NOTES:

* Not available as a service part.
 For pop-up drain, see K-7701.

LEGEND:

‡ Specify Finish.
 § Reference Number Only.
 ■ Parts further exploded within catalog; see INDEX.