

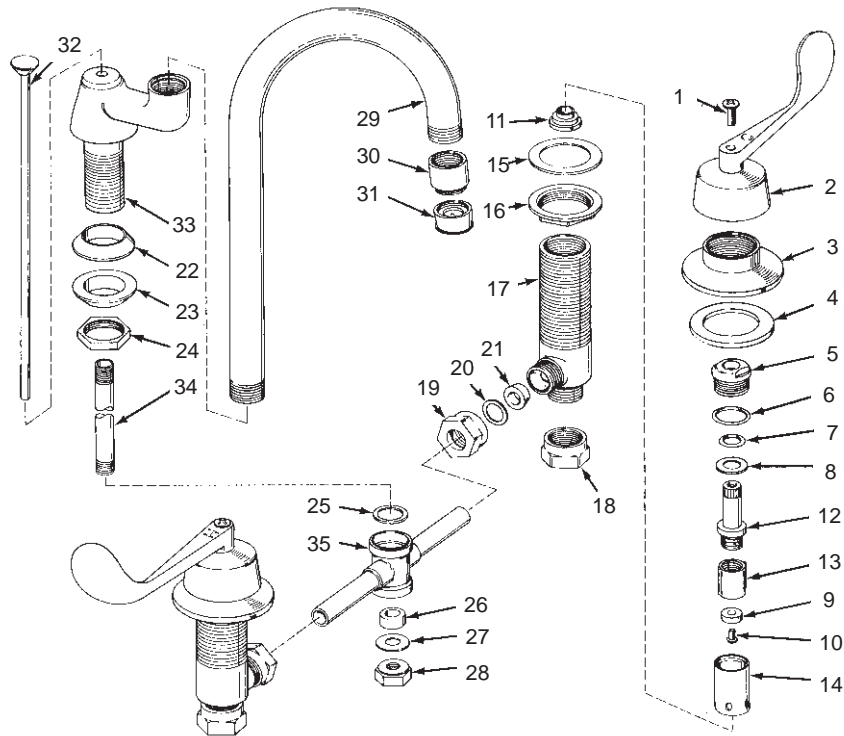
K-13375

LAVATORY FITTING

ORDER BY KIT NUMBER OR PART NUMBER, NOT ITEM NUMBER OR KIT LETTER.

Ordering Options

Item	Part No. or Kit
1	B
2	C
3	D
4	35715
5	20475
6, 7, 8, 9, 10, 11	A, E or F
12, 13, 14	E or F
15, 16	G
17	34303
18, 19	H
20, 21, 22, 23, 24,	I
25, 26, 27, 28	I
29	35722‡
30	33968‡
31	37725‡
32	51196‡
33	35001‡
34	*
35	35821



Kit Ordering Information

Kit	Kit Part No.	Kit Name
A	30294	Valve Rebuilding
B	30105‡	Screw
C	30061‡	4" Wrist Handle
D	30078‡	Escutcheon
E	30135	Valve Replacement (Closes Clockwise)
F	30134	Valve Replacement (Closes Counterclockwise)
G	30234	Attachment S.A.
H	30230	Coupling Nut
I	30229	Gasket

Kit Contents

2 ea., Items 6 thru 11
 2 ea., Item 1
 1 ea. Hot, 1 ea. Cold; Item 2
 2 ea., Item 3
 1 ea., Items 6 thru 14
 1 ea., Items 6 thru 14
 2 ea., Items 15 and 16
 2 ea., Items 18 or 19
 2 ea., Items 20 and 21
 1 ea., Items 22 thru 28

KITS MAY INCLUDE EXTRA PARTS

NOTES:

For pop-up drain see K-7701.
 * Not available as a service part.

LEGEND:

‡ Specify Finish.