

KOHLER® SERVICE PARTS

LAVATORY FITTINGS

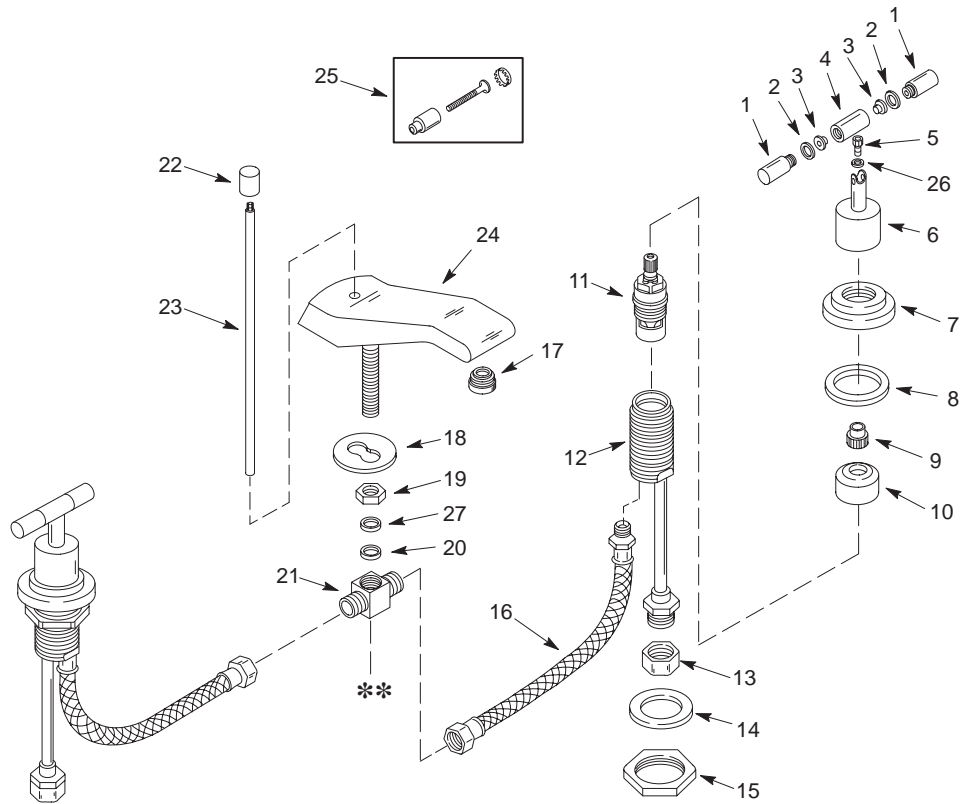
K-8211-FCV TABORET
K-8212-FCV TABORET

WIDESPREAD LAVATORY FAUCET
WIDESPREAD LAVATORY FAUCET

ORDER BY KIT NUMBER OR PART NUMBER, NOT ITEM NUMBER OR KIT LETTER.

Ordering Options

Item	Part No. or Kit
1	I or J
2	A, I or J
3	54931, I or J
4	42660 ‡, I or J
5	55432
6	42669 ‡
7	42687 ‡
8	B
9	42685
10	O
11	C or D
12	*
13	E, F
14, 15 F	
16	40008
17	K or L
18 thru 21	G
22	42688 ‡
23	42690 ‡
24	M or N
25	H
26	55433
27	G



Kit Ordering Information

Kit	Kit Part No.	Kit Name	Kit Contents
A	43414	Index Ring Kit	2 ea., Hot, 2 ea., Cold; item 2
B	30340	Seepage Washer Kit	2 ea., item 8
C	30430	Ceramic Cartridge (Closes Clockwise)	1 ea., item 11
D	30431	Ceramic Cartridge (Closes Counterclockwise)	1 ea., item 11
E	30230	Coupling Nut Kit	2 ea., item 13
F	30332	Mounting Hardware Kit	2 ea., items 13, 14, and 15
G	40036	Cross Connection Kit	1 ea., items 18 thru 21 and 27
H	43413	Vandal Proof Trim Kit	2 ea., item 25
I	43411 ‡	Handle Trim (Metal Finish)	1 ea., item 4; 2 ea., items 1, 2, and 3
J	43412 ‡	Handle Trim (Clear Finish)	1 ea., item 4; 2 ea., items 1, 2, and 3
K	41007 ‡	Aerator	1 ea., item 17
L	41061 ‡	Aerator (Vandal Proof)	1 ea., item 17
M	54958 ‡	Spout Assembly	1 ea., items 17 and 24
N	56349 ‡	Spout Assembly (Vandal Proof)	1 ea., items 17 and 24
O	500253	Stabilizer Kit	2 ea., item 10

KITS MAY INCLUDE EXTRA PARTS

NOTES:

* Not available as a service part.
** For pop-up drain, see Page 2-35.

LEGEND:

‡ Specify finish.