

KOHLER® SERVICE PARTS

TOILET AND BIDET FITTINGS

K-8241
K-8242

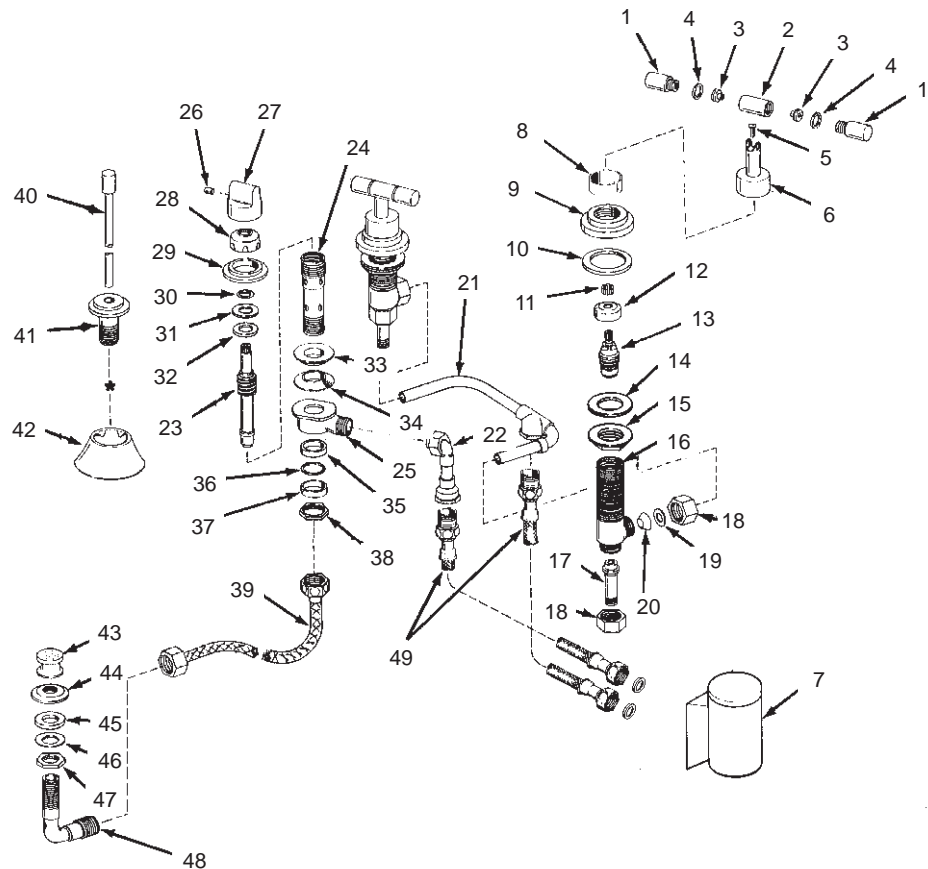
TABORET
TABORET

BIDET FITTINGS
BIDET FITTINGS

ORDER BY KIT NUMBER OR PART NUMBER, NOT ITEM NUMBER OR KIT LETTER.

Ordering Options

Item	Part No. or Kit
1, 2, 3	A or B
4	A or B, C
5	D
6	43416‡
7	K-13056‡■
8	M
9	500279‡
10	35715
11	E
12	O
13	F or G
14, 15	H
16	500280
17	32753
18	I
19, 20	J
21	500282‡
22	48818‡
23	34470
24	48797‡
25	48815‡
26, 27	K
28	34465‡
29	500281‡
30, 31, 32, 33, 34,	J
35, 36, 37, 38	J
39	500278
40	500276‡
41	500277‡
42	42924‡
43	48609‡
44	48805‡
45, 46, 47	L
48	48801
49	N



Kit Ordering Information

Kit	Kit Part No.	Kit Name	Kit Contents
A	43411 ‡	Handle Trim Kit (Metal Finish)	2 ea., Items 1 and 3; 4 ea., Item 4; 1 ea., Item 2
B	43412 ‡	Handle Trim Kit (Acrylic Finish)	2 ea., Items 1 and 3; 4 ea., Item 4; 1 ea., Item 2
C	43414	Index Ring Kit	2 ea., Hot, 2 ea. Cold; Item 4
D	43415	Handle Screw Kit	2 ea., Item 5
E	43417	Spline Adapter Kit	2 ea., Item 11
F	30430	Ceramic Valve (Closes Clockwise)	1 ea., Item 13
G	30431	Ceramic Valve (Closes Counterclockwise)	1 ea., Item 13
H	30231	Attachment Kit	2 ea., Items 14 and 15
I	30230 ‡	Coupling Nut Kit	2 ea., Item 18
J	30257	Gasket Kit	2 ea., Items 19 and 20; 1 ea., Items 30 thru 38
K	500275 ‡	Diverter Knob Kit	1 ea., Items 26 and 27
L	30258	Washer Kit	1 ea., Items 45, 46, and 47
M	500408 ‡	Sleeve Kit (K-8241 only)	2 ea., Item 8
N	50374	Flexible Tubing Kit	2 ea., Item 49
O	500253	Stabilizer Kit	2 ea., Item 12

KITS MAY INCLUDE EXTRA PARTS

NOTES:

* For pop-up drain, see K-7701.

LEGEND:

‡ Specify Finish.

■ Parts further exploded in catalog; see INDEX.