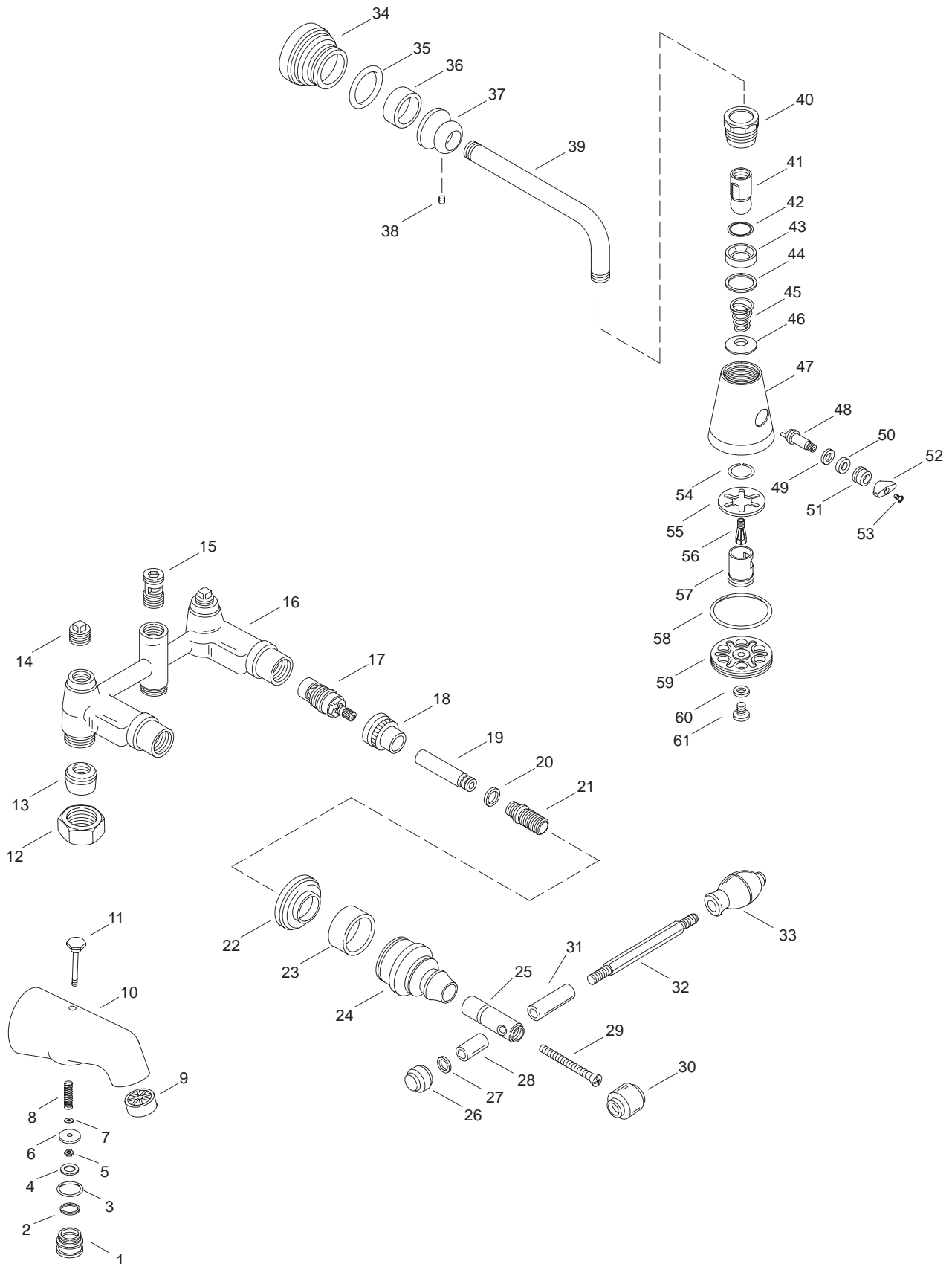


KOHLER[®] SERVICE PARTS

IV GEORGES BRASS™
BATH AND SHOWER FAUCETS
K-6805-CV-**, K-6805-CV-**-AA,
K-6806-CV-**, K-6806-CV-**-AA/BA



Variation and/or finish/color code may be required when ordering.

SERVICE PARTS

ITEM NO.	PART NO.	DESCRIPTION	PART NO.	ITEM NO.	QTY.	DESCRIPTION
1	38711	Cap For Diecast Diverter Spout	38776			Diverter Spout Assembly
2	38677	Gasket, 1.138 ID x 1.245 OD		1	1 ea.	Cap For Diecast Diverter Spout
3	38676	O-Ring, -.024 x 1.114		3	1 ea.	O-Ring, -.024 x 1.114
4	51290	Gasket		4	1 ea.	Gasket
5	41491	Nut, 10-24 NC-2B		5	1 ea.	Nut, 10-24 NC-2B
6	59347	Seal Plate, Diverter		6	1 ea.	Seal Plate, Diverter
7	51176	Washer		7	1 ea.	Washer
8	20494	Spring		8	1 ea.	Spring
9	38808	Bath Stream Breaker		9	1 ea.	Bath Stream Breaker
10	38777	Diverter Spout		10	1 ea.	Diverter Spout
11	20536	Lift Rod		11	1 ea.	Lift Rod
12	24003	Nut, 1.25-14 NS-2B	30147			Valve Service Kit
13	24015	Union Joint (1/2" I.P.)		2	1 ea.	Gasket, 1.138 ID x 1.245 OD
	24899	Union Connection (5/8" O.D. Copper)		3	1 ea.	O-Ring, -.024 x 1.114
14	34191	Plug, 1/2 IPS		4	1 ea.	Gasket
15	20421	Aspirator		5	1 ea.	Nut, 10-24 NC-2B
16	40462	Yoke		6	1 ea.	Seal Plate, Diverter
17	30430	Ceramic Valve (Clockwise Close)		7	1 ea.	Washer
	30431	Ceramic Valve (Counterclockwise Close)		8	1 ea.	Spring
18	40465	Stem Bonnet	30203			Union Assembly
19	40464	Stem Extension		12	2 ea.	Nut, 1.25-14 US-2B
20	40466	Washer, .448 ID x .563 OD		13	2 ea.	Union Connection (5/8" O.D. Copper)
21	40451	Packing Nut	30204			Union Assembly
22	36650	Escutcheon, Bath		12	2 ea.	Nut, 1.25-14 US-2B
23	36638	Sleeve, Large		13	2 ea.	Union Joint (1/2" I.P.)
24	36652	Bonnet, Bath	21674			Escutcheon & Sleeve Assembly
25	36651	Adapter, Bath		22	1 ea.	Escutcheon, Bath
26	36635	Cap, End		23	1 ea.	Sleeve, Large
27	40097	Washer, .281 ID x .460 OD		35	1 ea.	O-Ring, -.025 x 1.176
28	36639	Sleeve, Handle Arm	21682			Handle Assembly
29	40492	Screw, #8-32 x 2-7/8		25	1 ea.	Adapter, Bath
30	36631	Cap, Center		26	1 ea.	Cap, End
31	36640	Sleeve, Handle Arm		27	1 ea.	Washer, .281 ID x .460 OD
32	36630	Handle Arm		28	1 ea.	Sleeve, Handle Arm
33	36629	Knob, Ornamental		30	1 ea.	Cap, Center
34	36728	Escutcheon		31	1 ea.	Sleeve, Handle Arm
35	41364	O-Ring, -.025 x 1.176		32	1 ea.	Handle Arm
36	36638	Sleeve, Large		33	1 ea.	Knob, Ornamental
37	36662	Collar, Shower Arm	21676			Escutcheon Assembly, Large
38	32966	Screw, 8-32 NC-2A x .188		34	1 ea.	Escutcheon
39	24898	Shower Arm		35	1 ea.	O-Ring, -.025 x 1.176
40	29417	Locknut, Multi-Spray Head		36	1 ea.	Sleeve, Large
41	57346	Ball Joint Assembly		37	1 ea.	Collar, Shower Arm
42	52843	Washer, Split		38	1 ea.	Screw, 8-32 NC-2A x .188
43	24981	Packing For Showerhead	58314			Showerhead Assembly
44	29266	Washer, 57/64 x 1-11/64		40	1 ea.	Locknut, Multi-Spray Head
45	29497	Spring, Conical		41	1 ea.	Ball Joint Assembly
46	29520	Washer, 1/2 ID x .300 OD		42	1 ea.	Washer, Split
47	36661	Showerhead Assembly		43	1 ea.	Packing For Showerhead
48	29426	Crank For Multi-Stream		44	1 ea.	Washer, 57/64 x 1-11/64
49	35719	Washer, .390 ID x .590 OD		45	1 ea.	Spring, Conical
50	29549	Crank, Packing		46	1 ea.	Washer, 1/2 ID x .300 OD
51	29548	Nut, Packing 5/8-32 NS		47	1 ea.	Showerhead Assembly
52	29508	Handle For Volume Reg		48	1 ea.	Crank For Multi-Stream
53	29476	Screw, 6-32 NC-2A x .313		49	1 ea.	Washer, .390 ID x .590 OD
54	29424	Snap Ring		50	1 ea.	Crank, Packing
55	29428	Washer, Spring		51	1 ea.	Nut, Packing 5/8-32 NS
56	29420	Plunger, Shower		52	1 ea.	Handle For Volume Reg
57	29422	Crank Tube		53	1 ea.	Screw, 6-32 NC-2A x .313
58	29429	O-Ring, 140		54	1 ea.	Snap Ring
59	58003	Face, Showerhead		55	1 ea.	Washer, Spring
60	29501	Washer, 17/64 ID x 1/2 OD		56	1 ea.	Plunger, Shower
61	29418	Screw, .250-20 UNC-2A x .625		57	1 ea.	Crank Tube
				58	1 ea.	O-Ring, 140
				59	1 ea.	Face, Showerhead
				60	1 ea.	Washer, 17/64 ID x 1/2 OD
				61	1 ea.	Screw, .250-20 UNC-2A x .625

SERVICE KITS

PART NO.	ITEM NO.	QTY.	DESCRIPTION	PART NO.	ITEM NO.	QTY.	DESCRIPTION
30424			Plug Assembly	48661			Plunger Subassembly
	1	1 ea.	Cap For Diecast Diverter Spout		54	1 ea.	Snap Ring
	3	1 ea.	O-Ring, -.024 x 1.114		55	1 ea.	Washer, Spring
					56	1 ea.	Plunger, Shower
					57	1 ea.	Crank Tube

Variation and/or finish/color code may be required when ordering.