

KOHLER® SERVICE PARTS

LAVATORY FITTINGS

K-6762
-L

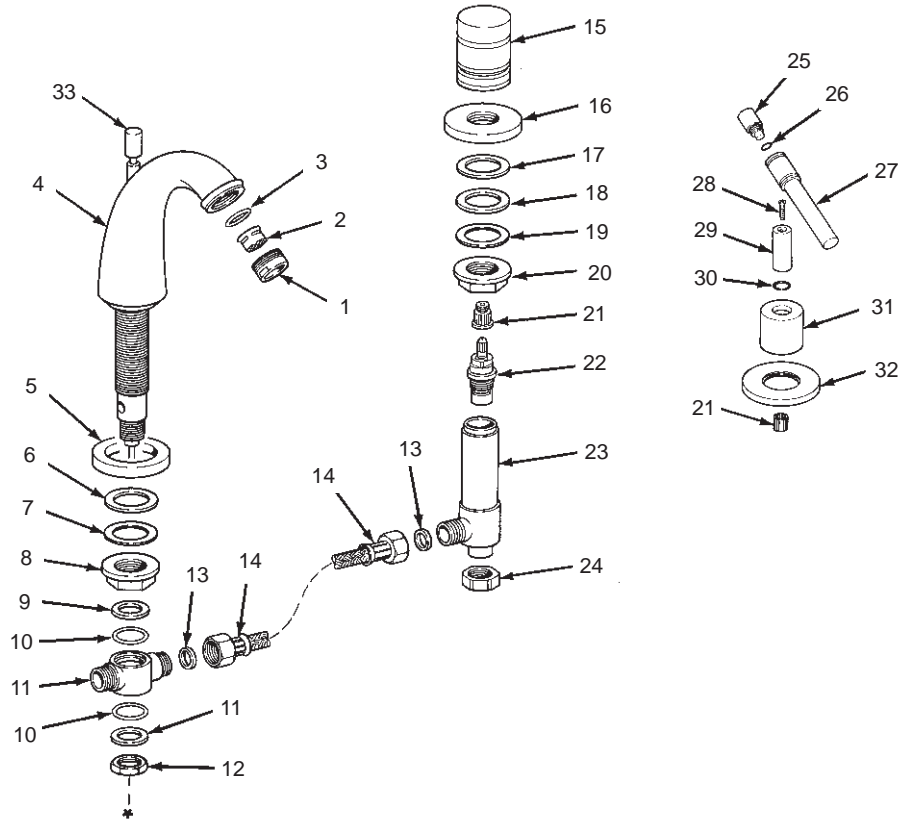
CYGNET

WIDESPREAD LAVATORY FAUCET
WITH LEVER HANDLES

ORDER BY KIT NUMBER OR PART NUMBER, NOT ITEM NUMBER OR KIT LETTER.

Ordering Options

Item	Part No. or Kit
1, 2, 3	23142‡
4	30500‡
5	A
6, 7, 8, 9, 10,	B
11, 12	B
13	C, D
14	D
15	23163‡
16	E
17, 18, 19, 20	F
21	G or H
22	I or J
23	23175
24	K
25, 26, 27, 28, 29	L
30, 31	M
32	N
33	23144‡



Kit Ordering Information

Kit	Kit Part No.	Kit Name	Kit Contents
A	23174‡	Spout Escutcheon	1 ea., Item 5
B	23196	Spout Mounting Hardware	1 ea., Items 6 thru 12
C	30499	Fiber Washers	4 ea., Item 13
D	23173	Hoses	4 ea., Item 13; 2 ea., Item 14
E	23197‡	Escutcheons	2 ea., Item 16
F	23172	Valve Mounting Hardware	1 ea., Items 17 thru 20
G	30502	Spline Adapters (Plastic for Barrel Handles)	2 ea., Item 21
H	48502	Spline Adapters (Brass for Lever Handles)	2 ea., Item 21
I	30430	Valve (Closes Clockwise)	1 ea., Item 22
J	30431	Valve (Closes Counterclockwise)	1 ea., Item 22
K	30230	Coupling Nuts	2 ea., Item 24
L	30544‡	Lever Handle Assembly	1 ea., Items 25 thru 29
M	30545	Sleeve Assembly	1 ea., Items 30, 31
N	30546‡	Escutcheon Kit	2 ea., Item 32

KITS MAY INCLUDE EXTRA PARTS

NOTES:

* For pop-up drain see 23176.

LEGEND:

‡ Specify Finish.