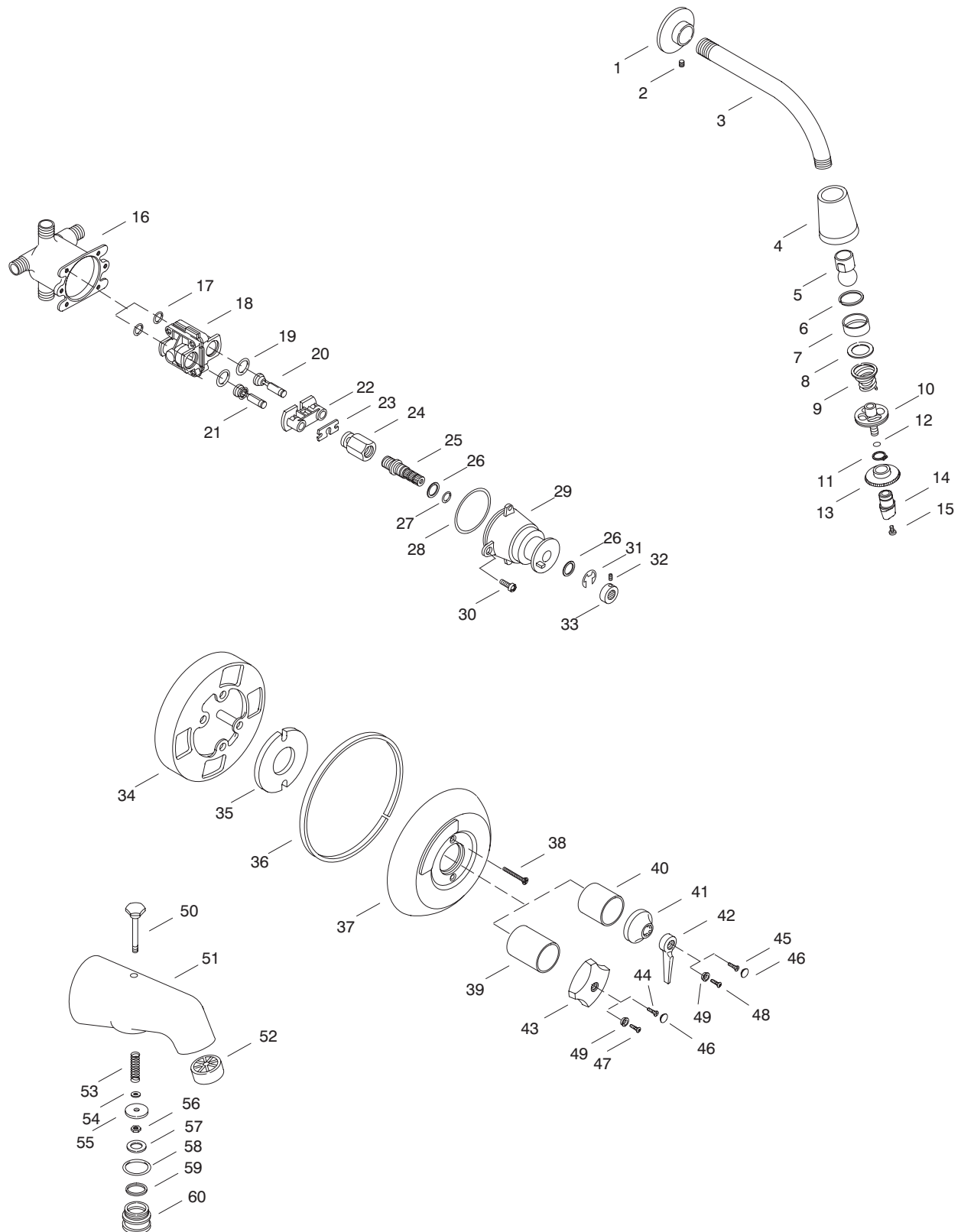


# KOHLER<sup>®</sup> SERVICE PARTS

TRITON™ RITE-TEMP™  
BATH AND SHOWER FAUCET  
K-6908-\*\*-\*\*-AA, K-6908-\*\*-\*\*-BA  
K-6909-\*\*-\*\*-AA, K-6909-\*\*-\*\*-BA



Variation and/or finish/color code may be required when ordering.

## SERVICE PARTS

ITEM	PART NO.	DESCRIPTION
1		Available in Service Kit Only
2	32966	Screw, .164-32 UNC-2A x .188
3	24898	Shower Arm
4	29466	Shower Head Body
5	57346	Ball Joint Assembly
6	52843	Washer, Split
7	24981	Packing for Shower Head
8	29266	Washer, 57/64 x 1-11/64
9	24960	Spring for Shower Head
10	29506	Lock Ring Assembly
11	32698	O-Ring
12	29470	Retaining Ring
13	58001	Face, Shower Head
14	29479	Thumb Nut, Shower Face
15	29476	Screw, .138-32 UNC-2A x .313
16	71916	Body, Pressure Balanced (w/o Stops)
17	52480	O-Ring
18		Available in Service Kit Only
19	52479	O-Ring
20		Available in Service Kit Only
21		Available in Service Kit Only
22	52450	Retainer Plate
23	52454	Stem Bar
24	52455	Stem
25	52453	Spindle
26	52456	Washer
27	52457	O-Ring
28	52477	O-Ring
29	52451	Cap
30	21980	Screw, .250-20 UNC-2A x .500
31	50541	E-Ring
32	20925	Screw, .164-32 UNC-2A x .313
33	52452	Collar, Spindle
34	58564	Plaster Guard
35	52376	Gasket
36	52375	Gasket
37		Available in Service Kit Only
38	22154	Screw, .190-24 UNC-2A x 2.13
39	42052	Mixer Sleeve
40	42285	Sleeve, 1-1/2"
41	52601	Bonnet, Triton
42	52631	Lever Handle
43	52620	Handle, Standard Large
44	56074	Screw, .164-32 UNC x .31
45	31490	Screw, .164-32 UNC-2A x .50
46	52622	Button Cap
47	58891	Screw, 8-32 x .51
48	58892	Screw, 8-32 x .67
49	52623-A	Button Cap, Black
50	20536	Lift Rod
51	38777	Diverter Spout
52	38808	Bath Stream Breaker
53	20494	Spring
54	51176	Washer
55	59347	Seal Plate, Diverter
56	41491	Nut, 10-24 NC-2B
57	51290	Gasket
58	38676	O-Ring
59	38677	Gasket, 1.138 ID x 1.245 OD
60	38711	Cap for Diecast Diverter Spout

## SERVICE KITS

PART NO.	ITEM NO.	QTY.	DESCRIPTION
20345			Flange & Set Screw Assembly
	1	1 ea.	Flange for Shower Arm
	2	1 ea.	Screw, .164-32 UNC-2A x .188
20350			Shower Arm Assembly
	1	1 ea.	Flange for Shower Arm
	2	1 ea.	Screw, .164-32 UNC-2A x .188
	3	1 ea.	Shower Arm
58307	4-15		Shower Head Assembly
58330			Shower Face Subassembly
	12	1 ea.	Retaining Ring
	13	1 ea.	Face, Shower Head
	14	1 ea.	Thumb Nut, Shower Face
76001	17-33		Cap Assembly/PBM
500520			Pressure Balancing Body
	17	2 ea.	O-Ring
	18	1 ea.	Body Subassembly
	19	2 ea.	O-Ring
76002			Cap Subassembly
	20	1 ea.	Plunger, Hot
	21	1 ea.	Plunger, Cold
	22	1 ea.	Retainer Plate
	23	1 ea.	Stem Bar
	24	1 ea.	Stem
	25	1 ea.	Spindle
	26	2 ea.	Washer
	27	1 ea.	O-Ring
	28	1 ea.	O-Ring
	29	1 ea.	Cap
	31	1 ea.	E-Ring
	32	1 ea.	Screw, .164-32 UNC-2A x .313
	33	1 ea.	Collar, Spindle
74895			Plunger Kit
	20	1 ea.	Plunger, Hot
	21	1 ea.	Plunger, Cold
	28	1 ea.	O-Ring
52606			Escutcheon Assembly
	35	1 ea.	Gasket
	36	1 ea.	Gasket
	37	1 ea.	Escutcheon, Rite-Temp/Graphics
38776			Diverter Spout Assembly
	50	1 ea.	Lift Rod
	51	1 ea.	Diverter Spout
	52	1 ea.	Bath Stream Breaker
	53	1 ea.	Spring
	54	1 ea.	Washer
	55	1 ea.	Seal Plate, Diverter
	56	1 ea.	Nut, 10-24 NC-2B
	57	1 ea.	Gasket
	58	1 ea.	O-Ring
	60	1 ea.	Cap for Diecast Diverter Spout
30147			Valve Service Kit
	53	1 ea.	Spring
	54	1 ea.	Washer
	55	1 ea.	Seal Plate, Diverter
	56	1 ea.	Nut, 10-24 NC-2B
	57	1 ea.	Gasket
	58	1 ea.	O-Ring
	59	1 ea.	Gasket, 1.138 ID x 1.245 OD
30424			Plug Assembly
	58	1 ea.	O-Ring
	60	1 ea.	Cap for Diecast Diverter Spout

Variation and/or finish/color code may be required when ordering.