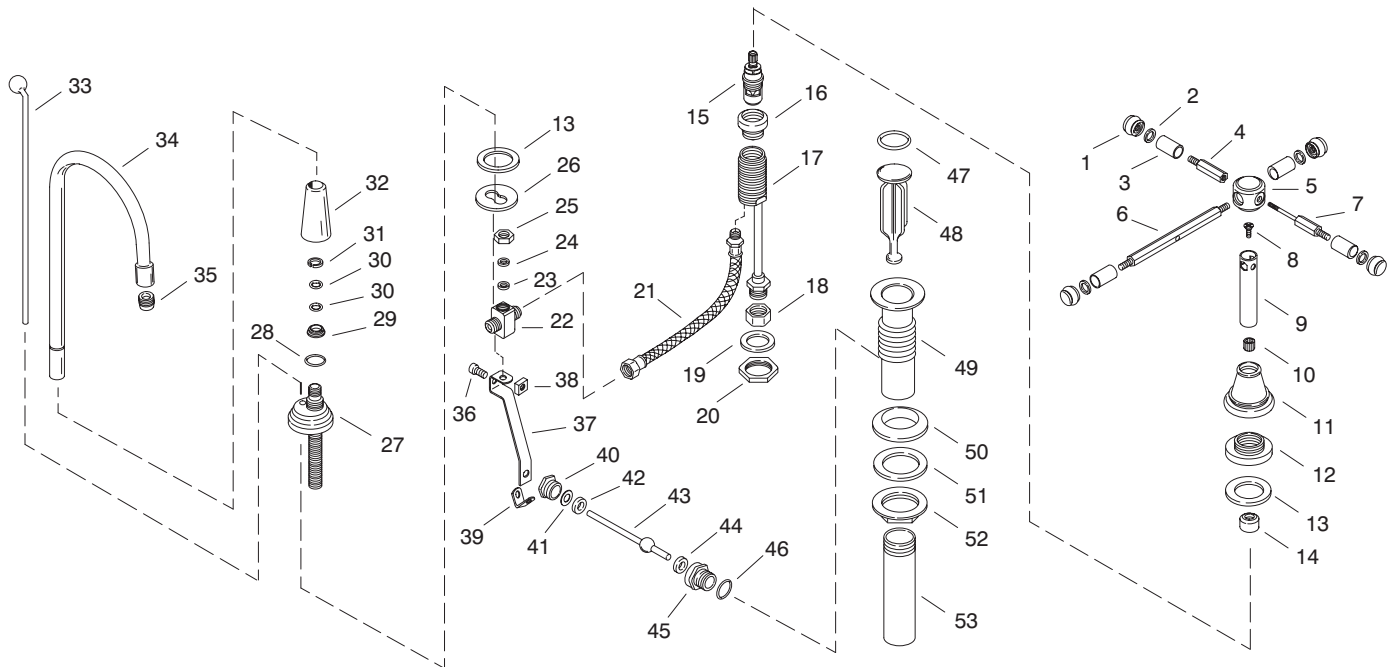


KOHLER[®] SERVICE PARTS

IV GEORGES BRASS™ LAVATORY FAUCET K-6813-XX-AA



SERVICE PARTS

ITEM NO.	PART NO.	DESCRIPTION
1	36635	Cap, End
2	40097	Washer, 9/32 ID x 15/32 OD
3	55740	Sleeve
4	55738	Stud
5	55734	Cap, Center
6	55739	Arm, Cross
7	55852	Stud
8	53416	Screw, 5/32-32 UNC-2A
9	55736	Stem Handle
10	59027	Spline Adapter
11	56672	Escutcheon
12	56515	Escutcheon Nut
13	56106	Washer
14	500253	Stabilizer Kit, 2 ea.
15	30430	Ceramic Valve (Closes Clockwise)
	30431	Ceramic Valve (Closes Counterclockwise)
16		Available in Service Kit Only
17		Available in Service Kit Only
18	30320	Coupling Nut
19	40001	Washer, 1 9/32 ID x 1 3/4 OD
20	40005	Nut, 1 1/4-20 UNS-2B
21	30233	Hose Assembly (2 ea. Hoses)
22	40098	Supply Tee
23	40097	Washer, 9/32 ID x 15/32 OD
24	40013	Gasket, 1/4 ID x 15/32 OD
25	40014	Nut, 3/4-18 NPSM
26	40015	Washer, Special
27		Available in Service Kit Only
28	32725	O-Ring, 116
29	40275	Retaining Collar
30	42045	O-Ring, 012 x 23/64
31	40274	Snap Ring, 1/2 ID
32	40271	Sleeve
33	40156	Rod Assembly
34		Available in Service Kit Only
35	30072	Aerator
36	20452	Screw, 1/4-20 UNC-2A x 5/8
37	51192	Link
38	20451	Nut, 1/4-20 UNC-2B
39	20436	Clip, Spring
40		Available in Service Kit Only
41		Available in Service Kit Only
42		Available in Service Kit Only
43		Available in Service Kit Only
44		Available in Service Kit Only
45		Available in Service Kit Only
46		Available in Service Kit Only
47		Available in Service Kit Only
48		Available in Service Kit Only
49		Available in Service Kit Only
50		Available in Service Kit Only
51		Available in Service Kit Only
52		Available in Service Kit Only
53		Available in Service Kit Only

ITEM NO.	PART NO.	DESCRIPTION
44		Available in Service Kit Only
45		Available in Service Kit Only
46		Available in Service Kit Only
47	38676	O-Ring, -024
48		Available in Service Kit Only
49	38738	Strainer Body Pop-Up Drain
50	33507	Gasket, 1 1/2 Beveled
51	34043	Washer, 1 17/32 x 2 1/8
52	20831	Nut, 1 1/2-16 UNS-2B
53	41640	Tailpiece, 4 1/4 Long

SERVICE KITS

PART NO.	ITEM NO.	QTY.	DESCRIPTION
40409	15	1 ea.	End Valve Assembly, Hot (Clockwise Close)
	16	1 ea.	Ceramic Valve (Clockwise Close)
	17	1 ea.	Bonnet
	18	1 ea.	End Valve Body Assembly
			Nut, 1/2-14 NPSM
40478	15	1 ea.	End Valve Assembly, Cold (CCW Close)
	16	1 ea.	Ceramic Valve (Counterclockwise Close)
	17	1 ea.	Bonnet
	18	1 ea.	End Valve Body Assembly
			Nut, 1/2-14 NPSM
52605			Spout Assembly, Lav
	27	1 ea.	Post; Shank; Escutcheon, Lav Fitting
	28	1 ea.	O-Ring, 116
	29	1 ea.	Retaining Collar
	30	2 ea.	O-Ring, 012 x 23/64
	31	1 ea.	Snap Ring, 33/64 ID
	32	1 ea.	Sleeve
	34	1 ea.	Spout
	35	1 ea.	Aerator
29811			Ball Lever Assembly
	40	1 ea.	Nut, 15/16-20 UNEF-2A
	41	1 ea.	Washer, 17/32 x 47/64
	42	1 ea.	Washer, 31/64 ID x 3/4 OD
	43	1 ea.	Ball & Trip Lever Assembly
	44	1 ea.	Washer, 31/64 ID x 3/4 OD
	45	1 ea.	Trip Lever Housing
	46	1 ea.	Gasket, 57/64 x 63/64
38736			Drain Plug Assembly
	47	1 ea.	O-Ring, -024
	48	1 ea.	Plug

Variation and/or finish/color code may be required when ordering.