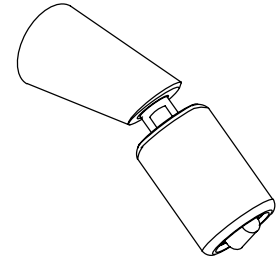


**SHOWER FAUCET
K-7951-2**

FEATURES

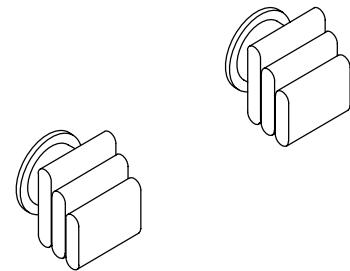
- Brass construction
- Brass valve bodies
- 1/2" quarter-turn washerless ceramic disc valves
- Pillows handles



CODES/STANDARDS APPLICABLE

Specified model meets or exceeds the following:

- ASME/ANSI A112.18.1M
- CSA B125
- IAPMO/UPC



COLORS/FINISHES

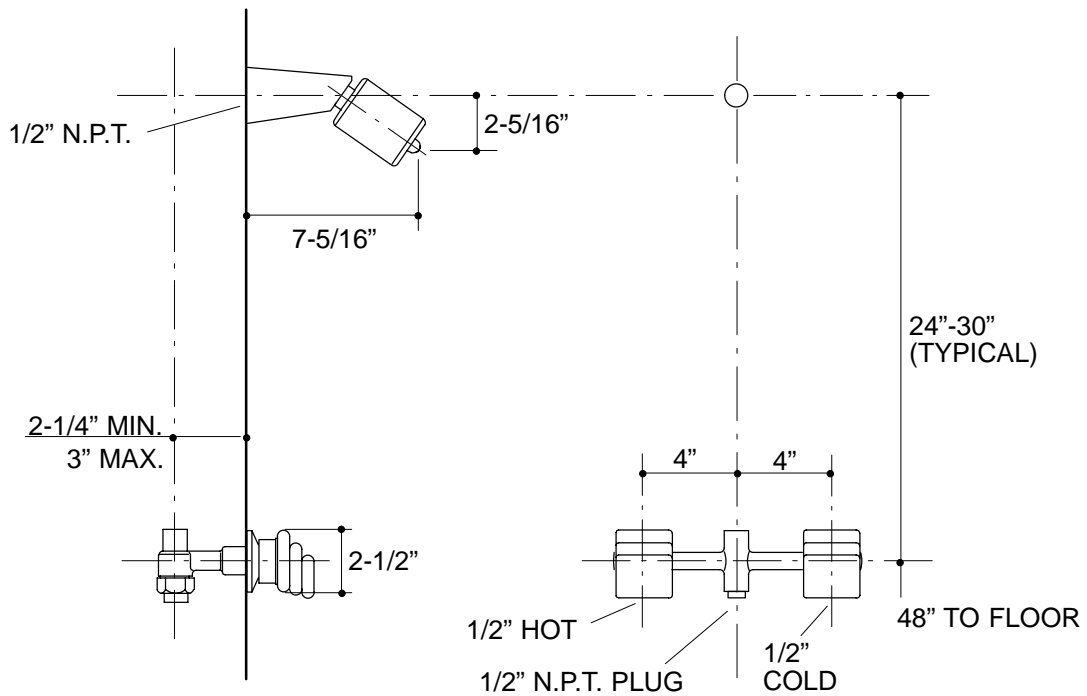
- PB Polished Brass
- SC Satin Chrome

SPECIFIED MODEL:

Model	Description		
K-7951-2	Pillows Shower Faucet	<input type="checkbox"/> PB	<input type="checkbox"/> SC

PRODUCT SPECIFICATION:

Two-handle shower faucet shall be of brass construction. Faucet shall feature brass valve bodies. Faucet shall feature 1/2" quarter-turn washerless ceramic disc valves, assuring positive handle stop positioning. Product shall include showerhead with arm, and Pillows handles. Faucet shall be Kohler Model K-7951-2-_____.



PRODUCT DIAGRAM