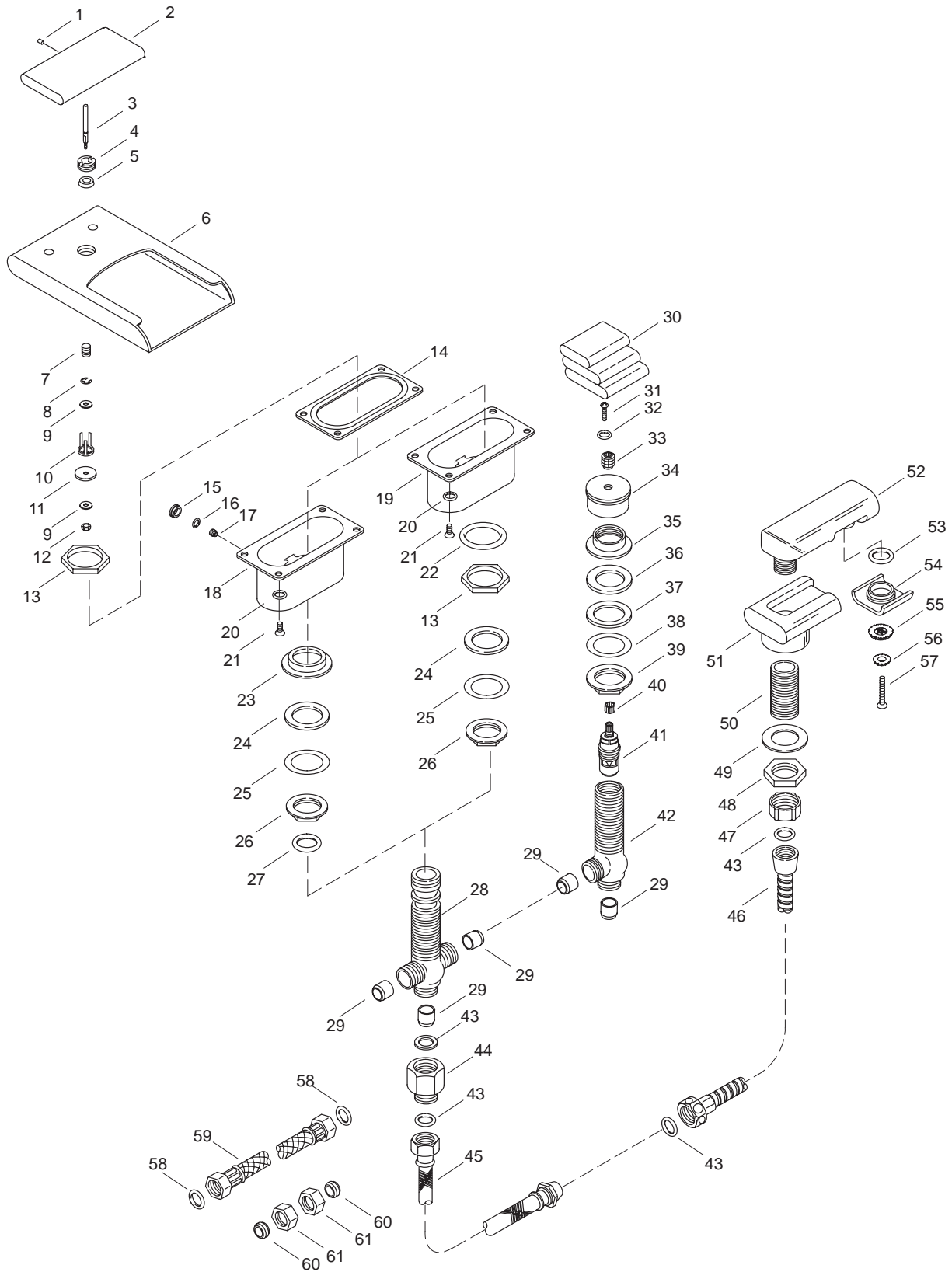


KOHLER[®] SERVICE PARTS

PILLOWS[™] RIM/DECK-MOUNT FAUCETS WITH FLUME[™] DIVERTER SPOUT K-7953-**-AA/AB/BB/CB, K-7954-**-AA/BA/CA



Variation and/or finish/color code may be required when ordering.

KOHLER[®] SERVICE PARTS

PILLOWS™ RIM/DECK-MOUNT FAUCETS WITH FLUME™ DIVERTER SPOUT K-7953-**-AA/AB/BB/CB, K-7954-**-AA/BA/CA

SERVICE PARTS

ITEM NO.	PART NO.	DESCRIPTION
1	56363	Screw, .164-32 UNC-3A
2	52532	Lift Knob Assembly
3	50714	Rod, Diverter
4	52081	Retainer
5	50713	Cup Washer
6	52669	Channel, Rim Diverter Spout (for K-7953)
	52094	Channel, Rim Diverter Spout (for K-7954)
7	50716	Spring
8	50715	E-Ring
9	51176	Washer
10	50717	Guide, Diverter
11	50719	Seal, Washer-Diverter
12	41491	Nut, 10-24 NC-2B
13	40005	Nut, 1.25-20 UNS-2B (for K-7953)
14	50749	Seal
15	50727	Plug Button
16	42160	O-Ring
17	52095	Screw, .438-14 UNC-2A
18	51012	Base (for K-7954)
19	56371	Base (for K-7953)
20	56581	Washer
21	52096	Screw, .250-20 UNC-2A
22	51127	O-Ring
23	50748	Nut, 1.5-16 UNS-2B (for K-7954)
24	52114	Rubber Washer
25	52113	Fiber Washer
26	52125	Locknut
27	50729	O-Ring, -122 x 1.112 (for K-7954)
28	56451	Body Subassembly (for K-7953)
	50731	Body Subassembly (for K-7954)
29	55766	Bushing, Reducer
30	58796	Pillow Handle Subassembly
31	51677	Screw, .164-32 UNC-2A x .380
32	35789	Washer
33	29772	Spline Adapter, Wood
34	51219	Handle Base
35	52112	Escutcheon
36	34037	Gasket, 1-1/2 x 2-3/16
37	22400	Washer
38	22352	Washer
39	22351	Nut
40	59027	Spline Adapter
41	22377	Valve Cartridge, Ceramic (Counterclockwise Close)
42	55041	Valve Assembly, Side-3/4"
43	41163	Washer
44	56252	Check Valve Assembly
45	52600	Hose, High Pressure
46	21481	Interlock Hose, 69"
47	52593	Cap Nut, Plastic
48	52595	Nut, 1.187-20
49	52596	Brass, Washer
50	52594	Tube, Brass Threaded
51	52100	Holder Base
52		Available in Service Kit Only
53	52517	O-Ring, -123 x 1.174
54	52105	Bezel
55	58004	Spray Ring, Large
56	52108	Spray Ring, Small
57	52630	Screw, .190-32 UNF x .875
58	22340	Washer
59	21640	Flex, Hose with 3/4" Connection
60	50726	Ferrule
61	50725	Nut, .75-14 NPSM

SERVICE KITS

PART NO.	ITEM NO.	QTY.	DESCRIPTION
52534			Pillow Spout Assembly
	1	1 ea.	Screw, .164-32 UNC-3A
	2	1 ea.	Lift Knob Assembly
	3	1 ea.	Rod, Diverter
	4	1 ea.	Retainer
	5	1 ea.	Cup Washer
	6	1 ea.	Channel, Rim Diverter Spout (for K-7954)
	7	1 ea.	Spring
	8	1 ea.	E-Ring
	9	2 ea.	Washer
	10	1 ea.	Guide, Diverter
	11	1 ea.	Seal, Washer-Diverter
	12	1 ea.	Nut, 10-24 NC-2B
	14	1 ea.	Seal
	18	1 ea.	Base (for K-7954)
	20	4 ea.	Washer
	21	4 ea.	Screw, .250-20 UNC-2A
56467			Spout Subassembly, Pillows Rim
	1	1 ea.	Screw, .164-32 UNC-3A
	2	1 ea.	Lift Knob Assembly
	3	1 ea.	Rod, Diverter
	4	1 ea.	Retainer
	5	1 ea.	Cup Washer
	6	1 ea.	Channel, Rim Diverter Spout (for K-7953)
	7	1 ea.	Spring
	8	1 ea.	E-Ring
	9	2 ea.	Washer
	10	1 ea.	Guide, Diverter
	11	1 ea.	Seal, Washer-Diverter
	12	1 ea.	Nut, 10-24 NC-2B
	14	1 ea.	Seal
	18	1 ea.	Base (for K-7953)
	20	4 ea.	Washer
	21	4 ea.	Screw, .250-20 UNC-2A
500474			Diverter Rebuild Kit
	5	1 ea.	Cup Washer
	7	1 ea.	Spring
	8	1 ea.	E-Ring
	9	2 ea.	Washer
	11	1 ea.	Seal, Washer-Diverter
	12	1 ea.	Nut, 10-24 NC-2B
	14	1 ea.	Seal
	18	1 ea.	Base (for K-7953)
	20	4 ea.	Washer
	21	4 ea.	Screw, .250-20 UNC-2A
52678			Hardware Assembly, Shank
	13	2 ea.	Nut, 1.25-20 UNS-2B (for K-7953)
	22	1 ea.	O-Ring
	24	1 ea.	Rubber Washer
	25	1 ea.	Fiber Washer
	26	1 ea.	Locknut
52530			Hardware Assembly, Spout
	15	1 ea.	Plug Button
	16	1 ea.	O-Ring
	17	1 ea.	Screw, .438-14 UNC-2A
55767			Kit, Reducer Bushing
	29	7 ea.	Bushing, Reducer
50667			Pillow Handle Assembly
	30	1 ea.	Pillow Handle Subassembly
	31	1 ea.	Screw, .164-32 UNC-2A x .380
	32	1 ea.	Washer
	33	1 ea.	Spline Adapter, Wood
	34	1 ea.	Handle Base
52539			Mounting Hardware Subassembly
	37	1 ea.	Washer
	38	1 ea.	Washer
	39	1 ea.	Nut
58911			Hand Shower Assembly
	52	1 ea.	Hand Shower
	53	1 ea.	O-Ring, -123 x 1.174
	54	1 ea.	Bezel
	55	1 ea.	Spray Ring, Small
	56	1 ea.	Spray Ring, Large
	57	1 ea.	Screw, .190-32 UNF x .875
52531			Hardware Assembly
	60	2 ea.	Ferrule
	61	2 ea.	Nut, .75-14 NPSM

Variation and/or finish/color code may be required when ordering.