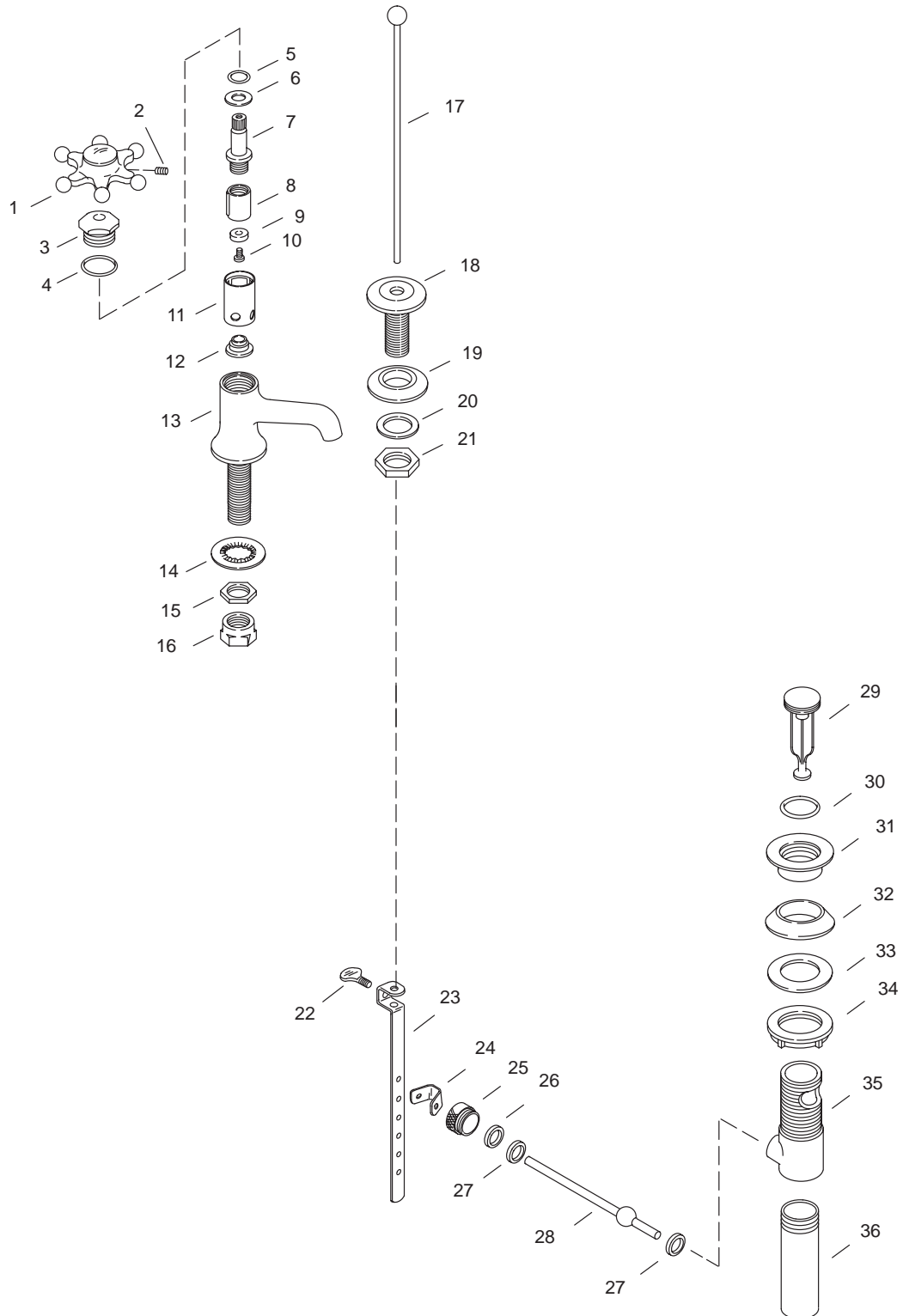


KOHLER[®] SERVICE PARTS

ANTIQUE™ LAVATORY FAUCETS
K-153-**-CA



Variation and/or finish/color code may be required when ordering.

SERVICE PARTS

ITEM	PART NO.	DESCRIPTION
1	50281	Handle Subassembly, 6 Prong Hot
	50282	Handle Subassembly, 6 Prong Cold
2	50283	Screw, .190-24 UNC-3A x .125
3	34365	Bonnet
4	34264	O-Ring
5	34263	O-Ring
6	34265	Washer, .482 x .815
7	34320	Valve Stem L.H.
8	20314	Plunger, L.H.
9	20961	Washer, .185 x .505
10	34848	Screw, .164-32 UNC-2A x .281
11	34842	Sleeve
12	35119	Sleeve, Valve Seat
13	34364	Body, Lav Faucet
14	20776	Washer, 7/8 ID x 1-3/4 OD
15	32010	Nut, .5-14 NPSM
16	32751	Nut, .5-14 NPSM
17	57073	Connecting Rod Subassembly
18	57944	Escutcheon, Lift Rod
19	33843	Washer, 21/32 x 1-3/8
20	40620	Washer, .635 ID x .875 OD
21	32935	Locknut, 5/8-18 UNF
22	57422	Thumb Screw
23	73382	Link
24	40228	Spring Clip
25	57403	Retainer Nut
26	38745	Washer, .531 ID x .734 OD
27	38744	Washer, .484 ID x .748 OD
28	41312	Lever Assembly
29		Available in Service Kit Only
30	38676	O-Ring, 024 x 1.114
31	57408	Flange
32	57966	Gasket
33	40238	Washer
34	40076	Locknut
35	57405	Drain Body
36	41640	Tailpiece, 4-1/4" Long

SERVICE KITS

PART NO.	ITEM	QTY.	DESCRIPTION
56997-H			6 Prong Faucet Subassembly (Hot)
	1	1 ea.	Handle Subassembly, 6 Prong Hot
	2	1 ea.	Screw, .190-24 UNC-3A x .125
	3	1 ea.	Bonnet
	4	1 ea.	O-Ring
	5	1 ea.	O-Ring
	6	1 ea.	Washer, .482 x .815
	7	1 ea.	Valve Stem L.H.
	8	1 ea.	Plunger, L.H.
	9	1 ea.	Washer, .185 x .505
	10	1 ea.	Screw, .164-32 UNC-2A x .281
	11	1 ea.	Sleeve
	12	1 ea.	Sleeve, Valve Seat
	13	1 ea.	Body, Lav Faucet
	14	1 ea.	Washer, 7/8 ID x 1-3/4 OD
	15	1 ea.	Nut, .5-14 NPSM
	16	1 ea.	Nut, .5-14 NPSM
56998-C			6 Prong Faucet Subassembly (Cold)
	1	1 ea.	Handle Subassembly, 6 Prong Cold
	2	1 ea.	Screw, .190-24 UNC-3A x .125
	3	1 ea.	Bonnet
	4	1 ea.	O-Ring
	5	1 ea.	O-Ring
	6	1 ea.	Washer, .482 x .815
	7	1 ea.	Valve Stem L.H.
	8	1 ea.	Plunger, L.H.
	9	1 ea.	Washer, .185 x .505
	10	1 ea.	Screw, .164-32 UNC-2A x .281
	11	1 ea.	Sleeve
	12	1 ea.	Sleeve, Valve Seat
	13	1 ea.	Body, Lav Faucet
	14	1 ea.	Washer, 7/8 ID x 1-3/4 OD
	15	1 ea.	Nut, .5-14 NPSM
	16	1 ea.	Nut, .5-14 NPSM
22950			Stem & Plunger Assembly
	5	1 ea.	O-Ring
	6	1 ea.	Washer, .482 x .815
	7	1 ea.	Valve Stem L.H.
	8	1 ea.	Plunger, L.H.
	9	1 ea.	Washer, .185 x .505
	10	1 ea.	Screw, .164-32 UNC-2A x .281
22947			Plunger Subassembly
	8	1 ea.	Plunger, L.H.
	9	1 ea.	Washer, .185 x .505
	10	1 ea.	Screw, .164-32 UNC-2A x .281
24822			Seat & Sleeve Assembly
	11	1 ea.	Sleeve
	12	1 ea.	Sleeve, Valve Seat
57932			Hardware Kit
	19	1 ea.	Washer, 21/32 x 1-3/8
	20	1 ea.	Washer, .635 ID x .87
	21	1 ea.	Locknut, 5/8-18 UNF
58156			Drain Hardware Assembly
	22	1 ea.	Thumb Screw
	23	1 ea.	Link
	24	1 ea.	Spring Clip
	25	1 ea.	Retainer Nut
	26	1 ea.	Washer, .531 ID x .734 OD
	27	2 ea.	Washer, .484 ID x .748 OD
	28	1 ea.	Lever Assembly
58153			Drain Assembly, Brass
	29	1 ea.	Stopper Assembly, Brass
	30	1 ea.	O-Ring, 024 x 1.114
	31	1 ea.	Flange
	32	1 ea.	Gasket
	33	1 ea.	Washer
	34	1 ea.	Locknut
	35	1 ea.	Drain Body
58155			Stopper Assembly, Brass
	29	1 ea.	Stopper Kit, Brass
	30	1 ea.	O-Ring, 024 x 1.114

Variation and/or finish/color code may be required when ordering.