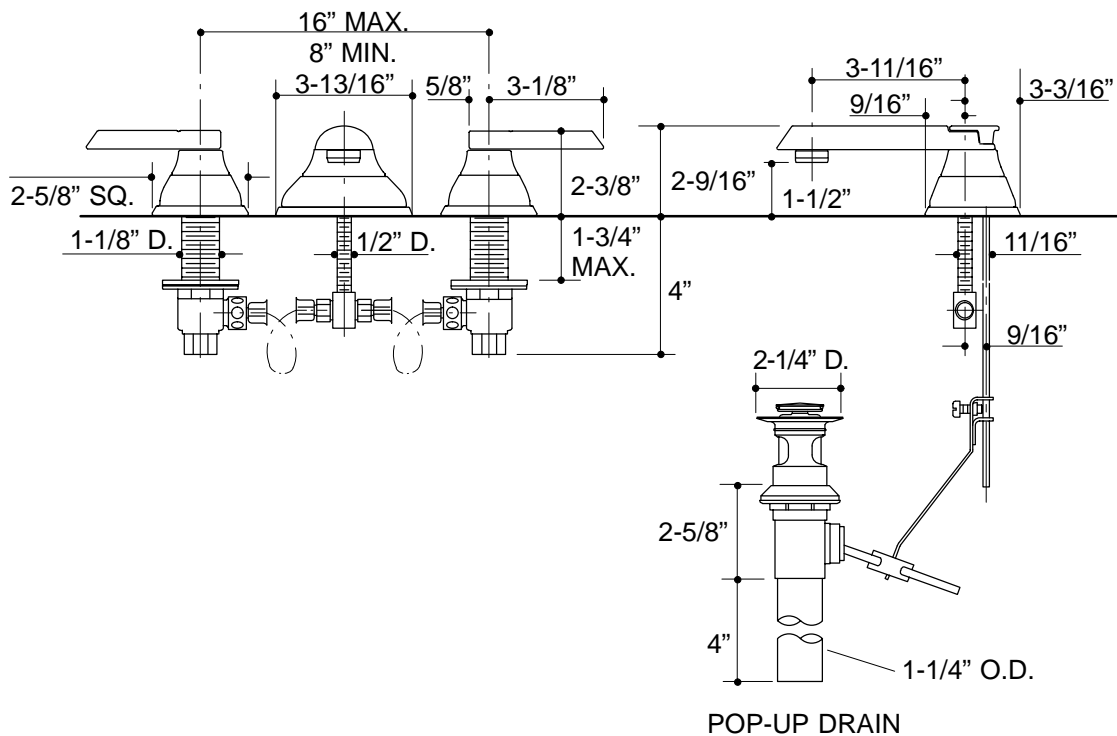


## Ordering Information

Applicable faucet:	
Complete	K-6402-4
Multi-piece*	K-6402-4B
Accessories/hardware:	
Decorative inserts	K-17202
*Requires decorative inserts.	
<b>ADA</b> Lever handles are ADA compliant	



316

**K-6402** Neuville™ Lavatory Faucet  
112853-1-AA (9619)

**KOHLER®**

**NOTES:**