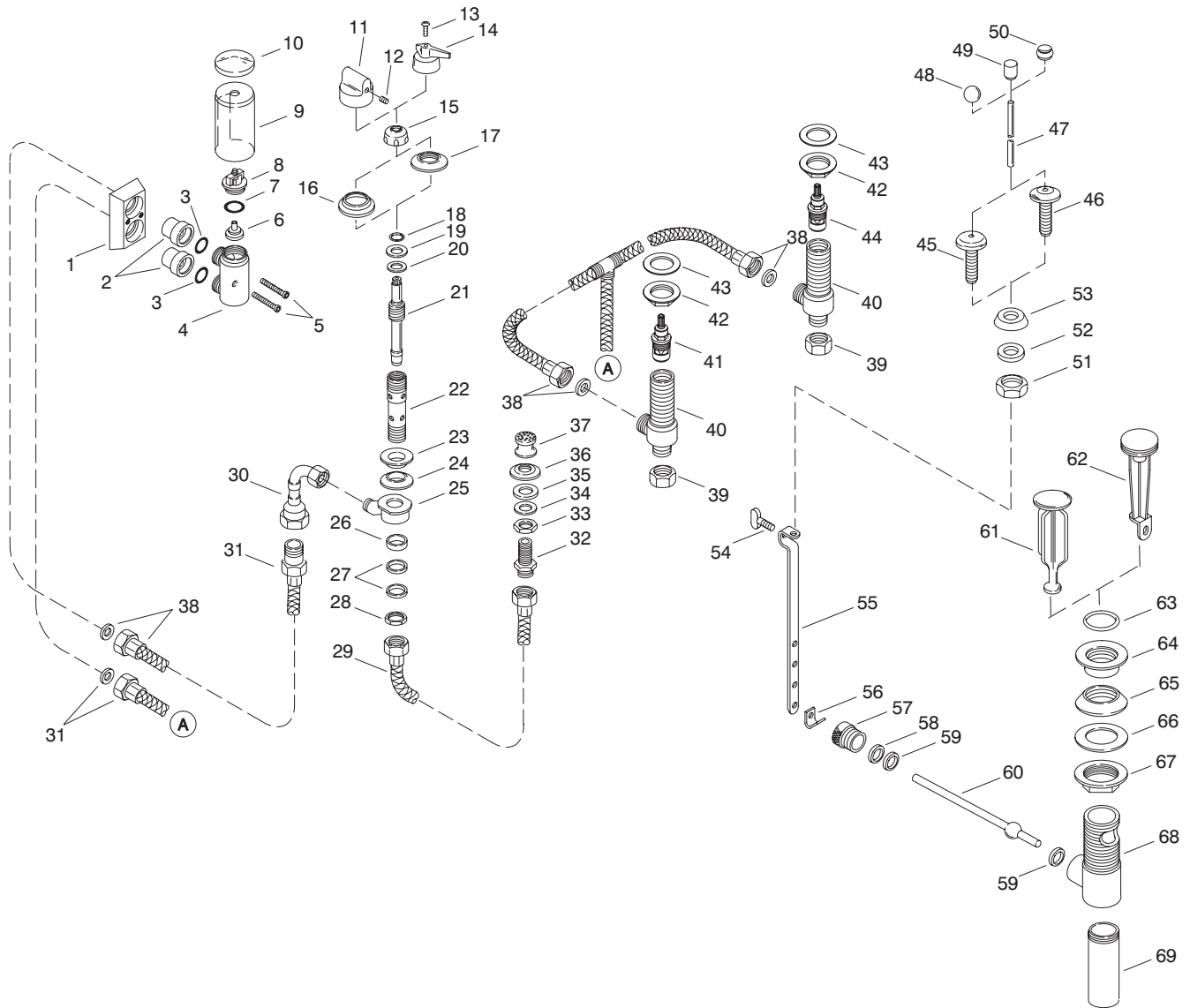


KOHLER® SERVICE PARTS

BIDET BASE FAUCETS
K-6405-KW-**-AA,
K-6404-KW-**-AA, K-6408-KW-**-AA



Variation and/or finish/color code may be required when ordering.

SERVICE PARTS

ITEM NO.	PART NO.	DESCRIPTION
1	21280	Bracket, Wall
2	21276	Cover, Vacuum Breaker
3	34300	O-Ring, 018
4		Available in Service Kit Only
5	21279	Screw .190-24 UNC-2A x 1.50
6	56436	Float Assembly
7	21271	O-Ring, 022
8	21278	Cap Assembly
9		Available in Service Kit Only
10	21281	Cover For 2" Diameter Shroud
11	42706	Handle, Transfer Valve
12	34453	Screw, .164-32 UNC-3A x .188
13	33357	Screw, 8-32 NC-2A x .563
14	41946	Handle and Bonnet
15	34465	Nut, 1-20 UNEF-2B
16	42705	Escutcheon, Transfer Valve
17	34328	Flange
18	34117	O-Ring, 205
19	39881	Valve Stem Packing
20	33331	Washer, 15/32 x .844
21	34470	Valve Stem
22	48797	Body
23	48808	Washer
24	50843	Washer
25	56697	Supply Body Assembly
26	48812	Washer
27	48813	Washer
28	32010	Nut, .5-14 NPSM
29	59435	Connector Hose Assembly
30	49223	Tube Assembly
31	50374	Braided Hose and Washer
32	56702	Shank, Spray Head
33	48753	Nut, .625-16 UNS-2B
34	48755	Washer
35	48754	Washer
36	48805	Flange
37	48609	Spray Subassembly
38	58254	Hose, Tee
39	32751	Nut, 5-14 NPSM
40	58076	Valve Assembly, Side 1/2"
41	30430	Ceramic Valve (Clockwise Close)
42	50903	Nut, 1.125-16 UNS-2B
43	32060	Washer, 1-1/4 ID
44	30431	Ceramic Valve (Counterclockwise Close)
45	59600	Escutcheon, Lift Rod
46	57944	Escutcheon, Lift Rod
47	21220	Lift Rod
48	58635	Lift Knob, Ball
49	42688	Lift Knob, Cylinder
50	36636	Lift Knob, IV Georges
51	32935	Nut, Lock 5/8-18 UNF
52	40620	Washer, Brass
53	33843	Tapered Washer
54	57422	Thumb Screw
55	58068	Link
56	40228	Spring Clip
57	57403	Retainer Nut
58	38745	Washer, .531 ID x .734 OD
59	38744	Washer, .484 ID x .748 OD
60	41312	Lever, Subassembly
61	58155	Stopper Assembly, Brass
62	58154	Stopper Assembly, Plastic
63	38676	O-Ring, .024 x 1.114
64	57408	Flange, Drain
65	57966	Gasket, Drain
66	40238	Washer
67	40076	Nut, Lock
68	57405	Drain Body
69	41640	Tailpiece, 4-1/4"

SERVICE KITS

PART NO.	ITEM NO.	QTY.	DESCRIPTION	
21289			Body Assembly, Vacuum Breaker	
	3	2 ea.	O-Ring, 018	
	4	1 ea.	Body Assembly, Vacuum Breaker	
	6	1 ea.	Float Assembly	
	7	1 ea.	O-Ring, 022	
	8	1 ea.	Cap Assembly	
	21287			Shroud and Cover Assembly
		9	1 ea.	Shroud
10		1 ea.	Cover For 2" Diameter Shroud	

Variation and/or finish/color code may be required when ordering.