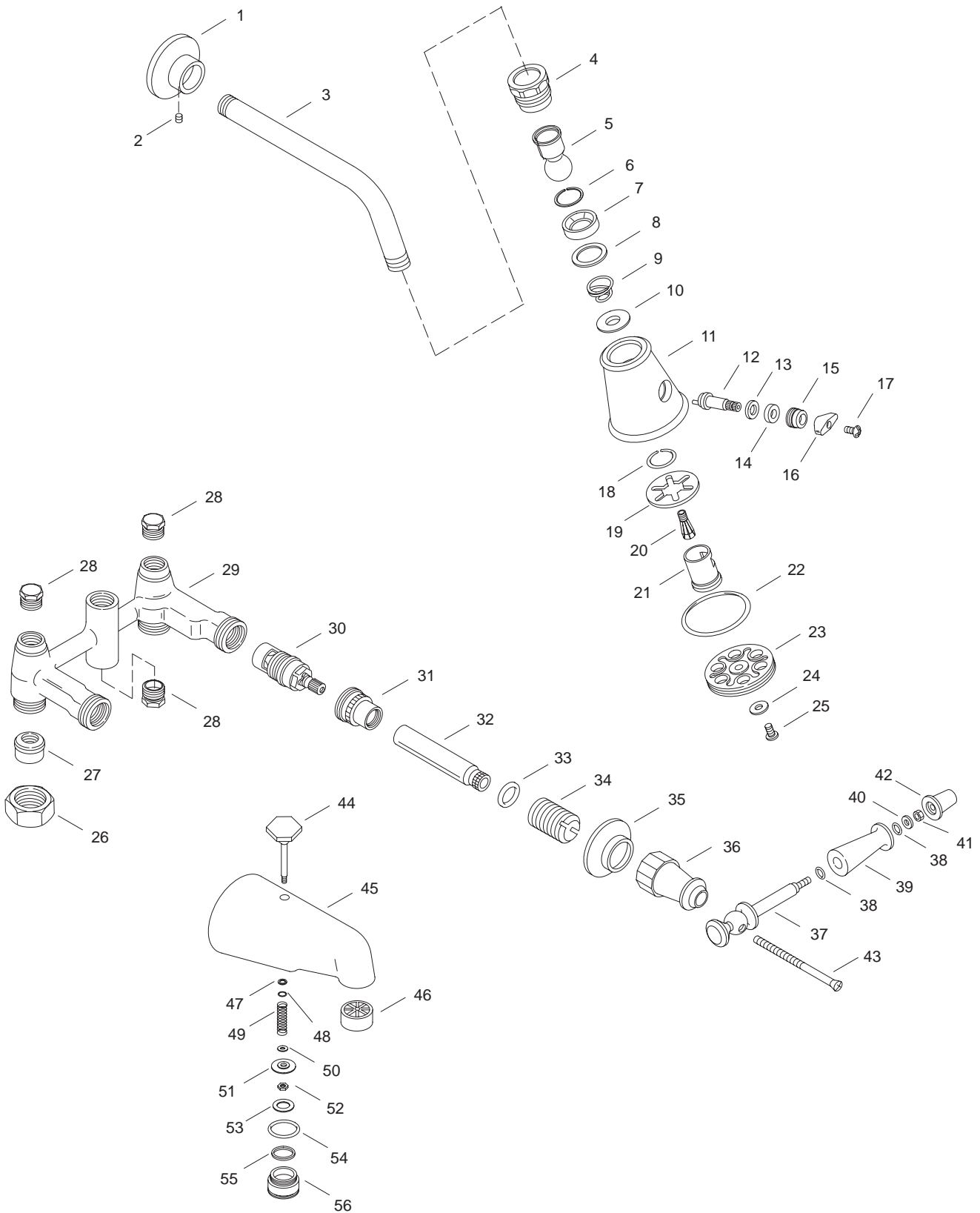


KOHLER[®] SERVICE PARTS

ANTIQUE™
BATH AND SHOWER FAUCETS
K-120-CV-**,
K-120-CV-**-AA, K-120-CV-**-BA



Variation and/or finish/color code may be required when ordering.

SERVICE PARTS

ITEM NO.	PART NO.	DESCRIPTION
1	22911	Flange
2	32966	Screw, 8-32 NC-2A x .188
3	24898	Shower Arm
4	29417	Locknut, Multi-Spray Head
5	57346	Ball Joint Assembly
6	52843	Split Washer
7	24981	Packing for Showerhead
8	29266	Washer, 5/16" x 1-11/64"
9	29497	Spring, Conical
10	29520	Washer, 1/2" ID 1.300 OD
11	29544	Showerhead Body and Guide
12	29426	Crank for Multi-Stream Showerhead
13	35719	Washer, .390 ID x .590 OD
14	29549	Crank, Packing
15	29548	Nut, Packing 5/8"-32 NS
16	29508	Handle
17	29476	Screw, 6-32 NC-2A x .313
18	29424	Snap Ring
19	29428	Washer, Spring .892 ID x 2 OD
20	29420	Plunger, Shower
21	29422	Crank Tube
22	29429	O-Ring, 140
23	58003	Face, Showerhead
24	29501	Washer, 17/64" ID x 1/2" OD
25	29418	Screw, .250-20 UNC-2A x .625
26	24003	Nut, 1.25-14 NS -2B
27	24015	Union Joint
28	34191	Plug
29	40462	Yoke
30	30430	Ceramic Valve (Clockwise Close)
	30431	Ceramic Valve (Counterclockwise Close)
31	40465	Stem Bonnet
32	40464	Stem Extension
33	40466	Washer, .488 ID x .563 OD
34	40467	Packing Sleeve
35	42275	Escutcheon
36	40461	Skirt
37	21254	Handle, Antique Small
38	51679	O-Ring
39	21256	Sleeve, Antique Small
40	21251	Washer, .172 x 7/16"
41	21259	Nut, 8-32NC-2B
42	21258	End Cap
43	40492	Screw, #8-32 x 2-7/8"
44	20536	Lift Rod Subassembly
45	38677	Diverter Spout Assembly
46	38808	Bath Stream Breaker
47	32698	O-Ring, 010
48	20728	Washer, .270 x 3/8"
49	20494	Spring
50	51176	Washer
51	59347	Seal Plate Diverter
52	41517	Nut, 10-24 NC-2B
53	51290	Gasket
54	38676	O-Ring, -024 x 1.114
55	38677	Gasket, 1.1138 ID x 1.245 OD
56	38675	Cap, Diecast Diverter Spout

SERVICE KITS

PART NO.	ITEM NO.	QTY.	DESCRIPTION
20345			Escutcheon with Screw
	1	1 ea.	Flange
	2	1 ea.	Screw, 8-32 NC-2A x .188
20350			Shower Arm Assembly
	1	1 ea.	Flange
	2	1 ea.	Screw, 8-32 NC-2A x .188
	3	1 ea.	Shower Arm
58305			Showerhead Assembly
	4	1 ea.	Locknut, Multi-Spray Head
	5	1 ea.	Ball Joint Assembly
	6	1 ea.	Split Washer
	7	1 ea.	Packing for Showerhead
	8	1 ea.	Washer, 5/16" x 1-11/64"
	9	1 ea.	Washer, 1/2" ID 1.300 OD
	10	1 ea.	Washer, 1/2" ID 1.300 OD
	11	1 ea.	Showerhead Body and Guide
	12	1 ea.	Crank for Multi-Stream Showerhead
	13	1 ea.	Washer, .390 ID x .590 OD
	14	1 ea.	Crank, Packing
	15	1 ea.	Nut, Packing 5/8"-32 NS
	16	1 ea.	Handle
	17	1 ea.	Screw, 6-32 NC-2A x .313
	18	1 ea.	Snap Ring
	19	1 ea.	Washer, Spring .892 ID x 2 OD
	20	1 ea.	Plunger, Shower
	21	1 ea.	Crank Tube
	22	1 ea.	O-Ring, 140
	23	1 ea.	Face, Showerhead
	24	1 ea.	Washer, 17/64" ID x 1/2" OD
	25	1 ea.	Screw, .250-20 UNC-2A x .625
40388			Yoke Subassembly
	26	2 ea.	Nut, 1.25-14 NS -2B
	27	2 ea.	Union Joint
	28	2 ea.	Plug
	29	1 ea.	Yoke
	30	1 ea.	Ceramic Valve (Clockwise Close)
		1 ea.	Ceramic Valve (Counterclockwise Close)
	31	2 ea.	Stem Bonnet
40460			Handle Subassembly, Antique
			Escutcheon
	35	1 ea.	Skirt
	36	1 ea.	Skirt
	37	1 ea.	Handle, Antique Small
	38	1 ea.	O-Ring
	39	1 ea.	Sleeve, Antique Small
	40	1 ea.	Washer, .172 x 7/16"
	41	1 ea.	Nut, 8-32NC-2B
	42	1 ea.	End Cap
	43	1 ea.	Screw, #8-32 x 2-7/8"
38776			Diverter Spout Assembly
	44	1 ea.	Lift Rod Subassembly
	45	1 ea.	Diverter Spout Assembly
	46	1 ea.	Bath Stream Breaker
	47	1 ea.	O-Ring, 010
	48	1 ea.	Washer, .270 x 3/8"
	49	1 ea.	Spring
	50	1 ea.	Washer
	51	1 ea.	Seal Plate Diverter
	52	1 ea.	Nut, 10-24 NC-2B
	53	1 ea.	Gasket
	54	1 ea.	O-Ring, -024 x 1.114
	55	1 ea.	Gasket, 1.1138 ID x 1.245 OD
	56	1 ea.	Cap, Diecast Diverter Spout

Variation and/or finish/color code may be required when ordering.