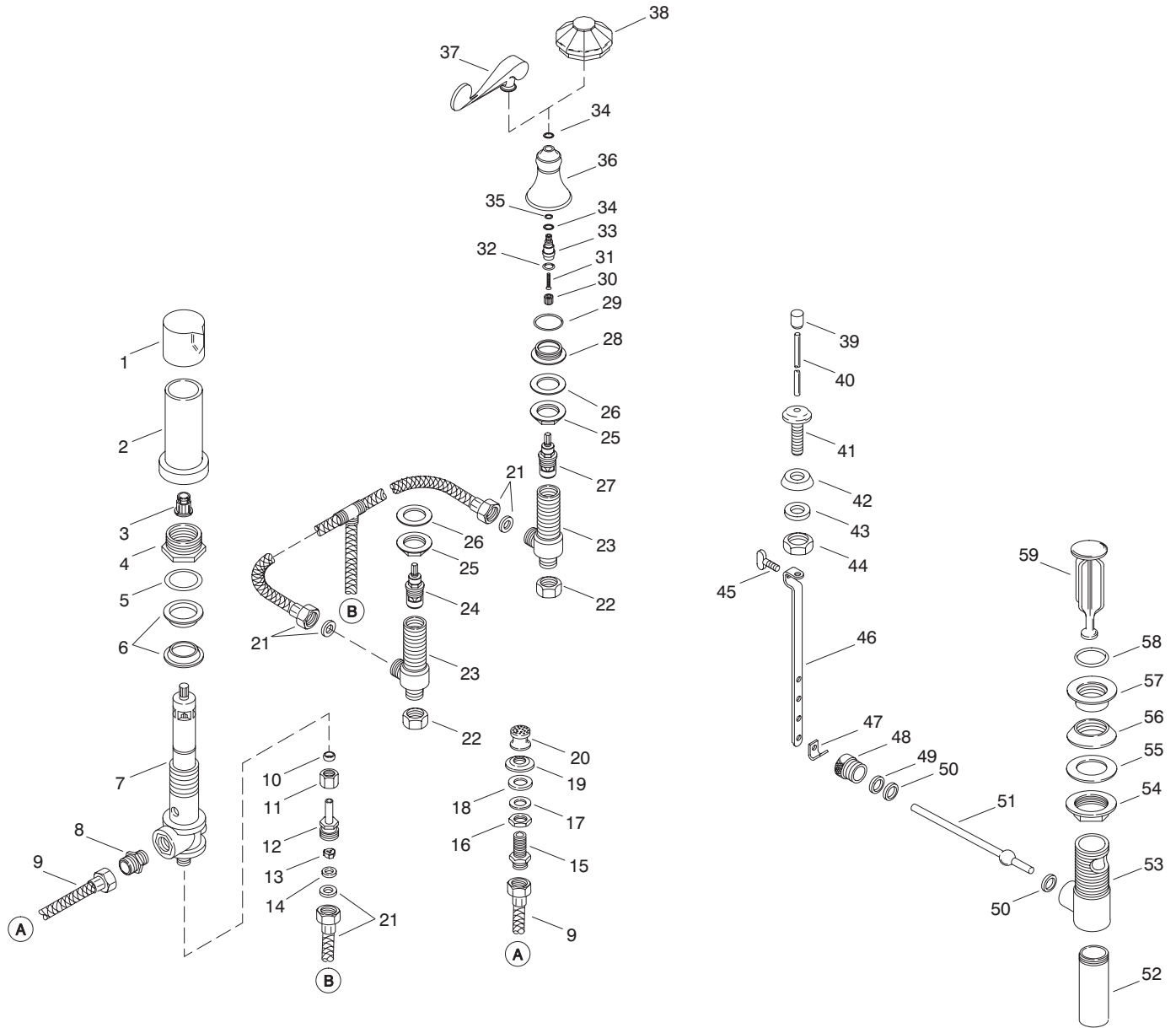


KOHLER[®] SERVICE PARTS

REVIVAL™ BIDET FAUCETS
K-16132-4-**-AA, K-16132-8-**-AA



Variation and/or finish/color code may be required when ordering.

SERVICE PARTS

ITEM NO.	PART NO.	DESCRIPTION
1	57929	Handle
2	57930	Escutcheon, Threaded
3	22325	Spline Insert
4		Available In Service Kit Only
5		Available In Service Kit Only
6		Available In Service Kit Only
7	59707	Valve, Transfer W/Vacuum Breaker
8	57936	Pipe Fitting, 3/8M x 1/2M
9	59435	Connector Hose Assembly
10	32738	Sleeve, Compression Coupling
11	32739	Nut, .562-24 NEF-2B
12	57940	Adapter And Connection Subassembly
13	57994	Flow Control
14	51243	Washer, Rubber
15	56702	Shank, Spray Head
16	48753	Nut, .625-16 UNS-2B
17	48755	Washer, 11/16" x 1-5/32" x .031"
18	48754	Washer, Rubber
19	48805	Flange
20	48609	Spray Subassembly
21	58254	Hose, Tee
22	32751	Nut, .5-14 NPSM
23	58076	Valve Assembly, Side 1/2"
24	30430	Ceramic Valve (Clockwise Close)
25	50903	Nut, 1.125-16 UNS-2B
26	32060	Washer, 1-1/4 ID
27	30431	Ceramic Valve (Counterclockwise Close)
28	59425	Nut, Escutcheon
29	38676	O-Ring, -.024 x 1.114
30	59027	Spline Adapter
31	59429	Screw, 6-32 x 1.00
32	42160	O-Ring
33	59430	Extension, Stem
34	32698	O-Ring, 010
35	59428	Skirt
36	59427	Washer, .525 OD x .018
37	58753	Handle, Lever
38	58742	Handle, Facetted
39	42688	Lift Knob, Threaded
40	21220	Lift Rod "C" Spout
41	59600	Escutcheon, Lift Rod
42	33843	Washer, 21/32" x 1-3/8"
43	40620	Washer, .635 ID x .875 OD
44	32935	Locknut, 5/8-18 UNF
45	57422	Thumb Screw
46	58068	Link
47	40228	Spring Clip
48	57403	Retainer Nut
49	38745	Washer, .531 ID x .734 OD
50	38744	Washer, .484 ID x .748 OD
51	41312	Lever Subassembly
52	41640	Tailpiece, 4-1/4"
53	57405	Drain Body
54	40076	Nut, Lock
55	40238	Washer
56	57966	Gasket, Drain
57	57408	Flange, Drain
58	38676	O-Ring, -.024 x 1.114
59	58155	Stopper Assembly, Brass

SERVICE KITS

PART NO.	ITEM NO.	QTY.	DESCRIPTION
59615			Hardware Kit
	4	1 ea.	Plastic Nut
	5	1 ea.	Rigid Washer
	6	2 ea.	Beveled Washer
57935			Hardware, Fixture Mounted Valve
	10	1 ea.	Sleeve, Compression Coupling
	11	1 ea.	Nut, .562-24 NEF-2B
	12	1 ea.	Adapter And Connection Subassembly
	13	1 ea.	Flow Control
	14	1 ea.	Washer
57937			Adapter And Flow Control Assembly
	12	1 ea.	Adapter And Connection Subassembly
	13	1 ea.	Flow Control
	14	1 ea.	Washer
73605			Lever Handle Assembly
	28	2 ea.	Nut, Escutcheon
	29	2 ea.	O-Ring, -.024 x 1.114
	30	2 ea.	Spline Adapter
	31	2 ea.	Screw, 6-32 x 1.00
	32	2 ea.	O-Ring
	33	2 ea.	Extension Stem
	34	2 ea.	O-Ring, 010
	35	2 ea.	Skirt
	36	4 ea.	Washer, .525 OD x .018
	37	2 ea.	Handle, Lever
58842			Lever Handle Subassembly
	31	1 ea.	Screw, 6-32 x 1.00
	32	1 ea.	O-Ring
	33	1 ea.	Extension Stem
	34	1 ea.	O-Ring, 010
	35	1 ea.	Skirt
	36	2 ea.	Washer, .525 OD x .018
	37	1 ea.	Handle, Lever
73606			Facetted Handle Assembly
	28	2 ea.	Nut, Escutcheon
	29	2 ea.	O-Ring, -.024 x 1.114
	30	2 ea.	Spline Adapter
	31	2 ea.	Screw, 6-32 x 1.00
	32	2 ea.	O-Ring
	33	2 ea.	Extension Stem
	34	2 ea.	O-Ring
	35	2 ea.	Skirt
	36	4 ea.	Washer, .525 OD x .018
	38	2 ea.	Handle, Facetted
59459			Facetted Handle Subassembly
	31	1 ea.	Screw, 6-32 x 1.00
	32	1 ea.	O-Ring
	33	1 ea.	Extension Stem
	34	1 ea.	O-Ring, 010
	35	1 ea.	Skirt
	36	2 ea.	Washer, .525 OD x .018
	38	1 ea.	Handle, Facetted

Variation and/or finish/color code may be required when ordering.