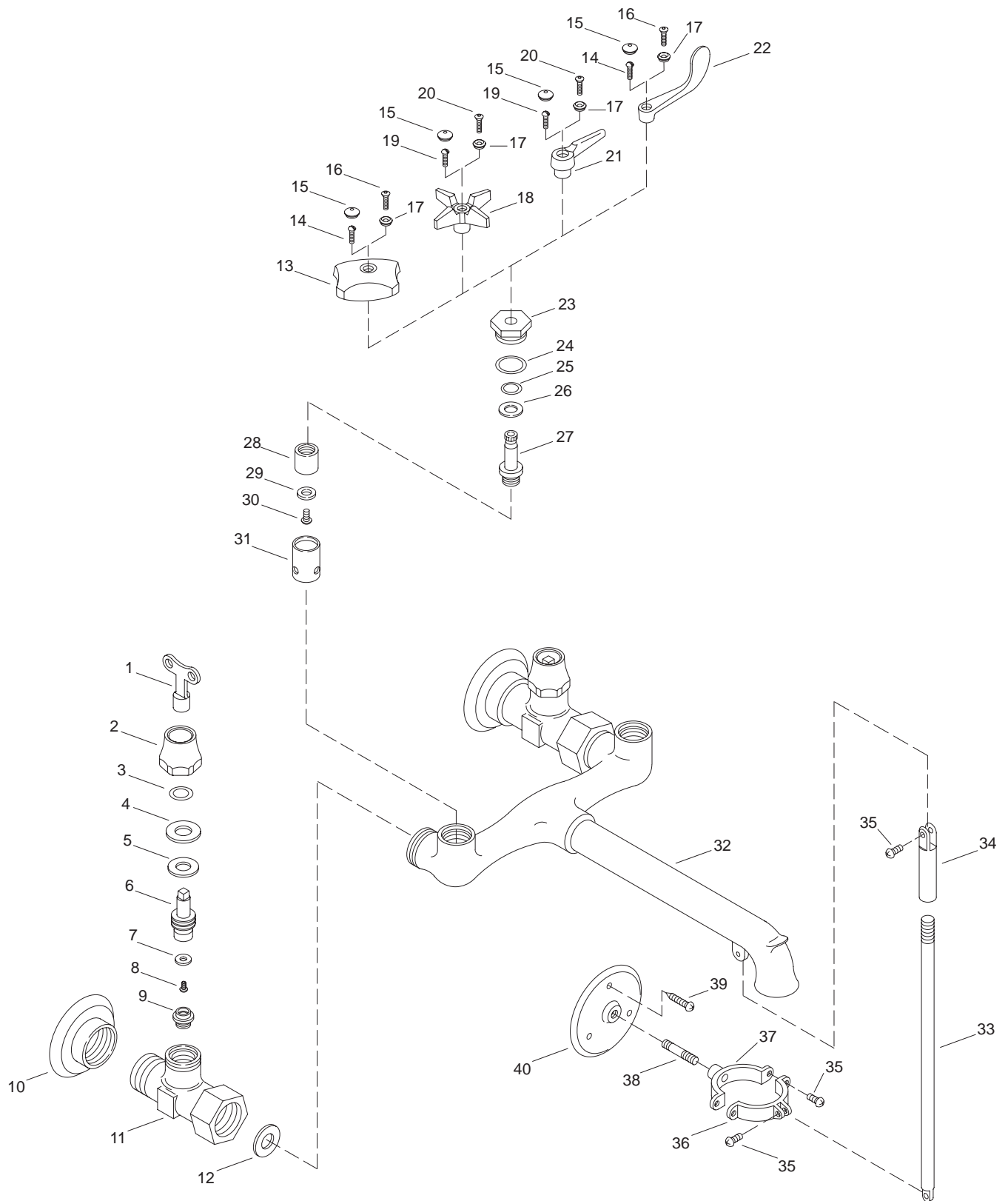


KOHLER® SERVICE PARTS

TRITON™ SERVICE SINK FAUCET
7309-2A-**-AA, 7309-3A-**-AA,
7309-4A-**-AA, 7309-5A-**-AA



Variation and/or finish/color code may be required when ordering.

SERVICE PARTS

ITEM	PART NO.	DESCRIPTION
1	32338-C	Loose Key
2	32486	Packing Nut
3	34117	O-Ring
4	39896	Packing, Valve Stem
5	39540	Washer, Brass
6	32252	Valve Stem
7	20961	Washer
8	31490	Screw
9	40602	Renewable Seat
10	39708	Flange
11		Available In Service Kit Only
12	40718	Washer
13	52643	Handle, Standard, Small
14	56074	Screw 0.164-32 UNC x 0.31
15	52622	Button Cap
16	58891-S	Screw, 8-32 x 0.51 SHOS
17	52623-C	Button Cap, Blue
	52623-H	Button Cap, Red
18	52635	Handle, 4-Arm
19	31490	Screw, 0.164-32 UNC x 0.50
20	58892-S	Screw, 8-32 x 0.67 SHOS
21	52631	Lever Handle
22	53339	4" Blade Handle
23	34365	Bonnet
24	34264	O-Ring
25	34263	O-Ring
26	34265	Washer, Brass
27	34319	Valve Stem (Counterclockwise Close)
	34320	Valve Stem (Clockwise Close)
28	34844	Plunger R.H.
	34862	Plunger L.H.
29	20961	Washer
30	34848	Screw
31	34822	Seat and Sleeve Assembly
32	34506	Body and Spout Assembly
33	48255	Rod
34	48252	Saddle
35	33625	Screw
36	73027	Bracket L.H.
37	73026	Bracket R.H.
38	24618	Nipple
39	24085	Screw
40	24571	Flange

SERVICE KITS

PART NO.	ITEM	QTY.	DESCRIPTION
31749-X			Stop Assembly
	2	1 ea.	Packing Nut
	3	1 ea.	O-Ring
	4	1 ea.	Packing, Valve Stem
	5	1 ea.	Washer, Brass
	6	1 ea.	Valve Stem
	7	1 ea.	Washer
	8	1 ea.	Screw
	9	1 ea.	Renewable Seat
	10	1 ea.	Flange
	11	1 ea.	Body Assembly

Variation and/or finish/color code may be required when ordering.