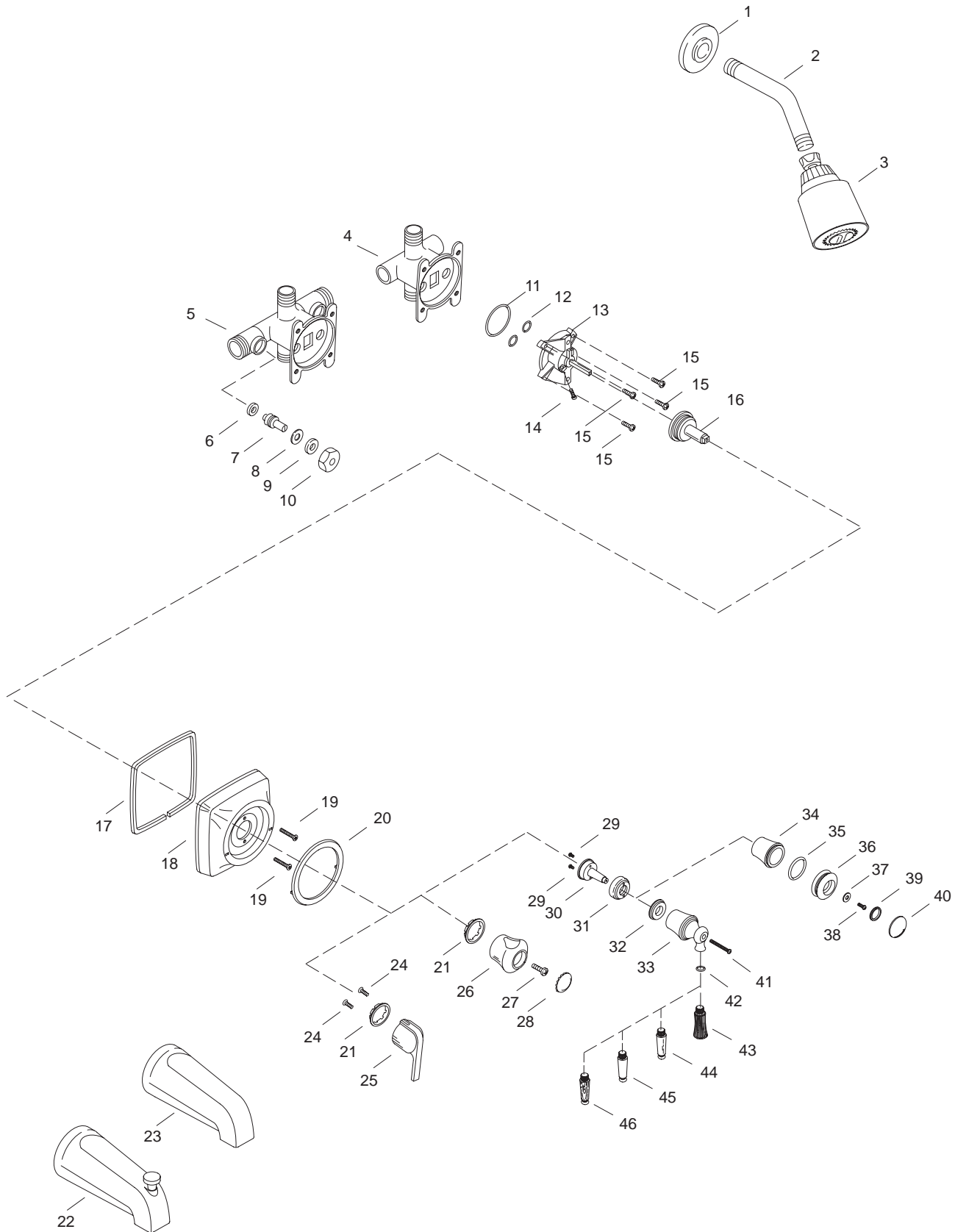


| K#              | Bath/Shower<br>Faucet | Shower/<br>Faucet | Bath/<br>Faucet | Valve<br>Only | IPS Spout        |          | Slip-Fit Spout   |          | Acrylic<br>Handle | Lever<br>Handle | Decorator<br>Series | Screw<br>Stops |
|-----------------|-----------------------|-------------------|-----------------|---------------|------------------|----------|------------------|----------|-------------------|-----------------|---------------------|----------------|
|                 |                       |                   |                 |               | Non-<br>Diverter | Diverter | Non-<br>Diverter | Diverter |                   |                 |                     |                |
| K-15101-**-DC   | X                     |                   |                 |               | X                |          |                  |          | X                 |                 |                     |                |
| K-15101-S-**-DC | X                     |                   |                 |               |                  |          | X                |          | X                 |                 |                     |                |
| K-15103-**-DC   | X                     |                   |                 |               | X                |          |                  |          | X                 |                 |                     | X              |
| K-15103-S-**-DC | X                     |                   |                 |               |                  |          | X                |          | X                 |                 |                     | X              |
| K-15105-**-DC   | X                     |                   |                 |               | X                |          |                  |          |                   | X               |                     |                |
| K-15105-S-**-DC | X                     |                   |                 |               |                  |          | X                |          |                   | X               |                     |                |
| K-15107-**-DC   | X                     |                   |                 |               | X                |          |                  |          |                   | X               |                     | X              |
| K-15107-S-**-DC | X                     |                   |                 |               |                  |          | X                |          |                   | X               |                     | X              |
| K-15110-**-DB   |                       | X                 |                 |               |                  |          |                  |          | X                 |                 |                     |                |
| K-15112-**-DB   |                       | X                 |                 |               |                  |          |                  |          | X                 |                 |                     | X              |
| K-15114-**-DB   |                       | X                 |                 |               |                  |          |                  |          |                   | X               |                     |                |
| K-15116-**-DB   |                       | X                 |                 |               |                  |          |                  |          |                   | X               |                     | X              |
| K-15120-**-CC   |                       |                   | X               |               |                  | X        |                  |          | X                 |                 |                     |                |
| K-15120-S-**-CC |                       |                   | X               |               |                  |          |                  | X        | X                 |                 |                     |                |
| K-15121-**-CC   |                       |                   | X               |               |                  | X        |                  |          | X                 |                 |                     | X              |
| K-15121-S-**-CC |                       |                   | X               |               |                  |          |                  | X        | X                 |                 |                     | X              |
| K-15122-**-BB   |                       |                   |                 | X             |                  |          |                  |          | X                 |                 |                     |                |
| K-15124-**-BA   |                       |                   |                 | X             |                  |          |                  |          | X                 |                 |                     | X              |
| K-15126-**-BB   |                       |                   |                 | X             |                  |          |                  |          |                   | X               |                     |                |
| K-15128-**-BB   |                       |                   |                 | X             |                  |          |                  |          |                   | X               |                     | X              |
| K-15870-K-**-BB | X                     |                   |                 |               | X                |          |                  |          |                   |                 | X                   |                |
| K-15871-K-**-BB | X                     |                   |                 |               |                  |          | X                |          |                   |                 | X                   |                |
| K-15872-K-**-BB |                       | X                 |                 |               |                  |          |                  |          |                   |                 | X                   |                |
| K-15873-K-**-AB |                       |                   |                 | X             |                  |          |                  |          |                   |                 | X                   |                |

### Decorative Series – Faceplate/Handle

| K#               | Lever<br>Handle | Stacked<br>Handle | Acrylic<br>Insert | White Porcelain<br>Insert | Wood<br>Insert | Polished<br>Brass Insert | Polished<br>Chrome Insert |
|------------------|-----------------|-------------------|-------------------|---------------------------|----------------|--------------------------|---------------------------|
| K-15852-4R-**-AA | X               |                   | X                 |                           |                |                          |                           |
| K-15852-4P-**-AA | X               |                   |                   | X                         |                |                          |                           |
| K-15852-4S-**-AA | X               |                   |                   |                           | X              |                          |                           |
| K-15852-4M-**-AA | X               |                   |                   |                           |                |                          | X                         |
| K-15852-4N-**-AA | X               |                   |                   |                           |                | X                        |                           |
| K-15852-7M-**-AA |                 | X                 |                   |                           |                |                          | X                         |
| K-15852-7N-**-AA |                 | X                 |                   |                           |                | X                        |                           |

\*\* Variation and/or finish/color code may be required when ordering.



**\*\* Variation and/or finish/color code may be required when ordering.**

## SERVICE PARTS

| ITEM | PART NO. | DESCRIPTION                   |
|------|----------|-------------------------------|
| 1    | 20429**  | Flange, Shower Arm            |
| 2    | 51410**  | Shower Arm                    |
| 3    | 73670**  | Shower Head Assembly          |
| 4    | 71960    | Body, Valve, w/o Stop Bodies  |
| 5    | 71961    | Body, Valve, w/ Stop Bodies   |
| 6    | 20961    | Washer, .185 x .505           |
| 7    | 40287    | Stem, Stop                    |
| 8    | 40291    | Washer                        |
| 9    | 40288    | Packing                       |
| 10   | 40289    | Pack Nut                      |
| 11   | 71940    | O-Ring                        |
| 12   | 33993    | O-Ring                        |
| 13   |          | Available in Service Kit Only |
| 14   | 71968    | Screw, .190-32 UNF-2A x .750  |
| 15   | 71923    | Screw, .190-32 UNC-2A x .625  |
| 16   | 71906    | Stem Adapter                  |
| 17   | 71813    | Gasket Escutcheon OD          |
| 18   | 71949**  | Escutcheon Mixer              |
| 19   | 71946    | Screw, Phillips Oval Head     |
| 20   | 71911    | Face Plate, Mixer             |
| 21   | 71951    | Thrust Washer                 |
| 22   | 73666**  | Spout, IPS Diverter Bath      |
|      | 73668**  | Spout, Slip Diverter Bath     |
| 23   | 73667**  | Spout, IPS Bath               |
|      | 73669**  | Spout, Slip Bath              |
| 24   | 71018    | Screw, .190-24 UNC x .375     |
| 25   | 71947**  | Handle Lever                  |
| 26   | 71908    | Mixer Handle, Acrylic         |
| 27   | 70047    | Screw, #10-16 Self Tapping    |
| 28   | 71909    | Mixer Plug Button Marked      |
| 29   | 51966    | Screw, .190-24 UNC-2A         |
| 30   | 71906    | Stem Adapter                  |
| 31   | 71974**  | Cover                         |
| 32   | 71975    | Gasket, Alignment             |
| 33   | 71973**  | Handle, Lever Mixer           |
| 34   | 71980**  | Handle Skirt, Mixer           |
| 35   | 48694    | O-Ring                        |
| 36   | 71981**  | Handle Insert, Mixer          |
| 37   | 50567    | Washer, Brass                 |
| 38   | 70047    | Screw, #10                    |
| 39   | 58486    | Quad Ring                     |
| 40   | 70623**  | Handle Cap, Mixer             |
| 41   | 56249    | Screw                         |
| 42   | 33993    | O-Ring                        |
| 43   |          | Available in Service Kit Only |
| 44   |          | Available in Service Kit Only |
| 45   |          | Available in Service Kit Only |
| 46   |          | Available in Service Kit Only |

## SERVICE KITS

| PART NO. | ITEM | QTY.  | DESCRIPTION                  |
|----------|------|-------|------------------------------|
| 71969    |      |       | Valve, Mixer Kit             |
|          | 11   | 1 ea. | O-Ring                       |
|          | 12   | 2 ea. | O-Ring                       |
|          | 13   | 1 ea. | Mixing Valve Cartridge       |
|          | 14   | 1 ea. | Screw, .190-32 UNF-2A x .750 |
| 71904**  |      |       | Lever Handle Kit             |
|          | 21   | 1 ea. | Thrust Washer                |
|          | 24   | 2 ea. | Screw, .190-24 UNC x .375    |
|          | 25   | 1 ea. | Handle Lever                 |
| 30316    |      |       | Repair Kit, Acrylic Handle   |
|          | 21   | 1 ea. | Thrust Washer                |
|          | 26   | 1 ea. | Mixer Handle, Acrylic        |
|          | 27   | 1 ea. | Screw, #10-16 Self Tapping   |
|          | 28   | 1 ea. | Mixer Plug Button Marked     |
| 70592**  |      |       | Insert, Acrylic Subassembly  |
|          | 42   | 1 ea. | O-Ring                       |
|          | 43   | 1 ea. | Insert, Handle, Acrylic      |
| 70593**  |      |       | Insert, Brass Subassembly    |
|          | 42   | 1 ea. | O-Ring                       |
|          | 44   | 1 ea. | Insert, Handle, Brass        |
| 70591**  |      |       | Insert, Ceramic Subassembly  |
|          | 42   | 1 ea. | O-Ring                       |
|          | 45   | 1 ea. | Insert, Handle, Ceramic      |
| 70594**  |      |       | Insert, Wood Subassembly     |
|          | 42   | 1 ea. | O-Ring                       |
|          | 46   | 1 ea. | Insert, Handle, Wood         |

\*\* Variation and/or finish/color code may be required when ordering.

**\*\* Variation and/or finish/color code may be required when ordering.**