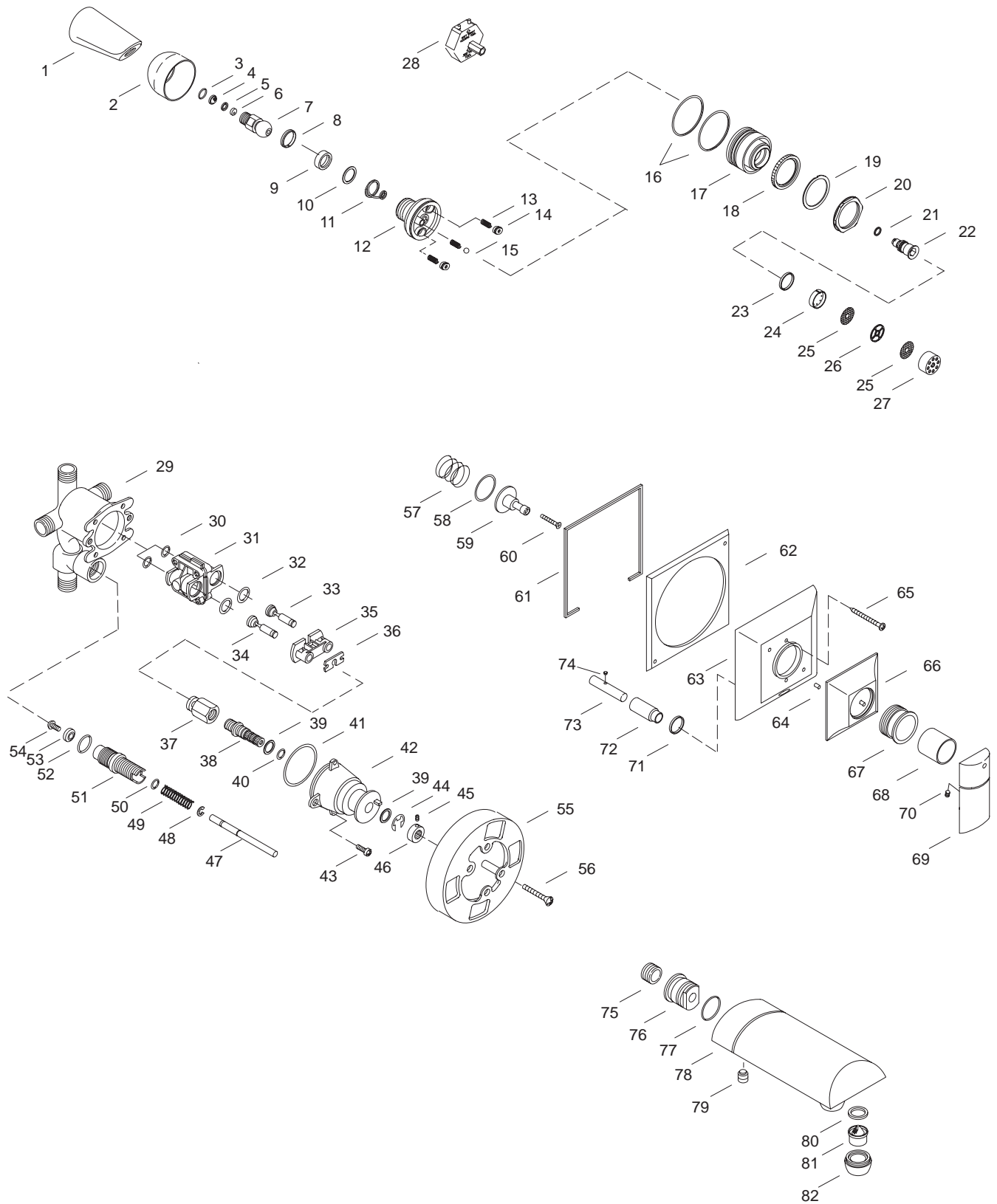


KOHLER® SERVICE PARTS

NEUVILLE™ WALL-MOUNT RITE-TEMP™ BATH AND SHOWER FAUCET K-6430-4B-**-AA, K-6470-4B-**-AA, K-17207-**-AA



Variation and/or finish/color code may be required when ordering.

SERVICE PARTS

ITEM	PART NO.	DESCRIPTION
1	48656	Shower Arm
2	56941	Outer Housing
3	40933	O-Ring
4	58038	Screen
5	54694	Retaining Collar
6	57994	Flow Control
7	57970	Ball Joint
8	52843	Split Washer
9	24981	Packing
10	29266	Washer
11	29497	Conical Spring
12	56977	Rear Housing Assembly
13	56937	Spring
14	56933	Inlet Seal
15	57345	Ball Bearing
16	56947	Grip Ring
17	56975	Front Housing Assembly
18	56931	Diffuser
19	56949	Thrust Washer
20	56939-58	Hex Nut
21	38634	O-Ring
22	56934	Center Post
23	56952	Gasket
24	56948	Aerator Plate
25	56950	Screen
26	56946	Spacer
27	56938-58	Aerator Housing
28	57453	Showerhead Tool
29	59686	Body and Diverter Subassembly
30	52480	O-Ring
31		Available in Service Kit Only
32	52479	O-Ring
33		Available in Service Kit Only
34		Available in Service Kit Only
35	52450	Retainer Plate
36	52454	Stem Bar
37	52455	Stem
38	52453	Spindle
39	52456	Washer
40	52457	O-Ring
41	52477	O-Ring
42	52451	Cap
43	21980	Screw, 250-20 UNC-2A x .500
44	50541	E-Ring
45	20925	Screw, .164-32 UNC-2A x .313
46	52452	Collar, Spindle
47	59681	Stem
48	50715	E-Ring
49	20494	Spring
50	20493	O-Ring
51	59680	Bonnet
52	40933	O-Ring
53	20866	Seat
54	20959	Screw, .164-32 UNC-2A x .500
55	58564	Plaster Guard
56	92586	Screw, .190-24 UNC-2A x 1.50
57	42286	Spring
58	59571	Washer
59	59572	Stem Extension
60	42410	Screw, #8-32 UNC x 1.25
61	71813	Escutcheon Gasket
62	57829	Escutcheon Base
63	57828	Escutcheon Center
64		Available in Service Kit Only
65	42139	Screw, #10-24 UNC x 2.75
66	57830	Escutcheon
67	57598	Retaining Nut
68	58232	Sleeve
69	57659	Handle
70	56283	Setscrew, #10-24 x .25

SERVICE PARTS

ITEM	PART NO.	DESCRIPTION
71	58245	Gasket
72	58231	Guide
73	59679	Button
74	58259	Setscrew, #-32 x .125
75	24354	Bushing Adapter, 1/2" x 3/4"
76	52139	Supply Bushing
77	52149	O-Ring
78	57880	Spout
79	52095	Screw, .438-14 UNC-2A
80	57319	Washer, 1.06 OD x .79 ID
81	57322	Aerator Assembly
82	57859	Nozzle

SERVICE KITS

PART NO.	ITEM	QTY.	DESCRIPTION	
500520			Pressure Balancing Body	
	30	1 ea.	O-Ring	
	31	1 ea.	Body Assembly	
	32	1 ea.	O-Ring	
76001			Cap Assembly/PMB	
	30	1 ea.	O-Ring	
	31	1 ea.	Body Assembly	
	32	1 ea.	O-Ring	
	33	1 ea.	Plunger, Hot	
	34	1 ea.	Plunger, Cold	
	35	1 ea.	Retainer Plate	
	36	1 ea.	Stem Bar	
	37	1 ea.	Stem	
	38	1 ea.	Spindle	
	39	1 ea.	Washer	
	40	1 ea.	O-Ring	
	41	1 ea.	O-Ring	
74895	42	1 ea.	Cap	
	43	2 ea.	Screw, .250-20 UNC-2A x .500	
	44	1 ea.	E-Ring	
	45	1 ea.	Screw, .164-32 UNC-2A x .313	
	46	1 ea.	Spindle Collar	
			Plunger Kit	
	33	1 ea.	Plunger, Hot	
	34	1 ea.	Plunger, Cold	
	41	1 ea.	O-Ring	
	76002			Cap Subassembly
33		1 ea.	Plunger, Hot	
34		1 ea.	Plunger, Cold	
35		1 ea.	Retainer Plate	
36		1 ea.	Stem Bar	
37		1 ea.	Stem	
38		1 ea.	Spindle	
39		1 ea.	Washer	
40		1 ea.	O-Ring	
41		1 ea.	O-Ring	
57832	42	1 ea.	Cap	
	44	1 ea.	E-Ring	
	45	1 ea.	Screw, .164-32 UNC-2A x .313	
	46	1 ea.	Spindle Collar	
			Escutcheon Assembly	
	63	1 ea.	Escutcheon Center	
	71	1 ea.	Gasket	
	64	2 ea.	Pin	
	58547			Hardware Kit
		64	6 ea.	Pin

Variation and/or finish/color code may be required when ordering.