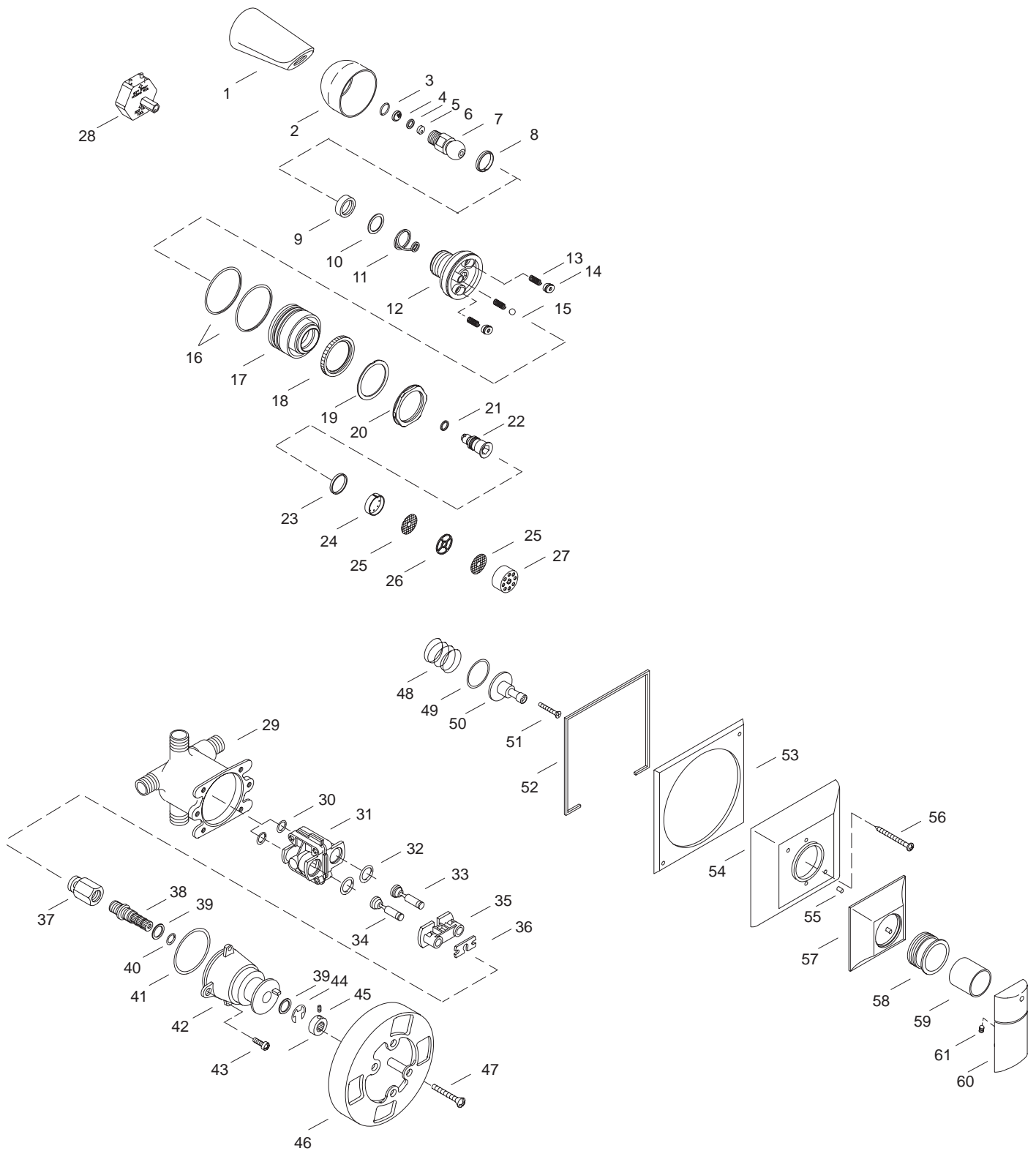


# KOHLER<sup>®</sup> SERVICE PARTS

NEUVILLE™ WALL-MOUNT  
RITE-TEMP™ SHOWER FAUCET  
K-6415-4B-\*\*-AA, K-6469-4B-\*\*-AA,  
K-17206-\*\*-AA



Variation and/or finish/color code may be required when ordering.

### SERVICE PARTS

ITEM	PART NO.	DESCRIPTION
1	48656	Shower Arm
2	56941	Outer Housing
3	40933	O-Ring
4	58038	Screen
5	54694	Retaining Collar
6	57994	Flow Control
7	57970	Ball Joint
8	52843	Split Washer
9	24981	Packing
10	29266	Washer
11	29497	Conical Spring
12	56977	Rear Housing Assembly
13	56937	Spring
14	56933	Inlet Seal
15	57345	Ball Bearing
16	56947	Grip Ring
17	56975	Front Housing Assembly
18	56931	Diffuser
19	56949	Thrust Washer
20	56939-58	Hex Nut
21	38634	O-Ring
22	56934	Center Post
23	56952	Gasket
24	56948	Aerator Plate
25	56950	Screen
26	56946	Spacer
27	56938-58	Aerator Housing
28	57453	Showerhead Tool
29	71916	Body, Pressured Balanced
30	52480	O-Ring
31		Available in Service Kit Only
32	52479	O-Ring
33		Available in Service Kit Only
34		Available in Service Kit Only
35	52450	Retainer Plate
36	52454	Stem Bar
37	52455	Stem
38	52453	Spindle
39	52456	Washer
40	52457	O-Ring
41	52477	O-Ring
42	52451	Cap
43	21980	Screw, 250-20 UNC-2A x .500
44	50541	E-Ring
45	20925	Screw, .164-32 UNC-2A x .313
46	52452	Collar, Spindle
47	92586	Screw, .190-24 UNC-2A x 1.50
48	42286	Spring
49	59571	Washer
50	59572	Stem Extension
51	42410	Screw, #8-32 UNC x 1.25
52	71813	Escutcheon Gasket
53	57829	Escutcheon Base
54	57827	Escutcheon Center
55		Available in Service Kit Only
56	42139	Screw, #10-24 UNC x 2.75
57	57830	Escutcheon
58	57598	Retaining Nut
59	58232	Sleeve
60	57659	Handle
61	56283	Setscrew, #10-24 x .25

### SERVICE KITS

PART NO.	ITEM	QTY.	DESCRIPTION
500520			Pressure Balancing Body
	30	1 ea.	O-Ring
	31	1 ea.	Body Assembly
	32	1 ea.	O-Ring
76001			Cap Assembly/PMB
	30	1 ea.	O-Ring
	31	1 ea.	Body Assembly
	32	1 ea.	O-Ring
	33	1 ea.	Plunger, Hot
	34	1 ea.	Plunger, Cold
	35	1 ea.	Retainer Plate
	36	1 ea.	Stem Bar
	37	1 ea.	Stem
	38	1 ea.	Spindle
	39	1 ea.	Washer
	40	1 ea.	O-Ring
	41	1 ea.	O-Ring
	42	1 ea.	Cap
	43	2 ea.	Screw, .250-20 UNC-2A x .500
	44	1 ea.	E-Ring
	45	1 ea.	Screw, .164-32 UNC-2A x .313
	46	1 ea.	Spindle Collar
74895			Plunger Kit
	33	1 ea.	Plunger, Hot
	34	1 ea.	Plunger, Cold
	41	1 ea.	O-Ring
76002			Cap Subassembly
	33	1 ea.	Plunger, Hot
	34	1 ea.	Plunger, Cold
	35	1 ea.	Retainer Plate
	36	1 ea.	Stem Bar
	37	1 ea.	Stem
	38	1 ea.	Spindle
	39	1 ea.	Washer
	40	1 ea.	O-Ring
	41	1 ea.	O-Ring
	42	1 ea.	Cap
	44	1 ea.	E-Ring
	45	1 ea.	Screw, .164-32 UNC-2A x .313
	46	1 ea.	Spindle Collar
57831			Escutcheon Assembly
	54	1 ea.	Escutcheon Center
	55	2 ea.	Pin
58547			Hardware Kit
	55	6 ea.	Pin

Variation and/or finish/color code may be required when ordering.