

Ordering Information

Applicable product:		
With neck jets**	K-870-N	shown
Without neck jets**	K-870-H1	not shown
With neck jets	K-872-N	not shown
Without neck jets	K-872-H1	not shown
Accessories/hardware:		
Jet trim kit	K-9695	required
Seawall faucet**	varies	required
Drain	K-7166	recommended
Undermount installation kit (K-872 only)	K-580	optional
Vinyl tiling-in bead*	K-1179	optional
*Use K-1179 vinyl bead when wall material contacts any top surface of bath.		
**K-870-H1, K-870-N predrilled for Seawall faucets.		

Required Electrical Service

Dedicated circuit required, protected with Class A Ground-Fault Circuit-Interrupter (GFCI):

Pump/control	120 V., 20 A, 60 Hz
--------------	---------------------

Product Information

Fixture*:	basin area	top area	weight
Bathing well	47" x 24-1/2"	65-1/4" x 35-1/4"	485 lbs.
	water depth	capacity	
To overflow	16-1/2"	110 gals.	

* Approximate measurements for comparison only.

Pump:	HP	V	Hz	A
1-speed	2	120	60	18.5

Installation Notes

Refer to installation instructions included with fixture before beginning installation.

Each pump is supplied with a grounding type plug-in cord. Locate the outlet behind the whirlpool, and within 24" of the pump.

Roughing-In Notes

Fixture dimensions are nominal and conform to tolerances in ANSI Standard A112.19.1.

Deck width must be 2" min. to allow clearance for fittings. See faucet roughing-in requirements.

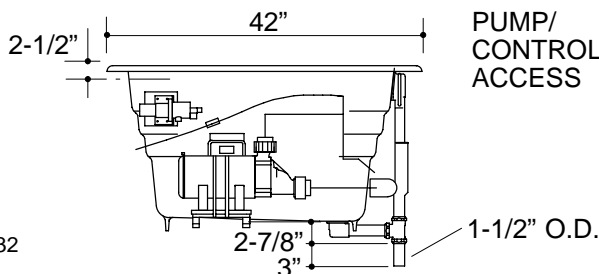
No change in measurements if connected with drain illustrated.

Cut-out for drop-in	70-1/2" x 40-1/2"
---------------------	-------------------

Cut-out for undermount	K-580 template required
------------------------	-------------------------

Minimum access:

Pump/control	40" W x 15" H	required
--------------	---------------	----------



1.25>132

