

Ordering Information

Accessories/hardware:		
Primed steel ventilating grille	K-5430	recommended

Requirements Electrical Service

Service	120 V., 15 A, 60 Hz
---------	---------------------

Plumbing Requirements

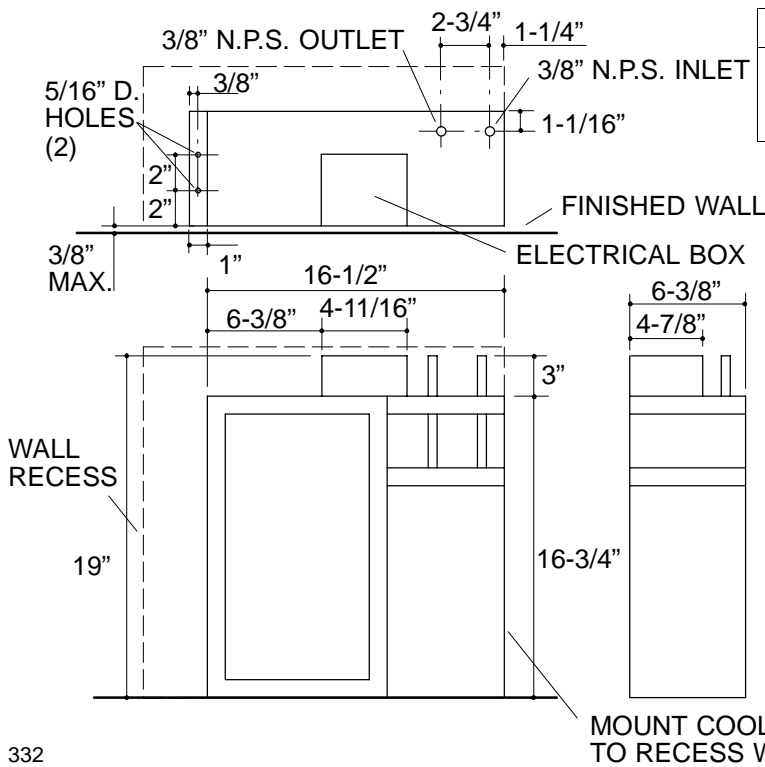
Inlet	3/8" N.P.S.
Outlet	3/8" N.P.S.

Product Information

Unit Size	height	width	depth
	19"	16-1/2"	6-3/8"
Recess Size	19-1/2"	20"	9" min.
Weight	44 lbs.		

Do not connect the water supply to the 3/8" outlet, as the coil will freeze and split.

If water pressure is 75 p.s.i. or greater, a pressure reducer valve must be installed.



Roughing-In Notes

A minimum clearance of 2-1/4" must be maintained at the back of the cabinet and 3-1/2" on the left side to ensure adequate ventilation of the unit.

332