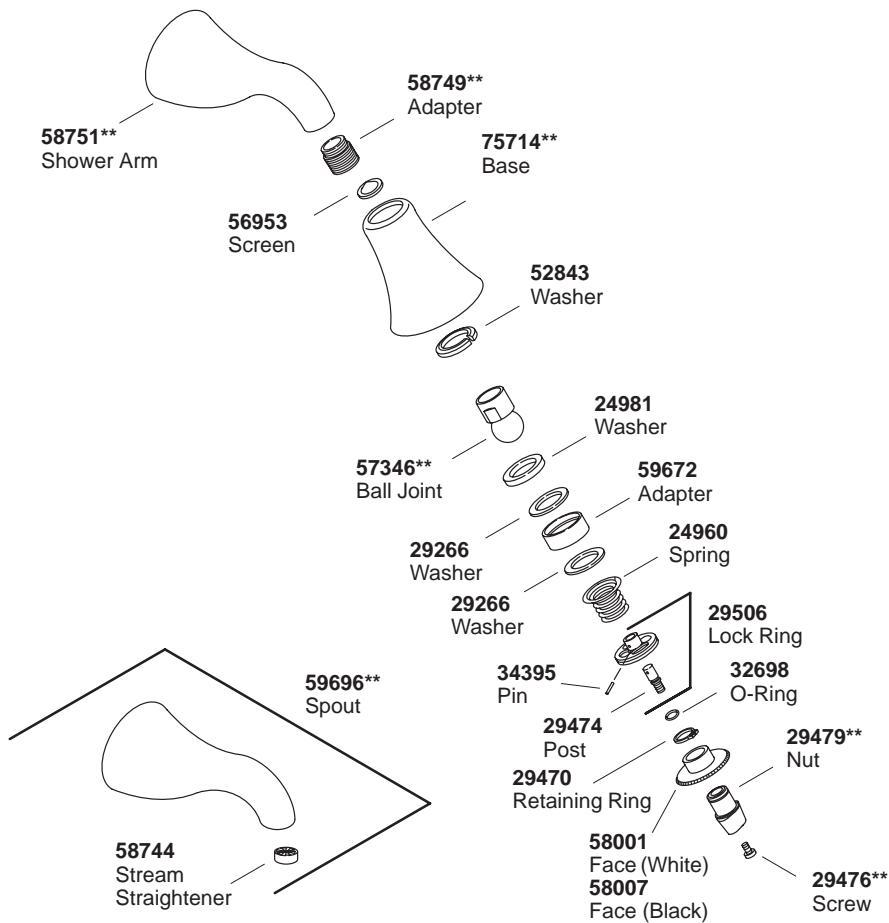


| K#              | Handle |       |     |                   | Bath and Shower | Shower Only | Non-Diverter Valve | Diverter Valve |
|-----------------|--------|-------|-----|-------------------|-----------------|-------------|--------------------|----------------|
|                 | Cross  | Lever | Tee | Traditional Lever |                 |             |                    |                |
| K-312-3-**-AA   | X      |       |     |                   | X               |             |                    | X              |
| K-T312-3-**-AA  | X      |       |     |                   | X               |             |                    |                |
| K-312-4-**-AA   |        | X     |     |                   | X               |             |                    | X              |
| K-T312-4-**-AA  |        | X     |     |                   | X               |             |                    |                |
| K-T312-4F-**-AA |        |       |     | X                 | X               |             |                    |                |
| K-T312-4M-**-AA |        |       |     | X                 | X               |             |                    |                |
| K-T312-4P-**-AA |        |       |     | X                 | X               |             |                    |                |
| K-312-6-**-AA   |        |       | X   |                   | X               |             |                    | X              |
| K-T312-6-**-AA  |        |       | X   |                   | X               |             |                    |                |
| K-313-3-**-AA   | X      |       |     |                   |                 | X           | X                  |                |
| K-T313-3-**-AA  | X      |       |     |                   |                 | X           |                    |                |
| K-313-4-**-AA   |        | X     |     |                   |                 | X           | X                  |                |
| K-T313-4-**-AA  |        | X     |     |                   |                 | X           |                    |                |
| K-T313-4F-**-AA |        |       |     | X                 |                 | X           |                    |                |
| K-T313-4M-**-AA |        |       |     | X                 |                 | X           |                    |                |
| K-T313-4P-**-AA |        |       |     | X                 |                 | X           |                    |                |
| K-313-6-**-AA   |        |       | X   |                   |                 | X           | X                  |                |
| K-T313-6-**-AA  |        |       | X   |                   |                 | X           |                    |                |
| K-304-K-NA-AA   |        |       |     |                   |                 |             | X                  |                |
| K-305-K-NA-AA   |        |       |     |                   |                 |             |                    | X              |

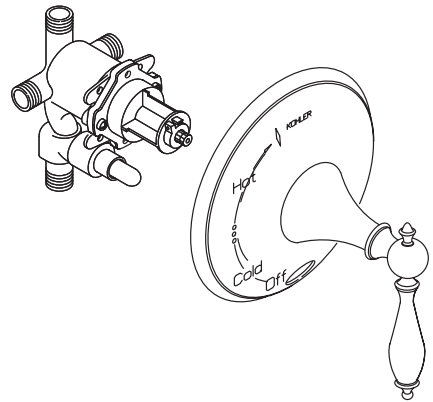
\*\*Finish/color code must be specified when ordering.

Order the following parts based on the finish/color code of your faucet.  
Ex: Order 29476-CP for K-312-3-SC

| Part # | K# Finish |    |    |    |    |    |    |
|--------|-----------|----|----|----|----|----|----|
|        | SC        | CB | PW | CP | T1 | CW | PB |
| 29476  | CP        | CP | 0  | CP | TB | 0  | PB |
| 29479  | SC        | CP | 0  | CP | TB | 0  | PB |
| 57346  | CP        | CP | 0  | CP | TB | 0  | PB |
| 58749  | BC        | BC | BC | BC | TB | BC | TG |
| 58751  | SC        | CP | 0  | CP | TB | 0  | PB |
| 59696  | SC        | CP | 0  | CP | TB | 0  | PB |
| 75714  | SC        | CP | 0  | CP | TB | 0  | PB |



Shown on next page



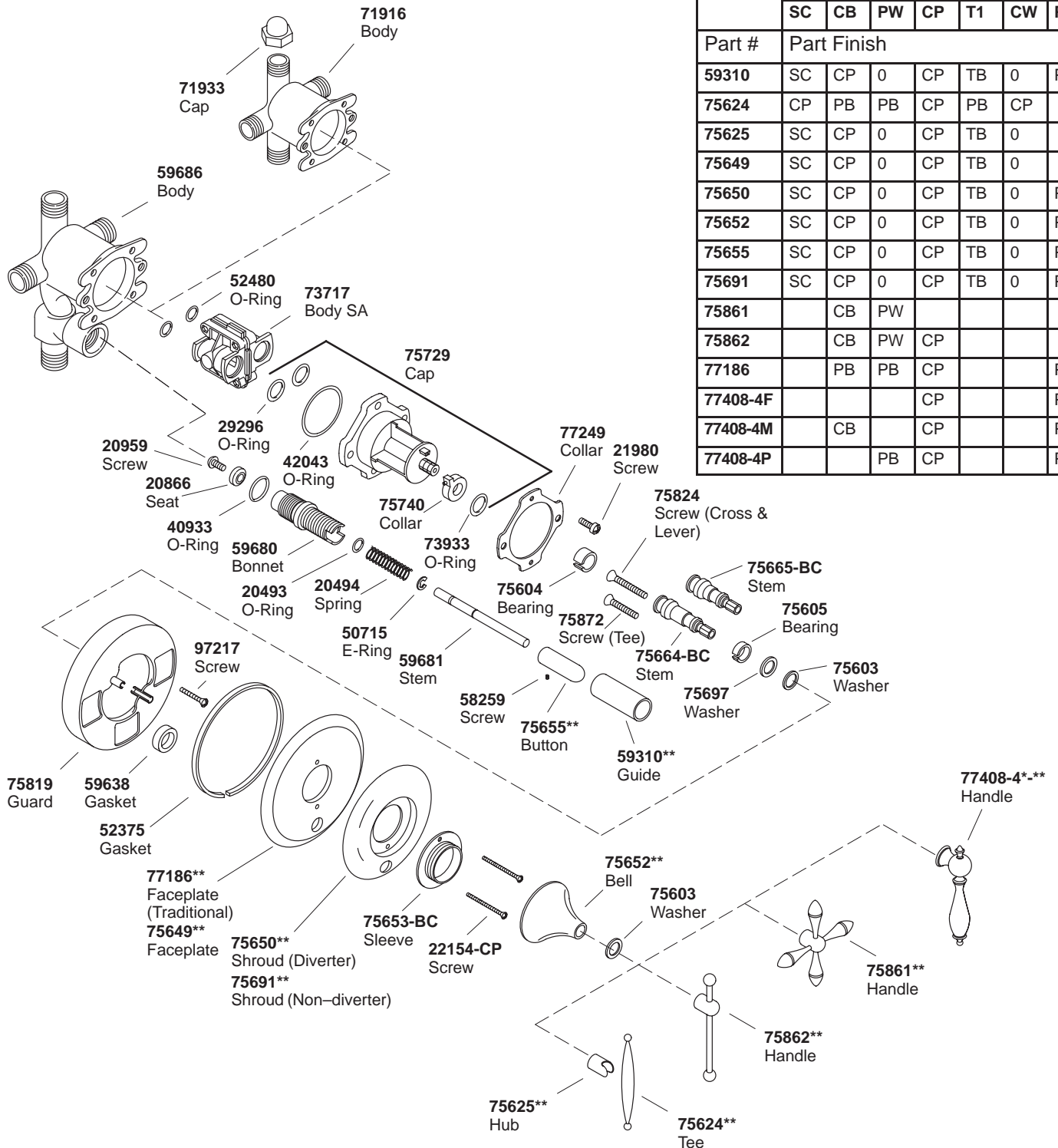
\*\*Finish/color code must be specified when ordering.

# KOHLER® SERVICE PARTS

## FINIAL FUNDAMENTALS & FINIAL TRADITIONAL RITE-TEMP BATH AND SHOWER FAUCET

Order the following parts based on the finish/color code of your faucet.  
Ex: Order 59310-SC for K-312-3-SC

| Part #   | K# Finish |    |    |    |    |    |    |
|----------|-----------|----|----|----|----|----|----|
|          | SC        | CB | PW | CP | T1 | CW | PB |
| 59310    | SC        | CP | 0  | CP | TB | 0  | PB |
| 75624    | CP        | PB | PB | CP | PB | CP |    |
| 75625    | SC        | CP | 0  | CP | TB | 0  |    |
| 75649    | SC        | CP | 0  | CP | TB | 0  |    |
| 75650    | SC        | CP | 0  | CP | TB | 0  | PB |
| 75652    | SC        | CP | 0  | CP | TB | 0  | PB |
| 75655    | SC        | CP | 0  | CP | TB | 0  | PB |
| 75691    | SC        | CP | 0  | CP | TB | 0  | PB |
| 75861    |           | CB | PW |    |    |    |    |
| 75862    |           | CB | PW | CP |    |    |    |
| 77186    |           | PB | PB | CP |    |    | PB |
| 77408-4F |           |    |    | CP |    |    | PB |
| 77408-4M |           | CB |    | CP |    |    | PB |
| 77408-4P |           |    | PB | CP |    |    | PB |



\*\*Finish/color code must be specified when ordering.

**\*\*Finish/color code must be specified when ordering.**