

**NON-PRESSURE BALANCING VALVE  
K-P15700-K  
PROJECT PACK**

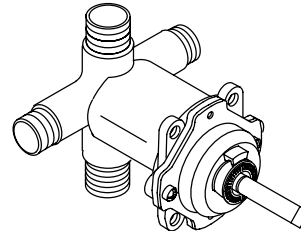
**FEATURES**

- Brass valve body
- Mixing valve cycles from “cold” to “hot”
- High-temperature limit stop
- Available with or without screwdriver stops
- Packaged 12 per case

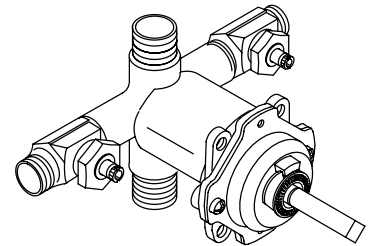
**CODES/STANDARDS APPLICABLE**

Specified model meets or exceeds the following:

- ASME/ANSI A112.18.1M
- CSA B125



K-P15700-K



K-P15700-KS

**COLORS/FINISHES**

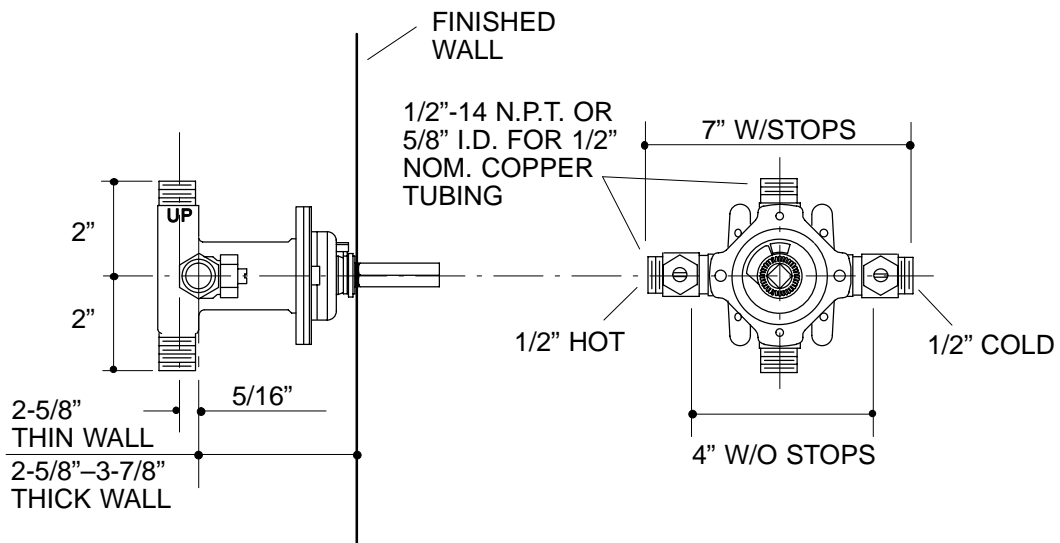
- NA Not applicable

**SPECIFIED MODEL:**

Model	Description	
K-P15700-K	Less Screwdriver Stops	<input type="checkbox"/> NA
K-P15700-KS	With Screwdriver Stops	<input type="checkbox"/> NA

**PRODUCT SPECIFICATION:**

Non-pressure balancing single-control valve shall feature a brass valve body. The valve shall mix the water from the “off” position, through the “cold” to the “hot”, and includes a high-temperature limit stop. The mixing valve cap assembly shall be of one-piece design for ease of maintenance. Optional feature shall be with or without screwdriver stops. Valve shall be Kohler Model K-P15700-\_\_\_\_\_-NA. Project pack valves are packaged 12 per case.



## PRODUCT DIAGRAM