

BATH AND SHOWER FAUCET TRIM
K-T15101
ALSO K-15701

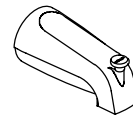
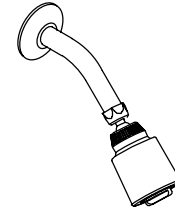
FEATURES

- Metal construction
- Available with 4-7/8" diverter bath spout with N.P.T. or slip-fit connection
- Available with lever or sculptured acrylic handle

CODES/STANDARDS APPLICABLE

Specified model meets or exceeds the following:



- ASME/ANSI A112.18.1M
- ASSE/ANSI 1016
- CSA B125
- IAPMO/UPC



COLORS/FINISHES

- CP Polished Chrome
- PB Polished Brass
- Other Refer to Faucets Price Book for additional finishes

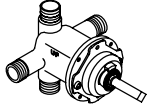
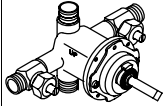
SPECIFIED MODEL: For complete faucet, both faucet trim and Rite-Temp valve must be specified.

Model	Description	ADA		
				
K-T15101-4	With Lever Handle and N.P.T. Spout	<input type="checkbox"/> CP	<input type="checkbox"/> PB	<input type="checkbox"/> Other_____
K-T15101-4S	With Lever Handle and Slip-Fit Spout	<input type="checkbox"/> CP	<input type="checkbox"/> PB	<input type="checkbox"/> Other_____
K-T15101-7	With Sculptured Acrylic Handle and N.P.T. Spout		<input type="checkbox"/> CP	<input type="checkbox"/> PB <input type="checkbox"/> Other_____
K-T15101-7S	With Sculptured Acrylic Handle and Slip-Fit Spout		<input type="checkbox"/> CP	<input type="checkbox"/> PB <input type="checkbox"/> Other_____

Required and Optional Accessories on Page 2.

PRODUCT SPECIFICATION:

Rite-Temp pressure-balancing single-control bath and shower faucet trim shall be of metal construction. Product shall include showerhead with arm and flange, faceplate with lever or sculptured acrylic handle, and 4-7/8" diverter bath spout with N.P.T. or slip-fit connection. Faucet trim shall be Kohler Model K-T15101-_____-_____- and Rite-Temp valve shall be Kohler Model K-15701-_____-NA.

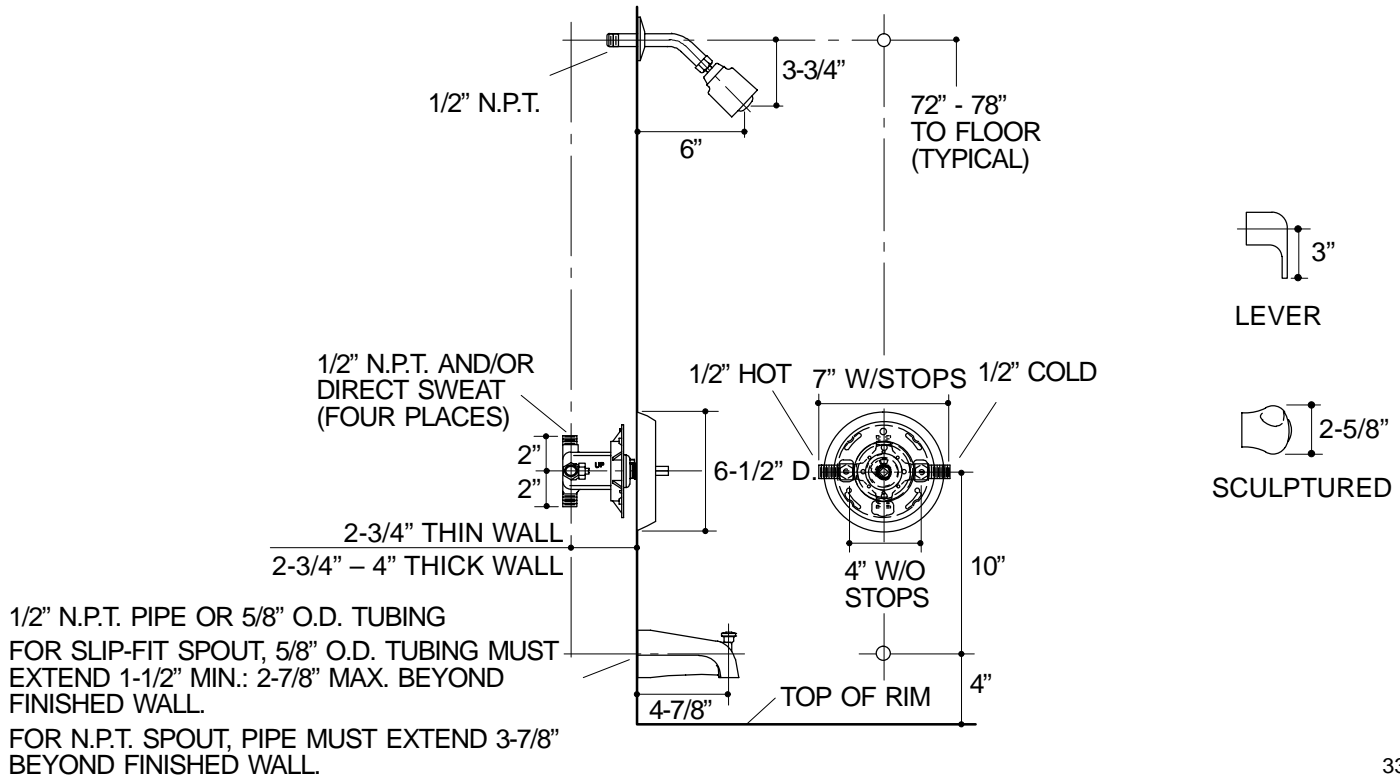
Required Accessory			
K-15701-K	Coralais Rite-Temp Pressure-Balancing Valve, Less Stops	<input type="checkbox"/> NA	
K-15701-KS	Coralais Rite-Temp Pressure-Balancing Valve, With Stops		<input type="checkbox"/> NA

INSTALLATION NOTES

Avoid cross-flow conditions. Do not install shut-off device on either valve outlet.

Cap shower outlet if deck-mount spout, diverter, or handshower is connected to spout outlet.

Install straight pipe or tube drop of 7 to 18" with single elbow between valve and wall-mount spout.



PRODUCT DIAGRAM